


Anti-Phospholipase C gamma 1/PLC-gamma-1 antibody [M156] ab41433

敲除验证

★★★★★ [3 Abreviews](#) [4 References](#) [3 图像](#)

概述

产品名称	Anti-Phospholipase C gamma 1/PLC-gamma-1抗体[M156]
描述	小鼠单克隆抗体[M156] to Phospholipase C gamma 1/PLC-gamma-1
宿主	Mouse
经测试应用	适用于: WB, Flow Cyt (Intra)
种属反应性	与反应: Mouse, Human 预测可用于: Rat 
免疫原	Synthetic peptide corresponding to Human Phospholipase C gamma 1/PLC-gamma-1 (N terminal).
阳性对照	WB: Human A431, Hct116, and Jurkat cells; mouse brain. Flow Cyt (intra): Jurkat cells
常规说明	<p>The Life Science industry has been in the grips of a reproducibility crisis for a number of years. Abcam is leading the way in addressing this with our range of recombinant monoclonal antibodies and knockout edited cell lines for gold-standard validation. Please check that this product meets your needs before purchasing.</p> <p>If you have any questions, special requirements or concerns, please send us an inquiry and/or contact our Support team ahead of purchase. Recommended alternatives for this product can be found below, along with publications, customer reviews and Q&As</p>

性能

形式	Liquid
存放说明	Shipped at 4°C. Store at -20°C. Stable for 12 months at -20°C.
存储溶液	Preservative: 0.05% Sodium azide Constituents: PBS, 50% Glycerol, 0.1% BSA
纯度	Protein A purified
克隆	单克隆
克隆编号	M156
同种型	IgG1

应用

The Abpromise guarantee **Abpromise™**承诺保证使用ab41433于以下的经测试应用

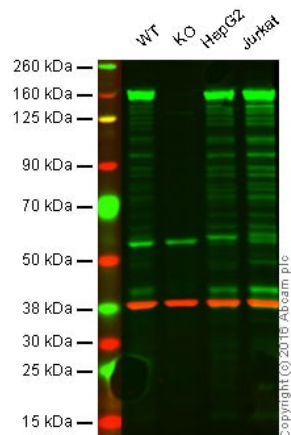
“应用说明”部分 下显示的仅为推荐的起始稀释度;实际最佳的稀释度/浓度应由使用者检定。

应用	Ab评论	说明
WB	★★★★★ (2)	1/1000. Detects a band of approximately 150 kDa (predicted molecular weight: 150 kDa).
Flow Cyt (Intra)		1/100. ab170190 - Mouse monoclonal IgG1, is suitable for use as an isotype control with this antibody.

靶标

功能	Plays a role in actin reorganization and cell migration. The production of the second messenger molecules diacylglycerol (DAG) and inositol 1,4,5-trisphosphate (IP3) is mediated by activated phosphatidylinositol-specific phospholipase C enzymes. Major substrate for heparin-binding growth factor 1 (acidic fibroblast growth factor)-activated tyrosine kinase.
序列相似性	Contains 1 C2 domain. Contains 1 EF-hand domain. Contains 2 PH domains. Contains 1 PI-PLC X-box domain. Contains 1 PI-PLC Y-box domain. Contains 2 SH2 domains. Contains 1 SH3 domain.
结构域	The SH3 domain mediates interaction with CLNK (By similarity). The SH3 domain also mediates interaction with RALGPS1.
翻译后修饰	The receptor-mediated activation of PLC-gamma-1 and PLC-gamma-2 involves their phosphorylation by tyrosine kinases in response to ligation of a variety of growth factor receptors and immune system receptors. May be dephosphorylated by PTPRJ. Ubiquitinated by CBLB in activated T-cells.
细胞定位	Cell projection > lamellipodium. Cell projection > ruffle. Rapidly redistributed to ruffles and lamellipodia structures in response to epidermal growth factor (EGF) treatment.

图片



Western blot - Anti-Phospholipase C gamma 1/PLC-gamma-1 antibody [M156] (ab41433)

Lane 1: Wild-type HAP1 cell lysate (20 µg)

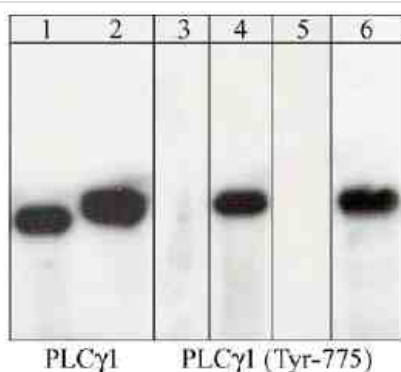
Lane 2: Phospholipase C gamma 1/PLC-gamma-1 knockout HAP1 cell lysate (20 µg)

Lane 3: HepG2 cell lysate (20 µg)

Lane 4: Mouse brain tissue lysate (20 µg)

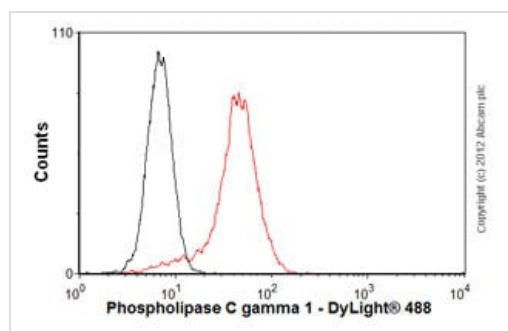
Lanes 1 - 4: Merged signal (red and green). Green - ab41433 observed at 160 kDa. Red - loading control, **ab181602**, observed at 37 kDa.

ab41433 was shown to recognize Phospholipase C gamma 1/PLC-gamma-1 when Phospholipase C gamma 1/PLC-gamma-1 knockout samples were used, along with additional cross-reactive bands. Wild-type and Phospholipase C gamma 1/PLC-gamma-1 knockout samples were subjected to SDS-PAGE. ab41433 diluted to 1/1000 and **ab181602** (loading control to GAPDH) diluted to 1/10,000 and incubated overnight at 4°C. Blots were developed with Goat anti-Mouse IgG H&L (IRDye® 800CW) preadsorbed (**ab216772**) and Goat Anti-Rabbit IgG H&L (IRDye® 680RD) preadsorbed (**ab216777**) secondary antibodies at 1/10,000 dilution for 1 hour at room temperature before imaging.



Western blot - Anti-Phospholipase C gamma 1/PLC-gamma-1 antibody [M156] (ab41433)

Western blot analysis of Phospholipase C gamma 1/PLC-gamma-1 immunoprecipitates from human jurkat cells untreated (lanes 1 & 3) or treated with pervanadate (1 mM) for 30 min (lanes 2, 4, 5 & 6). Immunoprecipitation was performed with monoclonal anti-Phospholipase C gamma 1/PLC-gamma-1 (ab41433). The blots were probed with anti- Phospholipase C gamma 1/PLC-gamma-1 (lanes 1 & 2) and anti-Phospholipase C gamma 1/PLC-gamma-1 (Tyr-775) (lanes 3-6). The latter antibody was used in the presence of phospho- Phospholipase C gamma 1/PLC-gamma-1 (Tyr-775) peptide (lane 5), or a non-specific phosphotyrosine peptide (lane 6).



Flow Cytometry (Intracellular) - Anti-Phospholipase C gamma 1/PLC-gamma-1 antibody [M156] (ab41433)

Overlay histogram showing Jurkat cells stained with ab41433 (red line). The cells were fixed with 4% paraformaldehyde (10 min) and then permeabilized with 0.1% PBS-Tween for 20 min. The cells were then incubated in 1x PBS / 10% normal goat serum / 0.3M glycine to block non-specific protein-protein interactions followed by the antibody (ab41433, 1/100 dilution) for 30 min at 22°C. The secondary antibody used was DyLight® 488 goat anti-mouse IgG (H+L) ([ab96879](#)) at 1/500 dilution for 30 min at 22°C. Isotype control antibody (black line) was mouse IgG1 [ICIGG1] ([ab91353](#), 2µg/1x10⁶ cells) used under the same conditions. Acquisition of >5,000 events was performed. This antibody gave a positive signal in Jurkat cells fixed with 80% methanol (5 min)/permeabilized with 0.1% PBS-Tween for 20 min used under the same conditions.

Please note: All products are "FOR RESEARCH USE ONLY. NOT FOR USE IN DIAGNOSTIC PROCEDURES"

Our Abpromise to you: Quality guaranteed and expert technical support

- Replacement or refund for products not performing as stated on the datasheet
- Valid for 12 months from date of delivery
- Response to your inquiry within 24 hours
- We provide support in Chinese, English, French, German, Japanese and Spanish
- Extensive multi-media technical resources to help you
- We investigate all quality concerns to ensure our products perform to the highest standards

If the product does not perform as described on this datasheet, we will offer a refund or replacement. For full details of the Abpromise, please visit <https://www.abcam.cn/abpromise> or contact our technical team.

Terms and conditions

- Guarantee only valid for products bought direct from Abcam or one of our authorized distributors