


# Anti-Phospholipase C gamma 1/PLC-gamma-1 antibody [EP1898-7Y] ab76155

敲除验证
重组
RabMAb

[10 References](#)
[3 图像](#)

## 概述

产品名称	Anti-Phospholipase C gamma 1/PLC-gamma-1 抗体[EP1898-7Y]
描述	兔单克隆抗体[EP1898-7Y] to Phospholipase C gamma 1/PLC-gamma-1
宿主	Rabbit
经测试应用	<b>适用于:</b> WB <b>不适用于:</b> Flow Cyt, ICC/IF or IHC-P
种属反应性	<b>与反应:</b> Mouse, Human <b>预测可用于:</b> Rat 
免疫原	Synthetic peptide within Human Phospholipase C gamma 1/PLC-gamma-1. The exact sequence is proprietary.
阳性对照	Jurkat whole cell lysate ( <a href="#">ab7899</a> ).
常规说明	<p>This product is a recombinant monoclonal antibody, which offers several advantages including:</p> <ul style="list-style-type: none"> <li>- High batch-to-batch consistency and reproducibility</li> <li>- Improved sensitivity and specificity</li> <li>- Long-term security of supply</li> <li>- Animal-free production</li> </ul> <p>For more information <a href="#">see here</a>.</p> <p>Our RabMAb<sup>®</sup> technology is a patented hybridoma-based technology for making rabbit monoclonal antibodies. For details on our patents, please refer to <a href="#">RabMAb<sup>®</sup> patents</a>.</p>

## 性能

形式	Liquid
存放说明	Shipped at 4°C. Upon delivery aliquot and store at -20°C. Avoid freeze / thaw cycles.
存储溶液	pH: 7.20 Preservative: 0.05% Sodium azide Constituents: 0.1% BSA, 40% Glycerol (glycerin, glycerine), 9.85% Tris glycine, 50% Tissue culture supernatant
纯度	Protein A purified

克隆	单克隆
克隆编号	EP1898-7Y
同种型	IgG

## 应用

**The Abpromise guarantee**      **Abpromise™承诺保证使用ab76155于以下的经测试应用**

“应用说明”部分下显示的仅为推荐的起始稀释度;实际最佳的稀释度/浓度应由使用者检定。

应用	Ab评论	说明
WB		1/5000 - 1/10000. Detects a band of approximately 149 kDa (predicted molecular weight: 149 kDa).

**应用说明** Is unsuitable for Flow Cyt, ICC/IF or IHC-P.

## 靶标

功能	Plays a role in actin reorganization and cell migration. The production of the second messenger molecules diacylglycerol (DAG) and inositol 1,4,5-trisphosphate (IP3) is mediated by activated phosphatidylinositol-specific phospholipase C enzymes. Major substrate for heparin-binding growth factor 1 (acidic fibroblast growth factor)-activated tyrosine kinase.
----	--

**序列相似性**

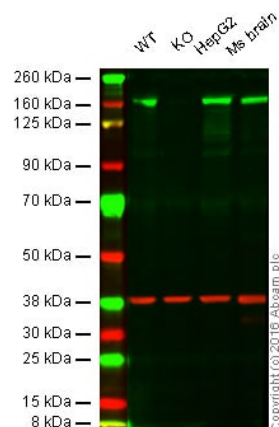
- Contains 1 C2 domain.
- Contains 1 EF-hand domain.
- Contains 2 PH domains.
- Contains 1 PI-PLC X-box domain.
- Contains 1 PI-PLC Y-box domain.
- Contains 2 SH2 domains.
- Contains 1 SH3 domain.

<b>结构域</b>	The SH3 domain mediates interaction with CLNK (By similarity). The SH3 domain also mediates interaction with RALGPS1.
------------	---

翻译后修饰	<p>The receptor-mediated activation of PLC-gamma-1 and PLC-gamma-2 involves their phosphorylation by tyrosine kinases in response to ligation of a variety of growth factor receptors and immune system receptors. May be dephosphorylated by PTPRJ.</p> <p>Ubiquitinated by CBLB in activated T-cells.</p>
-------	---

**细胞定位** Cell projection > lamellipodium. Cell projection > ruffle. Rapidly redistributed to ruffles and lamellipodia structures in response to epidermal growth factor (EGF) treatment.

图片



Western blot - Anti-Phospholipase C gamma 1/PLC-gamma-1 antibody [EP1898-7Y] (ab76155)

**Lane 1:** Wild-type HAP1 cell lysate (20 µg)

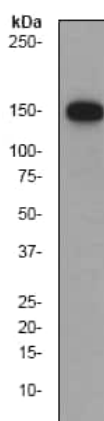
**Lane 2:** Phospholipase C gamma 1/PLC-gamma-1 knockout HAP1 cell lysate (20 µg)

**Lane 3:** HepG2 cell lysate (20 µg)

**Lane 4:** Mouse brain tissue lysate (20 µg)

**Lanes 1 - 4:** Merged signal (red and green). Green - ab76155 observed at 160 kDa. Red - loading control, [ab8245](#), observed at 37 kDa.

ab76155 was shown to specifically react with Phospholipase C gamma 1/PLC-gamma-1 when Phospholipase C gamma 1/PLC-gamma-1 knockout samples were used. Wild-type and Phospholipase C gamma 1/PLC-gamma-1 knockout samples were subjected to SDS-PAGE. ab76155 at a dilution of 1/5000 and [ab8245](#) (loading control to GAPDH) at a dilution of 1/10,000 were incubated overnight at 4°C. Blots were developed with Goat anti-Rabbit IgG H&L (IRDye® 800CW) preadsorbed ([ab216773](#)) and Goat anti-Mouse IgG H&L (IRDye® 680RD) preadsorbed ([ab216776](#)) secondary antibodies at 1/10,000 dilution for 1 hour at room temperature before imaging.



Western blot - Anti-Phospholipase C gamma 1/PLC-gamma-1 antibody [EP1898-7Y] (ab76155)

Anti-Phospholipase C gamma 1/PLC-gamma-1 antibody [EP1898-7Y] (ab76155) at 1/10000 dilution + Jurkat cell lysates at 10 µg

### Secondary

goat anti-rabbit HRP at 1/2000 dilution

**Predicted band size:** 149 kDa

**Observed band size:** 149 kDa

### Why choose a recombinant antibody?



**Research with confidence**  
Consistent and reproducible results



**Long-term and scalable supply**  
Recombinant technology



**Success from the first experiment**  
Confirmed specificity



**Ethical standards compliant**  
Animal-free production

Anti-Phospholipase C gamma 1/PLC-gamma-1  
antibody [EP1898-7Y] (ab76155)

**Please note:** All products are "FOR RESEARCH USE ONLY. NOT FOR USE IN DIAGNOSTIC PROCEDURES"

### Our Abpromise to you: Quality guaranteed and expert technical support

---

- Replacement or refund for products not performing as stated on the datasheet
- Valid for 12 months from date of delivery
- Response to your inquiry within 24 hours
- We provide support in Chinese, English, French, German, Japanese and Spanish
- Extensive multi-media technical resources to help you
- We investigate all quality concerns to ensure our products perform to the highest standards

If the product does not perform as described on this datasheet, we will offer a refund or replacement. For full details of the Abpromise, please visit <https://www.abcam.cn/abpromise> or contact our technical team.

### Terms and conditions

---

- Guarantee only valid for products bought direct from Abcam or one of our authorized distributors