

PerCP/Cy5.5® Anti-CD15 antibody [MEM-158] ab234266

1 图像

概述

产品名称	PerCP荧光/Cy5.5® Anti-CD15抗体[MEM-158]
描述	PerCP荧光/Cy5.5®小鼠单克隆抗体[MEM-158] to CD15
宿主	Mouse
偶联物	PerCP/Cy5.5®. Ex: 482nm, Em: 690nm
经测试应用	适用于: Flow Cyt
种属反应性	与反应: Human
免疫原	Tissue, cells or virus corresponding to Human CD15. Human granulocytes.
阳性对照	Flow cyt: Human peripheral blood cells.
常规说明	<p>This product or portions thereof is manufactured under license from Carnegie Mellon University under U.S. Patent Number 5, 268, 486 and related patents. Cy® and CyDye® are trademarks of Cytiva.</p> <p>The Life Science industry has been in the grips of a reproducibility crisis for a number of years. Abcam is leading the way in addressing this with our range of recombinant monoclonal antibodies and knockout edited cell lines for gold-standard validation. Please check that this product meets your needs before purchasing.</p> <p>If you have any questions, special requirements or concerns, please send us an inquiry and/or contact our Support team ahead of purchase. Recommended alternatives for this product can be found below, along with publications, customer reviews and Q&As</p>

性能

形式	Liquid
存放说明	Shipped at 4°C. Store at +4°C. Do Not Freeze. Store In the Dark.
存储溶液	<p>pH: 7.4</p> <p>Preservative: 0.0975% Sodium azide</p> <p>Constituent: PBS</p>
纯度	Size exclusion
纯化说明	<p>The purified antibody is conjugated with tandem dye PerCP-Cy™5.5 under optimum conditions. The conjugate is purified by size-exclusion chromatography and adjusted for direct use. No reconstitution is necessary.</p>

克隆	单克隆
克隆编号	MEM-158
同种型	IgM

应用

The Abpromise guarantee

Abpromise™承诺保证使用ab234266于以下的经测试应用

“应用说明”部分 下显示的仅为推荐的起始稀释度;实际最佳的稀释度/浓度应由使用者检定。

应用	Ab评论	说明
Flow Cyt		Use 4µl for 10 ⁶ cells. (or 100 µL whole blood)

靶标

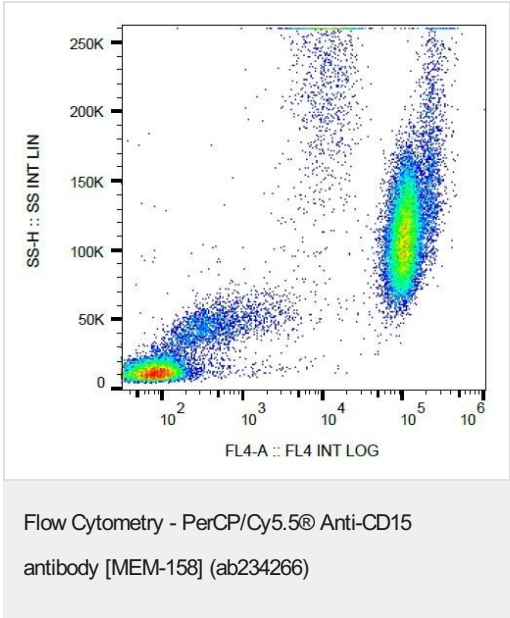
相关性

CD15 is a carbohydrate adhesion molecule (and not a protein) that mediates phagocytosis and chemotaxis. Synthesis is directed by FUT4 in lymphoid cells and mature granulocytes, and by FUT9 in promyelocytes and monocytes.

细胞定位

Golgi Apparatus; Membrane-bound form in trans cisternae of Golgi.

图片



Flow cytometric analysis of surface stained human peripheral blood cells, labeling CD15 with ab234266 at 4 µL per 10⁶ cells. Gated on leukocytes.

Please note: All products are "FOR RESEARCH USE ONLY. NOT FOR USE IN DIAGNOSTIC PROCEDURES"

Our Abpromise to you: Quality guaranteed and expert technical support

- Replacement or refund for products not performing as stated on the datasheet

- Valid for 12 months from date of delivery
- Response to your inquiry within 24 hours
- We provide support in Chinese, English, French, German, Japanese and Spanish
- Extensive multi-media technical resources to help you
- We investigate all quality concerns to ensure our products perform to the highest standards

If the product does not perform as described on this datasheet, we will offer a refund or replacement. For full details of the Abpromise, please visit <https://www.abcam.cn/abpromise> or contact our technical team.

Terms and conditions

- Guarantee only valid for products bought direct from Abcam or one of our authorized distributors