

### Anti-Pellino 1 antibody [EPR19302] ab199336

**重组 RabMAb**

**7 References** [9 图像](#)

#### 概述

产品名称	Anti-Pellino 1 抗体[EPR19302]
描述	兔单克隆抗体[EPR19302] to Pellino 1
宿主	Rabbit
经测试应用	<b>适用于:</b> WB, IP, ICC/IF
种属反应性	<b>与反应:</b> Mouse, Rat, Human, Recombinant fragment
免疫原	Recombinant full length protein. This information is proprietary to Abcam and/or its suppliers.
阳性对照	WB: Human PELI1 full length recombinant protein; Human fetal liver, fetal heart and fetal kidney lysates; PC-12, NIH/3T3, Ramos, HeLa, RAW 264.7 (treated with 1 µg/ml LPS for 6 hours) and PC-12 (treated with 1 µg/ml LPS for 6 hours) whole cell lysates. ICC/IF: HeLa and Ramos cells. IP: Ramos whole cell lysate.
常规说明	<p>This product is a recombinant monoclonal antibody, which offers several advantages including:</p> <ul style="list-style-type: none"><li>- High batch-to-batch consistency and reproducibility</li><li>- Improved sensitivity and specificity</li><li>- Long-term security of supply</li><li>- Animal-free production</li></ul> <p>For more information <a href="#">see here</a>.</p> <p>Our RabMAb<sup>®</sup> technology is a patented hybridoma-based technology for making rabbit monoclonal antibodies. For details on our patents, please refer to <a href="#">RabMAb<sup>®</sup> patents</a>.</p>

#### 性能

存放说明	Shipped at 4°C. Store at +4°C short term (1-2 weeks). Upon delivery aliquot. Store at -20°C long term. Avoid freeze / thaw cycle.
存储溶液	pH: 7.2 Preservative: 0.01% Sodium azide Constituents: 59% PBS, 0.05% BSA, 40% Glycerol
纯度	Protein A purified
克隆	单克隆
克隆编号	EPR19302
同种型	IgG

## 应用

### The Abpromise guarantee

**Abpromise™**承诺保证使用ab199336于以下的经测试应用

“应用说明”部分下显示的仅为推荐的起始稀释度;实际最佳的稀释度/浓度应由使用者检定。

应用	Ab评论	说明
WB		1/1000. Detects a band of approximately 46 kDa (predicted molecular weight: 46 kDa).
IP		1/30.
ICC/IF		1/100.

## 靶标

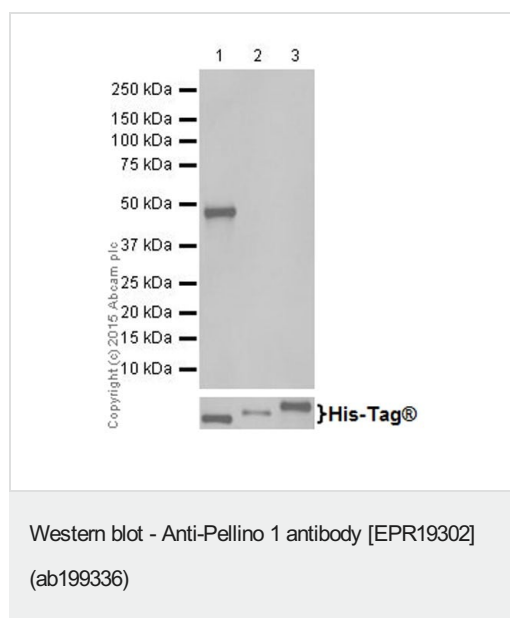
### 功能

Scaffold protein involved in the IL-1 signaling pathway via its interaction with the complex containing IRAK kinases and TRAF6. Required for NF-kappa-B activation and IL-8 gene expression in response to IL-1.

### 序列相似性

Belongs to the pellino family.

## 图片



**All lanes** : Anti-Pellino 1 antibody [EPR19302] (ab199336) at 1/5000 dilution

**Lane 1** : Human PELI1 full length recombinant protein

**Lane 2** : Human PELI2 full length recombinant protein

**Lane 3** : Human PELI3 full length recombinant protein

Lysates/proteins at 0.01 µg per lane.

### Secondary

**All lanes** : Goat Anti-Rabbit IgG H&L (HRP) ([ab97051](#)) at 1/100000 dilution

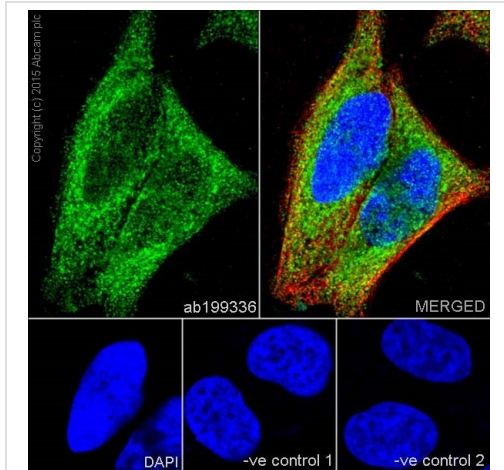
**Predicted band size:** 46 kDa

**Observed band size:** 46 kDa

**Exposure time:** 3 minutes

Blocking/Dilution buffer: 5% NFD/MTBST.

Human PELI 1 full length recombinant protein contain aa1-418 with a His-Tag®. Human PELI 2 full length recombinant protein contain aa1-420 with a His-Tag®. Human PELI3 full length recombinant protein contain aa1-469 with a His-Tag®. All three recombinant human fragment proteins were made in-house.



Immunocytochemistry/ Immunofluorescence - Anti-Pellino 1 antibody [EPR19302] (ab199336)

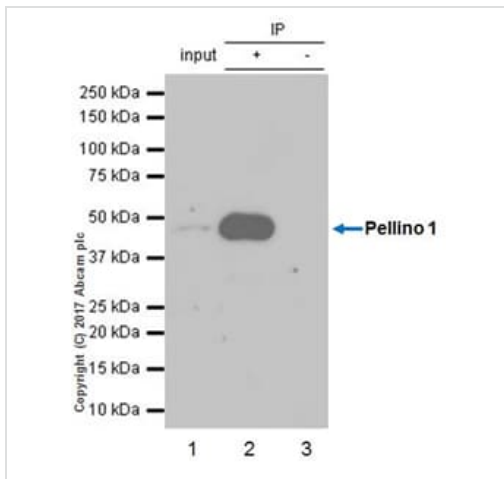
Immunofluorescent analysis of 4% paraformaldehyde-fixed, 0.1% Triton X-100 permeabilized HeLa (Human epithelial cell line from cervix adenocarcinoma) cells labeling Pellino 1 with ab199336 at 1/100 dilution, followed by Goat Anti-Rabbit IgG (Alexa Fluor® 488) (**ab150077**) secondary antibody at 1/1000 dilution (green). Confocal image showing cytoplasmic and nuclear staining on HeLa cell line. The nuclear counter stain is DAPI (blue).

Tubulin is detected with Anti-alpha Tubulin antibody [EPR19302] - Loading Control (**ab7291**) at 1/1000 dilution and Goat Anti-Mouse IgG H&L (Alexa Fluor® 594) preadsorbed (**ab150120**) at 1/1000 dilution (red).

The negative controls are as follows:

-ve control 1: ab199336 at 1/100 dilution followed by **ab150120** at 1/1000 dilution.

-ve control 2: **ab7291** at 1/1000 dilution followed by **ab150077** at 1/1000 dilution.



Immunoprecipitation - Anti-Pellino 1 antibody [EPR19302] (ab199336)

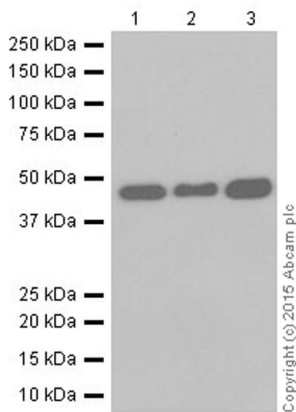
**Lane 1 (input):** Mouse brain lysate, 10µg

**Lane 2 (+):** Mouse brain lysate

**Lane 3 (-):** Rabbit monoclonal IgG (**ab172730**) instead of ab199336 in Mouse brain lysate

Ab199336 immunoprecipitating Pellino in Mouse brain lysate. For western blotting, primary antibody used was ab199336 at 1:500 dilution. VeriBlot for IP Detection Reagent (HRP) (**ab131366**), was used for detection at 1/1000 dilution.

Blocking and diluting buffer: 5% NFD/MTBST



Western blot - Anti-Pellino 1 antibody [EPR19302] (ab199336)

**All lanes** : Anti-Pellino 1 antibody [EPR19302] (ab199336) at 1/1000 dilution

**Lane 1** : Human fetal liver lysate

**Lane 2** : Human fetal heart lysate

**Lane 3** : Human fetal kidney lysate

Lysates/proteins at 10 µg per lane.

### Secondary

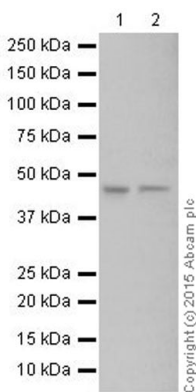
**All lanes** : Goat Anti-Rabbit IgG Peroxidase Conjugate, specific to the non-reduced form of IgG at 1/10000 dilution

**Predicted band size:** 46 kDa

**Observed band size:** 46 kDa

**Exposure time:** 3 minutes

Blocking/Dilution buffer: 5% NFDm/TBST.



Western blot - Anti-Pellino 1 antibody [EPR19302] (ab199336)

**All lanes** : Anti-Pellino 1 antibody [EPR19302] (ab199336) at 1/1000 dilution

**Lane 1** : PC-12 (Rat adrenal gland pheochromocytoma cell line) whole cell lysate

**Lane 2** : NIH/3T3 (Mouse embryonic fibroblast cell line) whole cell lysate

Lysates/proteins at 10 µg per lane.

### Secondary

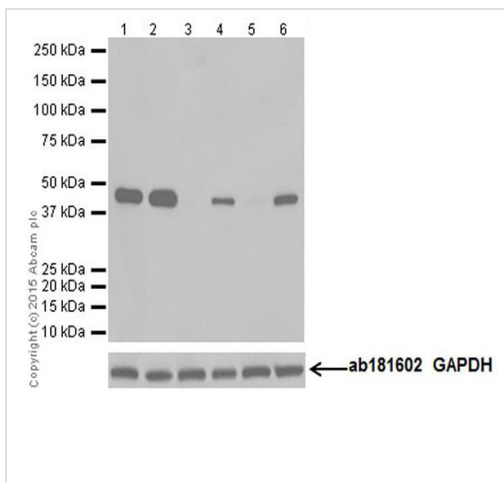
**All lanes** : Goat Anti-Rabbit IgG H&L (HRP) ([ab97051](#)) at 1/10000 dilution

**Predicted band size:** 46 kDa

**Observed band size:** 46 kDa

**Exposure time:** 1 minute

Blocking/Dilution buffer: 5% NFDm/TBST.



Western blot - Anti-Pellino 1 antibody [EPR19302]  
(ab199336)

**All lanes :** Anti-Pellino 1 antibody [EPR19302] (ab199336) at 1/1000 dilution

**Lane 1 :** Ramos (Human Burkitt's lymphoma cell line) whole cell lysate

**Lane 2 :** HeLa (Human epithelial cell line from cervix adenocarcinoma) whole cell lysate

**Lane 3 :** Untreated RAW 264.7 (Mouse macrophage cell line transformed with Abelson murine leukemia virus) whole cell lysate

**Lane 4 :** RAW 264.7 (Mouse macrophage cell line transformed with Abelson murine leukemia virus) treated with 1 µg/ml LPS for 6 hours whole cell lysate

**Lane 5 :** Untreated PC-12 (Rat adrenal gland pheochromocytoma cell line) whole cell lysate

**Lane 6 :** PC-12 (Rat adrenal gland pheochromocytoma cell line) treated with 1 µg/ml LPS for 6 hours whole cell lysate

Lysates/proteins at 20 µg per lane.

### Secondary

**All lanes :** Goat Anti-Rabbit IgG H&L (HRP) ([ab97051](#)) at 1/100000 dilution

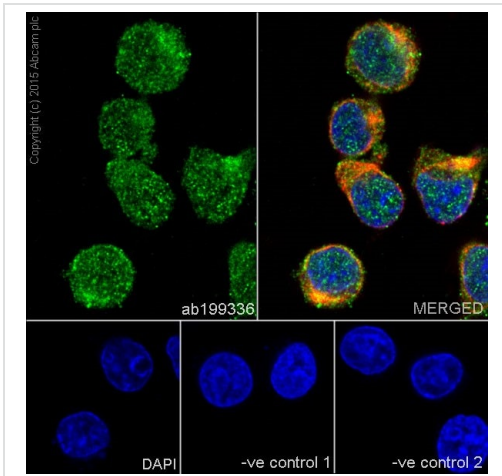
**Predicted band size:** 46 kDa

**Observed band size:** 46 kDa

**Exposure time:** 3 minutes

Blocking/Dilution buffer: 5% NFDm/TBST.

The expression of Pellino 1 can be induced by LPS. (PMID: 21204785).



Immunocytochemistry/ Immunofluorescence - Anti-Pellino 1 antibody [EPR19302] (ab199336)

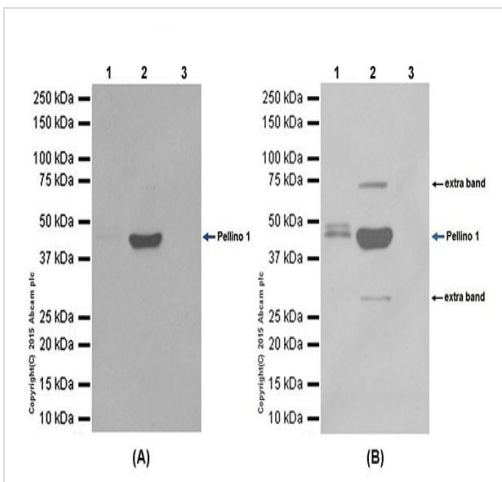
Immunofluorescent analysis of 4% paraformaldehyde-fixed, 0.1% Triton X-100 permeabilized Ramos (Human Burkitt's lymphoma cell line) cells labeling Pellino 1 with ab199336 at 1/100 dilution, followed by Goat Anti-Rabbit IgG (Alexa Fluor® 488) (**ab150077**) secondary antibody at 1/1000 dilution (green). Confocal image showing cytoplasmic and nuclear staining on Ramos cell line. The nuclear counter stain is DAPI (blue).

Tubulin is detected with Anti-alpha Tubulin antibody [EPR19302] - Loading Control (**ab7291**) at 1/1000 dilution and Goat Anti-Mouse IgG H&L (Alexa Fluor® 594) preadsorbed (**ab150120**) at 1/1000 dilution (red).

The negative controls are as follows:

-ve control 1: ab199336 at 1/100 dilution followed by **ab150120** at 1/1000 dilution.

-ve control 2: **ab7291** at 1/1000 dilution followed by **ab150077** at 1/1000 dilution.



Immunoprecipitation - Anti-Pellino 1 antibody [EPR19302] (ab199336)

Pellino 1 was immunoprecipitated from 1mg of Ramos (Human Burkitt's lymphoma cell line) whole cell lysate with ab199336 at 1/30 dilution. Western blot was performed from the immunoprecipitate using ab199336 at 1/1000 dilution. VeriBlot for IP Detection Reagent (HRP) (**ab131366**), was used for detection at 1/10000 dilution.

Lane 1: Ramos whole cell lysate 10µg (Input).


Lane 2: ab199336 IP in Ramos whole cell lysate.

Lane 3: Rabbit IgG, monoclonal [EPR19302] - Isotype Control (**ab172730**) instead of ab199336 in Ramos whole cell lysate.

Blocking and dilution buffer and concentration: 5% NFDN/TBST.

Exposure time: (A): 30 seconds; (B): 3 minutes.

Why choose a recombinant antibody?



**Research with confidence**  
Consistent and reproducible results

**Long-term and scalable supply**  
Recombinant technology

**Success from the first experiment**  
Confirmed specificity

**Ethical standards compliant**  
Animal-free production

Anti-Pellino 1 antibody [EPR19302] (ab199336)

**Please note:** All products are "FOR RESEARCH USE ONLY. NOT FOR USE IN DIAGNOSTIC PROCEDURES"

### Our Abpromise to you: Quality guaranteed and expert technical support

---

- Replacement or refund for products not performing as stated on the datasheet
- Valid for 12 months from date of delivery
- Response to your inquiry within 24 hours
- We provide support in Chinese, English, French, German, Japanese and Spanish
- Extensive multi-media technical resources to help you
- We investigate all quality concerns to ensure our products perform to the highest standards

If the product does not perform as described on this datasheet, we will offer a refund or replacement. For full details of the Abpromise, please visit <https://www.abcam.cn/abpromise> or contact our technical team.

### Terms and conditions

---

- Guarantee only valid for products bought direct from Abcam or one of our authorized distributors