

# Anti-PEF1 antibody ab96132

## 2 图像

### 概述

|              |   |
|--------------|---|
| <b>产品名称</b>  | Anti-PEF1抗体   |
| <b>描述</b>    | 兔多克隆抗体to PEF1   |
| <b>宿主</b>    | Rabbit  |
| <b>经测试应用</b> | <b>适用于:</b> WB, ICC/IF  |
| <b>种属反应性</b> | <b>与反应:</b> Human<br><b>预测可用于:</b> Mouse, Rat, Cow, Monkey   |
| <b>免疫原</b>   | Recombinant protein fragment with a sequence corresponding to a region within amino acids 77 and 265 of Human PEF1 (NP_036524).   |
| <b>阳性对照</b>  | 293T, A431, H1299, HeLaS3, HepG2, Molt-4 and Raji cell lines. HeLa cells for IF.  |
| <b>常规说明</b>  | <p>The Life Science industry has been in the grips of a reproducibility crisis for a number of years. Abcam is leading the way in addressing this with our range of recombinant monoclonal antibodies and knockout edited cell lines for gold-standard validation. Please check that this product meets your needs before purchasing.</p> <p>If you have any questions, special requirements or concerns, please send us an inquiry and/or contact our Support team ahead of purchase. Recommended alternatives for this product can be found below, along with publications, customer reviews and Q&amp;As</p> |

### 性能

|             |   |
|-------------|---|
| <b>形式</b>   | Liquid  |
| <b>存放说明</b> | Shipped at 4°C. Upon delivery aliquot and store at -20°C or -80°C. Avoid repeated freeze / thaw cycles.                                 |
| <b>存储溶液</b> | pH: 7.00<br>Preservative: 0.01% Thimerosal (merthiolate)<br>Constituents: 1.21% Tris, 0.75% Glycine, 10% Glycerol (glycerin, glycerine) |
| <b>纯度</b>   | Immunogen affinity purified   |
| <b>克隆</b>   | 多克隆   |
| <b>同种型</b>  | IgG   |

### 应用

## The Abpromise guarantee

**Abpromise™** 承诺保证使用 ab96132 于以下的经测试应用

“应用说明”部分 下显示的仅为推荐的起始稀释度;实际最佳的稀释度/浓度应由使用者检定。

| 应用     | Ab评论 | 说明  |
|--------|------|---|
| WB     |      | 1/500 - 1/3000. Predicted molecular weight: 30 kDa. |
| ICC/IF |      | 1/100 - 1/200.                                      |

## 靶标

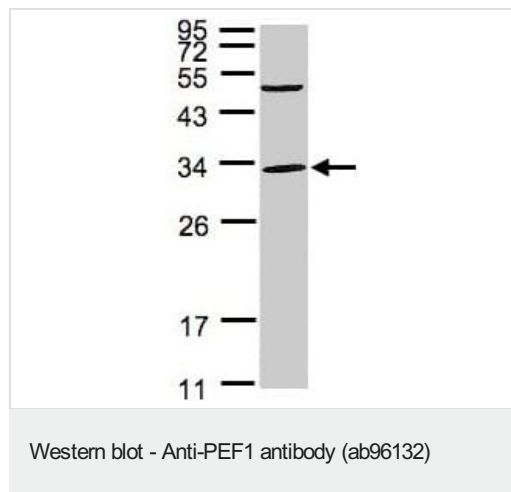
### 序列相似性

Contains 5 EF-hand domains.

### 细胞定位

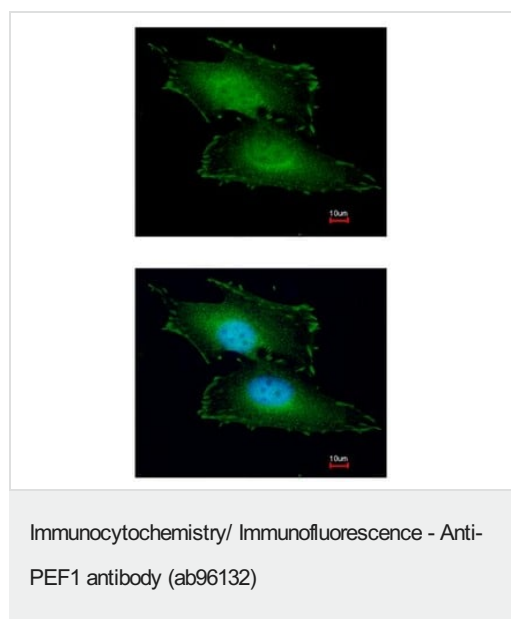
Cytoplasm. Membrane. Membrane-associated in the presence of C.

## 图片



Anti-PEF1 antibody (ab96132) at 1/1000 dilution + 293T whole cell lysate at 30  $\mu$ g

**Predicted band size:** 30 kDa



ab96132, at 1/200 staining HeLa cells by Immunofluorescence.  
Lower image merged with DNA probe.

**Please note:** All products are "FOR RESEARCH USE ONLY. NOT FOR USE IN DIAGNOSTIC PROCEDURES"

### **Our Abpromise to you: Quality guaranteed and expert technical support**

---

- Replacement or refund for products not performing as stated on the datasheet
- Valid for 12 months from date of delivery
- Response to your inquiry within 24 hours
  
- We provide support in Chinese, English, French, German, Japanese and Spanish
- Extensive multi-media technical resources to help you
- We investigate all quality concerns to ensure our products perform to the highest standards

If the product does not perform as described on this datasheet, we will offer a refund or replacement. For full details of the Abpromise, please visit <https://www.abcam.cn/abpromise> or contact our technical team.

### **Terms and conditions**

---

- Guarantee only valid for products bought direct from Abcam or one of our authorized distributors