

### PE/DyLight™ 594 Anti-CD13 antibody [WM15] ab239330

#### 1 图像

#### 概述

<b>产品名称</b>	PE/DyLight™ 594 Anti-CD13抗体[WM15]
<b>描述</b>	PE/DyLight™ 594小鼠单克隆抗体[WM15] to CD13
<b>宿主</b>	Mouse
<b>偶联物</b>	PE/DyLight™ 594
<b>经测试应用</b>	<b>适用于:</b> Flow Cyt
<b>种属反应性</b>	<b>与反应:</b> Human
<b>免疫原</b>	Tissue, cells or virus corresponding to Human CD13. (Human AML cells).
<b>阳性对照</b>	Flow Cyt: Human peripheral blood leukocytes.
<b>常规说明</b>	<p>The Life Science industry has been in the grips of a reproducibility crisis for a number of years. Abcam is leading the way in addressing this with our range of recombinant monoclonal antibodies and knockout edited cell lines for gold-standard validation. Please check that this product meets your needs before purchasing.</p> <p>If you have any questions, special requirements or concerns, please send us an inquiry and/or contact our Support team ahead of purchase. Recommended alternatives for this product can be found below, along with publications, customer reviews and Q&amp;As</p>

#### 性能

<b>形式</b>	Liquid
<b>存放说明</b>	Shipped at 4°C. Store at +4°C. Store In the Dark.
<b>存储溶液</b>	pH: 7.4 Preservative: 0.0975% Sodium azide Constituent: PBS
<b>纯度</b>	Size exclusion
<b>纯化说明</b>	Purified antibody is conjugated with tandem dye PE-DyLight™ 594 under optimum conditions. The conjugate is purified by size-exclusion chromatography and adjusted for direct use. No reconstitution is necessary.
<b>克隆</b>	单克隆
<b>克隆编号</b>	WM15
<b>同种型</b>	IgG1

## 应用

**The Abpromise guarantee**      **Abpromise™**承诺保证使用ab239330于以下的经测试应用

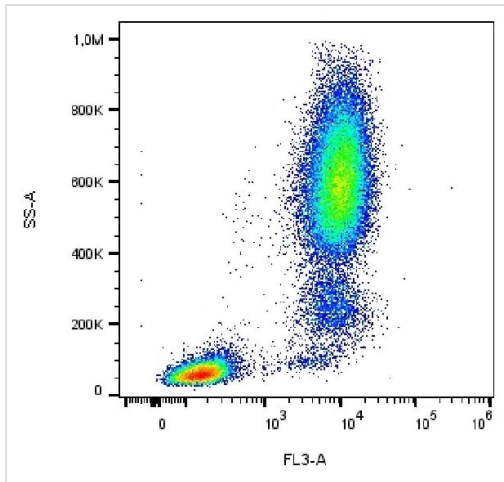
“应用说明”部分 下显示的仅为推荐的起始稀释度;实际最佳的稀释度/浓度应由使用者检定。

应用	Ab评论	说明
Flow Cyt		Use 4µl for 10 <sup>6</sup> cells. (or 100 µl of whole blood).

## 靶标

<b>功能</b>	Broad specificity aminopeptidase. Plays a role in the final digestion of peptides generated from hydrolysis of proteins by gastric and pancreatic proteases. May play a critical role in the pathogenesis of cholesterol gallstone disease. May be involved in the metabolism of regulatory peptides of diverse cell types including small intestinal and tubular epithelial cells, macrophages, granulocytes and synaptic membranes from the CNS. Found to cleave antigen peptides bound to major histocompatibility complex class II molecules of presenting cells and to degrade neurotransmitters at synaptic junctions. Is also implicated as a regulator of IL-8 bioavailability in the endometrium, and therefore may contribute to the regulation of angiogenesis. Is used as a marker for acute myeloid leukemia and plays a role in tumor invasion. In case of human coronavirus 229E (HCoV-229E) infection, serves as receptor for HCoV-229E spike glycoprotein. Mediates as well human cytomegalovirus (HCMV) infection.
<b>组织特异性</b>	Expressed in epithelial cells of the kidney, intestine, and respiratory tract; granulocytes, monocytes, fibroblasts, endothelial cells, cerebral pericytes at the blood-brain barrier, synaptic membranes of cells in the CNS. Also expressed in endometrial stromal cells, but not in the endometrial glandular cells. Found in the vasculature of tissues that undergo angiogenesis and in malignant gliomas and lymph node metastases from multiple tumor types but not in blood vessels of normal tissues. A soluble form has been found in plasma. It is found to be elevated in plasma and effusions of cancer patients.
<b>序列相似性</b>	Belongs to the peptidase M1 family.
<b>结构域</b>	Amino acids 260-353 are essential to mediate susceptibility to infection with HCoV-229E (in porcine/human chimeric studies) and more specifically amino acids 288-295 (mutagenesis studies).
<b>翻译后修饰</b>	Sulfated. N- and O-glycosylated. May undergo proteolysis and give rise to a soluble form.
<b>细胞定位</b>	Cell membrane. Cytoplasm > cytosol. A soluble form has also been detected.

## 图片



Flow cytometric analysis of human peripheral blood leukocytes labeling CD13 with ab239330. Surface staining. Gated on leukocytes.

Flow Cytometry - PE/DyLight™ 594 Anti-CD13 antibody [WM15] (ab239330)

**Please note:** All products are "FOR RESEARCH USE ONLY. NOT FOR USE IN DIAGNOSTIC PROCEDURES"

### Our Abpromise to you: Quality guaranteed and expert technical support

- Replacement or refund for products not performing as stated on the datasheet
- Valid for 12 months from date of delivery
- Response to your inquiry within 24 hours
- We provide support in Chinese, English, French, German, Japanese and Spanish
- Extensive multi-media technical resources to help you
- We investigate all quality concerns to ensure our products perform to the highest standards

If the product does not perform as described on this datasheet, we will offer a refund or replacement. For full details of the Abpromise, please visit <https://www.abcam.cn/abpromise> or contact our technical team.

### Terms and conditions

- Guarantee only valid for products bought direct from Abcam or one of our authorized distributors