



# Anti-PECI/ECI2 antibody ab235322

[1 References](#) [2 图像](#)

### 概述

产品名称	Anti-PECI/ECI2抗体
描述	兔多克隆抗体to PECI/ECI2
宿主	Rabbit
经测试应用	适用于: WB, IHC-P
种属反应性	与反应: Mouse, Rat, Human
免疫原	Recombinant fragment corresponding to Human PECI/ECI2 aa 100-250. Database link: <a href="#">O75521</a>
	 <a href="#">Run BLAST with</a>  <a href="#">Run BLAST with</a>
阳性对照	WB: Rat heart lysate; Mouse heart and liver lysates. IHC-P: Human liver tissue.
常规说明	<p>The Life Science industry has been in the grips of a reproducibility crisis for a number of years. Abcam is leading the way in addressing this with our range of recombinant monoclonal antibodies and knockout edited cell lines for gold-standard validation. Please check that this product meets your needs before purchasing.</p> <p>If you have any questions, special requirements or concerns, please send us an inquiry and/or contact our Support team ahead of purchase. Recommended alternatives for this product can be found below, along with publications, customer reviews and Q&amp;As</p>

### 性能

形式	Liquid
存放说明	Shipped at 4°C. Store at +4°C short term (1-2 weeks). Upon delivery aliquot. Store at -20°C long term. Avoid freeze / thaw cycle.
存储溶液	pH: 7.40 Preservative: 0.03% Proclin 300 Constituents: PBS, 50% Glycerol (glycerin, glycerine)
纯度	Protein G purified
纯化说明	Purity >95%
克隆	多克隆
同种型	IgG

应用

The Abpromise guarantee      **Abpromise™**承诺保证使用ab235322于以下的经测试应用

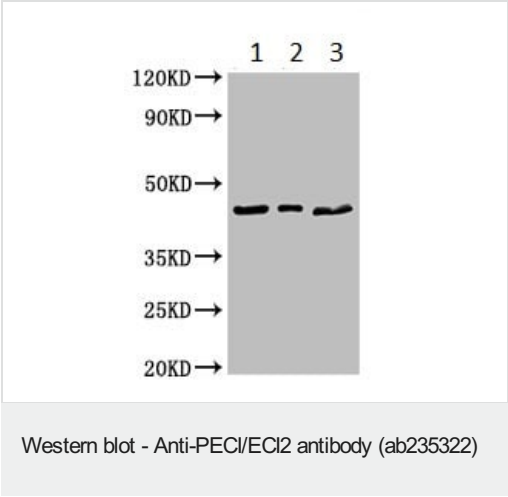
“应用说明”部分 下显示的仅为推荐的起始稀释度;实际最佳的稀释度/浓度应由使用者检定。

应用	Ab评论	说明
WB		1/500 - 1/5000. Predicted molecular weight: 44 kDa.
IHC-P		1/20 - 1/200.

靶标

功能	Able to isomerize both 3-cis and 3-trans double bonds into the 2-trans form in a range of enoyl-CoA species. Has a preference for 3-trans substrates.
组织特异性	Abundant in heart, skeletal muscle and liver. Expressed in CD34(+) T-cells and CD34(+) bone marrow cells.
序列相似性	In the C-terminal section; belongs to the enoyl-CoA hydratase/isomerase family. Contains 1 ACB (acyl-CoA-binding) domain.
细胞定位	Mitochondrion and Peroxisome matrix.

图片



**All lanes :** Anti-PECI/ECI2 antibody (ab235322) at 1/500 dilution

**Lane 1 :** Rat heart tissue lysate

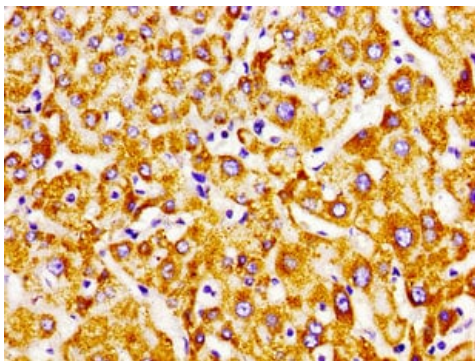
**Lane 2 :** Mouse heart tissue lysate

**Lane 3 :** Mouse liver tissue lysate

**Secondary**

**All lanes :** Goat polyclonal to rabbit IgG at 1/50000 dilution

**Predicted band size:** 44 kDa



Immunohistochemistry (Formalin/PFA-fixed paraffin-embedded sections) - Anti-PEC/ECI2 antibody (ab235322)

Paraffin-embedded human liver tissue stained for PEC/ECI2 using ab235322 at 1/100 dilution in immunohistochemical analysis.

**Please note:** All products are "FOR RESEARCH USE ONLY. NOT FOR USE IN DIAGNOSTIC PROCEDURES"

### Our Abpromise to you: Quality guaranteed and expert technical support

---

- Replacement or refund for products not performing as stated on the datasheet
- Valid for 12 months from date of delivery
- Response to your inquiry within 24 hours
- We provide support in Chinese, English, French, German, Japanese and Spanish
- Extensive multi-media technical resources to help you
- We investigate all quality concerns to ensure our products perform to the highest standards

If the product does not perform as described on this datasheet, we will offer a refund or replacement. For full details of the Abpromise, please visit <https://www.abcam.cn/abpromise> or contact our technical team.

### Terms and conditions

---

- Guarantee only valid for products bought direct from Abcam or one of our authorized distributors