

PE Anti-STAT6 antibody [YE361] ab223917

重组 RabMAb

2 图像

概述

产品名称	PE Anti-STAT6抗体[YE361]
描述	PE兔单克隆抗体[YE361] to STAT6
宿主	Rabbit
偶联物	PE. Ex: 488nm, Em: 575nm
经测试应用	适用于: Flow Cyt (Intra)
种属反应性	与反应: Mouse 预测可用于: Human 
免疫原	Synthetic peptide. This information is proprietary to Abcam and/or its suppliers.
阳性对照	Flow Cyt (intra): NIH3T3 cells
常规说明	<p>This product is a recombinant monoclonal antibody, which offers several advantages including:</p> <ul style="list-style-type: none">- High batch-to-batch consistency and reproducibility- Improved sensitivity and specificity- Long-term security of supply- Animal-free production <p>For more information see here.</p> <p>Our RabMAb[®] technology is a patented hybridoma-based technology for making rabbit monoclonal antibodies. For details on our patents, please refer to RabMAb[®] patents.</p>

性能

形式	Liquid
存放说明	Shipped at 4°C. Upon delivery aliquot. Store at +4°C. Do Not Freeze. Store In the Dark.
存储溶液	pH: 7.4 Preservative: 0.02% Sodium azide Constituents: 1% BSA, PBS
纯度	Protein A purified
克隆	单克隆
克隆编号	YE361
同种型	IgG

应用

The Abpromise guarantee

Abpromise™承诺保证使用ab223917于以下的经测试应用

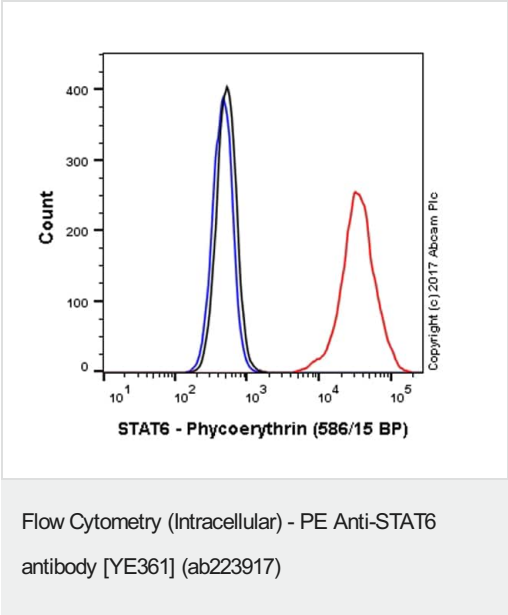
“应用说明”部分 下显示的仅为推荐的起始稀释度;实际最佳的稀释度/浓度应由使用者检定。

应用	Ab评论	说明
Flow Cyt (Intra)		1/1000. The cellular localisation of this product has been verified in ICC/IF.

靶标

功能	Carries out a dual function: signal transduction and activation of transcription. Involved in interleukin-4 signalling.
序列相似性	Belongs to the transcription factor STAT family. Contains 1 SH2 domain.
翻译后修饰	Tyrosine phosphorylated following stimulation by IL-4 and IL-3.
细胞定位	Cytoplasm. Nucleus. Translocated into the nucleus in response to phosphorylation.

图片



Overlay histogram showing NIH3T3 cells stained with ab223917 (red line). The cells were fixed with 80% methanol (5 min) and then permeabilized with 0.1% PBS-Triton X-100 for 15 min. The cells were then incubated in 1x PBS / 10% normal goat serum to block non-specific protein-protein interactions followed by the antibody (ab223917, 1/1000 dilution) for 30 min at 22°C.

Isotype control antibody (black line) was Rabbit IgG (monoclonal) Phycoerythrin ([ab209478](#)) used at the same concentration and conditions as the primary antibody. Unlabelled sample (blue line) was also used as a control.

Acquisition of >5,000 events were collected using a 50 mW Yellow/Green laser (561nm) and 586/15 bandpass filter.

This antibody gave a positive signal in NIH3T3 cells fixed with 4% formaldehyde (10 min)/permeabilized with 0.1% PBS-Triton X-100 for 15 min used under the same conditions.

Why choose a recombinant antibody?



Research with confidence
Consistent and reproducible results



Long-term and scalable supply
Recombinant technology



Success from the first experiment
Confirmed specificity



Ethical standards compliant
Animal-free production

PE Anti-STAT6 antibody [YE361] (ab223917)

Please note: All products are "FOR RESEARCH USE ONLY. NOT FOR USE IN DIAGNOSTIC PROCEDURES"

Our Abpromise to you: Quality guaranteed and expert technical support

- Replacement or refund for products not performing as stated on the datasheet
- Valid for 12 months from date of delivery
- Response to your inquiry within 24 hours
- We provide support in Chinese, English, French, German, Japanese and Spanish
- Extensive multi-media technical resources to help you
- We investigate all quality concerns to ensure our products perform to the highest standards

If the product does not perform as described on this datasheet, we will offer a refund or replacement. For full details of the Abpromise, please visit <https://www.abcam.cn/abpromise> or contact our technical team.

Terms and conditions

- Guarantee only valid for products bought direct from Abcam or one of our authorized distributors