

PE Anti-PDGFR alpha antibody [EPR22059-270] ab270086

重组 RabMAb

2 图像

概述

产品名称	PE Anti-PDGFR alpha抗体[EPR22059-270]
描述	PE兔单克隆抗体[EPR22059-270] to PDGFR alpha
宿主	Rabbit
偶联物	PE. Ex: 488nm, Em: 575nm
经测试应用	适用于: Flow Cyt
种属反应性	与反应: Human
免疫原	Recombinant fragment. This information is proprietary to Abcam and/or its suppliers.
阳性对照	Flow cyt: SH-SY5Y cells.
常规说明	<p>This product is a recombinant monoclonal antibody, which offers several advantages including:</p> <ul style="list-style-type: none">- High batch-to-batch consistency and reproducibility- Improved sensitivity and specificity- Long-term security of supply- Animal-free production <p>For more information see here.</p> <p>Our RabMAb[®] technology is a patented hybridoma-based technology for making rabbit monoclonal antibodies. For details on our patents, please refer to RabMAb[®] patents.</p>

性能

形式	Liquid
存放说明	Shipped at 4°C. Store at +4°C short term (1-2 weeks). Upon delivery aliquot. Store at +4°C. Store In the Dark.
存储溶液	pH: 7.40 Preservative: 0.02% Sodium azide Constituents: 98.98% PBS, 1% BSA
纯度	Protein A purified
克隆	单克隆
克隆编号	EPR22059-270
同种型	IgG

应用

The Abpromise guarantee

Abpromise™承诺保证使用ab270086于以下的经测试应用

“应用说明”部分 下显示的仅为推荐的起始稀释度;实际最佳的稀释度/浓度应由使用者检定。

应用	Ab评论	说明
Flow Cyt		1/2500.

靶标

功能

Receptor that binds both PDGFA and PDGFB and has a tyrosine-protein kinase activity.

组织特异性

Expressed in primary and metastatic colon tumors and in normal colon tissue. Tumors may express a different isoform to that found in normal tissue.

疾病相关

Note=A chromosomal aberration involving PDGFRA is found in some cases of hypereosinophilic syndrome. Interstitial chromosomal deletion del(4)(q12q12) causes the fusion of FIP1L1 and PDGFRA (FIP1L1-PDGFR).

序列相似性

Belongs to the protein kinase superfamily. Tyr protein kinase family. CSF-1/PDGF receptor subfamily.

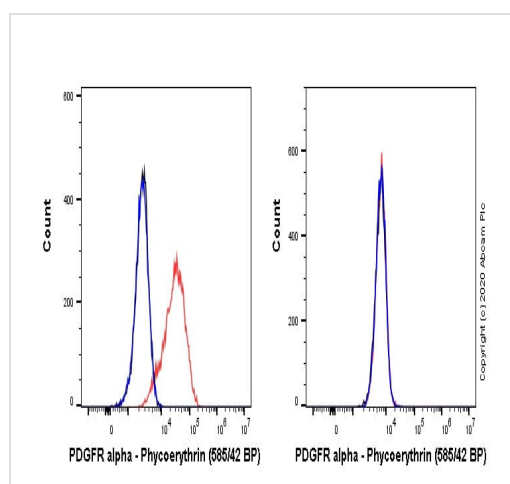
Contains 5 Ig-like C2-type (immunoglobulin-like) domains.

Contains 1 protein kinase domain.

细胞定位

Membrane.

图片



Flow Cytometry - PE Anti-PDGFR alpha antibody
[EPR22059-270] (ab270086)

Flow cytometry overlay histogram showing left SH-SY5Y (human neuroblastoma cell line from bone marrow) positive cells and right negative A431 (human epidermoid carcinoma cell line) cells stained with ab270086 (red line). The cells were incubated in 1x PBS containing 10% normal goat serum to block non-specific protein-protein interaction followed by the antibody (ab270086) (1x 10⁶ in 100μL at 0.2μg/mL (1/2500)) for 30 min on ice.

Isotype control antibody (black line) was Rabbit IgG (monoclonal) Phycoerythrin (**ab209478**) used at the same concentration and conditions as the primary antibody. Unlabelled sample (blue line) was also used as a control.

Acquisition of >5000 events were collected using a 50 mW Yellow/Green laser (561nm) and 585/42 bandpass filter.

Why choose a recombinant antibody?



Research with confidence
Consistent and reproducible results



Long-term and scalable supply
Recombinant technology



Success from the first experiment
Confirmed specificity



Ethical standards compliant
Animal-free production

PE Anti-PDGFR alpha antibody [EPR22059-270]
(ab270086)

Please note: All products are "FOR RESEARCH USE ONLY. NOT FOR USE IN DIAGNOSTIC PROCEDURES"

Our Abpromise to you: Quality guaranteed and expert technical support

- Replacement or refund for products not performing as stated on the datasheet
- Valid for 12 months from date of delivery
- Response to your inquiry within 24 hours
- We provide support in Chinese, English, French, German, Japanese and Spanish
- Extensive multi-media technical resources to help you
- We investigate all quality concerns to ensure our products perform to the highest standards

If the product does not perform as described on this datasheet, we will offer a refund or replacement. For full details of the Abpromise, please visit <https://www.abcam.cn/abpromise> or contact our technical team.

Terms and conditions

- Guarantee only valid for products bought direct from Abcam or one of our authorized distributors