

PE Anti-HLA G antibody [MEM-G/9] ab24384

[11 References](#) [1 图像](#)

概述

产品名称	PE Anti-HLA G抗体[MEM-G/9]
描述	PE小鼠单克隆抗体[MEM-G/9] to HLA G
宿主	Mouse
偶联物	PE. Ex: 488nm, Em: 575nm
特异性	The antibody reacts with native form of human HLA-G1 on the cell surface as well as with soluble HLA-G5 isoform in its beta2-microglobulin associated form. We have data to indicate that this antibody may not cross react with Mouse. However, this has not been conclusively tested and expression levels may vary in certain cell lines/tissues.
经测试应用	适用于: Flow Cyt
种属反应性	与反应: Recombinant fragment
免疫原	Recombinant full length protein (Human) refolded with beta2-microglobulin and peptide.
常规说明	<p>The purified antibody is conjugated with R-Phycoerythrin (PE) under optimum conditions. The conjugate is purified by size-exclusion chromatography.</p> <p>The Life Science industry has been in the grips of a reproducibility crisis for a number of years. Abcam is leading the way in addressing this with our range of recombinant monoclonal antibodies and knockout edited cell lines for gold-standard validation. Please check that this product meets your needs before purchasing.</p> <p>If you have any questions, special requirements or concerns, please send us an inquiry and/or contact our Support team ahead of purchase. Recommended alternatives for this product can be found below, along with publications, customer reviews and Q&As</p>

性能

形式	Liquid
存放说明	Shipped at 4°C. Store at +4°C.
存储溶液	<p>pH: 7.4</p> <p>Preservative: 0.097% Sodium azide</p> <p>Constituents: PBS, 0.2% BSA</p>
纯度	Protein A purified
克隆	单克隆

克隆编号MEM-G/9

同种型IgG1

应用

The Abpromise guarantee

Abpromise™承诺保证使用ab24384于以下的经测试应用

“应用说明”部分 下显示的仅为推荐的起始稀释度;实际最佳的稀释度/浓度应由使用者检定。

应用	Ab评论	说明
Flow Cyt		Use a concentration of 1 - 4 µg/ml. Do not fix cells. <u>ab91357</u> - Mouse monoclonal IgG1, is suitable for use as an isotype control with this antibody.

靶标

功能

Involved in the presentation of foreign antigens to the immune system. Plays a role in maternal tolerance of the fetus by mediating protection from the deleterious effects of natural killer cells, cytotoxic T lymphocytes, macrophages and mononuclear cells.

组织特异性

Expressed in trophoblasts.

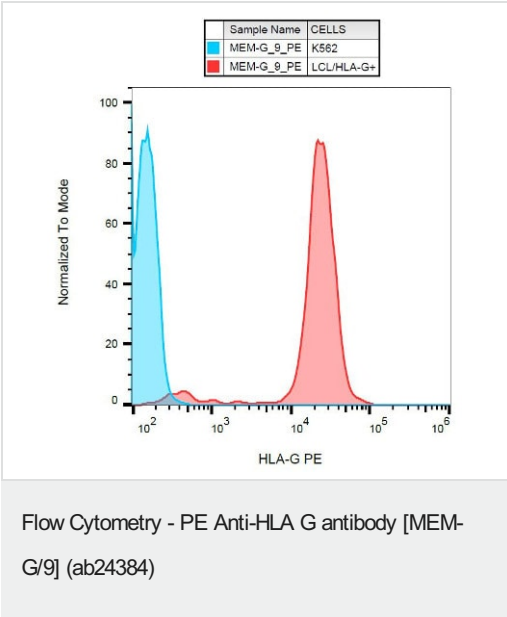
序列相似性

Belongs to the MHC class I family.
Contains 1 Ig-like C1-type (immunoglobulin-like) domain.

细胞定位

Membrane.

图片



Surface staining of HLA-G1 transfectants (LCL-HLA-G1) using anti-HLA-G (MEM-G/9) PE.

Please note: All products are "FOR RESEARCH USE ONLY. NOT FOR USE IN DIAGNOSTIC PROCEDURES"

Our Abpromise to you: Quality guaranteed and expert technical support

- Replacement or refund for products not performing as stated on the datasheet
- Valid for 12 months from date of delivery
- Response to your inquiry within 24 hours

- We provide support in Chinese, English, French, German, Japanese and Spanish
- Extensive multi-media technical resources to help you
- We investigate all quality concerns to ensure our products perform to the highest standards

If the product does not perform as described on this datasheet, we will offer a refund or replacement. For full details of the Abpromise, please visit <https://www.abcam.cn/abpromise> or contact our technical team.

Terms and conditions

- Guarantee only valid for products bought direct from Abcam or one of our authorized distributors