

### PE Anti-F4/80 antibody [Cl:A3-1] ab105156

[7 References](#)   [1 图像](#)

#### 概述

产品名称	PE Anti-F4/80抗体[Cl:A3-1]
描述	PE大鼠单克隆抗体[Cl:A3-1] to F4/80
宿主	Rat
偶联物	PE. Ex: 488nm, Em: 575nm
特异性	ab105156 recognises the murine F4/80 antigen.
经测试应用	<b>适用于:</b> Flow Cyt
种属反应性	<b>与反应:</b> Mouse
免疫原	Tissue, cells or virus corresponding to Mouse F4/80. Thioglycollate stimulated peritoneal cavity macrophages from C57/BL mice.
阳性对照	Mouse J774 cells
常规说明	<p>Clone Cl:A3-1 has been reported to modulate cytokine levels released in response to Listeria monocytogenes.</p> <p>The Life Science industry has been in the grips of a reproducibility crisis for a number of years. Abcam is leading the way in addressing this with our range of recombinant monoclonal antibodies and knockout edited cell lines for gold-standard validation. Please check that this product meets your needs before purchasing.</p> <p>If you have any questions, special requirements or concerns, please send us an inquiry and/or contact our Support team ahead of purchase. Recommended alternatives for this product can be found below, along with publications, customer reviews and Q&amp;As</p>

#### 性能

形式	Liquid
存放说明	Shipped at 4°C. Store at +4°C.
存储溶液	<p>pH: 7.40</p> <p>Preservative: 0.09% Sodium azide</p> <p>Constituents: 1% BSA, 5% Sucrose, PBS</p>
纯度	Protein A purified
Primary antibody说明	Clone Cl:A3-1 has been reported to modulate cytokine levels released in response to Listeria

	monocyto genes.
克隆	单克隆
克隆编号	Cl:A3-1
骨髓瘤	NS1
同种型	IgG2b

应用

The Abpromise guarantee
Abpromise™承诺保证使用ab105156于以下的经测试应用

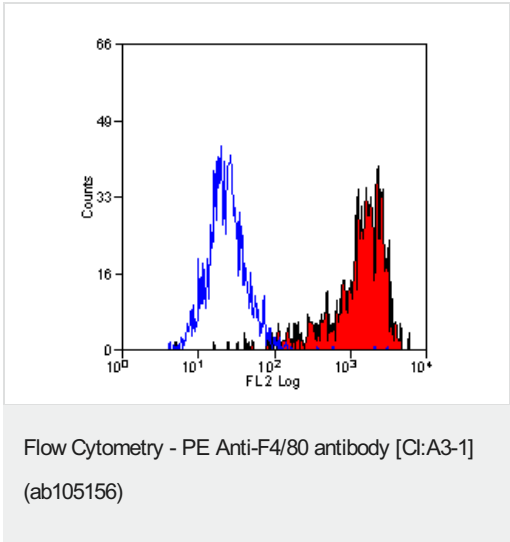
“应用说明”部分 下显示的仅为推荐的起始稀释度;实际最佳的稀释度/浓度应由使用者检定。

应用	Ab评论	说明
Flow Cyt		Use 10µl for 10 <sup>6</sup> cells. in 100 µl.  <b>ab136585</b> - Rat monoclonal IgG2b, is suitable for use as an isotype control with this antibody.

靶标

功能	Orphan receptor involved in cell adhesion and probably in cell-cell interactions specifically involving cells of the immune system. May play a role in regulatory T-cells (Treg) development.
组织特异性	Expression is restricted to eosinophils.
序列相似性	Belongs to the G-protein coupled receptor 2 family. Adhesion G-protein coupled receptor (ADGR) subfamily. Contains 6 EGF-like domains. Contains 1 GPS domain.
细胞定位	Cell membrane.

图片



Flow cytometry staining of mouse J774 cells with ab105156.

**Please note:** All products are "FOR RESEARCH USE ONLY. NOT FOR USE IN DIAGNOSTIC PROCEDURES"

### **Our Abpromise to you: Quality guaranteed and expert technical support**

---

- Replacement or refund for products not performing as stated on the datasheet
- Valid for 12 months from date of delivery
- Response to your inquiry within 24 hours
  
- We provide support in Chinese, English, French, German, Japanese and Spanish
- Extensive multi-media technical resources to help you
- We investigate all quality concerns to ensure our products perform to the highest standards

If the product does not perform as described on this datasheet, we will offer a refund or replacement. For full details of the Abpromise, please visit <https://www.abcam.cn/abpromise> or contact our technical team.

### **Terms and conditions**

---

- Guarantee only valid for products bought direct from Abcam or one of our authorized distributors