

### Anti-PDHB antibody [17A5E2H8] ab110331

★★★★★ [1 Abreviews](#) [5 References](#) [2 图像](#)

#### 概述

产品名称	Anti-PDHB抗体[17A5E2H8]
描述	小鼠单克隆抗体[17A5E2H8] to PDHB
宿主	Mouse
经测试应用	适用于: IHC-P, WB
种属反应性	与反应: Mouse, Rat, Cow, Human
免疫原	Full length protein. This information is considered to be commercially sensitive.
阳性对照	Isolated mitochondria from Human, Bovine, Rat and Mouse hearts; HepG2 whole cell lysate ( <a href="#">ab7900</a> ). This antibody gave a positive result in IHC in the following FFPE tissue: Human normal duodenum.
常规说明	<p>This antibody clone is manufactured by Abcam. If you require a custom buffer formulation or conjugation for your experiments, please contact <a href="mailto:orders@abcam.com">orders@abcam.com</a>.</p> <p>The Life Science industry has been in the grips of a reproducibility crisis for a number of years. Abcam is leading the way in addressing this with our range of recombinant monoclonal antibodies and knockout edited cell lines for gold-standard validation. Please check that this product meets your needs before purchasing.</p> <p>If you have any questions, special requirements or concerns, please send us an inquiry and/or contact our Support team ahead of purchase. Recommended alternatives for this product can be found below, along with publications, customer reviews and Q&amp;As</p> <p>Product was previously marketed under the MitoSciences sub-brand.</p>

#### 性能

形式	Liquid
存放说明	Shipped at 4°C. Store at +4°C. Do Not Freeze.
存储溶液	<p>pH: 7.5</p> <p>Preservative: 0.02% Sodium azide</p> <p>Constituent: HEPES buffered saline</p>
纯度	IgG fraction
纯化说明	ab110331 was produced in vitro using hybridomas grown in serum-free medium, and then purified by biochemical fractionation.

克隆	单克隆
克隆编号	17A5E2H8
同种型	IgG1
轻链类型	kappa

应用

The Abpromise guarantee      **Abpromise™**承诺保证使用ab110331于以下的经测试应用

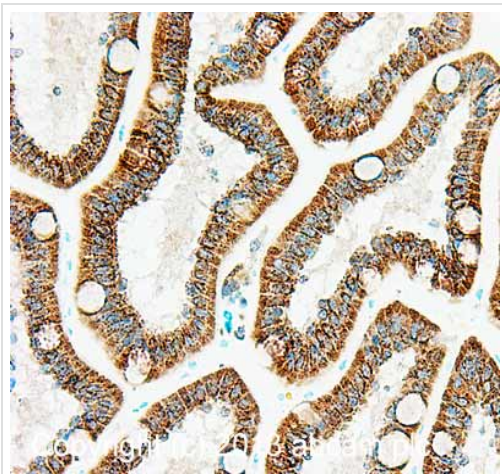
“应用说明”部分 下显示的仅为推荐的起始稀释度;实际最佳的稀释度/浓度应由使用者检定。

应用	Ab评论	说明
IHC-P		Use a concentration of 5 µg/ml. Perform heat mediated antigen retrieval with citrate buffer pH 6 before commencing with IHC staining protocol.
WB	★★★★★ (1)	Use a concentration of 1 µg/ml. Predicted molecular weight: 39 kDa.

靶标

功能	The pyruvate dehydrogenase complex catalyzes the overall conversion of pyruvate to acetyl-CoA and CO(2). It contains multiple copies of three enzymatic components: pyruvate dehydrogenase (E1), dihydrolipoamide acetyltransferase (E2) and lipoamide dehydrogenase (E3).
疾病相关	Defects in PDHB are a cause of pyruvate dehydrogenase E1 component deficiency (PDHE1 deficiency) [MIM:312170]. PDHE1 deficiency is the most common enzyme defect in patients with primary lactic acidosis. It is associated with variable clinical phenotypes ranging from neonatal death to prolonged survival complicated by developmental delay, seizures, ataxia, apnea, and in some cases to an X-linked form of Leigh syndrome (LS) (Leigh encephalomyelopathy).
细胞定位	Mitochondrion matrix.

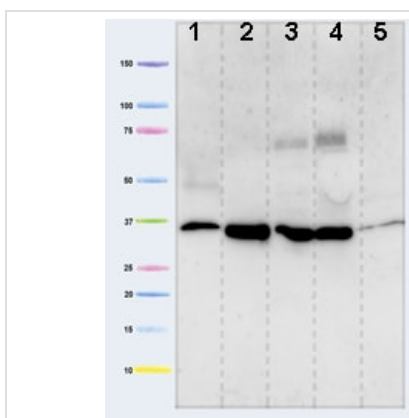
图片



Immunohistochemistry (Formalin/PFA-fixed paraffin-embedded sections) - Anti-PDHB antibody [17A5E2H8] (ab110331)

IHC image of PDHB staining in Human normal duodenum formalin fixed paraffin embedded tissue section, performed on a Leica Bond™ system using the standard protocol F. The section was pre-treated using heat mediated antigen retrieval with sodium citrate buffer (pH6, epitope retrieval solution 1) for 20 mins. The section was then incubated with ab110331, 5µg/ml, for 15 mins at room temperature and detected using an HRP conjugated compact polymer system. DAB was used as the chromogen. The section was then counterstained with haematoxylin and mounted with DPX.

For other IHC staining systems (automated and non-automated) customers should optimize variable parameters such as antigen retrieval conditions, primary antibody concentration and antibody incubation times.



Western blot - Anti-PDHB antibody [17A5E2H8] (ab110331)

**All lanes :** Anti-PDHB antibody [17A5E2H8] (ab110331) at 1 µg/ml

**Lane 1 :** Isolated mitochondria from Human heart at 10 µg/ml

**Lane 2 :** Isolated mitochondria from Bovine heart at 4 µg/ml

**Lane 3 :** Isolated mitochondria from Rat heart at 10 µg/ml

**Lane 4 :** Isolated mitochondria from Mouse heart at 10 µg/ml

**Lane 5 :** HepG2 cell lysate at 20 µg/ml

**Predicted band size:** 39 kDa

**Please note:** All products are "FOR RESEARCH USE ONLY. NOT FOR USE IN DIAGNOSTIC PROCEDURES"

### Our Abpromise to you: Quality guaranteed and expert technical support

- Replacement or refund for products not performing as stated on the datasheet
- Valid for 12 months from date of delivery
- Response to your inquiry within 24 hours
- We provide support in Chinese, English, French, German, Japanese and Spanish
- Extensive multi-media technical resources to help you
- We investigate all quality concerns to ensure our products perform to the highest standards

If the product does not perform as described on this datasheet, we will offer a refund or replacement. For full details of the Abpromise, please visit <https://www.abcam.cn/abpromise> or contact our technical team.

## Terms and conditions

---

- Guarantee only valid for products bought direct from Abcam or one of our authorized distributors