

Anti-PDE4 antibody ab14628

17 References 2 图像

概述	
产品名称	Anti-PDE4抗体
描述	兔多克隆抗体to PDE4
宿主	Rabbit
特异性	This antibody detects all known PDE4 A and D variants including PDE4A1, A5, Ax, A8 and PDE4D1-D5. It has low affinity for PDE4B variants.
经测试应用	适用于: WB, ICC/IF
种属反应性	与反应: Mouse, Rat, Human
免疫原	Synthetic peptide. This information is proprietary to Abcam and/or its suppliers.
阳性对照	Rat brain.
常规说明	<p>The Life Science industry has been in the grips of a reproducibility crisis for a number of years. Abcam is leading the way in addressing this with our range of recombinant monoclonal antibodies and knockout edited cell lines for gold-standard validation. Please check that this product meets your needs before purchasing.</p> <p>If you have any questions, special requirements or concerns, please send us an inquiry and/or contact our Support team ahead of purchase. Recommended alternatives for this product can be found below, along with publications, customer reviews and Q&amp;As</p>
性能	
形式	Liquid
存放说明	Shipped at 4°C. Store at +4°C short term (1-2 weeks). Upon delivery aliquot. Store at -20°C or -80°C. Avoid freeze / thaw cycle.
存储溶液	Preservative: 0.02% Thimerosal (merthiolate)
纯度	Immunogen affinity purified
克隆	多克隆
同种型	IgG
应用	

“应用说明”部分 下显示的仅为推荐的起始稀释度;实际最佳的稀释度/浓度应由使用者检定。

应用	Ab评论	说明
WB		Use at an assay dependent dilution.
ICC/IF		Use a concentration of 1 µg/ml.

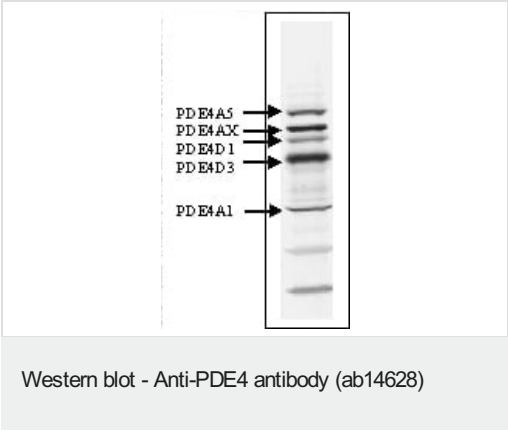
靶标

**相关性**

The cAMP-specific Phosphodiesterase type 4 (PDE4) family is comprised of 4 genes (PDE4 A, B, C and D) with multiple splice variants generated by RNA splicing and use of alternate initiation sites. The cAMP-dependent protein kinase A modulates the enzyme activity of some PDE4 family members by phosphorylation / dephosphorylation mechanisms. Such short-term regulatory mechanisms are necessary for rapid changes in the cAMP levels in cells. PDE4 family selective inhibitor, rolipram inhibits all members of the PDE4 family. In rodents inhibition of PDE4 enzymes by rolipram attenuated short- and long-term memory impairment produced by the administration of scopolamine and MK801. Interaction of these enzymes with cellular scaffolding proteins plays important role in PDE4 compartmentalization and cAMP-dependent signaling.

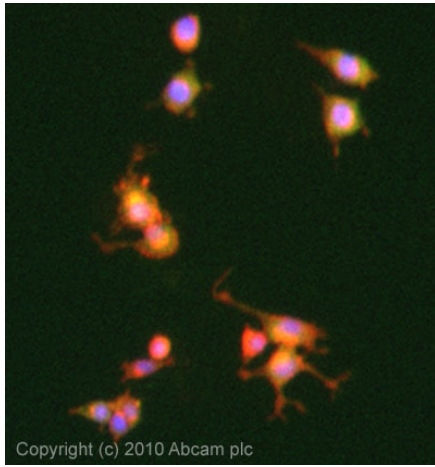
**细胞定位** Cell Membrane

图片



ab 14628 detecting 3 isoforms of PDE4A subclasses (PDE4A1, PDE4A5 and PDE4Ax), two isoforms of PDE4D (PDE4D1, PDE4D3) in rat brain by Western blot.

ab 14628 detecting 3 isoforms of PDE4A subclasses (PDE4A1, PDE4A5 and PDE4Ax) and two isoforms of PDE4D (PDE4D1, PDE4D3) in rat brain by Western blot.



ICC/IF image of ab14628 stained PC12 cells. The cells were 4% formaldehyde fixed (10 min) and then incubated in 1%BSA / 10% normal goat serum / 0.3M glycine in 0.1% PBS-Tween for 1h to permeabilise the cells and block non-specific protein-protein interactions. The cells were then incubated with the antibody (ab14628, 1µg/ml) overnight at +4°C. The secondary antibody (green) was Alexa Fluor® 488 goat anti-rabbit IgG (H+L) used at a 1/1000 dilution for 1h. Alexa Fluor® 594 WGA was used to label plasma membranes (red) at a 1/200 dilution for 1h. DAPI was used to stain the cell nuclei (blue) at a concentration of 1.43µM.

Immunocytochemistry/ Immunofluorescence - Anti-PDE4 antibody (ab14628)

**Please note:** All products are "FOR RESEARCH USE ONLY. NOT FOR USE IN DIAGNOSTIC PROCEDURES"

### Our Abpromise to you: Quality guaranteed and expert technical support

- Replacement or refund for products not performing as stated on the datasheet
- Valid for 12 months from date of delivery
- Response to your inquiry within 24 hours
- We provide support in Chinese, English, French, German, Japanese and Spanish
- Extensive multi-media technical resources to help you
- We investigate all quality concerns to ensure our products perform to the highest standards

If the product does not perform as described on this datasheet, we will offer a refund or replacement. For full details of the Abpromise, please visit <https://www.abcam.cn/abpromise> or contact our technical team.

### Terms and conditions

- Guarantee only valid for products bought direct from Abcam or one of our authorized distributors