


Anti-PDE3B antibody ab99290

2 References **2 图像**

概述

产品名称	Anti-PDE3B抗体
描述	兔多克隆抗体to PDE3B
宿主	Rabbit
经测试应用	适用于: WB, IP
种属反应性	与反应: Human 预测可用于: Horse, Chicken, Turkey, Chimpanzee, Rhesus monkey, Gorilla, Orangutan, Elephant 
免疫原	Synthetic peptide corresponding to a region between residue 1062 and 1112 of human PDE3B. (NP_000913.2)
阳性对照	HeLa whole cell lysate (ab150035)
常规说明	<p>The Life Science industry has been in the grips of a reproducibility crisis for a number of years. Abcam is leading the way in addressing this with our range of recombinant monoclonal antibodies and knockout edited cell lines for gold-standard validation. Please check that this product meets your needs before purchasing.</p> <p>If you have any questions, special requirements or concerns, please send us an inquiry and/or contact our Support team ahead of purchase. Recommended alternatives for this product can be found below, along with publications, customer reviews and Q&As</p>

性能

形式	Liquid
存放说明	Shipped at 4°C. Upon delivery aliquot and store at -20°C. Avoid freeze / thaw cycles.
存储溶液	<p>pH: 6.8</p> <p>Preservative: 0.09% Sodium azide</p> <p>Constituents: 0.1% BSA, Tris buffered saline</p>
纯度	Immunogen affinity purified
克隆	多克隆
同种型	IgG

应用

The Abpromise guarantee

Abpromise™承诺保证使用ab99290于以下的经测试应用

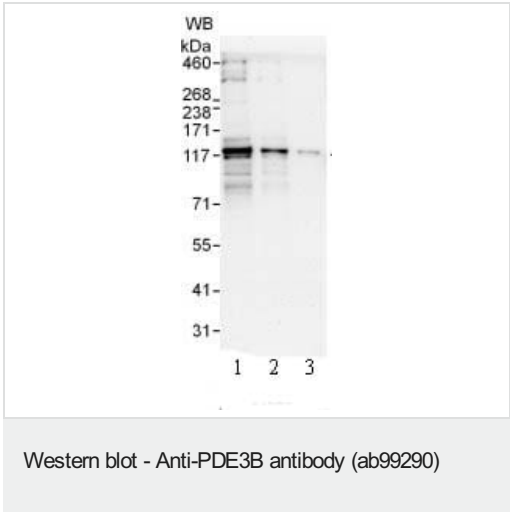
“应用说明”部分 下显示的仅为推荐的起始稀释度;实际最佳的稀释度/浓度应由使用者检定。

应用	Ab评论	说明
WB		1/2000 - 1/10000. Predicted molecular weight: 124 kDa.
IP		Use at 2-5 µg/mg of lysate.

靶标

功能	Cyclic nucleotide phosphodiesterase with a dual-specificity for the second messengers cAMP and cGMP, which are key regulators of many important physiological processes. May play a role in fat metabolism.
组织特异性	Abundant in adipose tissues.
序列相似性	Belongs to the cyclic nucleotide phosphodiesterase family. PDE3 subfamily.
细胞定位	Membrane.

图片



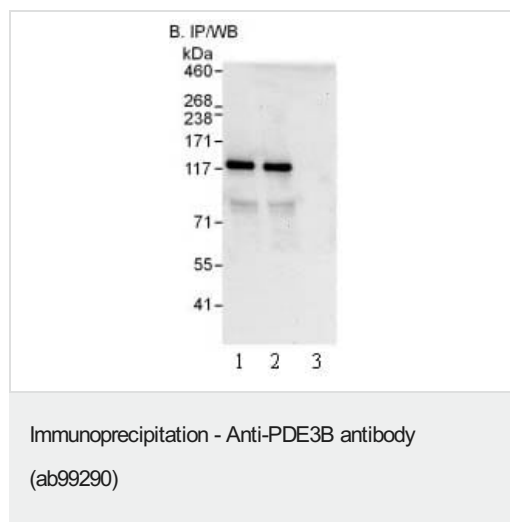
All lanes : Anti-PDE3B antibody (ab99290) at 0.04 µg/ml

Lane 1 : HeLa whole cell lysate at 50 µg

Lane 2 : HeLa whole cell lysate at 15 µg

Lane 3 : HeLa whole cell lysate at 5 µg

Predicted band size: 124 kDa



Lane 1: Detection of Human PDE3B by Immunoprecipitation from HeLa whole cell lysate (1 mg for IP, 20% of IP loaded), using an antibody recognising an upstream epitope of PDE3B.

Lane 2: Detection of Human PDE3B by Immunoprecipitation from HeLa whole cell lysate (1 mg for IP, 20% of IP loaded), using ab99290 at 3 µg/mg lysate for IP.

Lane 3 : Immunoprecipitation from HeLa whole cell lysate (1 mg for IP, 20% of IP loaded), using Control IgG.

Subsequent Western blot detection used ab99290 at 1 µg/ml.

Developed using the ECL technique with an exposure time of 10 seconds.

Please note: All products are "FOR RESEARCH USE ONLY. NOT FOR USE IN DIAGNOSTIC PROCEDURES"

Our Abpromise to you: Quality guaranteed and expert technical support

- Replacement or refund for products not performing as stated on the datasheet
- Valid for 12 months from date of delivery
- Response to your inquiry within 24 hours
- We provide support in Chinese, English, French, German, Japanese and Spanish
- Extensive multi-media technical resources to help you
- We investigate all quality concerns to ensure our products perform to the highest standards

If the product does not perform as described on this datasheet, we will offer a refund or replacement. For full details of the Abpromise, please visit <https://www.abcam.cn/abpromise> or contact our technical team.

Terms and conditions

- Guarantee only valid for products bought direct from Abcam or one of our authorized distributors