

Anti-PD-L1 antibody [BLR020E] ab243877

重组

1 References 10 图像

概述

产品名称	Anti-PD-L1抗体[BLR020E]
描述	兔单克隆抗体[BLR020E] to PD-L1
宿主	Rabbit
经测试应用	适用于: WB, ICC/IF, IHC-P, IP
种属反应性	与反应: Human
免疫原	Synthetic peptide within Human PD-L1 aa 250-290 (C terminal). The exact sequence is proprietary. NP_054862.1 and Gene ID 29126. Database link: <a href="#">Q9NZQ7</a>
常规说明	This product is sold under License from Bethyl Laboratories, Inc.

性能

形式	Liquid
存放说明	Shipped at 4°C. Store at +4°C short term (1-2 weeks). Upon delivery aliquot. Store at -20°C long term. Avoid freeze / thaw cycle.
存储溶液	pH: 7.8 Preservative: 0.09% Sodium azide Constituents: 98% Borate buffered saline, 0.1% BSA
纯化说明	Recombinant antibody was purified from cell culture supernatant.
克隆	单克隆
克隆编号	BLR020E
同种型	IgG

应用

The Abpromise guarantee      **Abpromise™**承诺保证使用ab243877于以下的经测试应用

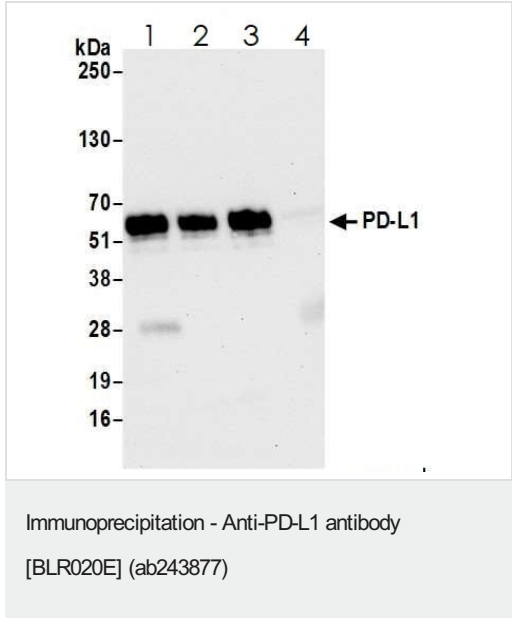
“应用说明”部分 下显示的仅为推荐的起始稀释度;实际最佳的稀释度/浓度应由使用者检定。

应用	Ab评论	说明
WB		1/1000.
ICC/IF		1/100 - 1/500.
IHC-P		1/100 - 1/500. Perform heat mediated antigen retrieval with citrate buffer pH 6 before commencing with IHC staining protocol.
IP		Use at an assay dependent concentration. Use 20µl/mg lysate.

靶标

功能	Involved in the costimulatory signal, essential for T-cell proliferation and production of IL10 and IFNG, in an IL2-dependent and a PDCD1-independent manner. Interaction with PDCD1 inhibits T-cell proliferation and cytokine production.
组织特异性	Highly expressed in the heart, skeletal muscle, placenta and lung. Weakly expressed in the thymus, spleen, kidney and liver. Expressed on activated T- and B-cells, dendritic cells, keratinocytes and monocytes.
序列相似性	Belongs to the immunoglobulin superfamily. BTN/MOG family. Contains 1 Ig-like C2-type (immunoglobulin-like) domain. Contains 1 Ig-like V-type (immunoglobulin-like) domain.
细胞定位	Cell membrane and Endomembrane system.

图片



PD-L1 was immunoprecipitated from HeLa RKO cell lysate (1.0 mg per IP reaction, 20% loaded) with ab243877 at 20 µl/mg lysate. Western blot was performed on the immunoprecipitate using ab243877 at 1/1000 dilution.

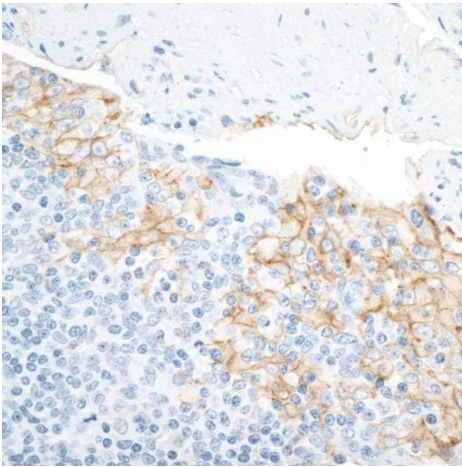
Lane 1: rabbit anti-PD-L1 recombinant monoclonal antibody IP in RKO whole cell lysate.

Lane 2: ab243877 IP in RKO whole cell lysate.

Lane 3: ab243877 IP in RKO whole cell lysate.

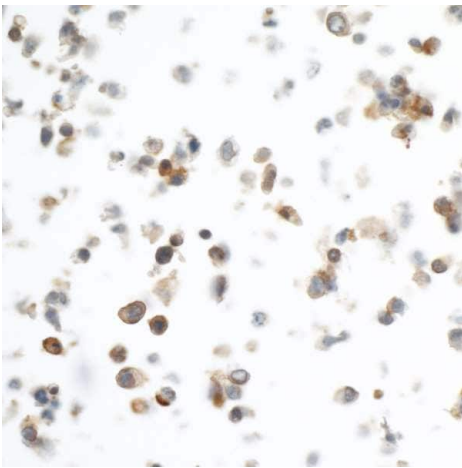
Lane 4: Control IgG in RKO whole cell lysate.

Detection: Chemiluminescence with an exposure time of 10 seconds



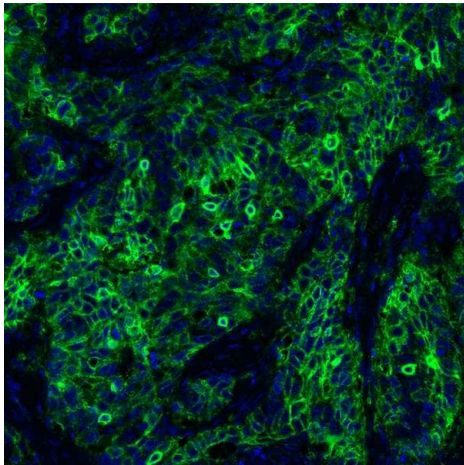
Immunohistochemistry (Formalin/PFA-fixed paraffin-embedded sections) - Anti-PD-L1 antibody  
[BLR020E] (ab243877)

Immunohistochemistry (Formalin/PFA-fixed paraffin-embedded sections) analysis of human tonsil tissue labelling PD-L1 with ab243877 and secondary HRP-conjugated goat anti-rabbit IgG.



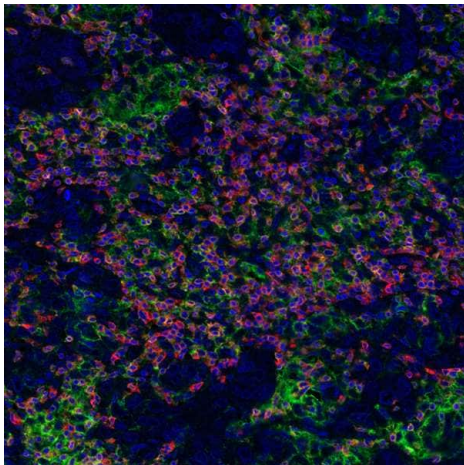
Immunohistochemistry (Formalin/PFA-fixed paraffin-embedded sections) - Anti-PD-L1 antibody  
[BLR020E] (ab243877)

Immunohistochemistry (Formalin/PFA-fixed paraffin-embedded sections) analysis of human Sup-M2 cells labelling PD-L1 with ab243877 and secondary HRP-conjugated goat anti-rabbit IgG.



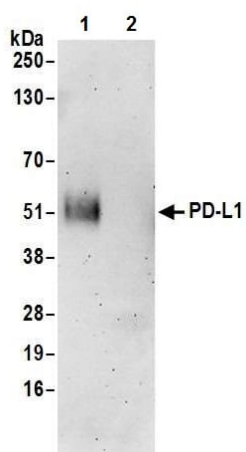
Formalin-fixed, paraffin-embedded human lung carcinoma tissue stained for PD-L1 using ab243877 at 1/250 dilution in immunohistochemical analysis. A HRP-conjugated goat anti-rabbit IgG was used as the secondary. Counterstain was DAPI.

Immunohistochemistry (Formalin/PFA-fixed paraffin-embedded sections) - Anti-PD-L1 antibody [BLR020E] (ab243877)



Immunohistochemistry (Formalin/PFA-fixed paraffin-embedded sections) analysis of human breast carcinoma tissue labelling PD-L1 with ab243877 and HRP-conjugated goat anti-rabbit secondary. CD8 alpha is in red, and CD3E is in green. Counterstain is DAPI (blue)

Immunohistochemistry (Formalin/PFA-fixed paraffin-embedded sections) - Anti-PD-L1 antibody [BLR020E] (ab243877)



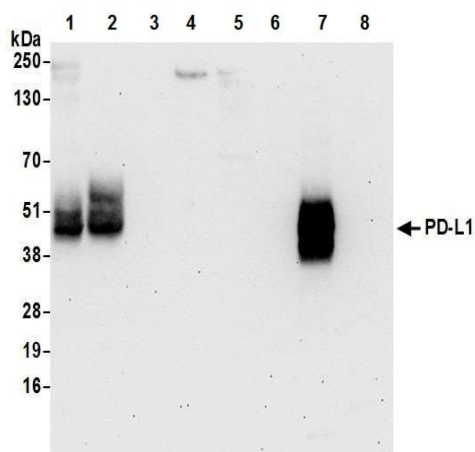
Immunoprecipitation - Anti-PD-L1 antibody  
[BLR020E] (ab243877)

PD-L1 was immunoprecipitated from SUP-M2 whole cell lysate with ab243877. Western blot was performed on the immunoprecipitate using ab243877 at 1/1000 dilution.

Lane 1: ab243877 IP in SUP-M2 whole cell lysate.

Lane 2: Control IgG in SUP-M2 whole cell lysate.

Detection: Chemiluminescence.



Western blot - Anti-PD-L1 antibody [BLR020E]  
(ab243877)

**All lanes** : Anti-PD-L1 antibody [BLR020E] (ab243877) at 1/1000 dilution

**Lane 1** : SUP-M2 whole cell lysate

**Lane 2** : HDLM-2 whole cell lysate

**Lane 3** : HEK-293T whole cell lysate

**Lane 4** : Ramos whole cell lysate

**Lane 5** : Jurkat whole cell lysate

**Lane 6** : PD-L2 whole cell lysate

**Lane 7** : PD-L1 whole cell lysate

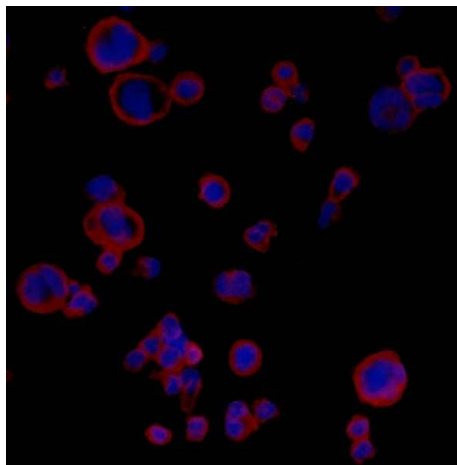
**Lane 8** : HEK-293 whole cell lysate

Lysates/proteins at 50 µg per lane.

### Secondary

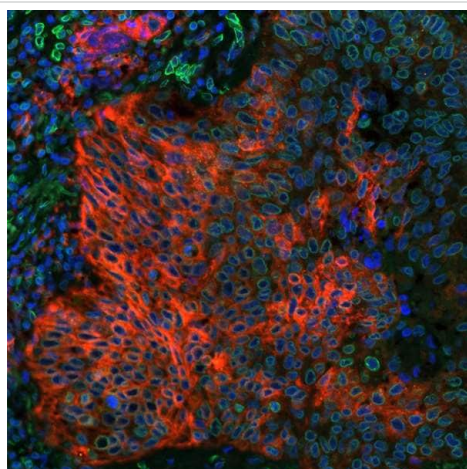
**All lanes** : HRP-conjugated goat anti-rabbit IgG antibody

Detection: chemiluminescence.



Immunocytochemistry/ Immunofluorescence - Anti-PD-L1 antibody [BLR020E] (ab243877)

Formaldehyde-fixed HDML-2 cells labeling PDL-1 using [ab243876](#) at 1/250 dilution in ICC/IF analysis. A HRP-conjugated goat anti-rabbit IgG was used as the secondary antibody. DAB staining



Immunohistochemistry (Formalin/PFA-fixed paraffin-embedded sections) - Anti-PD-L1 antibody [BLR020E] (ab243877)

Formalin-fixed, paraffin-embedded human lung carcinoma tissue stained for PD-L1 using ab243877 at 1/100 dilution in immunohistochemical analysis. A DyLight<sup>®</sup>-conjugated goat anti-rabbit IgG was used as the secondary. DAB staining.

### Why choose a recombinant antibody?



**Research with confidence**  
Consistent and reproducible results



**Long-term and scalable supply**  
Recombinant technology



**Success from the first experiment**  
Confirmed specificity



**Ethical standards compliant**  
Animal-free production

Anti-PD-L1 antibody [BLR020E] (ab243877)

**Please note:** All products are "FOR RESEARCH USE ONLY. NOT FOR USE IN DIAGNOSTIC PROCEDURES"

### Our Abpromise to you: Quality guaranteed and expert technical support

---

- Replacement or refund for products not performing as stated on the datasheet
- Valid for 12 months from date of delivery
- Response to your inquiry within 24 hours
- We provide support in Chinese, English, French, German, Japanese and Spanish
- Extensive multi-media technical resources to help you
- We investigate all quality concerns to ensure our products perform to the highest standards

If the product does not perform as described on this datasheet, we will offer a refund or replacement. For full details of the Abpromise, please visit <https://www.abcam.cn/abpromise> or contact our technical team.

### Terms and conditions

---

- Guarantee only valid for products bought direct from Abcam or one of our authorized distributors