

Anti-PD-L1 antibody [28-8] ab205921






[15 Abreviews](#)
[418 References](#)
[25 图像](#)

概述

产品名称	Anti-PD-L1抗体[28-8]
描述	兔单克隆抗体[28-8] to PD-L1
宿主	Rabbit
经测试应用	适用于: ICC/IF, IHC-P, WB, Flow Cyt, IHC-Fr
种属反应性	与反应: Human
免疫原	Fusion protein. This information is proprietary to Abcam and/or its suppliers.
阳性对照	Tissue: Human tonsil, head and neck squamous cell carcinoma and placenta tissues; L2987 cell line. Cell Lines: Positives: B-CPAP (high), ES-2 (medium), HCC70 (low), CHO-PDL1, U-87 MG For additional information - please refer to this publication: Programmed death-ligand 1 (PD-L1) expression in various tumor types - http://www.immunotherapyofcancer.org/content/1/S1/P53 IHC-Fr: Frozen human tonsil tissue sections

常规说明

FURTHER INFORMATION ON POSITIVE CONTROLS (Chinese version)

Tissue:

- Tonsil - with hyperreactive changes. Screening of hyper-reactive tonsils is recommended to find tonsil with the highest expression of PD-L1 in crypt epithelium, macrophages homing the germinal centers and interfollicular mononuclear leukocytes.
- Tumor tissues - prescreened for positive tumor and inflammatory infiltrates. PD-L1 expression varies by tumor type so screening is recommended to find positive and negative tumor controls.
- The following publication is useful for finding suitable tumor types for PD-L1 expression:
<http://www.immunotherapyofcancer.org/content/1/S1/P53>
- Note: Look for specimens with high numbers of inflammatory macrophages and mononuclear leukocytes.

Cell Lines:

- Positive controls: B-CPAP (high), ES-2 (medium), HCC70 (low).

Primary antibody negative control: Recombinant Rabbit IgG isotype control antibody, [ab172730](#).

Recombinant protein positive control: Recombinant human PD-L1 protein, [ab167713](#).

Immunohistochemistry usage:

For IHC usage on FFPE tissues, we recommend using PD-L1 IHC panel [ab236676](#), which contains PD-L1 antibody clone 28-8 (ab205921), HIER antigen retrieval reagent ([ab208572](#)) and IHC detection kit HRP/DAB ([ab209101](#)).

Western blot usage:

For clone 28-8, it is recommended to use Odyssey system. This system has the advantages of a wider dynamic range and less background than chemiluminescence.

This PD-L1 antibody [28-8] has been used as detector antibody in Human PD-L1 SimpleStep ELISA[®] kit: [ab214565](#) and [ab277712](#).

This product is a recombinant monoclonal antibody, which offers several advantages including:

- High batch-to-batch consistency and reproducibility
- Improved sensitivity and specificity
- Long-term security of supply
- Animal-free production

For more information [see here](#).

Our RabMAb[®] technology is a patented hybridoma-based technology for making rabbit monoclonal antibodies. For details on our patents, please refer to [RabMAb[®] patents](#).

性能

形式	Liquid
存放说明	Shipped at 4°C. Store at +4°C short term (1-2 weeks). Upon delivery aliquot. Store at -20°C long term. Avoid freeze / thaw cycle.
存储溶液	pH: 7.2 Preservative: 0.01% Sodium azide Constituents: 59% PBS, 40% Glycerol, 0.05% BSA
纯度	Protein A purified
克隆	单克隆
克隆编号	28-8
同种型	IgG

应用**The Abpromise guarantee**

Abpromise[™]承诺保证使用ab205921于以下的经测试应用

“应用说明”部分 下显示的仅为推荐的起始稀释度;实际最佳的稀释度/浓度应由使用者检定。

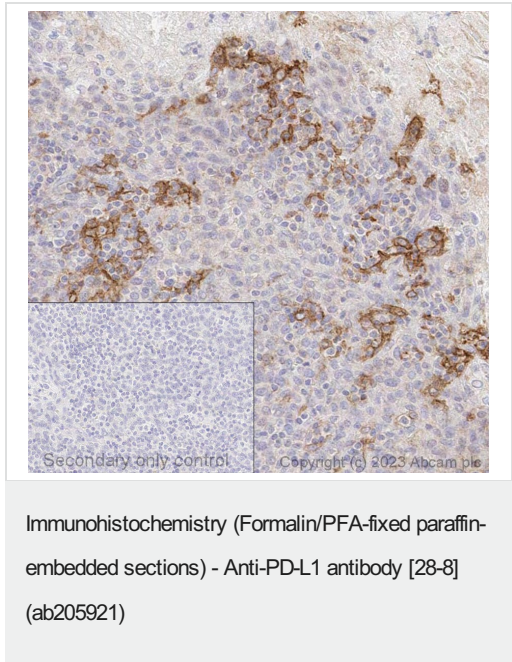
应用	Ab评论	说明
ICC/IF	★★★★★ (1)	Use a concentration of 2 µg/ml.
IHC-P	★★★★★ (7)	Use a concentration of 2 µg/ml. Perform heat mediated antigen retrieval before commencing with IHC staining protocol. Please refer to protocol section here . For antigen buffer for FFPE tissue, it is recommended to use Universal HIER antigen retrieval reagent (ab208572) .
WB	★★★★★ (5)	Use at an assay dependent concentration. Detects a band of approximately 40-60 kDa (predicted molecular weight: 33 kDa). Please refer to protocol section here .

应用	Ab评论	说明
Flow Cyt		Use at an assay dependent concentration. Please refer to protocol section here . ab172730 - Rabbit monoclonal IgG , is suitable for use as an isotype control with this antibody.
IHC-Fr	★★★★★ (1)	Use a concentration of 1 µg/ml.

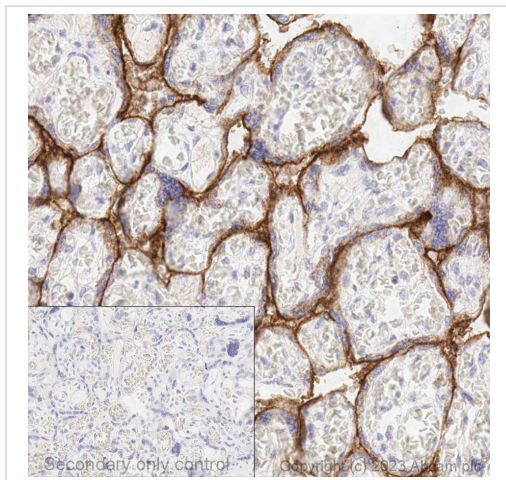
靶标

功能	Involved in the costimulatory signal, essential for T-cell proliferation and production of IL 10 and IFNG, in an IL2-dependent and a PDCD1-independent manner. Interaction with PDCD1 inhibits T-cell proliferation and cytokine production.
组织特异性	Highly expressed in the heart, skeletal muscle, placenta and lung. Weakly expressed in the thymus, spleen, kidney and liver. Expressed on activated T- and B-cells, dendritic cells, keratinocytes and monocytes.
序列相似性	Belongs to the immunoglobulin superfamily. BTN/MOG family. Contains 1 Ig-like C2-type (immunoglobulin-like) domain. Contains 1 Ig-like V-type (immunoglobulin-like) domain.
细胞定位	Cell membrane and Endomembrane system.

图片

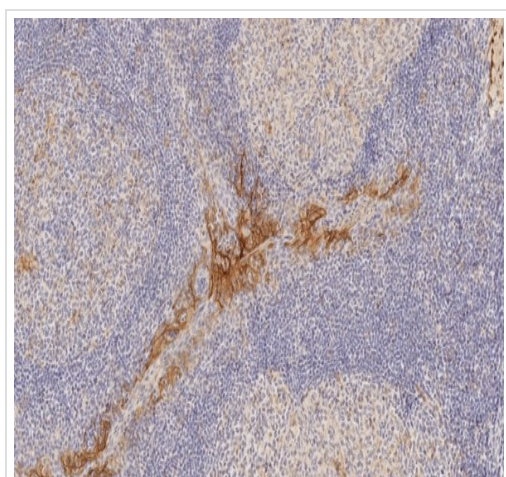


Immunohistochemical analysis of formalin-fixed paraffin-embedded human tonsil labelling PD-L1 with ab205921 at a dilution of 2µg/ml. The immunostaining was performed on a Ventana DISCOVERY ULTRA (Roche Tissue Diagnostics) instrument with an OptiView DAB IHC Detection Kit. Heat mediated antigen retrieval was conducted for 32min with ULTRA cell conditioning solution (CC1 pH8.5). ab205921 anti PD-L1 antibody was incubated at 37°C for 16min. Sections were counterstained with Hematoxylin II. Image inset shows absence of staining in secondary antibody only control.



Immunohistochemistry (Formalin/PFA-fixed paraffin-embedded sections) - Anti-PD-L1 antibody [28-8] (ab205921)

Immunohistochemical analysis of formalin-fixed paraffin-embedded human placenta labelling PD-L1 with ab205921 at a dilution of 2µg/ml. The immunostaining was performed on a Ventana DISCOVERY ULTRA (Roche Tissue Diagnostics) instrument with an OptiView DAB IHC Detection Kit. Heat mediated antigen retrieval was conducted for 32min with ULTRA cell conditioning solution (CC1 pH8.5). ab205921 anti PD-L1 antibody was incubated at 37°C for 16min. Sections were counterstained is with Hematoxylin II. Image inset shows absence of staining in secondary antibody only control.

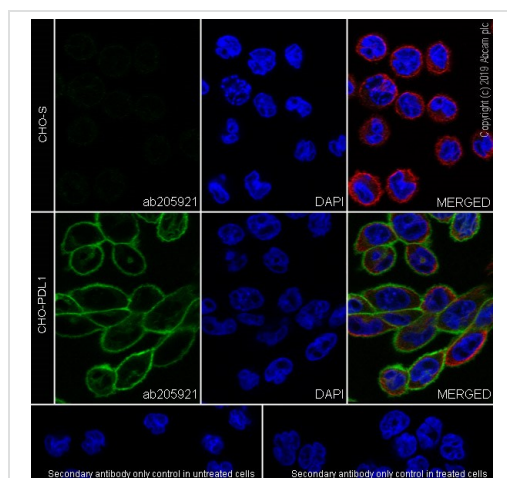


Immunohistochemistry (Formalin/PFA-fixed paraffin-embedded sections) - Anti-PD-L1 antibody [28-8] (ab205921)

IHC image of ab205921 staining PD-L1 in human tonsil formalin fixed paraffin embedded tissue sections*, performed on a Leica BOND RX (Polymer Refine kit). The section was pre-treated using heat mediated antigen retrieval with EDTA buffer (pH9, epitope retrieval solution 2) for 30 mins at 98°C. The section was then incubated with ab205921, 5µg/ml working concentration, for 60 mins at room temperature and detected using an HRP conjugated compact polymer system for 8 minutes at room temperature. DAB was used as the chromogen for 10 minutes at room temperature. The section was then counterstained with hematoxylin, blued, dehydrated, cleared and mounted with DPX.

For other IHC staining systems (automated and non-automated) customers should optimize variable parameters such as antigen retrieval conditions, primary antibody concentration and antibody incubation times.

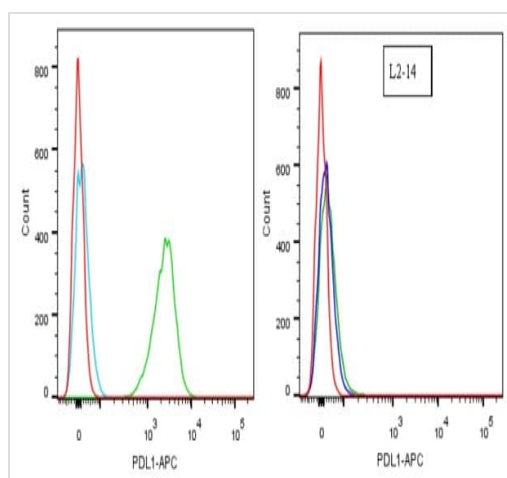
*Tissue obtained from the Human Research Tissue Bank, supported by the NIHR Cambridge Biomedical Research Centre



Immunocytochemistry/ Immunofluorescence - Anti-PD-L1 antibody [28-8] (ab205921)

Immunocytochemistry analysis of CHO-PDL1 (PD-L1 stably expressed Chinese hamster ovary epithelial cell) labeling PD-L1 with purified ab205921 at 1/400 dilution. Cells were fixed with 4% Paraformaldehyde and permeabilised with 0.1% tritonX-100. Goat anti rabbit IgG (Alexa Fluor[®] 488, [ab150077](#)) at 1/1000 (2 µg/ml) was used as the secondary antibody. [ab195889](#) Anti-alpha Tubulin antibody [DM1A] - Microtubule Marker (Alexa Fluor[®] 594) 1/200 (2.32 µg/ml) was used as counterstain. Nuclei were stained blue with DAPI.

Negative controls: Cells not transfected with PD-L1, and both the transfected and mock transfected cells without the primary antibody.



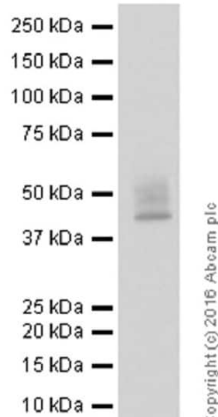
Flow Cytometry - Anti-PD-L1 antibody [28-8] (ab205921)

ab205921 specificity testing by Flow Cytometry (KO testing): Loss of detection on KO cells.

Strong detection with anti-PD-L1 (ab205921, clone 28-8) TALEN constructs targeting exon4 of human PD-L1, transcript variant 1 (NM_014143.3) and complete knock out (K.O) confirmed by deep sequencing in clone L2-14. Cell surface staining is almost completely eliminated in the L2987 L2-14 KO cell line.

For recommended Flow Cytometry (Flow Cyt) protocol, please refer to the protocol book in the protocol section and/or [here](#) ([downloadable copy](#)).

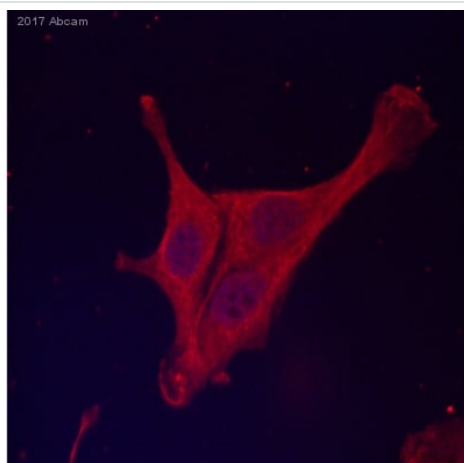
Alexa Fluor[®] 488 ([ab209959](#)) and Alexa Fluor[®] 647 ([ab209960](#)) conjugated versions are available for this clone.



Western blot - Anti-PD-L1 antibody [28-8]
(ab205921)

Primary ab Dilution 1:100 dilution, Secondary ab **Goat Anti-Rabbit IgG H&L (HRP) (ab97051) secondary antibody**, 1:20,000 dilution, Blocking and diluting buffer and concentration 5% NFDN/TBST, Lane 1: NCI-H1975 (Human non-small cell lung cancer epithelia), Observed MW 40-60 kDa.

For recommended Western Blot (WB) protocol for endogenous PD-L1 expression, please refer to the protocol book in the protocol section and/or [**here \(downloadable copy\)**](#).

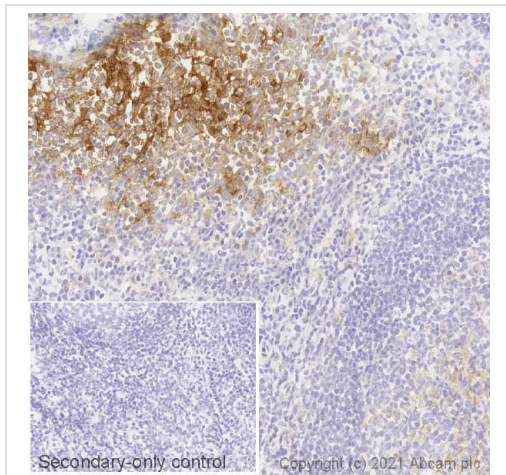


Immunocytochemistry/ Immunofluorescence - Anti-PD-L1 antibody [28-8] (ab205921)

This image is courtesy of an Abreview submitted by Dr. Dimitra Kalamida.

Paraformaldehyde-fixed, Triton X-100 permeabilized U-87 MG (human glioblastoma-astrocytoma epithelial cell line) cells stained for PD-L1 (red) using ab205921 at 1/200 dilution in ICC/IF, followed by CF568 Donkey anti-rabbit IgG(H+L) secondary antibody at 1/500 dilution.

Alexa Fluor® 488 (**ab209959**) and Alexa Fluor® 647 (**ab209960**) conjugated versions are available for this clone.

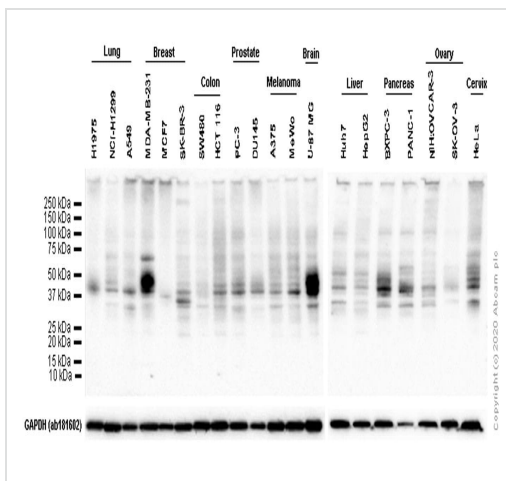


Immunohistochemistry (Frozen sections) - Anti-PD-L1 antibody [28-8] (ab205921)

IHC image of PD-L1 staining in a section of frozen normal human tonsil* performed on a Leica BOND™ system using the standard protocol. The section was fixed in 10% paraformaldehyde (10 min) prior to staining. The section was incubated with ab205921, 1ug/ml, for 15 mins at room temperature and detected using an HRP conjugated compact polymer system. DAB was used as the chromogen. The section was then counterstained with haematoxylin and mounted with DPX. The inset secondary-only control image is taken from an identical assay without primary antibody.

For other IHC staining systems (automated and non-automated) customers should optimize variable parameters such as antigen retrieval conditions, primary antibody concentration and antibody incubation times.

*Tissue obtained from the Human Research Tissue Bank, supported by the NIHR Cambridge Biomedical Research Centre



Western blot - Anti-PD-L1 antibody [28-8] (ab205921)

All lanes : Anti-PD-L1 antibody [28-8] (ab205921) at 1/100 dilution

Lane 1 : H1975 (Human non-small cell lung cancer epithelial cell) whole cell lysate

Lane 2 : NCI-H1299 (Human lung carcinoma epithelial cell) whole cell lysate

Lane 3 : A549 (Human lung carcinoma epithelial cell) whole cell lysate

Lane 4 : MDA-MB-231 (Human breast adenocarcinoma epithelial cell) whole cell lysate

Lane 5 : MCF7 (Human breast adenocarcinoma epithelial cell) whole cell lysate

Lane 6 : SK-BR-3 (Human breast adenocarcinoma epithelial cell) whole cell lysate

Lane 7 : SW480 (Human colorectal adenocarcinoma epithelial cell) whole cell lysate

Lane 8 : HCT 116 (Human colorectal carcinoma epithelial cell) whole cell lysate

Lane 9 : PC-3 (Human prostate adenocarcinoma epithelial cell) whole cell lysate

Lane 10 : DU 145 (Human prostate carcinoma epithelial cell) whole

cell lysate

Lane 11 : A375 (Human malignant melanoma epithelial cell) whole cell lysate

Lane 12 : MeWo (Human malignant melanoma fibroblast) whole cell lysate

Lane 13 : U-87 MG (Human glioblastoma-astrocytoma epithelial cell) whole cell lysate

Lane 14 : Huh7 (Human hepatocellular carcinoma epithelial cell) whole cell lysate

Lane 15 : HepG2 (Human hepatocellular carcinoma epithelial cell) whole cell lysate

Lane 16 : BXPC-3 (Human pancreas adenocarcinoma epithelial cell) whole cell lysate

Lane 17 : PANC-1 (Human pancreatic epithelioid carcinoma epithelial cell) whole cell lysate

Lane 18 : NIH:OVCA-3 (Human ovary adenocarcinoma epithelial cell) whole cell lysate

Lane 19 : SK-OV-3 (Human ovarian cancer epithelial cell) whole cell lysate

Lane 20 : HeLa (Human cervix adenocarcinoma epithelial cell) whole cell lysate

Lysates/proteins at 20 µg per lane.

Secondary

All lanes : Goat Anti-Rabbit IgG H&L (HRP) ([ab97051](#)) at 1/20000 dilution

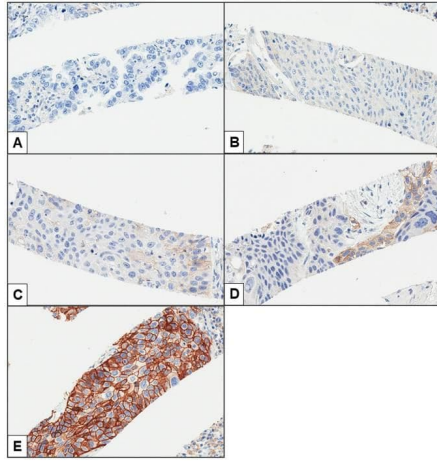
Predicted band size: 33 kDa

Observed band size: 40-60 kDa

Exposure time: 3 minutes

Blocking/Diluting buffer and concentration: 5% NFDm/TBST.

Expression of PD-L1 varied widely among the tumor cell lines.



Immunohistochemistry (Formalin/PFA-fixed paraffin-embedded sections) - Anti-PD-L1 antibody [28-8] (ab205921)

Nakamura et al PLoS One. 2017; 12(10): e0186192. Published online 2017 Oct 19. doi: 10.1371/journal.pone.0186192

Formalin-fixed, paraffin-embedded human lung cancer tissue stained for PD-L1 using ab205921.

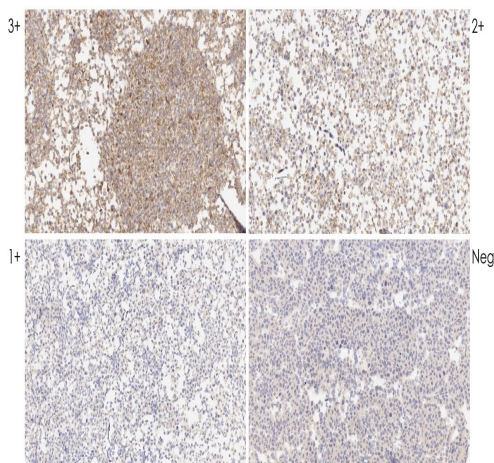
Representative images of PD-L1 expression.

(A) <1.0%, (B) 1.0–4.9%, (C) 5.0–9.9%, (D) 10.0–49.9%, and (E) ≥50.0% PD-L1-positive cells (magnification, 200×).

From image 3 of Nakamura et al.

Nakamura et al **PLoS One**. 2017; 12(10): e0186192. Published online 2017 Oct 19. doi: [10.1371/journal.pone.0186192](https://doi.org/10.1371/journal.pone.0186192)

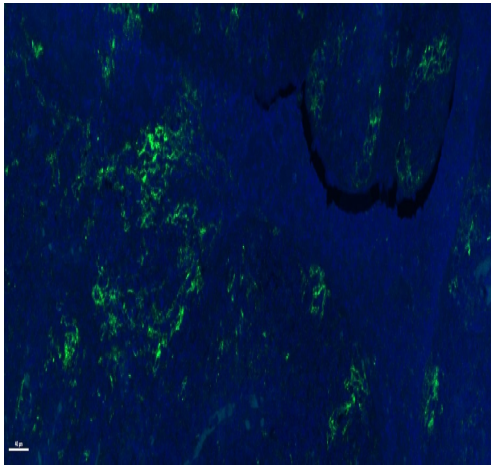
[Reproduced under **Creative Commons Attribution License**, which permits unrestricted use, distribution, and reproduction in any medium, provided the original author and source are credited.



Immunohistochemistry (Formalin/PFA-fixed paraffin-embedded sections) - Anti-PD-L1 antibody [28-8] (ab205921)

IHC image of ab205921 staining PD-L1 in PD-L1 Dynamic Range Analyte Control formalin fixed paraffin embedded cell lines (**HistoCyte Laboratories**), performed on a Leica BOND RX (Polymer Refine kit). The section was pre-treated using heat mediated antigen retrieval with EDTA buffer (pH9, epitope retrieval solution 2) for 30 mins at 98°C. The section was then incubated with ab205921, 5µg/ml working concentration, for 60 mins at room temperature and detected using an HRP conjugated compact polymer system for 8 minutes at room temperature. DAB was used as the chromogen for 10 minutes at room temperature. The section was then counterstained with hematoxylin, blued, dehydrated, cleared and mounted with DPX.

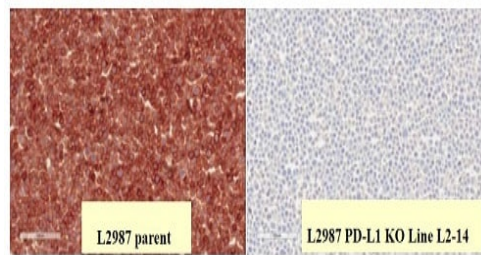
For other IHC staining systems (automated and non-automated) customers should optimize variable parameters such as antigen retrieval conditions, primary antibody concentration and antibody incubation times.



Immunohistochemistry (Formalin/PFA-fixed paraffin-embedded sections) - Anti-PD-L1 antibody [28-8] (ab205921)

Anti-PD-L1 antibody [28-8] (ab205921)

Immunohistochemistry (Formalin/PFA-fixed paraffin-embedded sections) analysis of human tonsil tissue labelling PD-L1 with ab205921 at a dilution of 1:400. Heat mediated antigen retrieval was performed using AR9 antigen retrieval solution, and microwave treatment for 15 min at 20% power. Anti-Rabbit/Mouse HRP polymer (PerkinElmer Opal Polymer HRP Ms Plus Rb) was used as secondary antibody. Opal tyramide amplification was performed using Opal 520 fluorophore. Counterstained with DAPI stain. Image scanned with Vectra 3.0 and analyzed via Phenochart software. This image was courteously provided by Dr. Houssein Abdul Sater, Georgia Cancer Center.



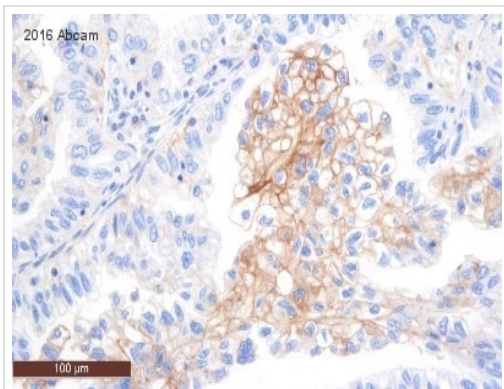
Immunohistochemistry (Formalin/PFA-fixed paraffin-embedded sections) - Anti-PD-L1 antibody [28-8] (ab205921)

Ab205921 specificity testing by Immunohistochemistry (KO testing): Loss of detection on KO Cells

Strong IHC detection with anti-PD-L1 (ab205921, clone 28-8) is seen in human lung adenocarcinoma tumor cell line L2987. PDL1 gene was edited in L2987 cells using TALEN constructs targeting exon4 of human PD-L1, transcript variant 1 (NM_014143.3) and complete knock out (K.O) confirmed by deep sequencing in clone L2-14. IHC detection is completely eliminated in the L2987 L2-14 K.O. cell line.

For recommended Immunohistochemistry (IHC) protocol, please refer to the protocol book in the protocol section and/or [here](#) ([downloadable copy](#)).

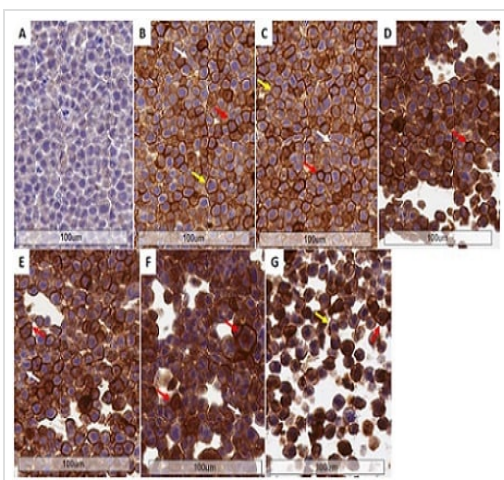
Perform heat mediated antigen retrieval before commencing with IHC staining protocol.



Immunohistochemistry (Formalin/PFA-fixed paraffin-embedded sections) - Anti-PD-L1 antibody [28-8] (ab205921)

Immunohistochemical staining of PD-L1 in formalin fixed, paraffin embedded human non-squamous non-small cell lung cancer (NSQ-NSCLC) using ab205921 at a dilution of 1/400, incubated for an hour at room temperature. Heat mediated antigen retrieval was carried out in low pH buffer and the sample was blocked with peroxidase blocking buffer for 3 minutes.

This image was courteously provided by Dr. Kai Schmitt from the Institute of Pathology, Saarbrücken-Rastpfuhl.



Immunohistochemistry (Formalin/PFA-fixed paraffin-embedded sections) - Anti-PD-L1 antibody [28-8] (ab205921)

Immunohistochemical analysis of CHO PD-L1 cells with ab205921 at 2 μg/ml.

High power view

- A) Rabbit IgG, 5 μg/mL. No staining
- B) Anti PD-L1, 2 μg/mL (ab205921 batches 1)
- C) Anti PD-L1, 2 μg/mL (ab205921 batches 3)
- D) Anti PD-L1, 2 μg/mL (ab205921 batches 4)
- E) Anti PD-L1, 2 μg/mL (ab205921 batches 5)
- F) Anti PD-L1, 2 μg/mL (ab205921 batches 6)
- G) Anti PD-L1, 2 μg/mL (ab205921 batches 7)

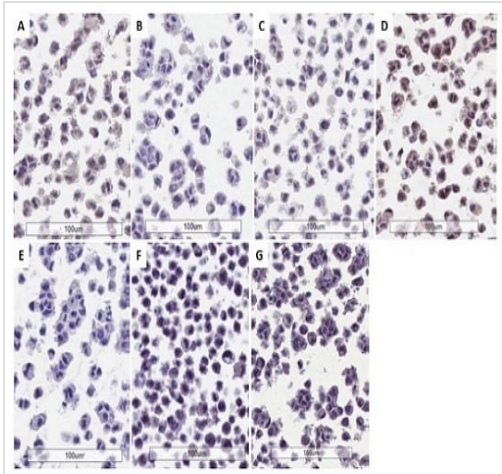
All batches/lots (1,3,4,5,6,7) showed consistent results.

Note strong, moderate, and weak (red, yellow, and white arrows respectively) plasma membrane staining of CHO PD-L1 transfected cells

For recommended Immunohistochemistry (IHC) protocol, please refer to the protocol book in the protocol section and/or [here \(downloadable copy\)](#).

Perform heat mediated antigen retrieval before commencing with

IHC staining protocol.



Immunohistochemistry (Formalin/PFA-fixed paraffin-embedded sections) - Anti-PD-L1 antibody [28-8] (ab205921)

Immunohistochemical analysis of CHO Parental cells with ab205921 at 2 µg/ml.

High power view

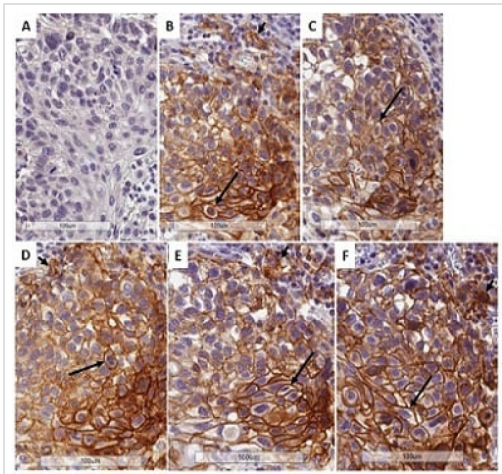
- A) Rabbit IgG, 5 µg/mL. No staining
- B) Anti PD-L1, 2 µg/mL (ab205921 batches 1)
- C) Anti PD-L1, 2 µg/mL (ab205921 batches 3)
- D) Anti PD-L1, 2 µg/mL (ab205921 batches 4)
- E) Anti PD-L1, 2 µg/mL (ab205921 batches 5)
- F) Anti PD-L1, 2 µg/mL (ab205921 batches 6)
- G) Anti PD-L1, 2 µg/mL (ab205921 batches 7)

All batches/lots (1,3,4,5,6,7) showed consistent results.

Note absence of PD-L1 expression in CHO parental cells.

For recommended Immunohistochemistry (IHC) protocol, please refer to the protocol book in the protocol section and/or [here \(downloadable copy\)](#).

Perform heat mediated antigen retrieval before commencing with IHC staining protocol.



Immunohistochemistry (Formalin/PFA-fixed paraffin-embedded sections) - Anti-PD-L1 antibody [28-8] (ab205921)

Immunohistochemical analysis of Human Lung NSCLC with ab205921 at 2 µg/ml.

High power view

- A) Rabbit IgG, 5 µg/mL. No staining
- B) Anti PD-L1, 2 µg/mL (ab205921 batches 1)
- C) Anti PD-L1, 2 µg/mL (ab205921 batches 3)
- D) Anti PD-L1, 2 µg/mL (ab205921 batches 4)
- E) Anti PD-L1, 2 µg/mL (ab205921 batches 5)
- F) Anti PD-L1, 2 µg/mL (ab205921 batches 6)

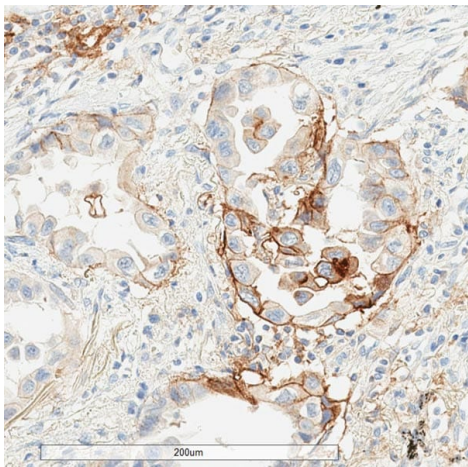
All batches/lots (1,3,4,5,6) showed consistent results.

Note linear and complete or partial (arrows) PD-L1 staining of tumor cells. Tumor associated immune cells localized over the tumor margin exhibit positive plasma membrane staining (small arrows).

For recommended Immunohistochemistry (IHC) protocol, please

refer to the protocol book in the protocol section and/or [here](#) ([downloadable copy](#)).

Perform heat mediated antigen retrieval before commencing with IHC staining protocol.

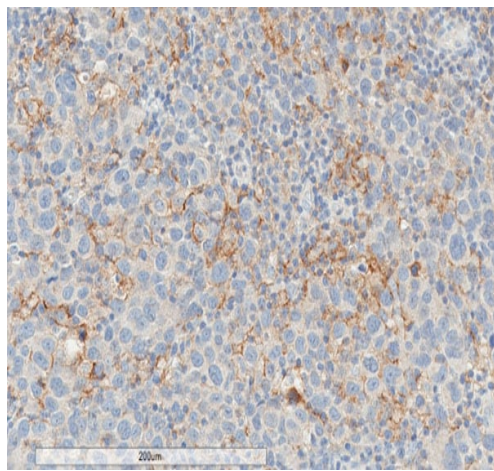


Immunohistochemistry (Formalin/PFA-fixed paraffin-embedded sections) - Anti-PD-L1 antibody [28-8] (ab205921)

Immunohistochemistry (Formalin/PFA-fixed paraffin-embedded sections) analysis of human non-small cell lung cancer tissue labelling PD-L1 with ab205921. Tumor cells and immuno cells localized within the stroma show PD-LA plasma membrane staining.

For antigen retrieval buffer, Universal HIER antigen retrieval reagent ([ab208572](#)) was used.

For IHC detection kit, Rabbit specific IHC polymer detection kit HRP/DAB ([ab209101](#)) is recommended.

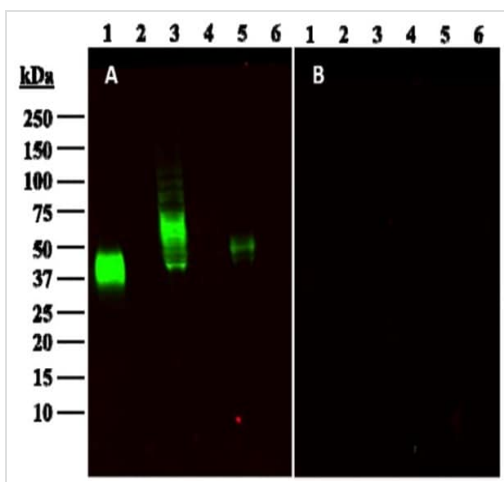


Immunohistochemistry (Formalin/PFA-fixed paraffin-embedded sections) - Anti-PD-L1 antibody [28-8] (ab205921)

Immunohistochemistry (Formalin/PFA-fixed paraffin-embedded sections) analysis of human melanoma tissue labelling PD-L1 with ab205921. Tumor cells show weak and partial positive PD-L1 expression in the plasma membrane. PD-L1 positive tumor associated immune cells are also stained.

For antigen retrieval buffer, Universal HIER antigen retrieval reagent ([ab208572](#)) was used.

For IHC detection kit, Rabbit specific IHC polymer detection kit HRP/DAB ([ab209101](#)) is recommended.

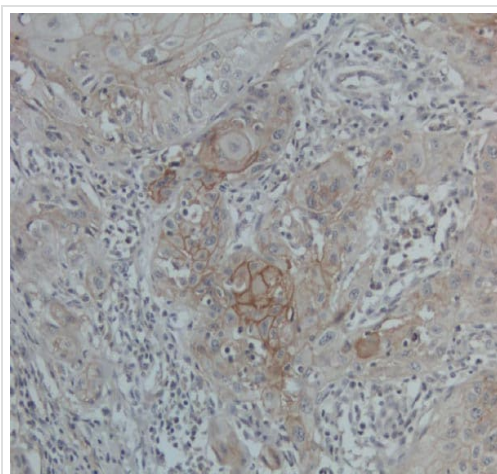


Western blot - Anti-PD-L1 antibody [28-8]
(ab205921)

(A and B) Western blots of recombinant PD-L1 protein (Lane 1), cell lysates of CHO-PD-L1 (Lane 3), CHO (Lane 4), ES-2 (Lane 5) and Colo205 (Lane 6) cell lines. In B, anti-PD-L1 (ab205921, clone 28-8) was pre-incubated with purified recombinant PDL1 protein overnight at 4°C.

Blank/no sample (Lane2). Lane 2 is blank on purpose.

For recommended Western Blot (WB) protocol, please refer to the protocol book in the protocol section and/or [here \(downloadable copy\)](#).

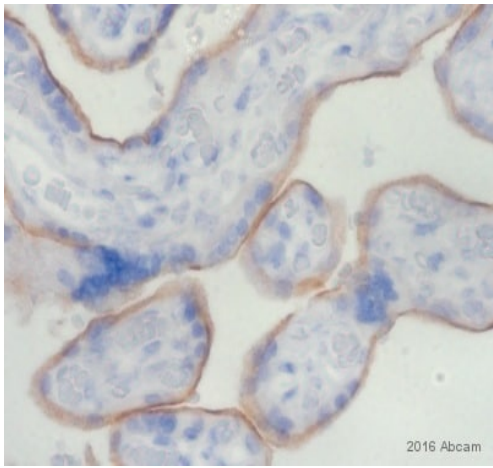


Immunohistochemistry (Formalin/PFA-fixed paraffin-embedded sections) - Anti-PD-L1 antibody [28-8]
(ab205921)

Immunohistochemical analysis of formalin-fixed, paraffin-embedded Human head and neck squamous cell carcinoma tissue labeling PD-L1 with ab205921 at 2 µg/ml. Counterstained with Hematoxylin.

For antigen retrieval buffer, Universal HIER antigen retrieval reagent ([ab208572](#)) was used.

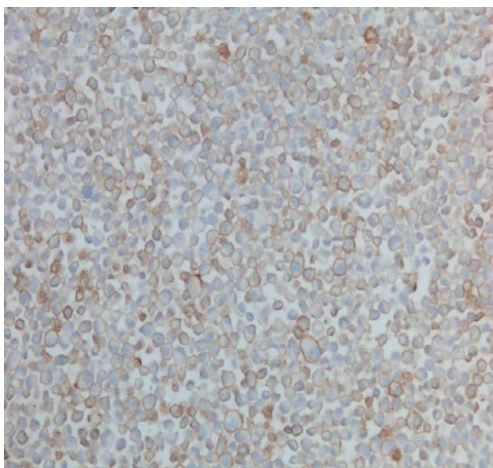
For IHC detection kit, Rabbit specific IHC polymer detection kit HRP/DAB ([ab209101](#)) is recommended.



Immunohistochemistry (Formalin/PFA-fixed paraffin-embedded sections) - Anti-PD-L1 antibody [28-8] (ab205921)

This image is courtesy of an Abreview submitted by Mr. Rudolf Jung.

Paraformaldehyde-fixed, paraffin-embedded human placenta tissue stained for PD-L1 using ab205921 at 1/100 dilution in immunohistochemical analysis.



Immunohistochemistry (Formalin/PFA-fixed paraffin-embedded sections) - Anti-PD-L1 antibody [28-8] (ab205921)

Immunohistochemical analysis of formalin-fixed, paraffin-embedded L2987 (Human lung adenocarcinoma cell line with endogenous PD-L1 expression) cells labeling PD-L1 with ab205921 at 2 µg/ml. Counterstained with Hematoxylin.

For antigen retrieval buffer, Universal HIER antigen retrieval reagent (**ab208572**) was used.

For IHC detection kit, Rabbit specific IHC polymer detection kit HRP/DAB (**ab209101**) is recommended.

Tissue Microarray (TMA) data for ab205921					
Normal tissue samples			Malignant tissue samples		
Human cardiac muscle	x	Human placenta	✓	Clear cell carcinoma of human kidney	x
Human cerebrum	x	Human skeletal muscle	x	Human bladder cancer	x
Human colon	x	Human skin	x	Human breast carcinoma	x
Human endometrium	x	Human spleen	x	Human cervical carcinoma	x
Human kidney	x	Human stomach	x	Human colon carcinoma	x
Human liver	x	Human testis	x	Human endometrial carcinoma	x
Human lung	x	Human thyroid	x	Human gastric adenocarcinoma	x
Human mammary gland	x	Human tonsil	✓	Human glioma	x
Human pancreas	x			Human hepatocellular carcinoma	x
				Human lung carcinoma	✓
				Human ovarian carcinoma	x
				Human pancreatic carcinoma	x
				Human prostatic hyperplasia	x
				Human thyroid carcinoma	x

Immunohistochemistry (Formalin/PFA-fixed paraffin-embedded sections) - Anti-PD-L1 antibody [28-8] (ab205921)

Tissue Microarrays stained for Anti-PD-L1 antibody [28-8] using ab205921 in immunohistochemical analysis. This table provides a detailed overview of positive (tick mark) and negative (cross mark) staining per sample type tested. The sections were pre-treated using Heat mediated antigen retrieval using **ab208572** (Universal HIER antigen retrieval reagent). The sections were incubated with ab205921 at +4°C overnight. For IHC detection kit, Rabbit specific IHC polymer detection kit HRP/DAB (**ab209101**) is recommended.

Why choose a recombinant antibody?



Research with confidence
Consistent and reproducible results



Long-term and scalable supply
Recombinant technology



Success from the first experiment
Confirmed specificity



Ethical standards compliant
Animal-free production

Anti-PD-L1 antibody [28-8] (ab205921)

Please note: All products are "FOR RESEARCH USE ONLY. NOT FOR USE IN DIAGNOSTIC PROCEDURES"

Our Abpromise to you: Quality guaranteed and expert technical support

- Replacement or refund for products not performing as stated on the datasheet
- Valid for 12 months from date of delivery
- Response to your inquiry within 24 hours
- We provide support in Chinese, English, French, German, Japanese and Spanish

- Extensive multi-media technical resources to help you
- We investigate all quality concerns to ensure our products perform to the highest standards

If the product does not perform as described on this datasheet, we will offer a refund or replacement. For full details of the Abpromise, please visit <https://www.abcam.cn/abpromise> or contact our technical team.

Terms and conditions

- Guarantee only valid for products bought direct from Abcam or one of our authorized distributors