


Anti-PCB antibody - C-terminal ab229267

[5 References](#) [4 图像](#)

概述

产品名称	Anti-PCB抗体- C-terminal
描述	兔多克隆抗体to PCB - C-terminal
宿主	Rabbit
经测试应用	适用于: IHC-P, WB, ICC/IF, IP
种属反应性	与反应: Rat, Human 预测可用于: Cow, Pig, Rhesus monkey 
免疫原	Recombinant fragment within Human PCB (C terminal). The exact sequence is proprietary. Database link: P11498
阳性对照	WB: HEK-293T, A431, HeLa and HepG2 whole cell extracts. IP: HeLa whole cell extract. IHC-P: Rat duodenum tissue. ICC/IF: HeLa cells.
常规说明	<p>The Life Science industry has been in the grips of a reproducibility crisis for a number of years. Abcam is leading the way in addressing this with our range of recombinant monoclonal antibodies and knockout edited cell lines for gold-standard validation. Please check that this product meets your needs before purchasing.</p> <p>If you have any questions, special requirements or concerns, please send us an inquiry and/or contact our Support team ahead of purchase. Recommended alternatives for this product can be found below, along with publications, customer reviews and Q&As</p>

性能

形式	Liquid
存放说明	Shipped at 4°C. Store at +4°C short term (1-2 weeks). Upon delivery aliquot. Store at -20°C long term. Avoid freeze / thaw cycle.
存储溶液	pH: 7.00 Preservative: 0.025% Proclin 300 Constituents: 79% PBS, 20% Glycerol (glycerin, glycerine)
纯度	Immunogen affinity purified
克隆	多克隆
同种型	IgG

应用

The Abpromise guarantee **Abpromise™**承诺保证使用ab229267于以下的经测试应用

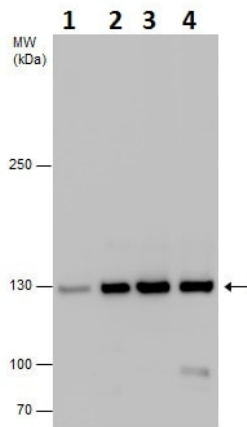
“应用说明”部分 下显示的仅为推荐的起始稀释度;实际最佳的稀释度/浓度应由使用者检定。

应用	Ab评论	说明
IHC-P		1/100 - 1/1000.
WB		1/500 - 1/3000. Predicted molecular weight: 130 kDa.
ICC/IF		1/100 - 1/1000.
IP		1/100 - 1/857.

靶标

功能	Pyruvate carboxylase catalyzes a 2-step reaction, involving the ATP-dependent carboxylation of the covalently attached biotin in the first step and the transfer of the carboxyl group to pyruvate in the second. Catalyzes in a tissue specific manner, the initial reactions of glucose (liver, kidney) and lipid (adipose tissue, liver, brain) synthesis from pyruvate.
通路	Carbohydrate biosynthesis; gluconeogenesis.
疾病相关	Defects in PC are the cause of pyruvate carboxylase deficiency (PC deficiency) [MIM:266150]. PC deficiency leads to lactic acidosis, mental retardation and death. It occurs in three forms: mild or type A, severe neonatal or type B, and a very mild lacticacidemia.
序列相似性	Contains 1 ATP-grasp domain. Contains 1 biotin carboxylation domain. Contains 1 biotinyl-binding domain. Contains 1 carboxyltransferase domain.
细胞定位	Mitochondrion matrix.

图片



Western blot - Anti-PCB antibody - C-terminal (ab229267)

All lanes : Anti-PCB antibody - C-terminal (ab229267) at 1/1000 dilution

Lane 1 : HEK-293T (human epithelial cell line from embryonic kidney transformed with large T antigen) whole cell extract

Lane 2 : A431 (human epidermoid carcinoma cell line) whole cell extract

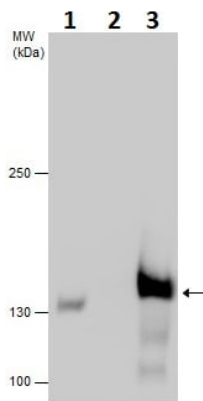
Lane 3 : HeLa (human epithelial cell line from cervix adenocarcinoma) whole cell extract

Lane 4 : HepG2 (human liver hepatocellular carcinoma cell line) whole cell extract

Lysates/proteins at 30 µg per lane.

Predicted band size: 130 kDa

5% SDS-PAGE gel.



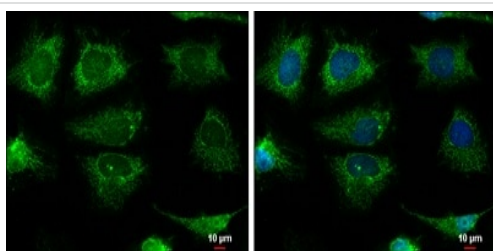
Immunoprecipitation - Anti-PCB antibody - C-terminal (ab229267)

PCB was immunoprecipitated from HeLa (human epithelial cell line from cervix adenocarcinoma) whole cell extract with 5µg ab229267. Western blot was performed from the immunoprecipitate using ab229267. Anti-rabbit IgG was used as secondary antibody.

Lane 1: HeLa whole cell extract.

Lane 2: Control IgG instead of ab229267 in HeLa whole cell extract.

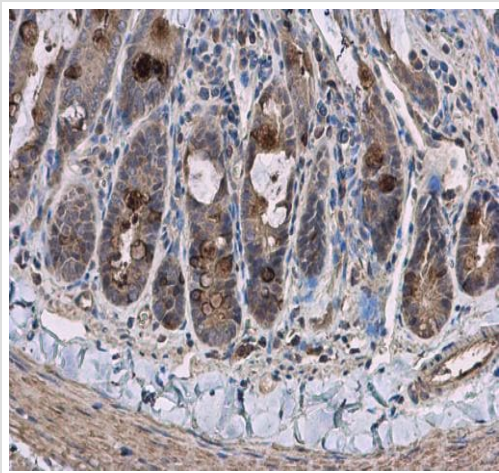
Lane 3: ab229267 IP in HeLa whole cell extract.



Immunocytochemistry/ Immunofluorescence - Anti-PCB antibody - C-terminal (ab229267)

2% paraformaldehyde-fixed HeLa (human epithelial cell line from cervix adenocarcinoma) cells stained for PCB (green) using ab229267 at 1/500 dilution in ICC/IF.

Blue: Hoechst 33342 staining.



Paraffin-embedded rat duodenum tissue stained for PCB using ab229267 at 1/500 dilution in immunohistochemical analysis.

Immunohistochemistry (Formalin/PFA-fixed paraffin-embedded sections) - Anti-PCB antibody - C-terminal (ab229267)

Please note: All products are "FOR RESEARCH USE ONLY. NOT FOR USE IN DIAGNOSTIC PROCEDURES"

Our Abpromise to you: Quality guaranteed and expert technical support

- Replacement or refund for products not performing as stated on the datasheet
- Valid for 12 months from date of delivery
- Response to your inquiry within 24 hours
- We provide support in Chinese, English, French, German, Japanese and Spanish
- Extensive multi-media technical resources to help you
- We investigate all quality concerns to ensure our products perform to the highest standards

If the product does not perform as described on this datasheet, we will offer a refund or replacement. For full details of the Abpromise, please visit <https://www.abcam.cn/abpromise> or contact our technical team.

Terms and conditions

- Guarantee only valid for products bought direct from Abcam or one of our authorized distributors