


Anti-PCB antibody ab115579

3 References **2 图像**

概述

产品名称	Anti-PCB抗体
描述	山羊多克隆抗体to PCB
宿主	Goat
经测试应用	适用于: WB, IHC-P
种属反应性	与反应: Mouse, Human 预测可用于: Rat, Cow, Dog, Pig 
免疫原	Synthetic peptide: KFKEVKKAYVEANQ with a Cysteine residue linker, corresponding to internal sequence amino acids 886-899 of Human PCB (NP_000911.2).

 [Run BLAST with](#)

 [Run BLAST with](#)

常规说明

The Life Science industry has been in the grips of a reproducibility crisis for a number of years. Abcam is leading the way in addressing this with our range of recombinant monoclonal antibodies and knockout edited cell lines for gold-standard validation. Please check that this product meets your needs before purchasing.

If you have any questions, special requirements or concerns, please send us an inquiry and/or contact our Support team ahead of purchase. Recommended alternatives for this product can be found below, along with publications, customer reviews and Q&As

性能

形式	Liquid
存放说明	Shipped at 4°C. Store at +4°C short term (1-2 weeks). Upon delivery aliquot. Store at -20°C long term.
存储溶液	pH: 7.30 Preservative: 0.02% Sodium azide Constituents: 99% Tris buffered saline, 0.5% BSA
纯度	Protein G purified
克隆	多克隆
同种型	IgG

应用

The Abpromise guarantee

Abpromise™承诺保证使用ab115579于以下的经测试应用

“应用说明”部分 下显示的仅为推荐的起始稀释度;实际最佳的稀释度/浓度应由使用者检定。

应用	Ab评论	说明
WB		Use a concentration of 0.03 - 1 µg/ml. Predicted molecular weight: 130 kDa.
IHC-P		Use a concentration of 5 µg/ml. Perform heat mediated antigen retrieval with citrate buffer pH 6 before commencing with IHC staining protocol.

靶标

功能

Pyruvate carboxylase catalyzes a 2-step reaction, involving the ATP-dependent carboxylation of the covalently attached biotin in the first step and the transfer of the carboxyl group to pyruvate in the second. Catalyzes in a tissue specific manner, the initial reactions of glucose (liver, kidney) and lipid (adipose tissue, liver, brain) synthesis from pyruvate.

通路

Carbohydrate biosynthesis; gluconeogenesis.

疾病相关

Defects in PC are the cause of pyruvate carboxylase deficiency (PC deficiency) [MIM:266150]. PC deficiency leads to lactic acidosis, mental retardation and death. It occurs in three forms: mild or type A, severe neonatal or type B, and a very mild lacticacidemia.

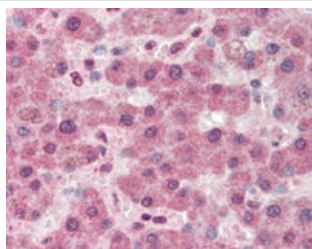
序列相似性

Contains 1 ATP-grasp domain.
Contains 1 biotin carboxylation domain.
Contains 1 biotinyl-binding domain.
Contains 1 carboxyltransferase domain.

细胞定位

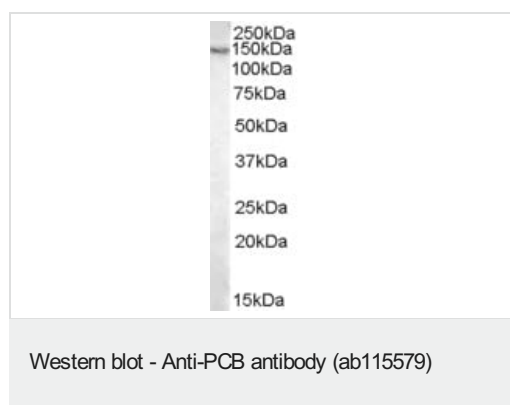
Mitochondrion matrix.

图片



ab115579, at 5µg/ml, staining PCB in Formalin-fixed, Paraffin-embedded Human Liver tissue by Immunohistochemistry followed by biotinylated secondary antibody, alkaline phosphatase-streptavidin and chromogen.

Immunohistochemistry (Formalin/PFA-fixed paraffin-embedded sections) - Anti-PCB antibody (ab115579)



Anti-PCB antibody (ab115579) at 0.03 µg/ml + Mouse Liver lysate
in RIPA buffer at 35 µg

Developed using the ECL technique.

Predicted band size: 130 kDa

Please note: All products are "FOR RESEARCH USE ONLY. NOT FOR USE IN DIAGNOSTIC PROCEDURES"

Our Abpromise to you: Quality guaranteed and expert technical support

- Replacement or refund for products not performing as stated on the datasheet
- Valid for 12 months from date of delivery
- Response to your inquiry within 24 hours
- We provide support in Chinese, English, French, German, Japanese and Spanish
- Extensive multi-media technical resources to help you
- We investigate all quality concerns to ensure our products perform to the highest standards

If the product does not perform as described on this datasheet, we will offer a refund or replacement. For full details of the Abpromise, please visit <https://www.abcam.cn/abpromise> or contact our technical team.

Terms and conditions

- Guarantee only valid for products bought direct from Abcam or one of our authorized distributors