

Anti-PBRM1/BAF180 antibody [BL-39-2C3] ab243876

重组

7 图像

概述

产品名称	Anti-PBRM1/BAF180抗体[BL-39-2C3]
描述	兔单克隆抗体[BL-39-2C3] to PBRM1/BAF180
宿主	Rabbit
经测试应用	适用于: WB, IHC-P, ICC, IP
种属反应性	与反应: Mouse, Human
免疫原	Recombinant fragment corresponding to Human PBRM1/BAF180 aa 1-300. Database link: <a href="#">Q86U86</a>
阳性对照	WB: HeLa, HEK293T, MCF-7, Hep-G2, A-549, SW620, SK-MEL-28, and Jurkat
常规说明	This product is sold under License from Bethyl Laboratories, Inc.

性能

形式	Liquid
存放说明	Shipped at 4°C. Store at +4°C short term (1-2 weeks). Upon delivery aliquot. Store at -20°C long term. Avoid freeze / thaw cycle.
存储溶液	pH: 7.8 Preservative: 0.09% Sodium azide Constituents: 98% Borate buffered saline, 0.1% BSA
纯化说明	Recombinant antibody was purified from cell culture supernatant.
克隆	单克隆
克隆编号	BL-39-2C3
同种型	IgG

应用

**The Abpromise guarantee**      **Abpromise™**承诺保证使用ab243876于以下的经测试应用

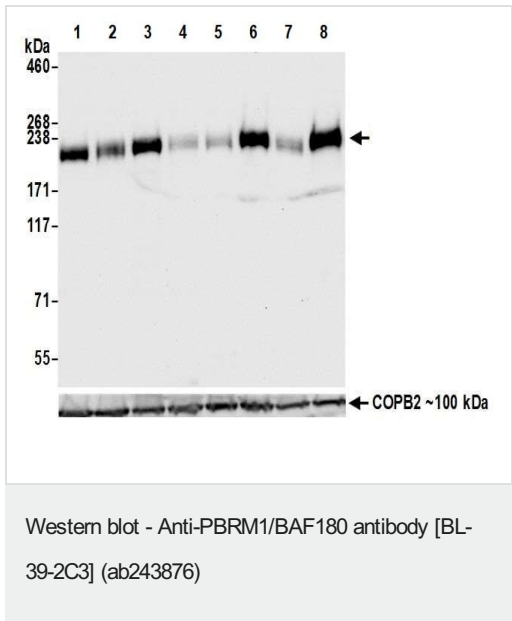
“应用说明”部分 下显示的仅为推荐的起始稀释度;实际最佳的稀释度/浓度应由使用者检定。

应用	Ab评论	说明
WB		1/1000.
IHC-P		1/100 - 1/500. Perform heat mediated antigen retrieval with citrate buffer pH 6 before commencing with IHC staining protocol.
ICC		1/100 - 1/500.
IP		Use at an assay dependent concentration. Use 20µl/mg lysate.

## 靶标

功能	Involved in transcriptional activation and repression of select genes by chromatin remodeling (alteration of DNA-nucleosome topology). Act as a negative regulator of cell proliferation.
组织特异性	Widely expressed.
疾病相关	Defects in PBRM1 are a cause of renal cell carcinoma (RCC) [MIM:144700]. It is a heterogeneous group of sporadic or hereditary carcinoma derived from cells of the proximal renal tubular epithelium. It is subclassified into clear cell renal carcinoma (non-papillary carcinoma), papillary renal cell carcinoma, chromophobe renal cell carcinoma, collecting duct carcinoma with medullary carcinoma of the kidney, and unclassified renal cell carcinoma.
序列相似性	Contains 2 BAH domains. Contains 6 bromo domains. Contains 1 HMG box DNA-binding domain.
翻译后修饰	Phosphorylated upon DNA damage, probably by ATM or ATR.
细胞定位	Nucleus.

## 图片



**All lanes :** Anti-PBRM1/BAF180 antibody [BL-39-2C3] (ab243876) at 1/1000 dilution

- Lane 1 :** HeLa (Human epithelial cell line from cervix adenocarcinoma) whole cell lysate
- Lane 2 :** HEK-293T (Human epithelial cell line from embryonic kidney transformed with large T antigen) whole cell lysate
- Lane 3 :** MCF7 (Human breast adenocarcinoma cell line) whole cell lysate
- Lane 4 :** HepG2 (Human liver hepatocellular carcinoma cell line) whole cell lysate
- Lane 5 :** A549 (Human lung carcinoma cell line) whole cell lysate
- Lane 6 :** SW620
- Lane 7 :** SK-MEL-28
- Lane 8 :** Jurkat (Human T cell leukemia cell line from peripheral

blood) whole cell lysate

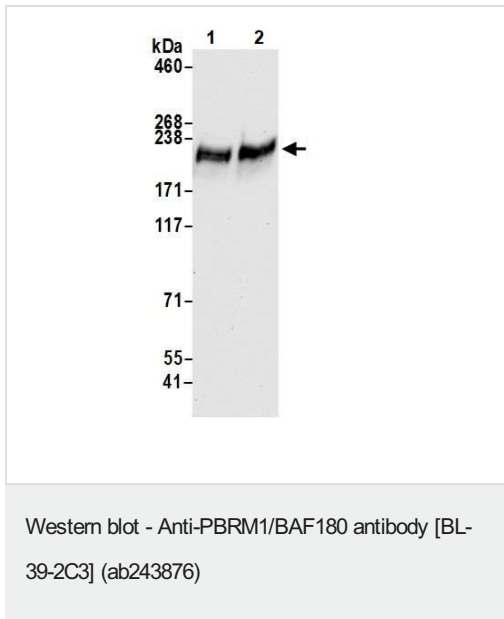
Lysates/proteins at 50 µg per lane.

### Secondary

**All lanes** : HRP-conjugated goat anti-rabbit IgG

**Exposure time:** 10 seconds

Detection: Chemiluminescence



**All lanes** : Anti-PBRM1/BAF180 antibody [BL-39-2C3] (ab243876) at 1/1000 dilution

**Lane 1** : Ba/F3 whole cell lysate

**Lane 2** : CH-27 (Mouse lymphoma)

Lysates/proteins at 50 µg per lane.

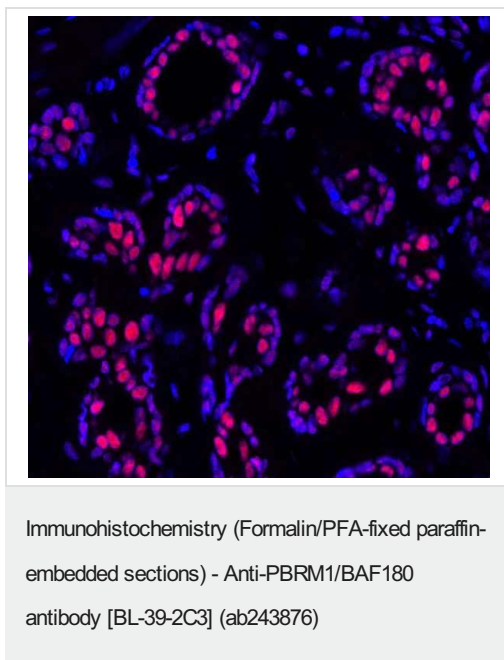
### Secondary

**All lanes** : HRP-conjugated goat anti-rabbit IgG

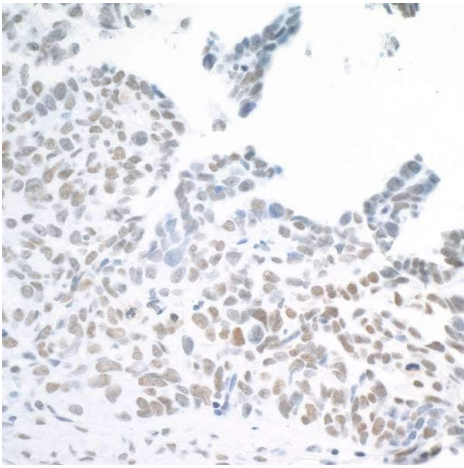
**Exposure time:** 10 seconds

Detection: Chemiluminescence

Cells prepared using NETN lysis buffer

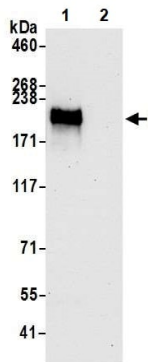


Formalin-fixed, paraffin-embedded human Breast tissue stained for PBRM1/BAF180 using ab243876 in immunohistochemical analysis. A HRP-conjugated goat anti-rabbit IgG was used as the secondary. Opal™ staining and DAPI counterstain.



Immunohistochemistry (Formalin/PFA-fixed paraffin-embedded sections) - Anti-PBRM1/BAF180 antibody [BL-39-2C3] (ab243876)

Formalin-fixed, paraffin-embedded human ovarian carcinoma stained for PBRM1/BAF180 using ab243876 in immunohistochemical analysis. A HRP-conjugated goat anti-rabbit IgG was used as the secondary. DAB staining.



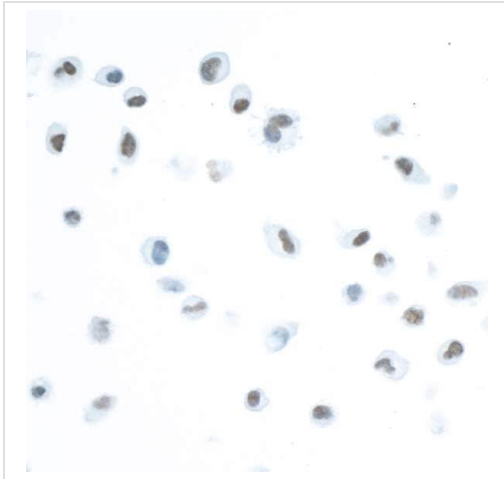
Immunoprecipitation - Anti-PBRM1/BAF180 antibody [BL-39-2C3] (ab243876)

PBRM1/BAF180 was immunoprecipitated from 1 mg HEK-293T whole cell lysate with ab243876 at 20  $\mu$ l per reaction. Western blot was performed on the immunoprecipitate using ab243876 at 1/1000 dilution. Lysates prepared using NETN lysis buffer.

Detection: Chemiluminescence

Lane 1: ab243876 IP in HEK-293T whole cell lysate.

Lane 2: Control IgG in HEK-293T whole cell lysate.



Immunocytochemistry - Anti-PBRM1/BAF180 antibody [BL-39-2C3] (ab243876)

Formaldehyde-fixed HeLa (Human epithelial cell line from cervix adenocarcinoma) cells labeling PBRM1/BAF180 using ab243876 in ICC analysis. A HRP-conjugated goat anti-rabbit IgG was used as the secondary antibody. DAB staining

#### Why choose a recombinant antibody?



**Research with confidence**  
Consistent and reproducible results



**Long-term and scalable supply**  
Recombinant technology



**Success from the first experiment**  
Confirmed specificity



**Ethical standards compliant**  
Animal-free production

Anti-PBRM1/BAF180 antibody [BL-39-2C3] (ab243876)

**Please note:** All products are "FOR RESEARCH USE ONLY. NOT FOR USE IN DIAGNOSTIC PROCEDURES"

#### Our Abpromise to you: Quality guaranteed and expert technical support

- Replacement or refund for products not performing as stated on the datasheet
- Valid for 12 months from date of delivery
- Response to your inquiry within 24 hours
- We provide support in Chinese, English, French, German, Japanese and Spanish
- Extensive multi-media technical resources to help you
- We investigate all quality concerns to ensure our products perform to the highest standards

If the product does not perform as described on this datasheet, we will offer a refund or replacement. For full details of the Abpromise, please visit <https://www.abcam.cn/abpromise> or contact our technical team.

## Terms and conditions

---

- Guarantee only valid for products bought direct from Abcam or one of our authorized distributors