

Anti-PBK/SPK antibody [EP2520Y] ab75987

敲除验证 重组 RabMAb

8 References 4 图像

概述

产品名称	Anti-PBK/SPK抗体[EP2520Y]
描述	兔单克隆抗体[EP2520Y] to PBK/SPK
宿主	Rabbit
经测试应用	适用于: WB, IP, IHC-P 不适用于: Flow Cyt or ICC/IF
种属反应性	与反应: Human
免疫原	Synthetic peptide within Human PBK/SPK (C terminal). The exact sequence is proprietary.
阳性对照	WB: HEK-293T, HeLa and HAP1 cell lysates. IHC-P: Human tonsil tissue
常规说明	This product is a recombinant monoclonal antibody, which offers several advantages including: - High batch-to-batch consistency and reproducibility - Improved sensitivity and specificity - Long-term security of supply - Animal-free production For more information see here . Our RabMAb [®] technology is a patented hybridoma-based technology for making rabbit monoclonal antibodies. For details on our patents, please refer to RabMAb[®] patents . Mouse, Rat: We have preliminary internal testing data to indicate this antibody may not react with these species. Please contact us for more information.

性能

形式	Liquid
存放说明	Shipped at 4°C. Store at -20°C. Stable for 12 months at -20°C.
存储溶液	pH: 7.20 Preservative: 0.05% Sodium azide Constituents: 0.1% BSA, 40% Glycerol (glycerin, glycerine), 9.85% Tris glycine, 50% Tissue culture supernatant
纯度	Protein A purified
克隆	单克隆

克隆编号 EP2520Y

同种型 IgG

应用

The Abpromise guarantee **Abpromise™** 承诺保证使用ab75987于以下的经测试应用

“应用说明”部分 下显示的仅为推荐的起始稀释度;实际最佳的稀释度/浓度应由使用者检定。

应用	Ab评论	说明
WB		1/100000 - 1/500000. Detects a band of approximately 36 kDa (predicted molecular weight: 36 kDa).
IP		1/30.
IHC-P		1/100 - 1/250. Perform heat mediated antigen retrieval with citrate buffer pH 6 before commencing with IHC staining protocol. Antigen retrieval is recommended.

应用说明 Is unsuitable for Flow Cyt or ICC/IF.

靶标

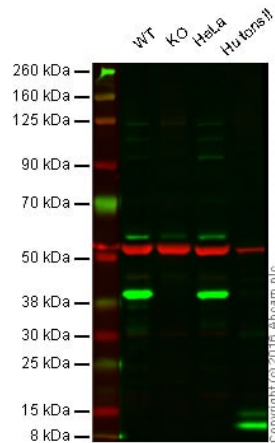
功能 Phosphorylates MAP kinase p38. Seems to be active only in mitosis. May also play a role in the activation of lymphoid cells. When phosphorylated, forms a complex with TP53, leading to TP53 destabilization and attenuation of G2/M checkpoint during doxorubicin-induced DNA damage.

组织特异性 Expressed in the testis and placenta. In the testis, restrictedly expressed in outer cell layer of seminiferous tubules.

序列相似性 Belongs to the protein kinase superfamily. Ser/Thr protein kinase family. MAP kinase kinase subfamily.
Contains 1 protein kinase domain.

翻译后修饰 Phosphorylated; in a cell-cycle dependent manner at mitosis.

图片



Western blot - Anti-PBK/SPK antibody [EP2520Y] (ab75987)

Lane 1: Wild-type HAP1 cell lysate (20 µg)

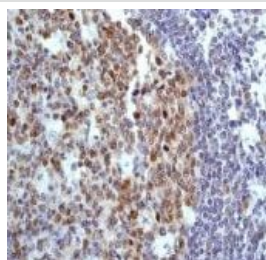
Lane 2: PBK knockout HAP1 cell lysate (20 µg)

Lane 3: HeLa cell lysate (20 µg)

Lane 4: Human tonsil tissue lysate (20 µg)

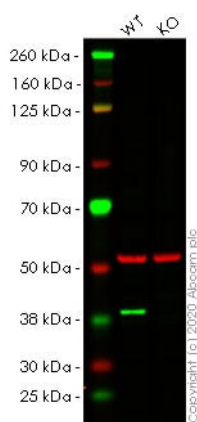
Lanes 1 - 4: Merged signal (red and green). Green - ab75987 observed at 40 kDa. Red - loading control, **ab7291**, observed at 52 kDa.

ab75987 was shown to recognize PBK when PBK knockout samples were used, along with additional cross-reactive bands. Wild-type and PBK knockout samples were subjected to SDS-PAGE. ab75987 diluted to 1/100,000 and **ab7291** (loading control to alpha Tubulin) diluted to 1/10,000 and incubated overnight at 4°C. Blots were developed with Goat anti-Rabbit IgG H&L (IRDye® 800CW) preadsorbed (**ab216773**) and Goat anti-Mouse IgG H&L (IRDye® 680RD) preadsorbed (**ab216776**) secondary antibodies at 1/10,000 dilution for 1 hour at room temperature before imaging.



Immunohistochemistry (Formalin/PFA-fixed paraffin-embedded sections) - Anti-PBK/SPK antibody [EP2520Y] (ab75987)

Immunohistochemical analysis of paraffin-embedded human tonsil using ab75987 at 1/100 dilution. Antigen retrieval was heat mediated with citrate buffer pH 6 before commencing with IHC staining protocol.



Western blot - Anti-PBK/SPK antibody [EP2520Y] (ab75987)

All lanes : Anti-PBK/SPK antibody [EP2520Y] (ab75987) at 1/100000 dilution

Lane 1 : Wild-type HEK-293T cell lysate

Lane 2 : PBK knockout HEK-293T cell lysate

Lysates/proteins at 20 µg per lane.

Performed under reducing conditions.

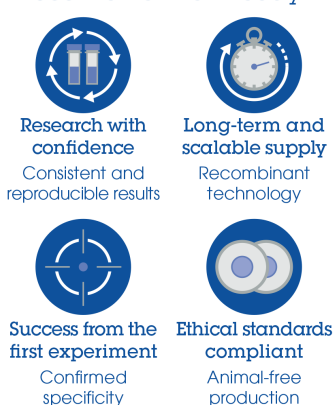
Predicted band size: 36 kDa

Observed band size: 40 kDa

Lanes 1- 2: Merged signal (red and green). Green - ab75987 observed at 40 kDa. Red - Anti-alpha Tubulin antibody [DM1A] - Loading Control (**ab7291**) observed at 50 kDa.

ab75987 was shown to react with PBK/SPK in wild-type HEK-293T cells in western blot. Loss of signal was observed when knockout cell line **ab266827** (knockout cell lysate **ab257575**) was used. Wild-type HEK-293T and PBK knockout HEK-293T cell lysates were subjected to SDS-PAGE. ab75987 and Anti-alpha Tubulin antibody [DM1A] - Loading Control (**ab7291**) overnight at 4°C at a 1 in 100000 dilution and a 1 in 20000 dilution respectively. Blots were developed with Goat anti-Rabbit IgG H&L (IRDye®800CW) preadsorbed (**ab216773**) and Goat anti-Mouse IgG H&L (IRDye®680RD) preadsorbed (**ab216776**) secondary antibodies at 1 in 20000 dilution for 1 hour at room temperature before imaging.

Why choose a recombinant antibody?



- Research with confidence**
Consistent and reproducible results
- Long-term and scalable supply**
Recombinant technology
- Success from the first experiment**
Confirmed specificity
- Ethical standards compliant**
Animal-free production

Anti-PBK/SPK antibody [EP2520Y] (ab75987)

Please note: All products are "FOR RESEARCH USE ONLY. NOT FOR USE IN DIAGNOSTIC PROCEDURES"

Our Abpromise to you: Quality guaranteed and expert technical support

- Replacement or refund for products not performing as stated on the datasheet
- Valid for 12 months from date of delivery
- Response to your inquiry within 24 hours
- We provide support in Chinese, English, French, German, Japanese and Spanish
- Extensive multi-media technical resources to help you
- We investigate all quality concerns to ensure our products perform to the highest standards

If the product does not perform as described on this datasheet, we will offer a refund or replacement. For full details of the Abpromise, please visit <https://www.abcam.cn/abpromise> or contact our technical team.

Terms and conditions

- Guarantee only valid for products bought direct from Abcam or one of our authorized distributors