


Anti-Paxillin antibody [Y113] ab32084

敲除验证 重组 RabMAb

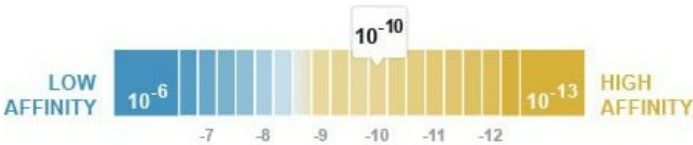
★★★★★ 21 Abreviews 180 References 9 图像

概述

产品名称	Anti-Paxillin抗体[Y113]
描述	兔单克隆抗体[Y113] to Paxillin
宿主	Rabbit
特异性	This antibody recognises Paxillin alpha, beta and gamma isoforms.
经测试应用	适用于: WB, ICC/IF, Flow Cyt (Intra), IP, IHC-P
种属反应性	与反应: Mouse, Human 预测可用于: Dog 
免疫原	Synthetic peptide. This information is proprietary to Abcam and/or its suppliers.
阳性对照	Flow Cyt (intra): HeLa cells. ICC/IF: HeLa cells IP: HeLa whole cell lysate WB: HeLa, RAW 264.7 and mouse heart lysate. IHC-P: Human cerebrum tissue and human breast carcinoma tissue.
常规说明	<p>This product is a recombinant monoclonal antibody, which offers several advantages including:</p> <ul style="list-style-type: none"><li>- High batch-to-batch consistency and reproducibility</li><li>- Improved sensitivity and specificity</li><li>- Long-term security of supply</li><li>- Animal-free production</li></ul> <p>For more information <a href="#">see here</a>.</p> <p>Our RabMAb<sup>®</sup> technology is a patented hybridoma-based technology for making rabbit monoclonal antibodies. For details on our patents, please refer to <a href="#">RabMAb<sup>®</sup> patents</a>.</p>

性能

形式	Liquid
存放说明	Shipped at 4°C. Store at +4°C short term (1-2 weeks). Upon delivery aliquot. Store at -20°C long term. Avoid freeze / thaw cycle.
解离常数 (K <sub>D</sub> )	K <sub>D</sub> = 4.17 x 10 <sup>-10</sup> M



[Learn more about Kp](#)

存储溶液	pH: 7.20 Preservative: 0.01% Sodium azide Constituents: 59% PBS, 40% Glycerol (glycerin, glycerine), 0.05% BSA
纯度	Protein A purified
克隆	单克隆
克隆编号	Y113
同种型	IgG

应用

**The Abpromise guarantee**      **Abpromise™** 承诺保证使用ab32084于以下的经测试应用

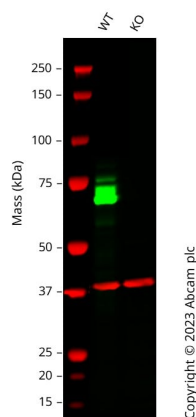
“应用说明”部分 下显示的仅为推荐的起始稀释度;实际最佳的稀释度/浓度应由使用者检定。

应用	Ab评论	说明
WB	★★★★★ (10)	1/1000. Predicted molecular weight: 68 kDa. <b>For unpurified use at 1/5000 - 1/10000.</b>
ICC/IF	★★★★★ (7)	1/50. <b>For unpurified use at 1/250.</b>
Flow Cyt (Intra)		1/100.
IP	★★★★★ (1)	1/20.
IHC-P	★★★★★ (1)	1/1200. Perform heat mediated antigen retrieval with citrate buffer pH 6 before commencing with IHC staining protocol.

靶标

功能	Cytoskeletal protein involved in actin-membrane attachment at sites of cell adhesion to the extracellular matrix (focal adhesion).
序列相似性	Belongs to the paxillin family. Contains 4 LIM zinc-binding domains.
翻译后修饰	Phosphorylated on tyrosine residues during integrin-mediated cell adhesion, embryonic development, fibroblast transformation and following stimulation of cells by mitogens.
细胞定位	Cytoplasm > cytoskeleton. Cell junction > focal adhesion.

图片



Western blot - Anti-Paxillin antibody [Y113] (ab32084)

**All lanes** : Anti-Paxillin antibody [Y113] (ab32084) at 1/1000 dilution

**Lane 1** : Wild-type A431 cell lysate

**Lane 2** : PXN knockout A431 cell lysate

Lysates/proteins at 20 µg per lane.

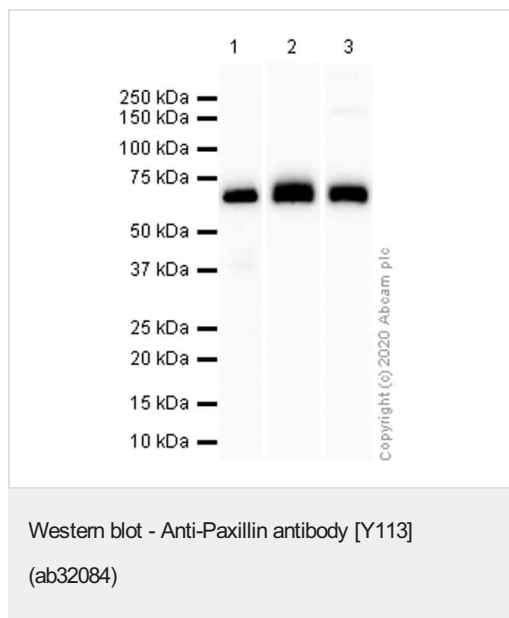
Developed using the ECL technique.

Performed under reducing conditions.

**Predicted band size:** 68 kDa

**Observed band size:** 70 kDa

Anti-PXN antibody [Y113] (ab32084) staining at 1/1000 dilution, shown in green; Mouse anti-GAPDH antibody [6C5] ([ab8245](#)) loading control staining at 1/20000 dilution, shown in red. In Western blot, ab32084 was shown to bind specifically to PXN. A band was observed at 70 kDa in wild-type A431 cell lysates with no signal observed at this size in PXN knockout cell line [ab261892](#) (knockout cell lysate [ab261701](#)). To generate this image, wild-type and PXN knockout A431 cell lysates were analysed. First, samples were run on an SDS-PAGE gel then transferred onto a nitrocellulose membrane. Membranes were blocked in 3 % milk in TBS-0.1 % Tween<sup>®</sup> 20 (TBS-T) before incubation with primary antibodies overnight at 4 °C. Blots were washed four times in TBS-T, incubated with secondary antibodies for 1 h at room temperature, washed again four times then imaged. Secondary antibodies used were Goat anti-Rabbit IgG H&L 800CW and Goat anti-Mouse IgG H&L 680RD at 1/20000 dilution



**All lanes :** Anti-Paxillin antibody [Y113] (ab32084) at 1/1000 dilution (Purified)

**Lane 1 :** HeLa (Human cervix adenocarcinoma epithelial cell) whole cell lysate

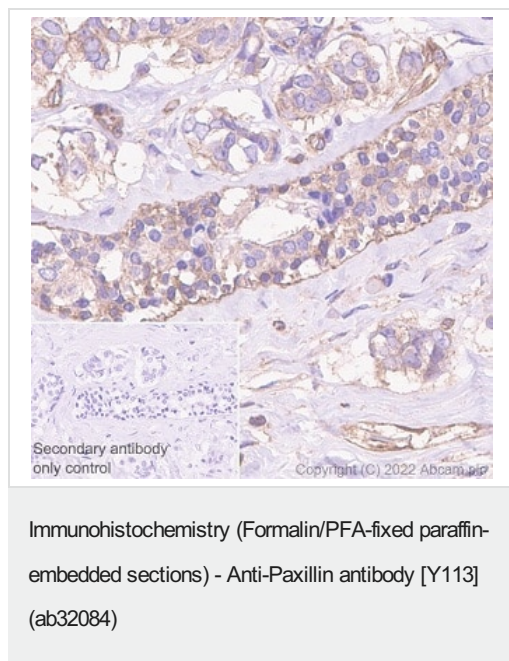
**Lane 2 :** RAW 264.7 (Mouse Abelson murine leukemia virus-induced tumor macrophage) whole cell lysate

**Lane 3 :** Mouse heart lysate

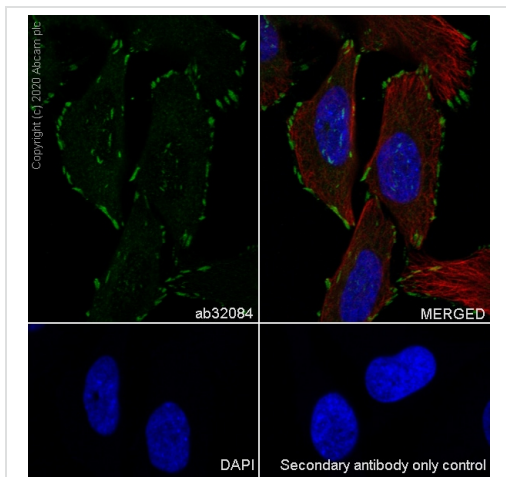
#### Secondary

**All lanes :** Goat Anti-Rabbit IgG H&L (HRP) ([ab97051](#)) at 1/20000 dilution

**Predicted band size:** 68 kDa

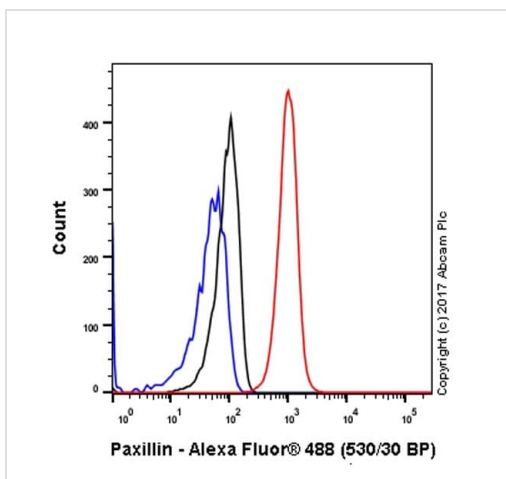


Immunohistochemistry analysis of paraffin-embedded human breast carcinoma tissue sections labelling Paxillin with ab32084 at 1/1200 dilution. The section was incubated with ab32084 for 30 mins at room temperature. Rabbit specific IHC polymer detection kit HRP/DAB ([ab209101](#)) was used as the secondary antibody. Sections were counterstained with Hematoxylin. Antigen retrieval was heat mediated antigen retrieval with Citrate buffer (pH 6.0, epitope retrieval solution 1) for 20 mins. Positive staining on human breast carcinoma tissue. The immunostaining was performed on a Leica Biosystems BOND® RX instrument.



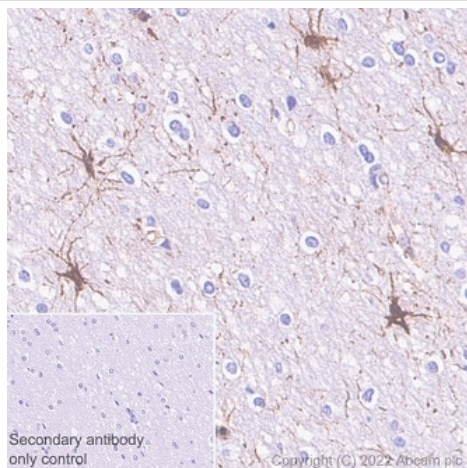
Immunocytochemistry/ Immunofluorescence - Anti-Paxillin antibody [Y113] (ab32084)

Immunocytochemistry analysis of HeLa (Human cervix adenocarcinoma epithelial cell) cells labeling Paxillin with purified ab32084 at 1/50 dilution (2.88 µg/mL). Cells were fixed in 4% Paraformaldehyde and permeabilized with 0.1% tritonX-100. Cells were counterstained with Ab195889 Anti-alpha Tubulin antibody [DM1A] - Microtubule Marker (Alexa Fluor® 594) 1/200 (2.5 µg/mL). Goat anti rabbit IgG (Alexa Fluor® 488, **ab150077**) was used as the secondary antibody at 1/1000 (2 µg/mL) dilution. DAPI (blue) was used as nuclear counterstain. PBS instead of the primary antibody was used as the secondary antibody only control.



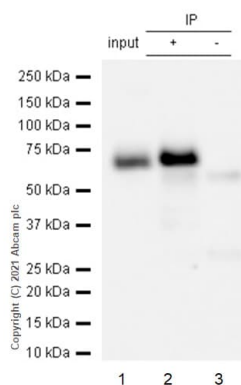
Flow Cytometry (Intracellular) - Anti-Paxillin antibody [Y113] (ab32084)

Intracellular Flow Cytometry analysis of HeLa (human cervix adenocarcinoma) cells labeling with purified ab32084 at 1/100 dilution (10 µg/ml) (Red). Cells were fixed with 4% paraformaldehyde and permeabilized with 90% methanol. A Goat anti rabbit IgG (Alexa Fluor® 488) (**ab150077**) (1/2000 dilution) was used as the secondary antibody. Rabbit monoclonal IgG (Black) (**ab172730**) was used as an isotype control. Cell without incubation with primary antibody and secondary antibody (Blue) were used as unlabeled control.



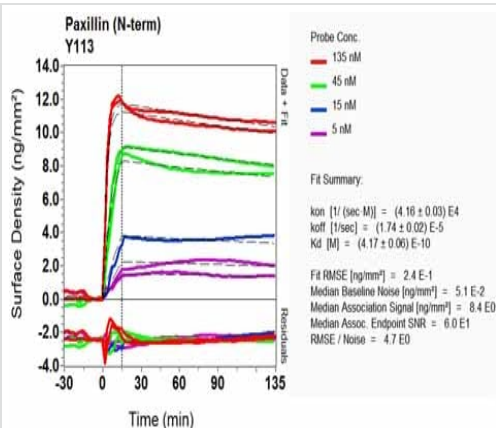
Immunohistochemistry (Formalin/PFA-fixed paraffin-embedded sections) - Anti-Paxillin antibody [Y113] (ab32084)

Immunohistochemistry analysis of paraffin-embedded human cerebrum tissue sections labelling Paxillin with ab32084 at 1/1200 dilution. The section was incubated with ab32084 for 30 mins at room temperature. Rabbit specific IHC polymer detection kit HRP/DAB (**ab209101**) was used as the secondary antibody. Sections were counterstained with Hematoxylin. Antigen retrieval was heat mediated antigen retrieval with Citrate buffer (pH 6.0, epitope retrieval solution 1) for 20 mins. Positive staining on human cerebrum tissue. The immunostaining was performed on a Leica Biosystems BOND® RX instrument.



Immunoprecipitation - Anti-Paxillin antibody [Y113] (ab32084)

Purified ab32084 at 1/20 dilution (0.7 µg) immunoprecipitating Paxillin in HeLa whole cell lysate.  
 Lane 1 (input): HeLa (Human cervix adenocarcinoma epithelial cell) whole cell lysate 10 µg.  
 Lane 2 (+): ab32084 + HeLa whole cell lysate.  
 Lane 3 (-): Rabbit monoclonal IgG (**ab172730**) instead of ab32084 in HeLa whole cell lysate.  
 VeriBlot for IP Detection Reagent (HRP) (**ab131366**) (1/1000 dilution) was used for Western blotting.  
 Blocking Buffer and concentration: 5% NFDm/TBST.  
 Diluting buffer and concentration: 5% NFDm/TBST.  
 Observed band size: 48 kDa



OxLD Scanning - Anti-Paxillin antibody [Y113] (ab32084)

Equilibrium dissociation constant ( $K_D$ )  
 Learn more about  $K_D$

[Click here to learn more about  \$K\_D\$](#)

### Why choose a recombinant antibody?



**Research with confidence**  
Consistent and reproducible results



**Long-term and scalable supply**  
Recombinant technology



**Success from the first experiment**  
Confirmed specificity



**Ethical standards compliant**  
Animal-free production

Anti-Paxillin antibody [Y113] (ab32084)

**Please note:** All products are "FOR RESEARCH USE ONLY. NOT FOR USE IN DIAGNOSTIC PROCEDURES"

### Our Abpromise to you: Quality guaranteed and expert technical support

---

- Replacement or refund for products not performing as stated on the datasheet
- Valid for 12 months from date of delivery
- Response to your inquiry within 24 hours
- We provide support in Chinese, English, French, German, Japanese and Spanish
- Extensive multi-media technical resources to help you
- We investigate all quality concerns to ensure our products perform to the highest standards

If the product does not perform as described on this datasheet, we will offer a refund or replacement. For full details of the Abpromise, please visit <https://www.abcam.cn/abpromise> or contact our technical team.

### Terms and conditions

---

- Guarantee only valid for products bought direct from Abcam or one of our authorized distributors