

Anti-PARP4 antibody [P193-10] ab24110

[3 References](#) [1 图像](#)

概述

产品名称	Anti-PARP4抗体[P193-10]
描述	小鼠单克隆抗体[P193-10] to PARP4
宿主	Mouse
经测试应用	适用于: IHC-P, IHC-FoFr
种属反应性	与反应: Human
免疫原	Synthetic peptide, corresponding to amino acids 408-611 of Human PARP4.
阳性对照	IHC-P: FFPE human kidney tissue sections.
常规说明	<p>The Life Science industry has been in the grips of a reproducibility crisis for a number of years. Abcam is leading the way in addressing this with our range of recombinant monoclonal antibodies and knockout edited cell lines for gold-standard validation. Please check that this product meets your needs before purchasing.</p> <p>If you have any questions, special requirements or concerns, please send us an inquiry and/or contact our Support team ahead of purchase. Recommended alternatives for this product can be found below, along with publications, customer reviews and Q&As</p>

性能

形式	Liquid
存放说明	Shipped at 4°C. Store at +4°C short term (1-2 weeks). Upon delivery aliquot. Store at -20°C long term.
存储溶液	pH: 7.3 Preservative: 0.1% Sodium azide Constituent: 1% BSA
克隆	单克隆
克隆编号	P193-10
同种型	IgG2b
轻链类型	kappa

应用

The Abpromise guarantee**Abpromise™**承诺保证使用ab241110于以下的经测试应用

“应用说明”部分 下显示的仅为推荐的起始稀释度;实际最佳的稀释度/浓度应由使用者检定。

应用	Ab评论	说明
IHC-P		
IHC-FoFr		

应用说明

Flow Cyt: Use at an assay dependent dilution.
 IHC-F: 1/10 - 1/20.
 IHC-Fr: 1/10 - 1/20.
 IHC-P: Use at an assay dependent dilution.
 WB: Use at an assay dependent dilution. preferably with ECL
 Predicted molecular weight: 193 kDa.

Not tested in other applications.
 Optimal dilutions/concentrations should be determined by the end user.

靶标**组织特异性**

Widely expressed; the highest levels are in the kidney; also detected in heart, placenta, lung, liver, skeletal muscle, spleen, leukocytes and pancreas.

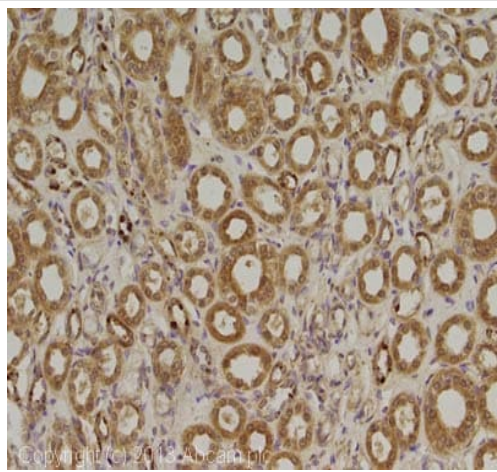
序列相似性

Contains 1 BRCT domain.
 Contains 1 PARP alpha-helical domain.
 Contains 1 PARP catalytic domain.
 Contains 1 VIT domain.
 Contains 1 VWFA domain.

细胞定位

Cytoplasm. Nucleus. Cytoplasm, cytoskeleton, spindle. Also found in the nucleus, associated with mitotic spindles.

图片



Immunohistochemistry (Formalin/PFA-fixed paraffin-embedded sections) - Anti-PARP4 antibody [P193-10] (ab24110)

IHC image of PARP4 staining in human kidney formalin fixed paraffin embedded tissue section, performed on a Leica Bond system using the standard protocol F. The section was pre-treated using heat mediated antigen retrieval with sodium citrate buffer (pH6, epitope retrieval solution 1) for 20 mins. The section was then incubated with ab24110, 10µg/ml, for 15 mins at room temperature and detected using an HRP conjugated compact polymer system. DAB was used as the chromogen. The section was then counterstained with haematoxylin and mounted with DPX.

For other IHC staining systems (automated and non-automated) customers should optimize variable parameters such as antigen retrieval conditions, primary antibody concentration and antibody incubation times.

Please note: All products are "FOR RESEARCH USE ONLY. NOT FOR USE IN DIAGNOSTIC PROCEDURES"

Our Abpromise to you: Quality guaranteed and expert technical support

- Replacement or refund for products not performing as stated on the datasheet
- Valid for 12 months from date of delivery
- Response to your inquiry within 24 hours
- We provide support in Chinese, English, French, German, Japanese and Spanish
- Extensive multi-media technical resources to help you
- We investigate all quality concerns to ensure our products perform to the highest standards

If the product does not perform as described on this datasheet, we will offer a refund or replacement. For full details of the Abpromise, please visit <https://www.abcam.cn/abpromise> or contact our technical team.

Terms and conditions

- Guarantee only valid for products bought direct from Abcam or one of our authorized distributors