

Product datasheet

Anti-PAP antibody [EPR4066] ab108984

重组 RabMAb

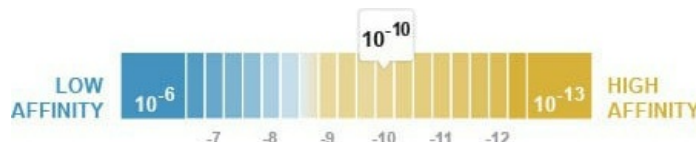
★★★★☆ [1 Abreviews](#) [3 References](#) [14 图像](#)

概述

产品名称	Anti-PAP抗体[EPR4066]
描述	兔单克隆抗体[EPR4066] to PAP
宿主	Rabbit
经测试应用	适用于: WB, IP, IHC-P 不适用于: Flow Cyt
种属反应性	与反应: Human
免疫原	Synthetic peptide. This information is proprietary to Abcam and/or its suppliers.
阳性对照	WB: Prostate cancer cell lysate. IHC: human prostatic and human prostatic adenocarcinoma tissues. IP: human prostate lysate.
常规说明	<p>This product is a recombinant monoclonal antibody, which offers several advantages including:</p> <ul style="list-style-type: none"> - High batch-to-batch consistency and reproducibility - Improved sensitivity and specificity - Long-term security of supply - Animal-free production <p>For more information see here.</p> <p>Our RabMAb[®] technology is a patented hybridoma-based technology for making rabbit monoclonal antibodies. For details on our patents, please refer to RabMAb[®] patents.</p> <p>Mouse, Rat: We have preliminary internal testing data to indicate this antibody may not react with these species. Please contact us for more information.</p>

性能

形式	Liquid
存放说明	Shipped at 4°C. Store at -20°C. Stable for 12 months at -20°C.
解离常数 (K_D)	K _D = 1.41 x 10 ⁻¹⁰ M



[Learn more about K_D](#)

存储溶液	pH: 7.20 Preservative: 0.05% Sodium azide Constituents: 0.1% BSA, 40% Glycerol (glycerin, glycerine), 9.85% Tris glycine, 50% Tissue culture supernatant
纯度	Protein A purified
克隆	单克隆
克隆编号	EPR4066
同种型	IgG

应用

The Abpromise guarantee **Abpromise™** 承诺保证使用 ab108984 于以下的经测试应用

“应用说明”部分 下显示的仅为推荐的起始稀释度;实际最佳的稀释度/浓度应由使用者检定。

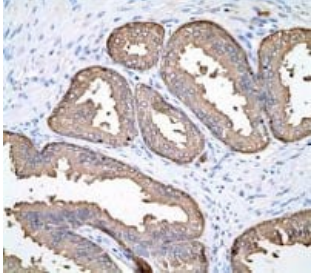
应用	Ab评论	说明
WB		1/1000 - 1/10000. Predicted molecular weight: 45 kDa.
IP		1/10 - 1/100.
IHC-P	★★★★★ (1)	1/250 - 1/500. Perform heat mediated antigen retrieval with citrate buffer pH 6 before commencing with IHC staining protocol. Antigen retrieval is recommended.

应用说明 Is unsuitable for Flow Cyt.

靶标

序列相似性	Belongs to the histidine acid phosphatase family.
细胞定位	Secreted and Lysosome membrane. Predominantly localized in the plasma membrane but also detected in intracellular vesicles.

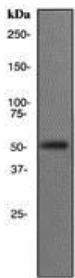
图片



Immunohistochemistry (Formalin/PFA-fixed paraffin-embedded sections) - Anti-PAP antibody [EPR4066] (ab108984)

Immunohistochemical staining of paraffin-embedded human prostatic tissue using anti-PAP (ab108984).

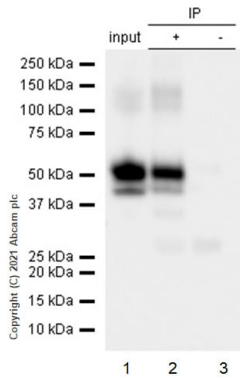
Perform heat mediated antigen retrieval with citrate buffer pH 6 before commencing with IHC staining protocol.



Western blot - Anti-PAP antibody [EPR4066] (ab108984)

Anti-PAP antibody [EPR4066] (ab108984) at 1/1000 dilution + Prostate cancer cell lysate at 10 µg

Predicted band size: 45 kDa



Immunoprecipitation - Anti-PAP antibody [EPR4066] (ab108984)

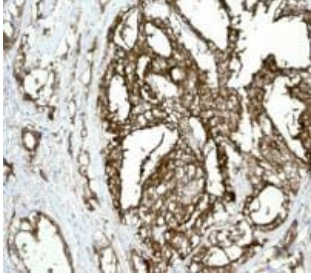
PAP was immunoprecipitated from 0.35 mg Human prostate whole cell lysate 10 µg with 108984 at 1/50 dilution (2µg). VeriBlot for IP Detection Reagent (HRP)([ab131366](#)) was used at 1/5000 dilution.

Lane 1: Human prostate whole cell lysate 10 µg

Lane 2: ab108984 IP in Human prostate whole cell lysate

Lane 3: Rabbit monoclonal IgG ([ab172730](#)) instead of ab108984 in Human prostate whole cell lysate

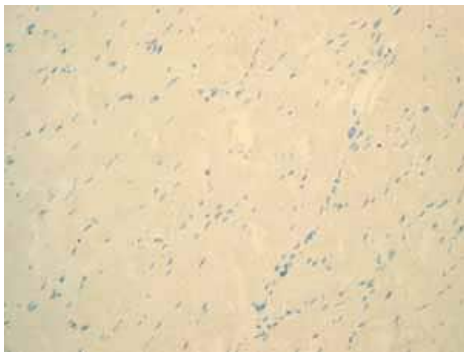
Blocking and dilution buffer and concentration: 5% NFDm/TBST.



Immunohistochemistry (Formalin/PFA-fixed paraffin-embedded sections) - Anti-PAP antibody [EPR4066] (ab108984)

Immunohistochemical staining of paraffin-embedded human prostatic adenocarcinoma tissue using anti-PAP (ab108984).

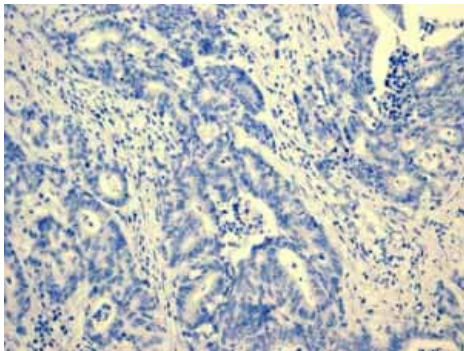
Perform heat mediated antigen retrieval with citrate buffer pH 6 before commencing with IHC staining protocol.



Immunohistochemistry (Formalin/PFA-fixed paraffin-embedded sections) - Anti-PAP antibody [EPR4066] (ab108984)

ab108984 showing negative staining in Skeletal muscle tissue.

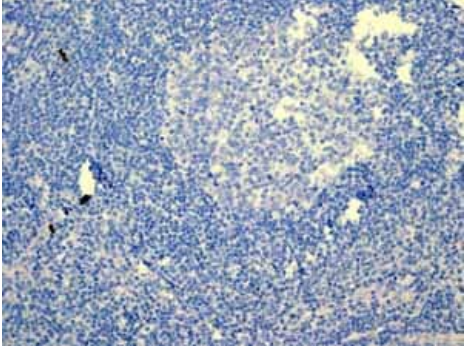
Perform heat mediated antigen retrieval with citrate buffer pH 6 before commencing with IHC staining protocol.



Immunohistochemistry (Formalin/PFA-fixed paraffin-embedded sections) - Anti-PAP antibody [EPR4066] (ab108984)

ab108984 showing negative staining in Colonic adenocarcinoma tissue.

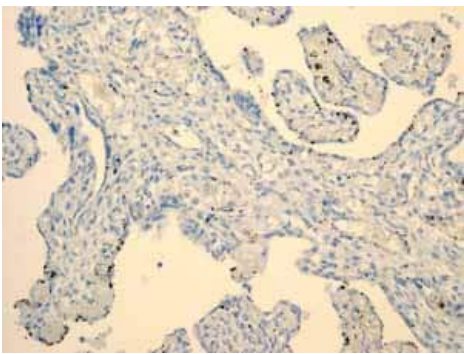
Perform heat mediated antigen retrieval with citrate buffer pH 6 before commencing with IHC staining protocol.



Immunohistochemistry (Formalin/PFA-fixed paraffin-embedded sections) - Anti-PAP antibody [EPR4066] (ab108984)

ab108984 showing negative staining in Normal tonsil tissue.

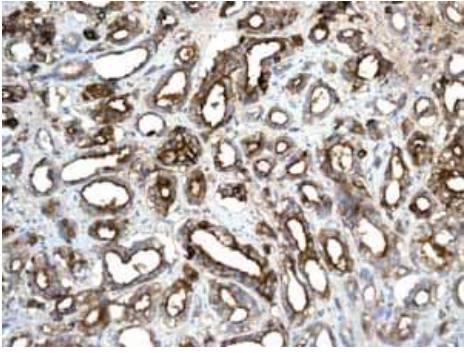
Perform heat mediated antigen retrieval with citrate buffer pH 6 before commencing with IHC staining protocol.



Immunohistochemistry (Formalin/PFA-fixed paraffin-embedded sections) - Anti-PAP antibody [EPR4066] (ab108984)

ab108984 showing negative staining in Normal placenta tissue.

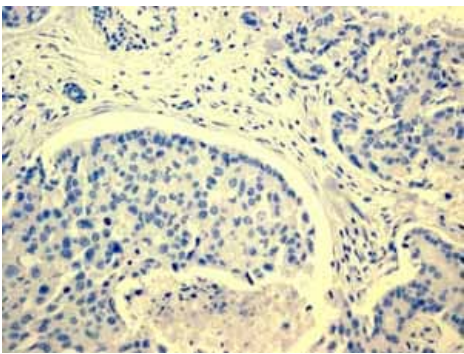
Perform heat mediated antigen retrieval with citrate buffer pH 6 before commencing with IHC staining protocol.



Immunohistochemistry (Formalin/PFA-fixed paraffin-embedded sections) - Anti-PAP antibody [EPR4066] (ab108984)

ab108984 showing positive staining in Prostatic carcinoma tissue.

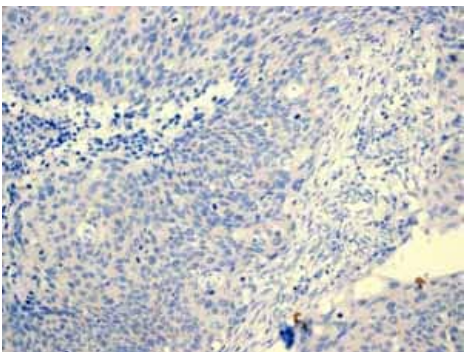
Perform heat mediated antigen retrieval with citrate buffer pH 6 before commencing with IHC staining protocol.



Immunohistochemistry (Formalin/PFA-fixed paraffin-embedded sections) - Anti-PAP antibody [EPR4066] (ab108984)

ab108984 showing negative staining in Breast carcinoma tissue.

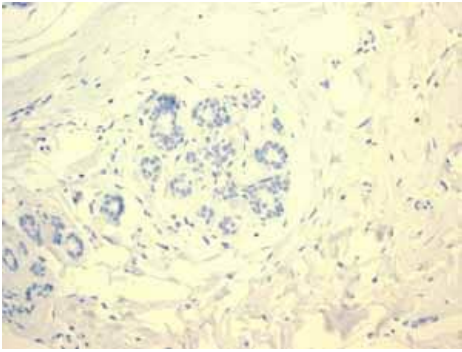
Perform heat mediated antigen retrieval with citrate buffer pH 6 before commencing with IHC staining protocol.



Immunohistochemistry (Formalin/PFA-fixed paraffin-embedded sections) - Anti-PAP antibody [EPR4066] (ab108984)

ab108984 showing negative staining in Cervical carcinoma tissue.

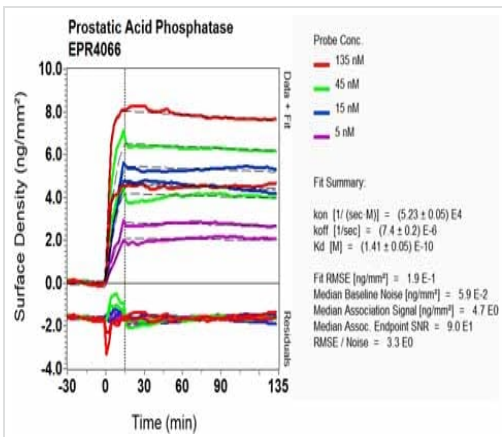
Perform heat mediated antigen retrieval with citrate buffer pH 6 before commencing with IHC staining protocol.



Immunohistochemistry (Formalin/PFA-fixed paraffin-embedded sections) - Anti-PAP antibody [EPR4066] (ab108984)

ab108984 showing negative staining in Normal breast tissue.

Perform heat mediated antigen retrieval with citrate buffer pH 6 before commencing with IHC staining protocol.







Ox-LD Scanning - Anti-PAP antibody [EPR4066] (ab108984)

Equilibrium dissociation constant (K_D)

Learn more about K_D

[Click here to learn more about \$K_D\$](#)

Why choose a recombinant antibody?

 <p>Research with confidence Consistent and reproducible results</p>	 <p>Long-term and scalable supply Recombinant technology</p>
 <p>Success from the first experiment Confirmed specificity</p>	 <p>Ethical standards compliant Animal-free production</p>

Anti-PAP antibody [EPR4066] (ab108984)

Please note: All products are "FOR RESEARCH USE ONLY. NOT FOR USE IN DIAGNOSTIC PROCEDURES"

Our Abpromise to you: Quality guaranteed and expert technical support

- Replacement or refund for products not performing as stated on the datasheet
- Valid for 12 months from date of delivery
- Response to your inquiry within 24 hours
- We provide support in Chinese, English, French, German, Japanese and Spanish
- Extensive multi-media technical resources to help you
- We investigate all quality concerns to ensure our products perform to the highest standards

If the product does not perform as described on this datasheet, we will offer a refund or replacement. For full details of the Abpromise, please visit <https://www.abcam.cn/abpromise> or contact our technical team.

Terms and conditions

- Guarantee only valid for products bought direct from Abcam or one of our authorized distributors