

# Anti-Pannexin 1 antibody ab139715

[7 References](#) [2 图像](#)

### 概述

<b>产品名称</b>	Anti-Pannexin 1抗体
<b>描述</b>	兔多克隆抗体to Pannexin 1
<b>宿主</b>	Rabbit
<b>特异性</b>	Two transcript variants encoding different isoforms have been found for this gene.
<b>经测试应用</b>	<b>适用于:</b> WB, ICC/IF
<b>种属反应性</b>	<b>与反应:</b> Human
<b>免疫原</b>	Synthetic peptide corresponding to 17 amino acid residues near the amino terminus of Human Pannexin 1 (NP_056183).
<b>阳性对照</b>	Human ovary tissue lysate.
<b>常规说明</b>	<p>The Life Science industry has been in the grips of a reproducibility crisis for a number of years. Abcam is leading the way in addressing this with our range of recombinant monoclonal antibodies and knockout edited cell lines for gold-standard validation. Please check that this product meets your needs before purchasing.</p> <p>If you have any questions, special requirements or concerns, please send us an inquiry and/or contact our Support team ahead of purchase. Recommended alternatives for this product can be found below, along with publications, customer reviews and Q&amp;As</p>

### 性能

<b>形式</b>	Liquid
<b>存放说明</b>	Shipped at 4°C. Store at +4°C short term (1-2 weeks). Upon delivery aliquot. Store at -20°C long term.
<b>存储溶液</b>	pH: 7.2 Preservative: 0.02% Sodium azide Constituent: 99% PBS
<b>纯度</b>	Immunogen affinity purified
<b>克隆</b>	多克隆
<b>同种型</b>	IgG

### 应用

## The Abpromise guarantee

**Abpromise™** 承诺保证使用 ab139715 于以下的经测试应用

“应用说明”部分下显示的仅为推荐的起始稀释度；实际最佳的稀释度/浓度应由使用者检定。

应用	Ab评论	说明
WB		Use a concentration of 1 - 2 µg/ml. Predicted molecular weight: 48 kDa.
ICC/IF		Use a concentration of 20 µg/ml.

## 靶标

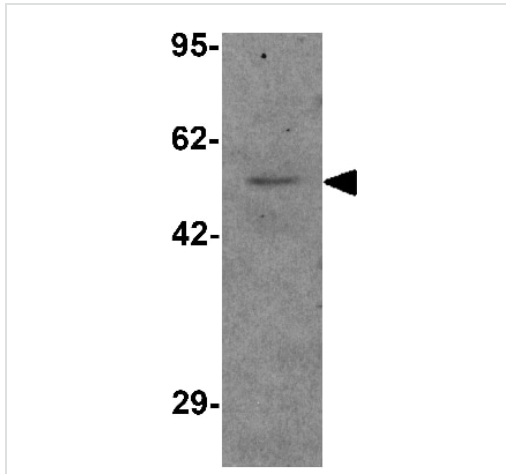
<b>功能</b>	Structural component of the gap junctions and the hemichannels. May play a role as a Ca(2+)-leak channel to regulate ER Ca(2+) homeostasis.
<b>序列相似性</b>	Belongs to the pannexin family.
<b>细胞定位</b>	Cell membrane. Cell junction > gap junction. Endoplasmic reticulum membrane.

## 图片



Immunofluorescence of Pannexin 1 in Human ovary tissue with ab139715 at 20 ug/mL.

Immunocytochemistry/ Immunofluorescence - Anti-Pannexin 1 antibody (ab139715)



Western blot - Anti-Pannexin 1 antibody (ab139715)

Anti-Pannexin 1 antibody (ab139715) at 1 µg/ml + Human Ovary tissue lysate at 15 µg

**Predicted band size:** 48 kDa

**Please note:** All products are "FOR RESEARCH USE ONLY. NOT FOR USE IN DIAGNOSTIC PROCEDURES"

### Our Abpromise to you: Quality guaranteed and expert technical support

---

- Replacement or refund for products not performing as stated on the datasheet
- Valid for 12 months from date of delivery
- Response to your inquiry within 24 hours
- We provide support in Chinese, English, French, German, Japanese and Spanish
- Extensive multi-media technical resources to help you
- We investigate all quality concerns to ensure our products perform to the highest standards

If the product does not perform as described on this datasheet, we will offer a refund or replacement. For full details of the Abpromise, please visit <https://www.abcam.cn/abpromise> or contact our technical team.

### Terms and conditions

---

- Guarantee only valid for products bought direct from Abcam or one of our authorized distributors