


Anti-PAN TEAD antibody ab97460

12 References 3 图像

概述

产品名称	Anti-PAN TEAD抗体
描述	兔多克隆抗体to PAN TEAD
宿主	Rabbit
经测试应用	适用于: WB, IHC-P
种属反应性	与反应: Human 预测可用于: Mouse, Pig 
免疫原	Recombinant fragment corresponding to Human PAN TEAD aa 1-250.
常规说明	<p>The Life Science industry has been in the grips of a reproducibility crisis for a number of years. Abcam is leading the way in addressing this with our range of recombinant monoclonal antibodies and knockout edited cell lines for gold-standard validation. Please check that this product meets your needs before purchasing.</p> <p>If you have any questions, special requirements or concerns, please send us an inquiry and/or contact our Support team ahead of purchase. Recommended alternatives for this product can be found below, along with publications, customer reviews and Q&amp;As</p>

性能

形式	Liquid
存放说明	Shipped at 4°C. Upon delivery aliquot and store at -20°C or -80°C. Avoid repeated freeze / thaw cycles.
存储溶液	pH: 7.00 Preservative: 0.025% Proclin 300 Constituents: 78% PBS, 1% BSA, 20% Glycerol (glycerin, glycerine)
纯度	Immunogen affinity purified
克隆	多克隆
同种型	IgG

应用

The Abpromise guarantee Abpromise™承诺保证使用ab97460于以下的经测试应用

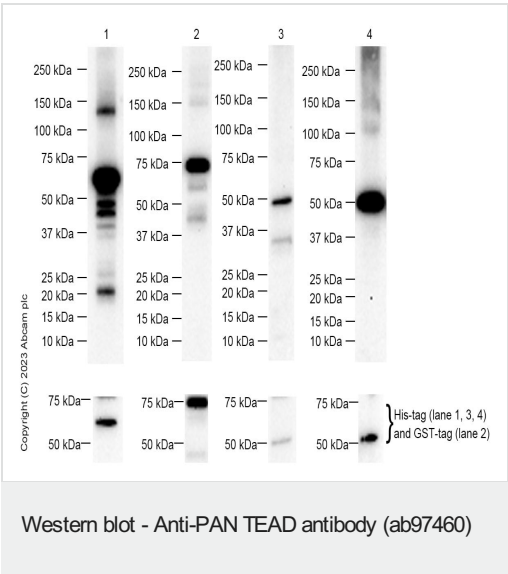
“应用说明”部分 下显示的仅为推荐的起始稀释度;实际最佳的稀释度/浓度应由使用者检定。

应用	Ab评论	说明
WB		1/500 - 1/3000. Predicted molecular weight: 48 kDa.
IHC-P		1/100 - 1/500.

靶标

细胞定位 Nuclear

图片



All lanes : Anti-PAN TEAD antibody (ab97460) at 1/1000 dilution

- Lane 1 : TEAD1 Human Recombinant Protein
- Lane 2 : TEAD2 Human Recombinant Protein
- Lane 3 : TEAD3 Human Recombinant Protein
- Lane 4 : TEAD4 Human Recombinant Protein

Lysates/proteins at 20 µg per lane.

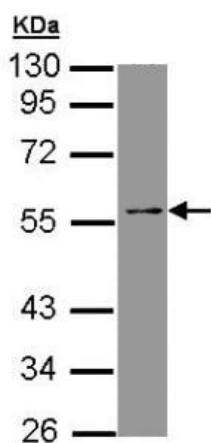
Secondary

All lanes : Goat Anti-Rabbit IgG H&L (HRP) ([ab97051](#)) at 1/20000 dilution

Predicted band size: 48 kDa

Exposure time: 180 seconds

Blocking and diluting buffer: 5% NFDM /TBST

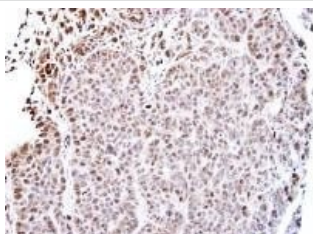


Western blot - Anti-PAN TEAD antibody (ab97460)

Anti-PAN TEAD antibody (ab97460) at 1/1000 dilution + HepG2 cell lysate at 30 µg

**Predicted band size:** 48 kDa

10% SDS PAGE



Immunohistochemistry (Formalin/PFA-fixed paraffin-embedded sections) - Anti-PAN TEAD antibody (ab97460)

ab97460, at 1/500 dilution, staining PAN TEAD in a paraffin-embedded SW480 (human) xenograft by Immunohistochemical analysis

**Please note:** All products are "FOR RESEARCH USE ONLY. NOT FOR USE IN DIAGNOSTIC PROCEDURES"

### Our Abpromise to you: Quality guaranteed and expert technical support

- Replacement or refund for products not performing as stated on the datasheet
- Valid for 12 months from date of delivery
- Response to your inquiry within 24 hours
- We provide support in Chinese, English, French, German, Japanese and Spanish
- Extensive multi-media technical resources to help you
- We investigate all quality concerns to ensure our products perform to the highest standards

If the product does not perform as described on this datasheet, we will offer a refund or replacement. For full details of the Abpromise, please visit <https://www.abcam.cn/abpromise> or contact our technical team.

#### **Terms and conditions**

---

- Guarantee only valid for products bought direct from Abcam or one of our authorized distributors