

Anti-pan Keratin antibody [80] ab8068

★★★★★ [12 Abreviews](#) [34 References](#) [4 图像](#)

概述

产品名称	Anti-pan Keratin抗体[80]
描述	小鼠单克隆抗体[80] to pan Keratin
宿主	Mouse
经测试应用	适用于: Flow Cyt, IHC-Fr, IHC-P, WB, ICC/IF
种属反应性	与反应: Mouse, Rat, Human
免疫原	Full length native protein (purified) corresponding to Human pan Keratin. Callus cytokeratins isolated from fresh human skin tissue
阳性对照	Human callus or keratinocytes
常规说明	<p>The Life Science industry has been in the grips of a reproducibility crisis for a number of years. Abcam is leading the way in addressing this with our range of recombinant monoclonal antibodies and knockout edited cell lines for gold-standard validation. Please check that this product meets your needs before purchasing.</p> <p>If you have any questions, special requirements or concerns, please send us an inquiry and/or contact our Support team ahead of purchase. Recommended alternatives for this product can be found below, along with publications, customer reviews and Q&As</p>

性能

形式	Liquid
存放说明	Shipped at 4°C. Store at +4°C short term (1-2 weeks). Upon delivery aliquot. Store at -20°C or -80°C. Avoid freeze / thaw cycle.
存储溶液	<p>pH: 7.3</p> <p>Preservative: 0.07% Sodium azide</p> <p>Constituent: 1% Fetal calf serum</p>
纯度	Tissue culture supernatant
克隆	单克隆
克隆编号	80
同种型	IgG1

应用

The Abpromise guarantee

Abpromise™ 承诺保证使用ab8068于以下的经测试应用

“应用说明”部分 下显示的仅为推荐的起始稀释度;实际最佳的稀释度/浓度应由使用者检定。

应用	Ab评论	说明
Flow Cyt		1/20. ab170190 - Mouse monoclonal IgG1, is suitable for use as an isotype control with this antibody.
IHC-Fr	★★★★★ (2)	Use at an assay dependent concentration. Stains all types of keratin containing cells (epithelia) in frozen sections of various tissues, with the exception of myoepithelial cells.
IHC-P	★★★★★ (3)	Use at an assay dependent concentration. For paraffin embedded tissue a TUF pretreatment is recommended.
WB	★★★★★ (1)	Use at an assay dependent concentration. Detects a band of approximately 65 kDa (predicted molecular weight: 65 kDa).
ICC/IF	★★★★★ (5)	Use a concentration of 1 µg/ml.

靶标

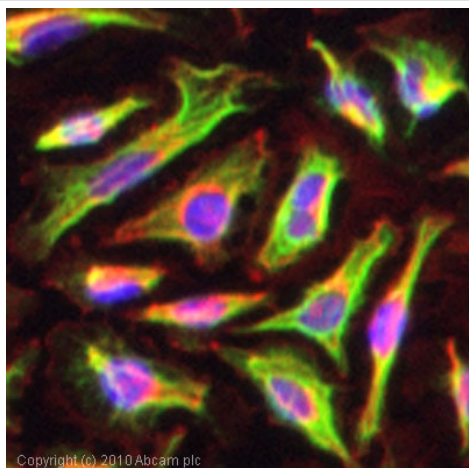
相关性

Cytokeratin is a family of basic and acidic proteins, present in dermal tissues. Each cytokeratin is formed by heterotetramers of different types of keratin, that span from 1 to 18. In keratinized epidermis, 50 kD keratin is present in the basal layer, while 56.5 kD keratin is present in suprabasal layers, where as 58 kD keratin is present in the basal and suprabasal layers, while 65 to 67 kD keratin is present in the cells above the basal layers.

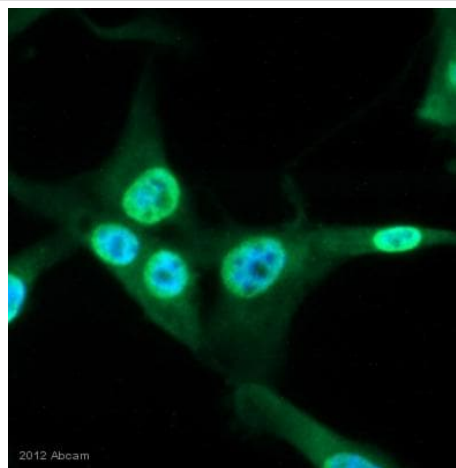
细胞定位

Cytoplasmic

图片

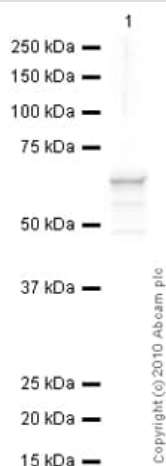


Immunocytochemistry/ Immunofluorescence - Anti-pan Keratin antibody [80] (ab8068)



Immunocytochemistry/ Immunofluorescence - Anti-pan Keratin antibody [80] (ab8068)

This image is courtesy of an anonymous Abreview



Western blot - Anti-pan Keratin antibody [80] (ab8068)

ICC/IF image of ab8068 stained HeLa cells. The cells were 100% methanol fixed (5 min) and then incubated in 1%BSA / 10% normal goat serum / 0.3M glycine in 0.1% PBS-Tween for 1h to permeabilise the cells and block non-specific protein-protein interactions. The cells were then incubated with the antibody (ab8068, 1µg/ml) overnight at +4°C. The secondary antibody (green) was Alexa Fluor® 488 goat anti-mouse IgG (H+L) used at a 1/1000 dilution for 1h. Alexa Fluor® 594 WGA was used to label plasma membranes (red) at a 1/200 dilution for 1h. DAPI was used to stain the cell nuclei (blue) at a concentration of 1.43µM.

Ab8068 staining pan Keratin in Human glioblastoma cell line by ICC/IF (Immunocytochemistry/Immunofluorescence). The cells were fixed with paraformaldehyde; permeabilized with 0.1% Triton X 100 in PBS and blocked with 0.5% BSA for 30 minutes at room temperature. Samples were incubated with primary antibody (1/50 dilution in 0.5% BSA in PBS) for 16hours at 4°C. An Alexa Fluor® 488 anti-mouse was used as a secondary antibody at 1/400 dilution.

Anti-pan Keratin antibody [80] (ab8068) at 1/250 dilution + A431 (Human epithelial carcinoma cell line) Whole Cell Lysate at 10 µg

Secondary

Goat Anti-Mouse IgG H&L (HRP) preadsorbed ([ab97040](#)) at 1/5000 dilution

Developed using the ECL technique.

Performed under reducing conditions.

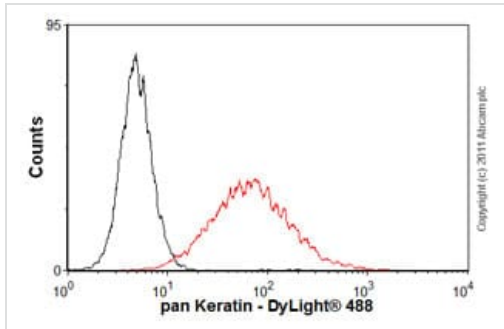
Predicted band size: 65 kDa

Observed band size: 65 kDa

Additional bands at: 49 kDa, 58 kDa. We are unsure as to the

identity of these extra bands.

Exposure time: 30 seconds



Flow Cytometry - Anti-pan Keratin antibody [80]
(ab8068)

Overlay histogram showing A431 cells stained with ab8068 (red line). The cells were fixed with 80% methanol (5 min) and then permeabilized with 0.1% PBS-Triton for 20 min. The cells were then incubated in 1x PBS / 10% normal goat serum / 0.3M glycine to block non-specific protein-protein interactions followed by the antibody (ab8068, 1/20 dilution) for 30 min at 22°C. The secondary antibody used was DyLight® 488 goat anti-mouse IgG (H+L) (**ab96879**) at 1/500 dilution for 30 min at 22°C. Isotype control antibody (black line) was mouse IgG1 [ICIGG1](**ab91353**, 2µg/1x10⁶ cells) used under the same conditions. Acquisition of >5,000 events was performed.

Please note: All products are "FOR RESEARCH USE ONLY. NOT FOR USE IN DIAGNOSTIC PROCEDURES"

Our Abpromise to you: Quality guaranteed and expert technical support

- Replacement or refund for products not performing as stated on the datasheet
- Valid for 12 months from date of delivery
- Response to your inquiry within 24 hours
- We provide support in Chinese, English, French, German, Japanese and Spanish
- Extensive multi-media technical resources to help you
- We investigate all quality concerns to ensure our products perform to the highest standards

If the product does not perform as described on this datasheet, we will offer a refund or replacement. For full details of the Abpromise, please visit <https://www.abcam.cn/abpromise> or contact our technical team.

Terms and conditions

- Guarantee only valid for products bought direct from Abcam or one of our authorized distributors