

# Anti-PAK1 + PAK2 + PAK3 (phospho T423) antibody ab2477

[7 References](#) [2 图像](#)

### 概述

产品名称	Anti-PAK1 + PAK2 + PAK3 (phospho T423)抗体
描述	兔多克隆抗体to PAK1 + PAK2 + PAK3 (phospho T423)
宿主	Rabbit
特异性	This phospho specific polyclonal antibody is specific for phosphorylated Threonine 423 of Human PAK 1 + 2 + 3. Reactivity with non-phosphorylated PAK 1 + 2 + 3 is less than 1% by ELISA.
经测试应用	<b>适用于:</b> Dot blot, WB
种属反应性	<b>与反应:</b> Human
免疫原	Synthetic peptide corresponding to Human PAK1 + PAK2 + PAK3 (phospho T423) conjugated to keyhole limpet haemocyanin. Corresponding to amino acids 413-433 of Human PAK 1, 408-428 of human PAK 2 and 411-431 of human PAK 3.

 [Run BLAST with](#)

 [Run BLAST with](#)

### 常规说明

P21-activated kinase (PAK) is actually a family of serine/threonine protein kinases, members of which are activated by small molecular weight GTPases. The three most common isoforms are PAK 1, PAK 2, and PAK 3 (also known as alpha PAK, gamma PAK, and beta PAK, respectively). These kinases contain numerous regulatory elements that trigger diverse signaling processes such as those initiated by activated GTPases, interaction with Src homology 3 (SH3) domains, and caspase mediated proteolytic cleavage. Autophosphorylation of threonine 423 (threonine 402 for PAK 2 and threonine 421 for PAK 3), catalyzed by Cdc42, is required for activation of PAK.

The Life Science industry has been in the grips of a reproducibility crisis for a number of years. Abcam is leading the way in addressing this with our range of recombinant monoclonal antibodies and knockout edited cell lines for gold-standard validation. Please check that this product meets your needs before purchasing.

If you have any questions, special requirements or concerns, please send us an inquiry and/or contact our Support team ahead of purchase. Recommended alternatives for this product can be found below, along with publications, customer reviews and Q&As

### 性能

形式	Liquid
存放说明	Shipped at 4°C. Upon delivery aliquot and store at -20°C or -80°C. Avoid repeated freeze / thaw

	cycles.
存储溶液	Preservative: 0.01% Sodium azide Constituents: 0.42% Potassium phosphate, 0.87% Sodium chloride
纯度	Immunogen affinity purified
纯化说明	This antibody was affinity purified from monospecific antiserum by immunoaffinity purification. Antiserum was first purified against the phosphorylated form of the immunizing peptide. The resultant affinity purified antibody was then cross-adsorbed against the non-phosphorylated form of the immunizing peptide.
Primary antibody说明	P21-activated kinase (PAK) is actually a family of serine/threonine protein kinases, members of which are activated by small molecular weight GTPases. The three most common isoforms are PAK 1, PAK 2, and PAK 3 (also known as alpha PAK, gamma PAK, and beta PAK, respectively). These kinases contain numerous regulatory elements that trigger diverse signaling processes such as those initiated by activated GTPases, interaction with Src homology 3 (SH3) domains, and caspase mediated proteolytic cleavage. Autophosphorylation of threonine 423 (threonine 402 for PAK 2 and threonine 421 for PAK 3), catalyzed by Cdc42, is required for activation of PAK.
克隆	多克隆
同种型	IgG

## 应用

**The Abpromise guarantee**      **Abpromise™**承诺保证使用ab2477于以下的经测试应用

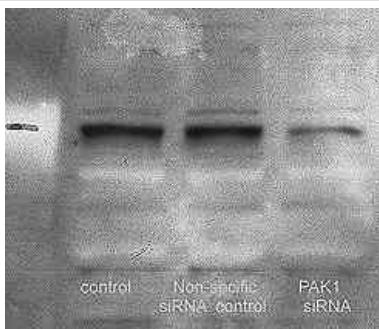
“应用说明”部分 下显示的仅为推荐的起始稀释度;实际最佳的稀释度/浓度应由使用者检定。

应用	Ab评论	说明
Dot blot		1/1000.
WB		1/500 - 1/2000. Detects a band of approximately 65 kDa.

## 靶标

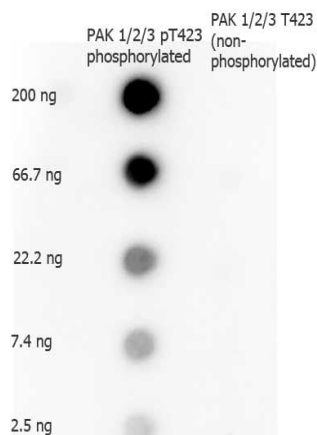
相关性	In mammals, there are several identified isoforms of p21 Activated Protein Kinases or PAKs: PAK1 and PAK3 are mostly brain specific, while PAK2 is expressed ubiquitously. Mutations of the gene coding for PAK3 are associated with X linked mental retardation and PAK3 is a key regulator of synapse formation and plasticity in the hippocampus. PAK3 is thought to play a key role in regulation of cell shape and motility as well as cell death.
细胞定位	Cytoplasm. Recruited to focal adhesions upon activation

## 图片



Western blot - Anti-PAK1 + PAK2 + PAK3 (phospho T423) antibody (ab2477)

Western blot probing with PAK1 antibody (ab2477). The major band is at 65 kDa and weaker bands can be detected at 90 and 100 kDa. This picture was kindly submitted by Sue Thomas as part of her review.



Dot Blot - Anti-PAK1 + PAK2 + PAK3 (phospho T423) antibody (ab2477)

Dot Blot analysis labeling phosphorylated and non-phosphorylated forms of the immunizing peptide with ab2477 at 1/1000 dilution, incubated overnight at 4°C. Secondary antibody: Dylight™488 rabbit secondary antibody at 1/40000 dilution for 45 min at room temperature. Block: Blocking Buffer for Fluorescent Western Blotting for 60 min at RT.

Load: 200 ng, 66.7 ng, 22.2 ng, 7.4 ng, or 2.5 ng.

**Please note:** All products are "FOR RESEARCH USE ONLY. NOT FOR USE IN DIAGNOSTIC PROCEDURES"

### Our Abpromise to you: Quality guaranteed and expert technical support

- Replacement or refund for products not performing as stated on the datasheet
- Valid for 12 months from date of delivery
- Response to your inquiry within 24 hours
- We provide support in Chinese, English, French, German, Japanese and Spanish
- Extensive multi-media technical resources to help you
- We investigate all quality concerns to ensure our products perform to the highest standards

If the product does not perform as described on this datasheet, we will offer a refund or replacement. For full details of the Abpromise, please visit <https://www.abcam.cn/abpromise> or contact our technical team.

## Terms and conditions

---

- Guarantee only valid for products bought direct from Abcam or one of our authorized distributors