




Anti-PAI1 antibody ab31280

★★★★★ [4 Abreviews](#) [8 References](#) [4 图像](#)

概述

产品名称	Anti-PAI1抗体
描述	山羊多克隆抗体to PAI1
宿主	Goat
特异性	This antibody is expected to recognise both reported isoforms.
经测试应用	适用于: WB, IHC-P
种属反应性	与反应: Human 预测可用于: Dog, Chimpanzee 
免疫原	Synthetic peptide corresponding to Human PAI1 aa 50-150 (internal sequence). Database link: NP_000593.1  Run BLAST with  Run BLAST with
阳性对照	IHC-P: Human placenta tissue. WB: Human liver tissue, A549, HepG2, and HeLa cell lysates.
常规说明	<p>The Life Science industry has been in the grips of a reproducibility crisis for a number of years. Abcam is leading the way in addressing this with our range of recombinant monoclonal antibodies and knockout edited cell lines for gold-standard validation. Please check that this product meets your needs before purchasing.</p> <p>If you have any questions, special requirements or concerns, please send us an inquiry and/or contact our Support team ahead of purchase. Recommended alternatives for this product can be found below, along with publications, customer reviews and Q&As</p>

性能

形式	Liquid
存放说明	Shipped at 4°C. Upon delivery aliquot and store at -20°C. Avoid freeze / thaw cycles.
存储溶液	pH: 7.30 Preservative: 0.02% Sodium azide Constituents: 99% Tris buffered saline, 0.5% BSA
纯度	Immunogen affinity purified
纯化说明	Purified from goat serum by ammonium sulphate precipitation followed by antigen affinity chromatography using the immunizing peptide.
克隆	多克隆

同种型

IgG

应用

The Abpromise guarantee

Abpromise™承诺保证使用ab31280于以下的经测试应用

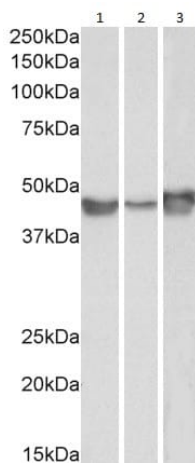
“应用说明”部分 下显示的仅为推荐的起始稀释度;实际最佳的稀释度/浓度应由使用者检定。

应用	Ab评论	说明
WB	★★★★★ (3)	Use a concentration of 0.1 - 0.3 µg/ml. Detects a band of approximately 45 kDa (predicted molecular weight: 45 kDa). 1 hour primary incubation is recommended for this product.
IHC-P	★★★★★ (1)	Use a concentration of 4 - 6 µg/ml.

靶标

功能	This inhibitor acts as 'bait' for tissue plasminogen activator, urokinase, and protein C. Its rapid interaction with TPA may function as a major control point in the regulation of fibrinolysis.
组织特异性	Found in plasma and platelets and in endothelial, hepatoma and fibrosarcoma cells.
疾病相关	Defects in SERPINE1 are the cause of plasminogen activator inhibitor-1 deficiency (PAI-1D) [MIM:613329]. It is a hematologic disorder characterized by increased bleeding after trauma, injury, or surgery. Affected females have menorrhagia. The bleeding defect is due to increased fibrinolysis of fibrin blood clots due to deficiency of plasminogen activator inhibitor-1, which inhibits tissue and urinary activators of plasminogen. Note=High concentrations of SERPINE1 seem to contribute to the development of venous but not arterial occlusions.
序列相似性	Belongs to the serpin family.
翻译后修饰	Inactivated by proteolytic attack of the urokinase-type (u-PA) and the tissue-type (TPA), cleaving the 369-Arg-Met-370 bond.
细胞定位	Secreted.

图片



Western blot - Anti-PAI1 antibody (ab31280)

All lanes : Anti-PAI1 antibody (ab31280) at 0.1 µg/ml

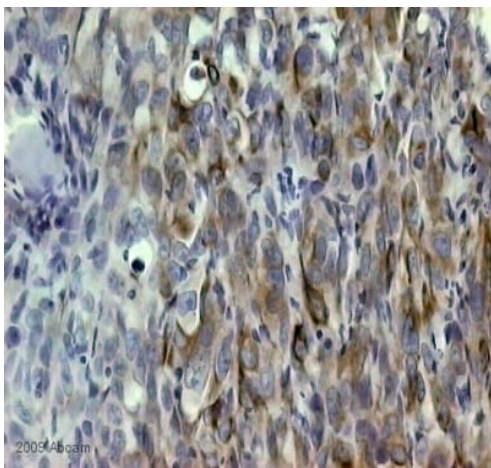
Lane 1 : A549 cell lysate (35µg protein in RIPA buffer)

Lane 2 : HepG2 cell lysate (35µg protein in RIPA buffer)

Lane 3 : HeLa cell lysate (35µg protein in RIPA buffer)

Developed using the ECL technique.

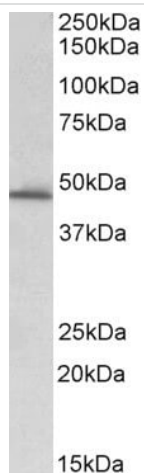
Predicted band size: 45 kDa



Immunohistochemistry (Formalin/PFA-fixed paraffin-embedded sections) - Anti-PAI1 antibody (ab31280)

This image is courtesy of an anonymous Abreview

ab31280, at 1/1000, staining plasminogen activator inhibitor 1 (PAI1) in human MDA-MB-231 cells grown in mice by Immunohistochemistry (Formalin/PFA-fixed paraffin-embedded sections). Sections were paraformaldehyde fixed and blocked in 10% casein for 30 minutes at 22°C and then incubated with ab31280, for 17 hours at 4°C. Horse polyclonal to goat IgG, diluted 1/200, was used as the secondary antibody.

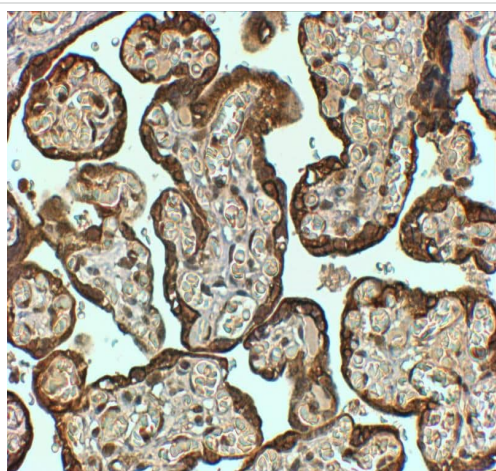


Western blot - Anti-PAI1 antibody (ab31280)

Anti-PAI1 antibody (ab31280) at 0.3 µg/ml + Human liver lysate
(35µg protein in RIPA buffer)

Developed using the ECL technique.

Predicted band size: 45 kDa



Immunohistochemistry (Formalin/PFA-fixed paraffin-embedded sections) - Anti-PAI1 antibody (ab31280)

ab31280 (4µg/ml) staining of paraffin embedded Human Placenta shows strong staining of cytotrophoblasts. Steamed antigen retrieval with citrate buffer pH 6, HRP-staining.

Please note: All products are "FOR RESEARCH USE ONLY. NOT FOR USE IN DIAGNOSTIC PROCEDURES"

Our Abpromise to you: Quality guaranteed and expert technical support

- Replacement or refund for products not performing as stated on the datasheet
- Valid for 12 months from date of delivery
- Response to your inquiry within 24 hours
- We provide support in Chinese, English, French, German, Japanese and Spanish
- Extensive multi-media technical resources to help you

- We investigate all quality concerns to ensure our products perform to the highest standards

If the product does not perform as described on this datasheet, we will offer a refund or replacement. For full details of the Abpromise, please visit <https://www.abcam.cn/abpromise> or contact our technical team.

Terms and conditions

- Guarantee only valid for products bought direct from Abcam or one of our authorized distributors