

### Anti-PAEP/Glycodelin antibody [EP870Y] ab53289

**重组** RabMAb

★★★★★ **2 Abreviews** **4 References** **3 图像**

#### 概述

产品名称	Anti-PAEP/Glycodelin抗体[EP870Y]
描述	兔单克隆抗体[EP870Y] to PAEP/Glycodelin
宿主	Rabbit
经测试应用	<b>适用于:</b> WB <b>不适用于:</b> IHC-P
种属反应性	<b>与反应:</b> Human
免疫原	Synthetic peptide within Human PAEP/Glycodelin aa 150-250 (C terminal). The exact sequence is proprietary. Database link: <b>P09466</b>
阳性对照	WB: TPA-treated K562 cell lysate. Human placenta, kidney, and brain tissue lysates.
常规说明	This product is a recombinant monoclonal antibody, which offers several advantages including: <ul style="list-style-type: none"> <li>- High batch-to-batch consistency and reproducibility</li> <li>- Improved sensitivity and specificity</li> <li>- Long-term security of supply</li> <li>- Animal-free production</li> </ul> For more information <b><a href="#">see here</a></b> . Our RabMAb <sup>®</sup> technology is a patented hybridoma-based technology for making rabbit monoclonal antibodies. For details on our patents, please refer to <b><a href="#">RabMAb<sup>®</sup> patents</a></b> . Mouse, Rat: We have preliminary internal testing data to indicate this antibody may not react with these species. Please contact us for more information.

#### 性能

形式	Liquid
存放说明	Shipped at 4°C. Store at +4°C short term (1-2 weeks). Upon delivery aliquot. Store at -20°C long term. Avoid freeze / thaw cycle.
存储溶液	pH: 7.20 Preservative: 0.01% Sodium azide Constituents: 59% PBS, 40% Glycerol (glycerin, glycerine), 0.05% BSA
纯度	Protein A purified

## 应用

**Abpromise™** 承诺保证使用ab53289于以下的经测试应用

应用	Ab评论	说明
WB		1/1000 - 1/10000. Detects a band of approximately 21 kDa (predicted molecular weight: 21 kDa).

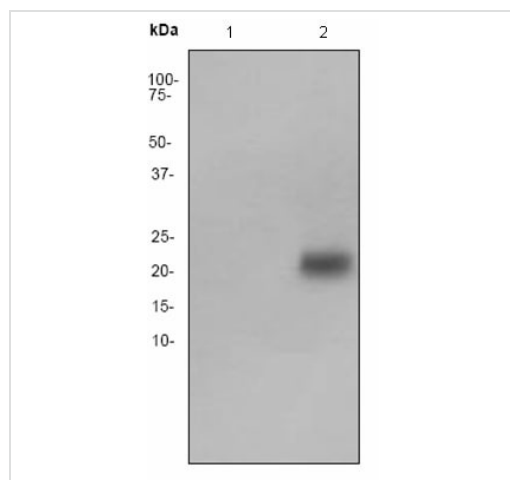
## 靶标

细胞定位	Secreted.
------	-----------

图片



Blocking and diluting buffer: 5% NFDM/TBST.



Western blot - Anti-PAEP/Glycodelin antibody  
[EP870Y] (ab53289)

**All lanes :** Anti-PAEP/Glycodelin antibody [EP870Y] (ab53289) at  
1/500 dilution

**Lane 1 :** K562 (Human chronic myelogenous leukemia cell line  
from bone marrow) cell lysate

**Lane 2 :** TPA-treated K562 (Human chronic myelogenous  
leukemia cell line from bone marrow) cell lysate





#### Secondary

**All lanes :** Goat anti-rabbit HRP at 1/2000 dilution

**Predicted band size:** 21 kDa

**Observed band size:** 21 kDa

Why choose a recombinant antibody?

 <p><b>Research with confidence</b> Consistent and reproducible results</p>	 <p><b>Long-term and scalable supply</b> Recombinant technology</p>
 <p><b>Success from the first experiment</b> Confirmed specificity</p>	 <p><b>Ethical standards compliant</b> Animal-free production</p>

Anti-PAEP/Glycodelin antibody [EP870Y] (ab53289)

**Please note:** All products are "FOR RESEARCH USE ONLY. NOT FOR USE IN DIAGNOSTIC PROCEDURES"

#### Our Abpromise to you: Quality guaranteed and expert technical support

- Replacement or refund for products not performing as stated on the datasheet
- Valid for 12 months from date of delivery
- Response to your inquiry within 24 hours
- We provide support in Chinese, English, French, German, Japanese and Spanish
- Extensive multi-media technical resources to help you

- We investigate all quality concerns to ensure our products perform to the highest standards

If the product does not perform as described on this datasheet, we will offer a refund or replacement. For full details of the Abpromise, please visit <https://www.abcam.cn/abpromise> or contact our technical team.

### **Terms and conditions**

---

- Guarantee only valid for products bought direct from Abcam or one of our authorized distributors