

Anti-p38 (phospho T180 + Y182) antibody [EPR18120] ab195049

 **RabMAb**

61 References [4 图像](#)

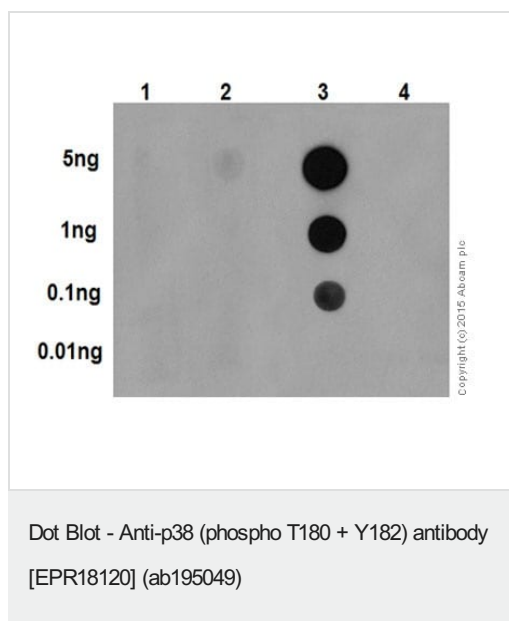
概述

产品名称	Anti-p38 (phospho T180 + Y182)抗体[EPR18120]
描述	兔单克隆抗体[EPR18120] to p38 (phospho T180 + Y182)
宿主	Rabbit
经测试应用	适用于: WB, Dot blot
种属反应性	与反应: Mouse, Human
免疫原	Synthetic peptide. This information is proprietary to Abcam and/or its suppliers.
阳性对照	WB: HEK-293 whole cell lysate treated with UV (60 J/M2) for 60 minutes; NIH/3T3 whole cell lysate treated with UV (60 J/M2) for 60 minutes.
常规说明	<p>This product is a recombinant monoclonal antibody, which offers several advantages including:</p> <ul style="list-style-type: none"> - High batch-to-batch consistency and reproducibility - Improved sensitivity and specificity - Long-term security of supply - Animal-free production <p>For more information see here.</p> <p>Our RabMAb[®] technology is a patented hybridoma-based technology for making rabbit monoclonal antibodies. For details on our patents, please refer to RabMAb[®] patents.</p>

性能

形式	Liquid
存放说明	Shipped at 4°C. Store at +4°C short term (1-2 weeks). Upon delivery aliquot. Store at -20°C long term. Avoid freeze / thaw cycle.
存储溶液	<p>pH: 7.2</p> <p>Preservative: 0.01% Sodium azide</p> <p>Constituents: 59% PBS, 40% Glycerol (glycerin, glycerine), 0.05% BSA</p>
纯度	Protein A purified
克隆	单克隆
克隆编号	EPR18120

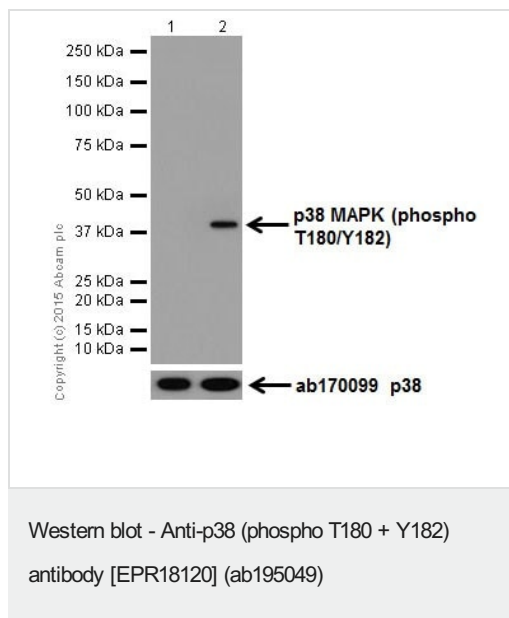
同种型	IgG	
应用		
<div>The Abpromise guarantee<div>Abpromise™承诺保证使用ab195049于以下的经测试应用</div></div> <div>“应用说明”部分 下显示的仅为推荐的起始稀释度;实际最佳的稀释度/浓度应由使用者检定。</div>		
应用	Ab评论	说明
WB		1/1000. Detects a band of approximately 41 kDa (predicted molecular weight: 41 kDa).
Dot blot		1/1000.
靶标		
功能	Responds to activation by environmental stress, pro-inflammatory cytokines and lipopolysaccharide (LPS) by phosphorylating a number of transcription factors, such as ELK1 and ATF2 and several downstream kinases, such as MAPKAPK2 and MAPKAPK5. Plays a critical role in the production of some cytokines, for example IL-6. May play a role in stabilization of EPO mRNA during hypoxic stress. Isoform Mxi2 activation is stimulated by mitogens and oxidative stress and only poorly phosphorylates ELK1 and ATF2. Isoform Exip may play a role in the early onset of apoptosis.	
组织特异性	Brain, heart, placenta, pancreas and skeletal muscle. Expressed to a lesser extent in lung, liver and kidney.	
序列相似性	Belongs to the protein kinase superfamily. CMGC Ser/Thr protein kinase family. MAP kinase subfamily. Contains 1 protein kinase domain.	
结构域	The TXY motif contains the threonine and tyrosine residues whose phosphorylation activates the MAP kinases.	
翻译后修饰	Dually phosphorylated on Thr-180 and Tyr-182, which activates the enzyme. Phosphorylated upon DNA damage, probably by ATM or ATR.	
细胞定位	Cytoplasm. Nucleus.	



Dot blot analysis of p38 (phospho T180) peptide (Lane 1), p38 (phospho Y182) (Lane 2), p38 (phospho T180 + Y182) peptide (Lane 3), and non-phospho peptide (Lane 4), labeled using ab195049 at 1/1000 dilution, followed by Goat Anti-Rabbit IgG, (H+L), Peroxidase conjugated secondary antibody ([ab97051](#)) at 1/1000 dilution.

Blocking/Dilution buffer: 5% NFDm/TBST.

Exposure time: 3 minutes.



All lanes : Anti-p38 (phospho T180 + Y182) antibody [EPR18120] (ab195049) at 1/1000 dilution

Lane 1 : Untreated HEK-293 (Human epithelial cells from embryonic kidney) whole cell lysates

Lane 2 : HEK-293 whole cell lysates treated with UV (60 J/M²) for 60 minutes

Lysates/proteins at 10 µg per lane.

Secondary

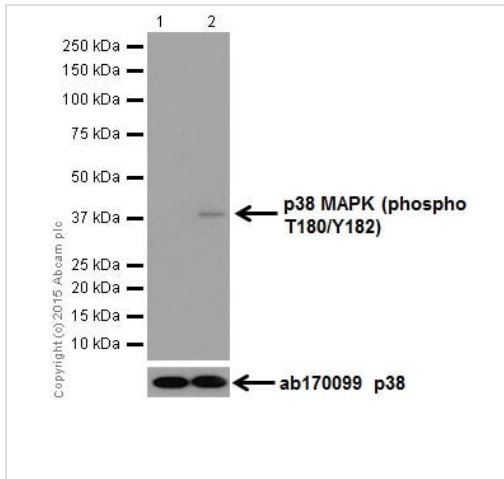
All lanes : Goat Anti-Rabbit IgG H&L (HRP) ([ab97051](#)) at 1/1000 dilution

Predicted band size: 41 kDa

Observed band size: 41 kDa

Exposure time: 3 minutes

Blocking/Dilution buffer: 5% NFDM/TBST.



Western blot - Anti-p38 (phospho T180 + Y182) antibody [EPR18120] (ab195049)

All lanes : Anti-p38 (phospho T180 + Y182) antibody [EPR18120] (ab195049) at 1/1000 dilution

Lane 1 : Untreated NIH/3T3 (Mouse embryo fibroblast cells) whole cell lysate

Lane 2 : NIH/3T3 whole cell lysate treated with UV (60 J/M2) for 60 minutes

Lysates/proteins at 10 µg per lane.

Secondary

All lanes : Goat Anti-Rabbit IgG H&L (HRP) ([ab97051](#)) at 1/1000 dilution





Predicted band size: 41 kDa

Observed band size: 41 kDa

Exposure time: 3 minutes

Blocking/Dilution buffer: 5% NFDM/TBST.

Why choose a recombinant antibody?

 <p>Research with confidence Consistent and reproducible results</p>	 <p>Long-term and scalable supply Recombinant technology</p>
 <p>Success from the first experiment Confirmed specificity</p>	 <p>Ethical standards compliant Animal-free production</p>

Anti-p38 (phospho T180 + Y182) antibody
[EPR18120] (ab195049)

Please note: All products are "FOR RESEARCH USE ONLY. NOT FOR USE IN DIAGNOSTIC PROCEDURES"

Our Abpromise to you: Quality guaranteed and expert technical support

-
- Replacement or refund for products not performing as stated on the datasheet
 - Valid for 12 months from date of delivery
 - Response to your inquiry within 24 hours

 - We provide support in Chinese, English, French, German, Japanese and Spanish
 - Extensive multi-media technical resources to help you
 - We investigate all quality concerns to ensure our products perform to the highest standards

If the product does not perform as described on this datasheet, we will offer a refund or replacement. For full details of the Abpromise, please visit <https://www.abcam.cn/abpromise> or contact our technical team.

Terms and conditions

- Guarantee only valid for products bought direct from Abcam or one of our authorized distributors