

Anti-P2X2 antibody ab229151

3 图像

概述

产品名称	Anti-P2X2抗体
描述	兔多克隆抗体to P2X2
宿主	Rabbit
经测试应用	适用于: IHC-P, WB
种属反应性	与反应: Mouse, Human
免疫原	Recombinant fragment within Human P2X2 (internal sequence). The exact sequence is proprietary. Database link: Q9UBL9
阳性对照	WB: HepG2 whole cell lysate (ab7900) and mouse brain tissue extract. IHC-P: Human breast cancer tissue.
常规说明	<p>The Life Science industry has been in the grips of a reproducibility crisis for a number of years. Abcam is leading the way in addressing this with our range of recombinant monoclonal antibodies and knockout edited cell lines for gold-standard validation. Please check that this product meets your needs before purchasing.</p> <p>If you have any questions, special requirements or concerns, please send us an inquiry and/or contact our Support team ahead of purchase. Recommended alternatives for this product can be found below, along with publications, customer reviews and Q&As</p>

性能

形式	Liquid
存放说明	Shipped at 4°C. Store at +4°C short term (1-2 weeks). Upon delivery aliquot. Store at -20°C long term. Avoid freeze / thaw cycle.
存储溶液	pH: 7.00 Preservative: 0.01% Thimerosal (merthiolate) Constituents: 78.99% PBS, 1% BSA, 20% Glycerol (glycerin, glycerine)
纯度	Immunogen affinity purified
克隆	多克隆
同种型	IgG

应用

The Abpromise guarantee

Abpromise™ 承诺保证使用 ab229151 于以下的经测试应用

“应用说明”部分 下显示的仅为推荐的起始稀释度;实际最佳的稀释度/浓度应由使用者检定。

应用	Ab评论	说明
IHC-P		1/100 - 1/1000.
WB		1/500 - 1/3000. Predicted molecular weight: 52 kDa.

靶标

功能

Ion channel gated by extracellular ATP involved in a variety of cellular responses, such as excitatory postsynaptic responses in sensory neurons, neuromuscular junctions (NMJ) formation, hearing, perception of taste and peristalsis. In the inner ear, regulates sound transduction and auditory neurotransmission, outer hair cell electromotility, inner ear gap junctions, and K(+) recycling. Mediates synaptic transmission between neurons and from neurons to smooth muscle.

疾病相关

Deafness, autosomal dominant, 41

序列相似性

Belongs to the P2X receptor family.

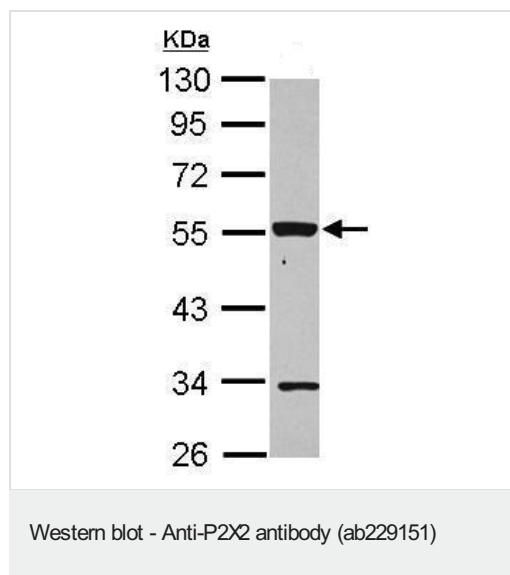
细胞定位

Cell membrane. Localizes to the apical membranes of hair cells in the organ of Corti.

形式

There are 7 isoforms produced by alternative splicing.

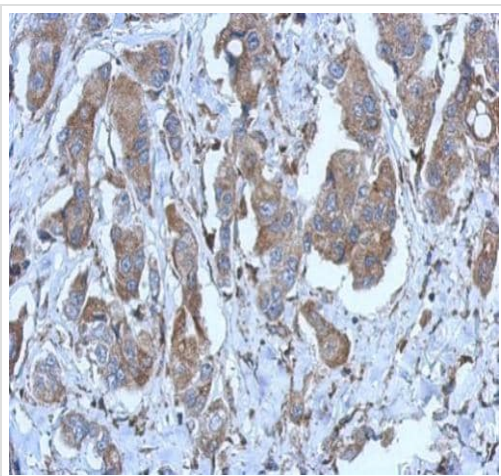
图片



Anti-P2X2 antibody (ab229151) at 1/1000 dilution + HepG2 (human liver hepatocellular carcinoma cell line) whole cell lysate at 30 µg

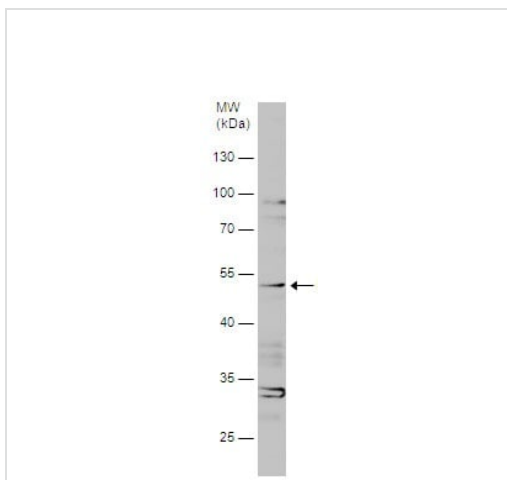
Predicted band size: 52 kDa

10% SDS-PAGE



Immunohistochemistry (Formalin/PFA-fixed paraffin-embedded sections) - Anti-P2X2 antibody (ab229151)

Paraffin-embedded human breast cancer tissue stained for P2X2 using ab229151 at 1/500 dilution in immunohistochemical analysis.



Western blot - Anti-P2X2 antibody (ab229151)

Anti-P2X2 antibody (ab229151) at 1/500 dilution + Mouse brain tissue extract at 50 μ g

Predicted band size: 52 kDa

10% SDS-PAGE

Please note: All products are "FOR RESEARCH USE ONLY. NOT FOR USE IN DIAGNOSTIC PROCEDURES"

Our Abpromise to you: Quality guaranteed and expert technical support

- Replacement or refund for products not performing as stated on the datasheet
- Valid for 12 months from date of delivery
- Response to your inquiry within 24 hours
- We provide support in Chinese, English, French, German, Japanese and Spanish

- Extensive multi-media technical resources to help you
- We investigate all quality concerns to ensure our products perform to the highest standards

If the product does not perform as described on this datasheet, we will offer a refund or replacement. For full details of the Abpromise, please visit <https://www.abcam.cn/abpromise> or contact our technical team.

Terms and conditions

- Guarantee only valid for products bought direct from Abcam or one of our authorized distributors