

### Anti-P Glycoprotein antibody ab235954

★★★★★ [2 Abreviews](#) [9 References](#) [3 图像](#)

#### 概述

<b>产品名称</b>	Anti-P Glycoprotein抗体
<b>描述</b>	兔多克隆抗体to P Glycoprotein
<b>宿主</b>	Rabbit
<b>经测试应用</b>	<b>适用于:</b> IHC-P, ICC/IF
<b>种属反应性</b>	<b>与反应:</b> Human <b>预测可用于:</b> Mouse, Rat, Chinese hamster 
<b>免疫原</b>	Recombinant fragment corresponding to Human P Glycoprotein aa 200-300. Database link: <a href="#">P08183</a>  <a href="#">Run BLAST with</a>  <a href="#">Run BLAST with</a>
<b>阳性对照</b>	WB: HepG2 and EC109 whole cell lysate. IHC-P: Human liver cancer and placenta tissue. ICC/IF: HepG2 cells.
<b>常规说明</b>	The Life Science industry has been in the grips of a reproducibility crisis for a number of years. Abcam is leading the way in addressing this with our range of recombinant monoclonal antibodies and knockout edited cell lines for gold-standard validation. Please check that this product meets your needs before purchasing.  If you have any questions, special requirements or concerns, please send us an inquiry and/or contact our Support team ahead of purchase. Recommended alternatives for this product can be found below, along with publications, customer reviews and Q&As

#### 性能

<b>形式</b>	Liquid
<b>存放说明</b>	Shipped at 4°C. Store at +4°C short term (1-2 weeks). Upon delivery aliquot. Store at -20°C long term. Avoid freeze / thaw cycle.
<b>存储溶液</b>	pH: 7.40 Preservative: 0.03% Proclin 300 Constituents: 50% Glycerol (glycerin, glycerine), PBS
<b>纯度</b>	Protein G purified
<b>纯化说明</b>	Purity >95%.
<b>克隆</b>	多克隆

## 应用

**The Abpromise guarantee** **Abpromise™**承诺保证使用ab235954于以下的经测试应用

“应用说明”部分下显示的仅为推荐的起始稀释度;实际最佳的稀释度/浓度应由使用者检定。

应用	Ab评论	说明
IHC-P		1/20 - 1/200.
ICC/IF		1/50 - 1/200.

## 靶标

## 功能

Energy-dependent efflux pump responsible for decreased drug accumulation in multidrug-resistant cells.

## 组织特异性

Expressed in liver, kidney, small intestine and brain.

## 疾病相关

Genetic variations in ABCB1 are associated with susceptibility to inflammatory bowel disease type 13 (IBD13) [MIM:612244]. Inflammatory bowel disease is characterized by a chronic relapsing intestinal inflammation. It is subdivided into Crohn disease and ulcerative colitis phenotypes. Crohn disease may involve any part of the gastrointestinal tract, but most frequently the terminal ileum and colon. Bowel inflammation is transmural and discontinuous; it may contain granulomas or be associated with intestinal or perianal fistulas. In contrast, in ulcerative colitis, the inflammation is continuous and limited to rectal and colonic mucosal layers; fistulas and granulomas are not observed. Both diseases include extraintestinal inflammation of the skin, eyes, or joints. Crohn disease and ulcerative colitis are commonly classified as autoimmune diseases.

## 序列相似性

Belongs to the ABC transporter superfamily. ABCB family. Multidrug resistance exporter (TC 3.A.1.201) subfamily.

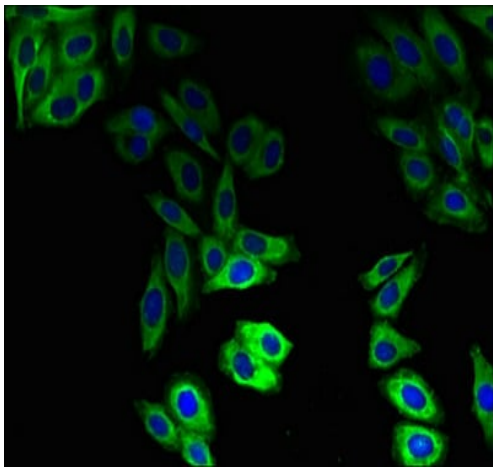
Contains 2 ABC transmembrane type-1 domains.

Contains 2 ABC transporter domains.

## 细胞定位

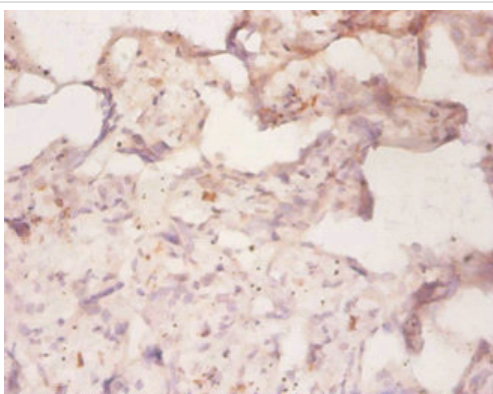
Membrane.

## 图片



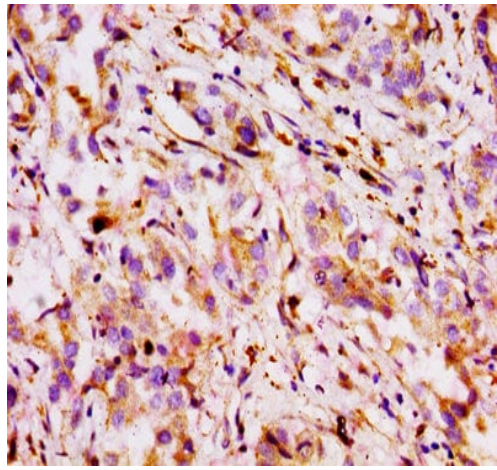
Immunocytochemistry/ Immunofluorescence - Anti-P Glycoprotein antibody (ab235954)

HepG2 (Human liver hepatocellular carcinoma cell line) cells stained for P Glycoprotein using ab235954 at a dilution of 1/100 in ICC/IF. Secondary used is an Alexa-Fluor<sup>®</sup>488-conjugated Goat Anti-Rabbit IgG (H+L).



Immunohistochemistry (Formalin/PFA-fixed paraffin-embedded sections) - Anti-P Glycoprotein antibody (ab235954)

Paraffin-embedded human placenta tissue stained for P Glycoprotein with ab235954 at a 1/50 dilution in immunohistochemical analysis.



Paraffin-embedded human liver cancer tissue stained for P Glycoprotein with ab235954 at a 1/100 dilution in immunohistochemical analysis.

Immunohistochemistry (Formalin/PFA-fixed paraffin-embedded sections) - Anti-P Glycoprotein antibody (ab235954)

**Please note:** All products are "FOR RESEARCH USE ONLY. NOT FOR USE IN DIAGNOSTIC PROCEDURES"

### **Our Abpromise to you: Quality guaranteed and expert technical support**

---

- Replacement or refund for products not performing as stated on the datasheet
- Valid for 12 months from date of delivery
- Response to your inquiry within 24 hours
- We provide support in Chinese, English, French, German, Japanese and Spanish
- Extensive multi-media technical resources to help you
- We investigate all quality concerns to ensure our products perform to the highest standards

If the product does not perform as described on this datasheet, we will offer a refund or replacement. For full details of the Abpromise, please visit <https://www.abcam.cn/abpromise> or contact our technical team.

### **Terms and conditions**

---

- Guarantee only valid for products bought direct from Abcam or one of our authorized distributors