

# Anti-OCRL antibody [EP10256] ab181039

敲除验证 RabMAb<sup>®</sup>

**1** References **3** 图像

### 概述

产品名称	Anti-OCRL抗体[EP10256]
描述	兔单克隆抗体[EP10256] to OCRL
宿主	Rabbit
经测试应用	<b>适用于:</b> Flow Cyt (Intra), WB <b>不适用于:</b> ICC/IF, IHC-P or IP
种属反应性	<b>与反应:</b> Human
免疫原	Synthetic peptide. This information is proprietary to Abcam and/or its suppliers.
阳性对照	293T, SH-SY5Y, HeLa and JAR cell lysates. Permeabilized SH-SY5Y cells.
常规说明	<p>Our RabMAb<sup>®</sup> technology is a patented hybridoma-based technology for making rabbit monoclonal antibodies. For details on our patents, please refer to <a href="#">RabMAb<sup>®</sup> patents</a>.</p> <p>The Life Science industry has been in the grips of a reproducibility crisis for a number of years. Abcam is leading the way in addressing this with our range of recombinant monoclonal antibodies and knockout edited cell lines for gold-standard validation. Please check that this product meets your needs before purchasing.</p> <p>If you have any questions, special requirements or concerns, please send us an inquiry and/or contact our Support team ahead of purchase. Recommended alternatives for this product can be found below, along with publications, customer reviews and Q&amp;As</p> <p>Mouse, Rat: We have preliminary internal testing data to indicate this antibody may not react with these species. Please contact us for more information.</p>

### 性能

形式	Liquid
存放说明	Shipped at 4°C. Store at +4°C short term (1-2 weeks). Upon delivery aliquot. Store at -20°C long term. Avoid freeze / thaw cycle.
存储溶液	pH: 7.20 Preservative: 0.01% Sodium azide Constituents: 9% PBS, 40% Glycerol (glycerin, glycerine), 0.05% BSA, 50% Tissue culture supernatant

纯度	Tissue culture supernatant
克隆	单克隆
克隆编号	EP10256
同种型	IgG

## 应用

**The Abpromise guarantee**      **Abpromise™** 承诺保证使用 ab181039 于以下的经测试应用

“应用说明”部分 下显示的仅为推荐的起始稀释度；实际最佳的稀释度/浓度应由使用者检定。

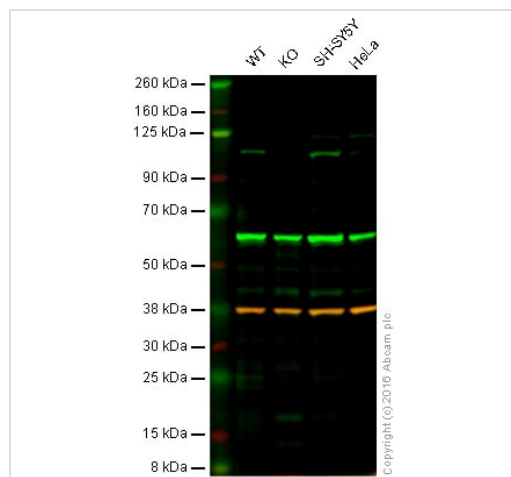
应用	Ab评论	说明
Flow Cyt (Intra)		1/10 - 1/100. <b>ab172730</b> - Rabbit monoclonal IgG, is suitable for use as an isotype control with this antibody.
WB		1/1000 - 1/5000. Predicted molecular weight: 104 kDa.

**应用说明**      Is unsuitable for ICC/IF, IHC-P or IP.

## 靶标

<b>功能</b>	Converts phosphatidylinositol 4,5-bisphosphate to phosphatidylinositol 4-phosphate. Also converts inositol 1,4,5-trisphosphate to inositol 1,4-bisphosphate and inositol 1,3,4,5-tetrakisphosphate to inositol 1,3,4-trisphosphate. May function in lysosomal membrane trafficking by regulating the specific pool of phosphatidylinositol 4,5-bisphosphate that is associated with lysosomes.
<b>组织特异性</b>	Brain, skeletal muscle, heart, kidney, lung, placenta and fibroblasts.
<b>疾病相关</b>	<p>Defects in OCRL are the cause of Lowe oculocerebrorenal syndrome (OCRL) [MIM:309000]. It is an X-linked multisystem disorder affecting eyes, nervous system, and kidney. It is characterized by hydrophthalmia, cataract, mental retardation, vitamin D-resistant rickets, aminoaciduria, and reduced ammonia production by the kidney. Ocular abnormalities include cataract, glaucoma, microphthalmos, and decreased visual acuity. Developmental delay, hypotonia, behavior abnormalities, and areflexia are also present. Renal tubular involvement is characterized by impaired reabsorption of bicarbonate, amino acids, and phosphate. Musculoskeletal abnormalities such as joint hypermobility, dislocated hips, and fractures may develop as consequences of renal tubular acidosis and hypophosphatemia. Cataract is the only significant manifestation in carriers and is detected by slit-lamp examination.</p> <p>Defects in OCRL are the cause of Dent disease type 2 (DD2) [MIM:300555]. DD2 is a renal disease belonging to the 'Dent disease complex', a group of disorders characterized by proximal renal tubular defect, hypercalciuria, nephrocalcinosis, and renal insufficiency. The spectrum of phenotypic features is remarkably similar in the various disorders, except for differences in the severity of bone deformities and renal impairment. Characteristic abnormalities include low-molecular-weight proteinuria and other features of Fanconi syndrome, such as glycosuria, aminoaciduria, and phosphaturia, but typically do not include proximal renal tubular acidosis. Progressive renal failure is common, as are nephrocalcinosis and kidney stones.</p>
<b>序列相似性</b>	Belongs to the inositol-1,4,5-trisphosphate 5-phosphatase type II family. Contains 1 Rho-GAP domain.

图片



Western blot - Anti-OCRL antibody [EP10256] (ab181039)

**Lane 1:** Wild-type HAP1 cell lysate (20 µg)

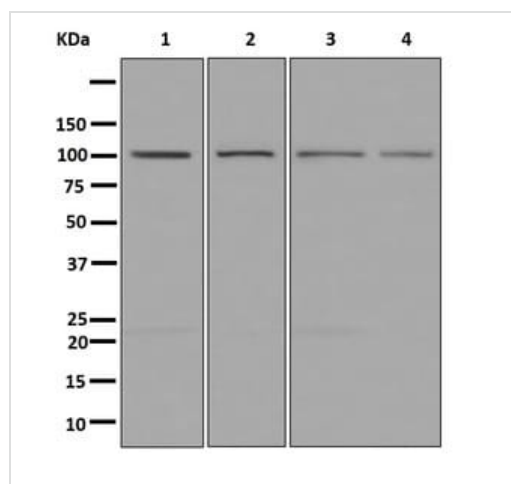
**Lane 2:** INPP5F knockout HAP1 cell lysate (20 µg)

**Lane 3:** SH-SY5Y cell lysate (20 µg)

**Lane 4:** HeLa cell lysate (20 µg)

**Lanes 1 - 4:** Merged signal (red and green). Green - ab181039 observed at 105 kDa. Red - loading control, **ab8245**, observed at 37 kDa.

ab181039 was shown to recognize INPP5F when INPP5F knockout samples were used, along with additional cross-reactive bands. Wild-type and INPP5F knockout samples were subjected to SDS-PAGE. ab181039 and **ab8245** (loading control to GAPDH) were diluted 1/1000 and 1/10 000 respectively and incubated overnight at 4°C. Blots were developed with Goat anti-Rabbit IgG H&L (IRDye® 800CW) preadsorbed **ab216773** and Goat anti-Mouse IgG H&L (IRDye® 680RD) preadsorbed **ab216776** secondary antibodies at 1/10000 dilution for 1 hour at room temperature before imaging.



Western blot - Anti-OCRL antibody [EP10256] (ab181039)

**All lanes :** Anti-OCRL antibody [EP10256] (ab181039) at 1000 µg

**Lane 1 :** 293T cell lysates

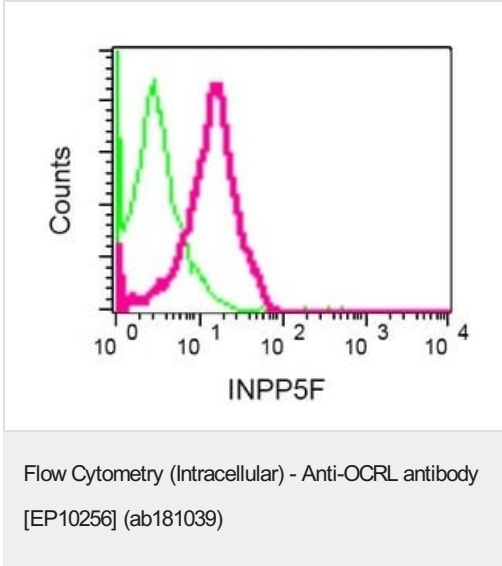
**Lane 2 :** SH-SY5Y cell lysates

**Lane 3 :** HeLa cell lysates

**Lane 4 :** JAR cell lysates

Lysates/proteins at 10 µg per lane.

**Predicted band size:** 104 kDa



Intracellular flow cytometric analysis of permeabilized SH-SY5Y cells using ab181039 at a 1/10 dilution (red) or a rabbit IgG (negative) (green).

**Please note:** All products are "FOR RESEARCH USE ONLY. NOT FOR USE IN DIAGNOSTIC PROCEDURES"

### Our Abpromise to you: Quality guaranteed and expert technical support

- Replacement or refund for products not performing as stated on the datasheet
- Valid for 12 months from date of delivery
- Response to your inquiry within 24 hours
- We provide support in Chinese, English, French, German, Japanese and Spanish
- Extensive multi-media technical resources to help you
- We investigate all quality concerns to ensure our products perform to the highest standards

If the product does not perform as described on this datasheet, we will offer a refund or replacement. For full details of the Abpromise, please visit <https://www.abcam.cn/abpromise> or contact our technical team.

### Terms and conditions

- Guarantee only valid for products bought direct from Abcam or one of our authorized distributors