

Anti-Nuf2 antibody [EPR13018(B)] ab176556

重组 RabMAb

★★★★★ [1 Abreviews](#) [4 References](#) [7 图像](#)

概述

产品名称	Anti-Nuf2抗体[EPR13018(B)]
描述	兔单克隆抗体[EPR13018(B)] to Nuf2
宿主	Rabbit
经测试应用	适用于: Flow Cyt (Intra), WB, ICC/IF 不适用于: IHC-P
种属反应性	与反应: Human
免疫原	Synthetic peptide within Human Nuf2 aa 1-100 (Cysteine residue). The exact sequence is proprietary. Database link: Q9BZD4
阳性对照	293T, A431, HeLa and Human fetal liver lysates; 293T cells.HEK 293 cells.
常规说明	This product is a recombinant monoclonal antibody, which offers several advantages including: <ul style="list-style-type: none">- High batch-to-batch consistency and reproducibility- Improved sensitivity and specificity- Long-term security of supply- Animal-free production For more information see here . Our RabMAb [®] technology is a patented hybridoma-based technology for making rabbit monoclonal antibodies. For details on our patents, please refer to RabMAb[®] patents . Mouse, Rat: We have preliminary internal testing data to indicate this antibody may not react with these species. Please contact us for more information.

性能

形式	Liquid
存放说明	Shipped at 4°C. Store at +4°C short term (1-2 weeks). Upon delivery aliquot. Store at -20°C long term. Avoid freeze / thaw cycle.
存储溶液	Preservative: 0.01% Sodium azide Constituents: PBS, 0.05% BSA, 40% Glycerol (glycerin, glycerine)
纯度	Protein A purified

克隆 单克隆
克隆编号 EPR13018(B)
同种型 IgG

应用

The Abpromise guarantee **Abpromise™**承诺保证使用ab176556于以下的经测试应用

“应用说明”部分下显示的仅为推荐的起始稀释度;实际最佳的稀释度/浓度应由使用者检定。

应用	Ab评论	说明
Flow Cyt (Intra)		1/10 - 1/100. ab172730 - Rabbit monoclonal IgG, is suitable for use as an isotype control with this antibody.
WB		1/1000 - 1/2000. Predicted molecular weight: 54 kDa.
ICC/IF	★★★★★ (1)	1/500 - 1/1000.

应用说明 Is unsuitable for IHC-P.

靶标

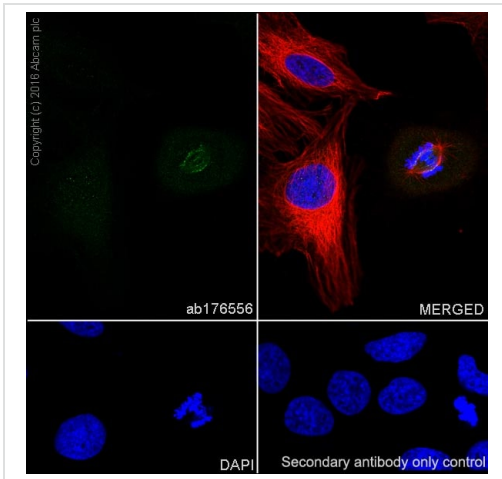
功能 Acts as a component of the essential kinetochore-associated NDC80 complex, which is required for chromosome segregation and spindle checkpoint activity. Required for kinetochore integrity and the organization of stable microtubule binding sites in the outer plate of the kinetochore.

序列相似性 Belongs to the NUF2 family.

翻译后修饰 Can be phosphorylated by AURKA and AURKB.

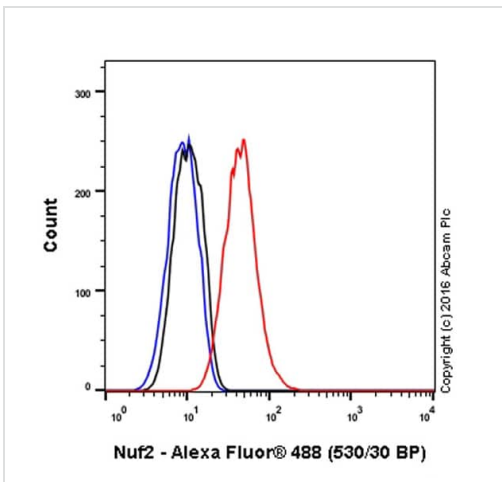
细胞定位 Nucleus. Chromosome > centromere > kinetochore. Localizes to kinetochores from late prophase to anaphase. Localizes specifically to the outer plate of the kinetochore.

图片



Immunocytochemistry/ Immunofluorescence - Anti-Nuf2 antibody [EPR13018(B)] (ab176556)

ab176556 staining Nuf2 in HeLa (human cervix adenocarcinoma) cells by ICC/IF (Immunocytochemistry/immunofluorescence). Cells were fixed with 4% Paraformaldehyde and permeabilized with 0.1% Triton X-100. Samples were incubated with primary antibody at a dilution of 1/1000. A goat anti rabbit IgG (Alexa Fluor® 488) (**ab150077**) was used as the secondary antibody at a dilution of 1/1000. **ab195889** was used as a tubulin counterstain at a dilution of 1/200 and DAPI was used as a nuclear counterstain.

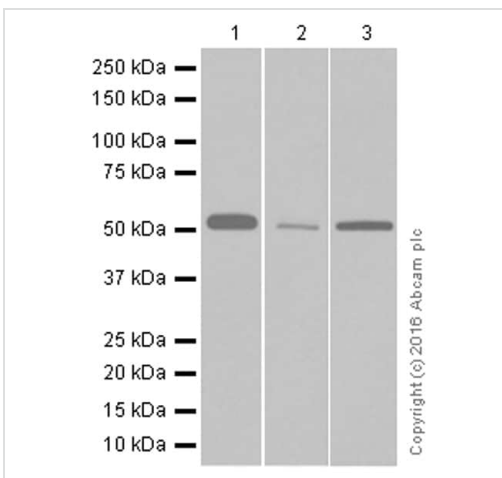


Flow Cytometry (Intracellular) - Anti-Nuf2 antibody [EPR13018(B)] (ab176556)

ab176556 staining Nuf2 in the human cell line 293T (Human epithelial cell line from embryonic kidney) by intracellular flow cytometry. Cells were fixed with 4% paraformaldehyde and the sample was incubated with the primary antibody at a dilution of 1/60. A goat anti rabbit IgG (Alexa Fluor® 488) at a dilution of 1/2000 was used as the secondary antibody.

Isotype control: Rabbit monoclonal IgG (Black)

Unlabelled control: Cell without incubation with primary antibody and secondary antibody (Blue)



Western blot - Anti-Nuf2 antibody [EPR13018(B)] (ab176556)

All lanes : Anti-Nuf2 antibody [EPR13018(B)] (ab176556) at 1/2000 dilution

Lane 1 : HEK-293 (Human epithelial cell line from embryonic kidney) whole cell lysate

Lane 2 : A431 (Human epidermoid carcinoma cell line) whole cell lysate

Lane 3 : HeLa (Human epithelial cell line from cervix adenocarcinoma) whole cell lysate

Lysates/proteins at 20 µg per lane.

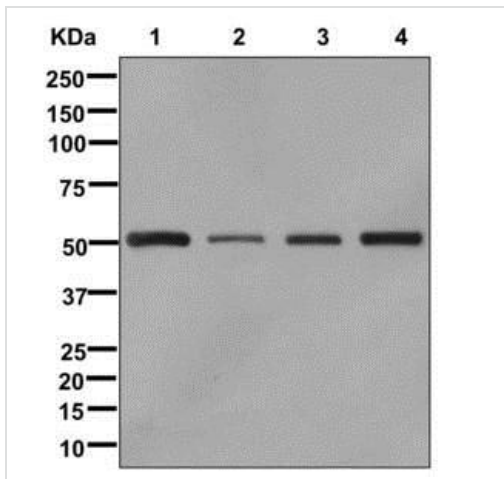
Secondary

All lanes : Anti-Rabbit IgG (HRP), specific to the non-reduced form of IgG at 1/2000 dilution

Predicted band size: 54 kDa

Additional bands at: 54 kDa. We are unsure as to the identity of these extra bands.

Blocking and diluting buffer: 5% NFDM/TBST



Western blot - Anti-Nuf2 antibody [EPR13018(B)] (ab176556)

All lanes : Anti-Nuf2 antibody [EPR13018(B)] (ab176556) at 1/1000 dilution

Lane 1 : 293T cell lysate

Lane 2 : Human fetal liver lysate

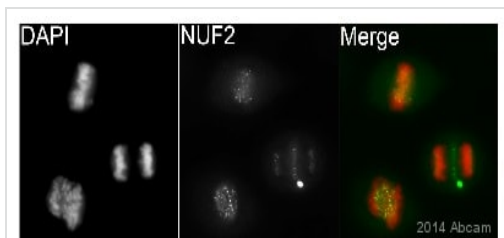
Lane 3 : A431 cell lysate

Lane 4 : HeLa cell lysate

Lysates/proteins at 10 µg per lane.

Developed using the ECL technique.

Predicted band size: 54 kDa

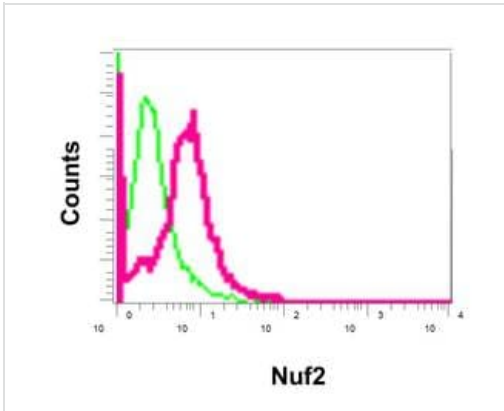


Immunocytochemistry/ Immunofluorescence - Anti-Nuf2 antibody [EPR13018(B)] (ab176556)

This image is courtesy of an Abreview submitted by Kirk McManus

ab176556 staining Nuf2 in HeLa cells by ICC/IF



(Immunocytochemistry/immunofluorescence). Cells were fixed with paraformaldehyde and permeabilized with 0.5% Triton X-100 in PBS. Samples were incubated with primary antibody (1/500 in PBS) for 1 hour at 22°C. **ab150081**, an Alexa Fluor[®] 488-conjugated goat anti-rabbit IgG polyclonal (1/200) was used as the secondary antibody. Counterstained with DAPI.



Intracellular Flow Cytometry analysis of permeabilized 293T cells labeling Nuf2 (red), using ab176556 at a 1/10 dilution, or negative control rabbit IgG (green)

Flow Cytometry (Intracellular) - Anti-Nuf2 antibody [EPR13018(B)] (ab176556)

Why choose a recombinant antibody?

 <p>Research with confidence Consistent and reproducible results</p>	 <p>Long-term and scalable supply Recombinant technology</p>
 <p>Success from the first experiment Confirmed specificity</p>	 <p>Ethical standards compliant Animal-free production</p>

Anti-Nuf2 antibody [EPR13018(B)] (ab176556)

Please note: All products are "FOR RESEARCH USE ONLY. NOT FOR USE IN DIAGNOSTIC PROCEDURES"

Our Abpromise to you: Quality guaranteed and expert technical support

- Replacement or refund for products not performing as stated on the datasheet
- Valid for 12 months from date of delivery
- Response to your inquiry within 24 hours
- We provide support in Chinese, English, French, German, Japanese and Spanish
- Extensive multi-media technical resources to help you
- We investigate all quality concerns to ensure our products perform to the highest standards

If the product does not perform as described on this datasheet, we will offer a refund or replacement. For full details of the Abpromise, please visit <https://www.abcam.cn/abpromise> or contact our technical team.

Terms and conditions

- Guarantee only valid for products bought direct from Abcam or one of our authorized distributors