


Anti-Nucleoporin p62/NUP62 (phospho T269 + S272) antibody ab183480

1 图像

概述

产品名称	Anti-Nucleoporin p62/NUP62 (phospho T269 + S272)抗体
描述	兔多克隆抗体to Nucleoporin p62/NUP62 (phospho T269 + S272)
宿主	Rabbit
经测试应用	适用于: WB
种属反应性	与反应: Human 预测可用于: Non human primates 
免疫原	Synthetic peptide corresponding to Human Nucleoporin p62/NUP62 (phospho T269 + S272). Database link: P37198
阳性对照	Jurkat whole cell lysate (ab7899).
常规说明	<p>The Life Science industry has been in the grips of a reproducibility crisis for a number of years. Abcam is leading the way in addressing this with our range of recombinant monoclonal antibodies and knockout edited cell lines for gold-standard validation. Please check that this product meets your needs before purchasing.</p> <p>If you have any questions, special requirements or concerns, please send us an inquiry and/or contact our Support team ahead of purchase. Recommended alternatives for this product can be found below, along with publications, customer reviews and Q&As</p>

性能

形式	Liquid
存放说明	Shipped at 4°C. Store at +4°C short term (1-2 weeks). Upon delivery aliquot. Store at -20°C long term. Avoid freeze / thaw cycle.
存储溶液	pH: 7.50 Constituents: 0.24% HEPES, 0.88% Sodium chloride, 0.01% BSA, 50% Glycerol
纯度	Immunogen affinity purified
纯化说明	ab183480 is prepared from rabbit serum by affinity purification via sequential chromatography on phospho- and dephosphopeptide affinity columns.
克隆	多克隆
同种型	IgG

应用

The Abpromise guarantee

Abpromise™ 承诺保证使用 ab183480 于以下的经测试应用

“应用说明”部分 下显示的仅为推荐的起始稀释度;实际最佳的稀释度/浓度应由使用者检定。

应用	Ab 评论	说明
WB		1/1000. Predicted molecular weight: 53 kDa.

靶标

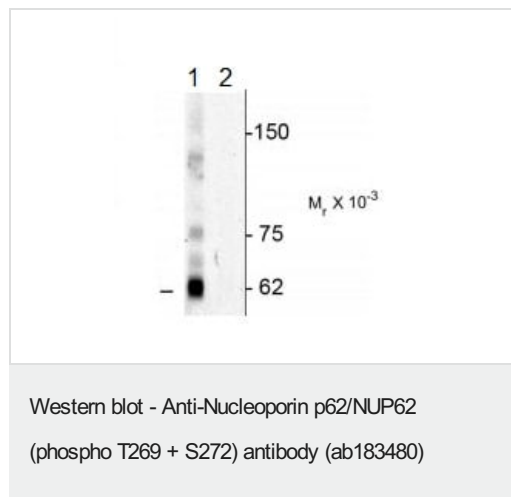
相关性

The nuclear pore complex is a structure that extends across the nuclear envelope and regulates the flow of macromolecules between the cytoplasm and the nucleus. Nucleoporins are the main components of the nuclear pore complex in eukaryotic cells. Nup 62 is localized to the nuclear pore central plug. This protein associates with the importin alpha/beta complex which is involved in the import of proteins containing nuclear localization signals. There are multiple transcript variants of this gene, however, they encode a single protein isoform. This protein undergoes post-translational modifications. It contains about 10 N-acetylglucosamine side chain sites.

细胞定位

Nucleus; nuclear pore complex. Cytoplasm; cytoskeleton; spindle pole. Note: Central region of the nuclear pore, within the transporter. During mitotic cell division, it associates with the poles of the mitotic spindle.

图片



All lanes : Anti-Nucleoporin p62/NUP62 (phospho T269 + S272) antibody (ab183480) at 1/1000 dilution

Lane 1 : Jurkat cell lysate

Lane 2 : Jurkat cell lysate with immunizing phosphopeptide

Predicted band size: 53 kDa

Please note: All products are "FOR RESEARCH USE ONLY. NOT FOR USE IN DIAGNOSTIC PROCEDURES"

Our Abpromise to you: Quality guaranteed and expert technical support

- Replacement or refund for products not performing as stated on the datasheet
- Valid for 12 months from date of delivery

- Response to your inquiry within 24 hours
- We provide support in Chinese, English, French, German, Japanese and Spanish
- Extensive multi-media technical resources to help you
- We investigate all quality concerns to ensure our products perform to the highest standards

If the product does not perform as described on this datasheet, we will offer a refund or replacement. For full details of the Abpromise, please visit <https://www.abcam.cn/abpromise> or contact our technical team.

Terms and conditions

- Guarantee only valid for products bought direct from Abcam or one of our authorized distributors