


Anti-Nucleophosmin antibody [SP236] - BSA and Azide free ab245744

重组 RabMAb

11 图像

概述

产品名称	Anti-Nucleophosmin抗体[SP236] - BSA and Azide free
描述	兔单克隆抗体[SP236] to Nucleophosmin - BSA and Azide free
宿主	Rabbit
经测试应用	适用于: Flow Cyt (Intra), ICC/IF, IHC-P, WB
种属反应性	与反应: Mouse, Rat, Human 预测可用于: Chicken, Cow 
免疫原	Synthetic peptide. This information is proprietary to Abcam and/or its suppliers.
阳性对照	IHC-P: Human tonsil, Human skin, Mouse colon, and Rat spleen tissue; Flow Cyt (intra): HeLa and 3T3-L1 cells; ICC: 3T3-L1, HeLa and PC-12 cells.
常规说明	<p>ab245744 is the carrier-free version of ab183340.</p> <p>Our carrier-free antibodies are typically supplied in a PBS-only formulation, purified and free of BSA, sodium azide and glycerol. The carrier-free buffer and high concentration allow for increased conjugation efficiency.</p> <p>This conjugation-ready format is designed for use with fluorochromes, metal isotopes, oligonucleotides, and enzymes, which makes them ideal for antibody labelling, functional and cell-based assays, flow-based assays (e.g. mass cytometry) and Multiplex Imaging applications.</p> <p>Use our conjugation kits for antibody conjugates that are ready-to-use in as little as 20 minutes with <1 minute hands-on-time and 100% antibody recovery: available for fluorescent dyes, HRP, biotin and gold.</p> <p>This product is compatible with the Maxpar[®] Antibody Labeling Kit from Fluidigm, without the need for antibody preparation. Maxpar[®] is a trademark of Fluidigm Canada Inc.</p> <p>This product is a recombinant monoclonal antibody, which offers several advantages including:</p> <ul style="list-style-type: none"> - High batch-to-batch consistency and reproducibility - Improved sensitivity and specificity - Long-term security of supply - Animal-free production <p>For more information see here.</p> <p>Our RabMAb[®] technology is a patented hybridoma-based technology for making rabbit</p>

monoclonal antibodies. For details on our patents, please refer to [RabMAb® patents](#).

This product is FOR RESEARCH USE ONLY. For commercial use, please contact partnerships@abcam.com.

性能

形式	Liquid
存放说明	Shipped at 4°C. Store at +4°C. Do Not Freeze.
存储溶液	pH: 7.20 Constituent: PBS
无载体	是
纯度	Protein A/G purified
纯化说明	Purified from TCS by protein A/G.
克隆	单克隆
克隆编号	SP236
同种型	IgG

应用

The Abpromise guarantee **Abpromise™**承诺保证使用ab245744于以下的经测试应用

“应用说明”部分下显示的仅为推荐的起始稀释度;实际最佳的稀释度/浓度应由使用者检定。

应用	Ab评论	说明
Flow Cyt (Intra)		Use at an assay dependent concentration. ab172730 - Rabbit monoclonal IgG, is suitable for use as an isotype control with this antibody.
ICC/IF		Use at an assay dependent concentration.
IHC-P		Use at an assay dependent concentration. Boil tissue section in EDTA buffer, pH 8.0 for 10 min followed by cooling at room temperature for 20 min.
WB		Use at an assay dependent concentration. Predicted molecular weight: 33 kDa.

靶标

功能 Involved in diverse cellular processes such as ribosome biogenesis, centrosome duplication, protein chaperoning, histone assembly, cell proliferation, and regulation of tumor suppressors p53/TP53 and ARF. Binds ribosome presumably to drive ribosome nuclear export. Associated with nucleolar ribonucleoprotein structures and bind single-stranded nucleic acids. Acts as a chaperonin for the core histones H3, H2B and H4. Stimulates APEX1 endonuclease activity on

apurinic/aprimidinic (AP) double-stranded DNA but inhibits APEX1 endonuclease activity on AP single-stranded RNA. May exert a control of APEX1 endonuclease activity within nucleoli devoted to repair AP on rDNA and the removal of oxidized rRNA molecules. In concert with BRCA2, regulates centrosome duplication. Regulates centriole duplication: phosphorylation by PLK2 is able to trigger centriole replication. Negatively regulates the activation of EIF2AK2/PKR and suppresses apoptosis through inhibition of EIF2AK2/PKR autophosphorylation. Antagonizes the inhibitory effect of ATF5 on cell proliferation and relieves ATF5-induced G2/M blockade (PubMed:22528486).

疾病相关

A chromosomal aberration involving NPM1 is found in a form of non-Hodgkin lymphoma. Translocation t(2;5)(p23;q35) with ALK. The resulting chimeric NPM1-ALK protein homodimerize and the kinase becomes constitutively activated.

A chromosomal aberration involving NPM1 is found in a form of acute promyelocytic leukemia. Translocation t(5;17)(q32;q11) with RARA.

A chromosomal aberration involving NPM1 is a cause of myelodysplastic syndrome (MDS). Translocation t(3;5)(q25.1;q34) with MLF1.

Defects in NPM1 are associated with acute myelogenous leukemia (AML). Mutations in exon 12 affecting the C-terminus of the protein are associated with an aberrant cytoplasmic location.

序列相似性

Belongs to the nucleoplasmin family.

翻译后修饰

Acetylated at C-terminal lysine residues, thereby increasing affinity to histones.

ADP-ribosylated.

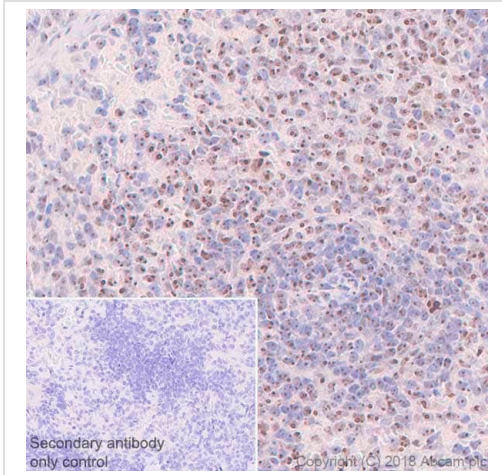
Phosphorylated at Ser-4 by PLK1 and PLK2. Phosphorylation at Ser-4 by PLK2 in S phase is required for centriole duplication and is sufficient to trigger centriole replication. Phosphorylation at Ser-4 by PLK1 takes place during mitosis. Phosphorylated by CDK2 at Ser-125 and Thr-199. Phosphorylation at Thr-199 may trigger initiation of centrosome duplication. Phosphorylated by CDK1 at Thr-199, Thr-219, Thr-234 and Thr-237 during cell mitosis. When these four sites are phosphorylated, RNA-binding activity seem to be abolished. May be phosphorylated at Ser-70 by NEK2. The Thr-199 phosphorylated form has higher affinity for ROCK2. CDK6 triggers Thr-199 phosphorylation when complexed to Kaposi's sarcoma herpesvirus (KSHV) V-cyclin, leading to viral reactivation by reducing viral LANA levels.

Sumoylated by ARF.

细胞定位

Nucleus, nucleolus. Nucleus, nucleoplasm. Cytoplasm, cytoskeleton, microtubule organizing center, centrosome. Generally nucleolar, but is translocated to the nucleoplasm in case of serum starvation or treatment with anticancer drugs. Has been found in the cytoplasm in patients with primary acute myelogenous leukemia (AML), but not with secondary AML. Can shuttle between cytoplasm and nucleus. Co-localizes with the methylated form of RPS10 in the granular component (GC) region of the nucleolus. Colocalized with nucleolin and APEX1 in nucleoli. Isoform 1 of NEK2 is required for its localization to the centrosome during mitosis.

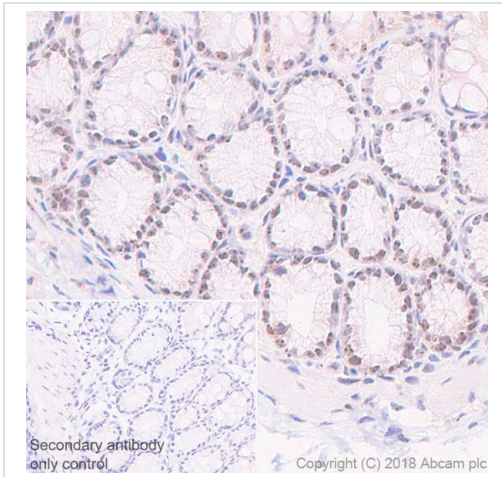
图片



Immunohistochemistry (Formalin/PFA-fixed paraffin-embedded sections) - Anti-Nucleophosmin antibody [SP236] - BSA and Azide free (ab245744)

Immunohistochemistry (Formalin/PFA-fixed paraffin-embedded sections) analysis of Rat spleen tissue sections labeling Nucleophosmin with **ab183340** at 1/100 dilution (2.51 µg/ml). Heat mediated antigen retrieval was performed Heat mediated antigen retrieval with sodium citrate buffer (pH 6.0, epitope retrieval solution 1) for 30 mins. Rabbit specific IHC polymer detection kit HRP/DAB (**ab209101**) was used as the secondary antibody. Negative control: PBS instead of the primary antibody. Hematoxylin was used as a counterstain.

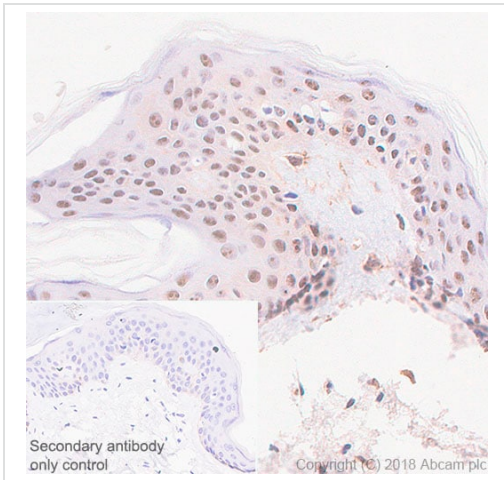
This data was developed using the same antibody clone in a different buffer formulation containing PBS, BSA, glycerol, and sodium azide (**ab183340**)



Immunohistochemistry (Formalin/PFA-fixed paraffin-embedded sections) - Anti-Nucleophosmin antibody [SP236] - BSA and Azide free (ab245744)

Immunohistochemistry (Formalin/PFA-fixed paraffin-embedded sections) analysis of Mouse colon tissue sections labeling Nucleophosmin with **ab183340** at 1/100 dilution (2.51 µg/ml). Heat mediated antigen retrieval was performed Heat mediated antigen retrieval with sodium citrate buffer (pH 6.0, epitope retrieval solution 1) for 30 mins. Rabbit specific IHC polymer detection kit HRP/DAB (**ab209101**) was used as the secondary antibody. Negative control: PBS instead of the primary antibody. Hematoxylin was used as a counterstain.

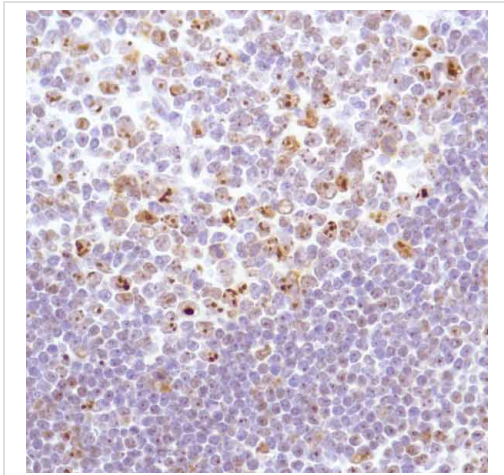
This data was developed using the same antibody clone in a different buffer formulation containing PBS, BSA, glycerol, and sodium azide (**ab183340**)



Immunohistochemistry (Formalin/PFA-fixed paraffin-embedded sections) - Anti-Nucleophosmin antibody [SP236] - BSA and Azide free (ab245744)

Immunohistochemistry (Formalin/PFA-fixed paraffin-embedded sections) analysis of Human skin tissue sections labeling Nucleophosmin with **ab183340** at 1/100 dilution (2.51 µg/ml). Heat mediated antigen retrieval was performed Heat mediated antigen retrieval with sodium citrate buffer (pH 6.0, epitope retrieval solution 1) for 30 mins. Rabbit specific IHC polymer detection kit HRP/DAB (**ab209101**) was used as the secondary antibody. Negative control: PBS instead of the primary antibody. Hematoxylin was used as a counterstain.

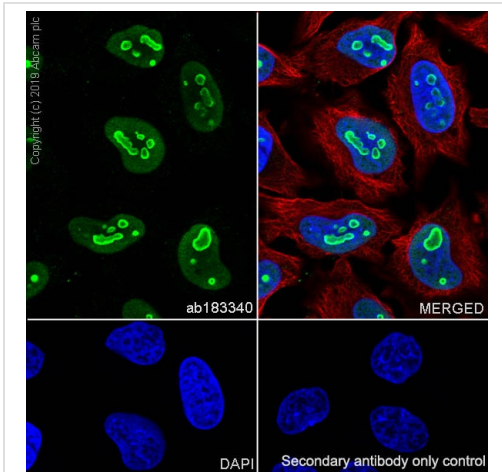
This data was developed using the same antibody clone in a different buffer formulation containing PBS, BSA, glycerol, and sodium azide (**ab183340**)



Immunohistochemistry (Formalin/PFA-fixed paraffin-embedded sections) - Anti-Nucleophosmin antibody [SP236] - BSA and Azide free (ab245744)

Immunohistochemical analysis of paraffin-embedded Human tonsil tissue, labeling Nucleophosmin with **ab183340** at a 1/100 dilution.

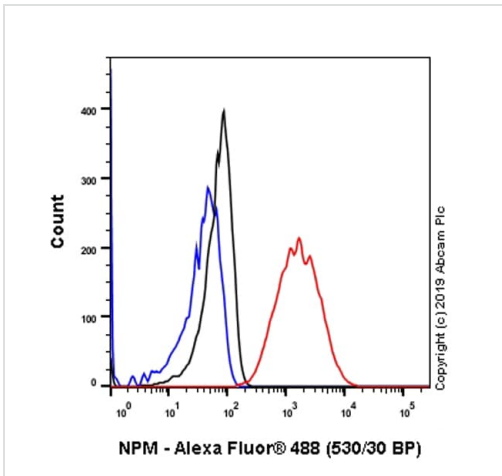
This data was developed using the same antibody clone in a different buffer formulation containing PBS, BSA and sodium azide (**ab183340**).



Immunocytochemistry/ Immunofluorescence - Anti-Nucleophosmin antibody [SP236] - BSA and Azide free (ab245744)

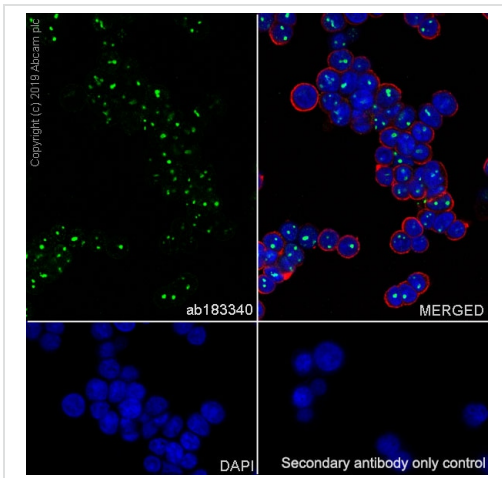
Immunocytochemistry/ Immunofluorescence analysis of HeLa (human cervix adenocarcinoma epithelial cell) cells labeling Nucleophosmin with purified **ab183340** at 1/100 (2.5µg/ml). Cells were fixed in 4% paraformaldehyde and permeabilized with 0.1% Triton X-100. Cells were counterstained with **ab195889** Anti-alpha Tubulin antibody [DM1A] - Microtubule Marker (Alexa Fluor® 594) 1/200 (2.5 µg/ml). Goat anti rabbit IgG (Alexa Fluor® 488, **ab150077**) was used as the secondary antibody at 1/1000 (2 µg/ml) dilution. DAPI was used as nuclear counterstain. PBS instead of the primary antibody was used as the secondary antibody only control.

This data was developed using the same antibody clone in a different buffer formulation containing PBS, BSA, glycerol, and sodium azide (**ab183340**).



Flow Cytometry (Intracellular) - Anti-Nucleophosmin antibody [SP236] - BSA and Azide free (ab245744)

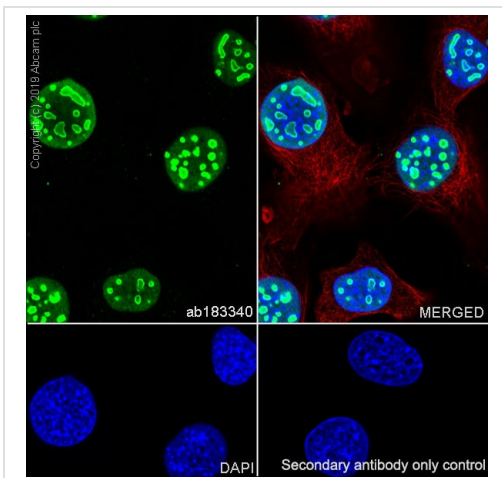
Intracellular Flow Cytometry analysis of HeLa (human cervix adenocarcinoma epithelial cell) labeling Nucleophosmin with purified **ab183340** at 1/200 dilution (1.255µg/ml) (red). Cells were fixed with 4% paraformaldehyde and permeabilized with 90% methanol. Goat anti rabbit IgG (Alexa Fluor® 488, **ab150077**) at 1/2000 dilution was used as a secondary antibody. Isotype control - Rabbit monoclonal IgG (**ab172730**) / Black. Unlabeled control - Unlabelled cells / blue. This data was developed using the same antibody clone in a different buffer formulation containing PBS, BSA, glycerol, and sodium azide (**ab183340**).



Immunocytochemistry/ Immunofluorescence - Anti-Nucleophosmin antibody [SP236] - BSA and Azide free (ab245744)

Immunocytochemistry/ Immunofluorescence analysis of PC-12 (rat adrenal gland pheochromocytoma) cells labeling Nucleophosmin with purified **ab183340** at 1/100(2.5µg/ml). Cells were fixed in 100% Methanol. Cells were counterstained with Ab195889 Anti-alpha Tubulin antibody [DM1A] - Microtubule Marker (Alexa Fluor[®] 594) 1/200 (2.5 µg/ml). Goat anti rabbit IgG (Alexa Fluor[®] 488, **ab150077**) was used as the secondary antibody at 1/1000 (2 µg/ml) dilution. DAPI was used as nuclear counterstain. PBS instead of the primary antibody was used as the secondary antibody only control.

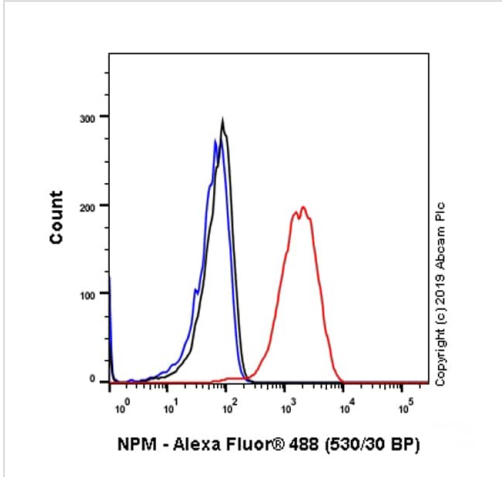
This data was developed using the same antibody clone in a different buffer formulation containing PBS, BSA, glycerol, and sodium azide (**ab183340**).



Immunocytochemistry/ Immunofluorescence - Anti-Nucleophosmin antibody [SP236] - BSA and Azide free (ab245744)

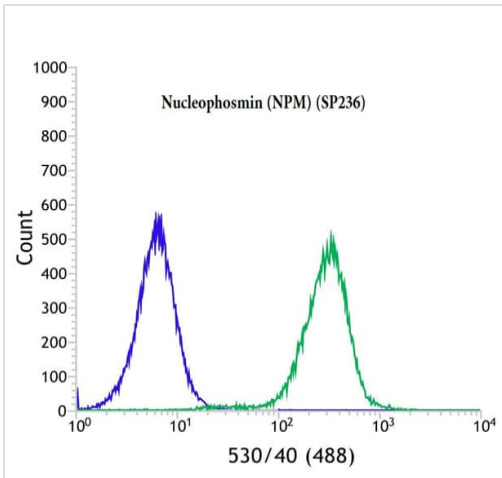
Immunocytochemistry/ Immunofluorescence analysis of 3T3-L1 (mouse embryonic fibroblast) cells labeling Nucleophosmin with purified **ab183340** at 1/100 (2.5µg/ml). Cells were fixed in 4% paraformaldehyde and permeabilized with 0.1% Triton X-100. Cells were counterstained with **ab195889** Anti-alpha Tubulin antibody [DM1A] - Microtubule Marker (Alexa Fluor[®] 594) 1/200 (2.5 µg/ml). Goat anti rabbit IgG (Alexa Fluor[®] 488, **ab150077**) was used as the secondary antibody at 1/1000 (2 µg/ml) dilution. DAPI was used as nuclear counterstain. PBS instead of the primary antibody was used as the secondary antibody only control.

This data was developed using the same antibody clone in a different buffer formulation containing PBS, BSA, glycerol, and sodium azide (**ab183340**).



Flow Cytometry (Intracellular) - Anti-Nucleophosmin antibody [SP236] - BSA and Azide free (ab245744)

Intracellular Flow Cytometry analysis of 3T3-L1 (Mouse embryonic fibroblast) labeling Nucleophosmin with purified **ab183340** at 1/200 dilution (1.255µg/ml) (red). Cells were fixed with 4% paraformaldehyde and permeabilised with 90% methanol. Goat anti rabbit IgG (Alexa Fluor® 488, **ab150077**) at 1/2000 dilution was used as a secondary antibody. Isotype control -Rabbit monoclonal IgG (**ab172730**) / Black. Unlabeled control -Unlabelled cells / blue. This data was developed using the same antibody clone in a different buffer formulation containing PBS, BSA, glycerol, and sodium azide (**ab183340**).



Flow Cytometry (Intracellular) - Anti-Nucleophosmin antibody [SP236] - BSA and Azide free (ab245744)

Intracellular flow cytometric analysis of Jurkat cells, labeling Nucleophosmin with **ab183340** diluted 1/400 (green), compared with a negative control of anti-rabbit IgG (blue).

This data was developed using the same antibody clone in a different buffer formulation containing PBS, BSA and sodium azide (**ab183340**).

Why choose a recombinant antibody?



Research with confidence
Consistent and reproducible results



Long-term and scalable supply
Recombinant technology



Success from the first experiment
Confirmed specificity



Ethical standards compliant
Animal-free production

Anti-Nucleophosmin antibody [SP236] - BSA and Azide free (ab245744)

Please note: All products are "FOR RESEARCH USE ONLY. NOT FOR USE IN DIAGNOSTIC PROCEDURES"

Our Abpromise to you: Quality guaranteed and expert technical support

- Replacement or refund for products not performing as stated on the datasheet
- Valid for 12 months from date of delivery
- Response to your inquiry within 24 hours
- We provide support in Chinese, English, French, German, Japanese and Spanish
- Extensive multi-media technical resources to help you
- We investigate all quality concerns to ensure our products perform to the highest standards

If the product does not perform as described on this datasheet, we will offer a refund or replacement. For full details of the Abpromise, please visit <https://www.abcam.cn/abpromise> or contact our technical team.

Terms and conditions

- Guarantee only valid for products bought direct from Abcam or one of our authorized distributors