

Anti-NPR-C antibody [EPR12716] - C-terminal ab177954

重组 RabMAb

4 References **7 图像**

概述

产品名称	Anti-NPR-C抗体[EPR12716] - C-terminal
描述	兔单克隆抗体[EPR12716] to NPR-C - C-terminal
宿主	Rabbit
经测试应用	适用于: Flow Cyt (Intra), WB 不适用于: IP
种属反应性	与反应: Mouse, Rat, Human
免疫原	Synthetic peptide. This information is proprietary to Abcam and/or its suppliers.
阳性对照	Human fetal kidney, Human placenta, and HeLa lysates; HeLa cells.
常规说明	This product is a recombinant monoclonal antibody, which offers several advantages including: <ul style="list-style-type: none"> - High batch-to-batch consistency and reproducibility - Improved sensitivity and specificity - Long-term security of supply - Animal-free production For more information see here . Our RabMAb [®] technology is a patented hybridoma-based technology for making rabbit monoclonal antibodies. For details on our patents, please refer to RabMAb[®] patents .

性能

形式	Liquid
存放说明	Shipped at 4°C. Store at +4°C short term (1-2 weeks). Upon delivery aliquot. Store at -20°C long term. Avoid freeze / thaw cycle.
存储溶液	Preservative: 0.01% Sodium azide Constituents: 40% Glycerol (glycerin, glycerine), 0.05% BSA, 59% PBS
纯度	Protein A purified
克隆	单克隆
克隆编号	EPR12716
同种型	IgG

应用

The Abpromise guarantee

Abpromise™ 承诺保证使用ab177954于以下的经测试应用

“应用说明”部分 下显示的仅为推荐的起始稀释度;实际最佳的稀释度/浓度应由使用者检定。

应用	Ab评论	说明
Flow Cyt (Intra)		1/100 - 1/500. ab172730 - Rabbit monoclonal IgG, is suitable for use as an isotype control with this antibody.
WB		1/1000 - 1/10000. Detects a band of approximately 70 kDa (predicted molecular weight: 60 kDa).

应用说明

Is unsuitable for IP.

靶标

功能

Receptor for the natriuretic peptide hormones, binding with similar affinities atrial natriuretic peptide NPPA/ANP, brain natriuretic peptide NPPB/BNP, and C-type natriuretic peptide NPPC/CNP. May function as a clearance receptor for NPPA, NPPB and NPPC, regulating their local concentrations and effects. May regulate diuresis, blood pressure and skeletal development. Does not have guanylate cyclase activity.

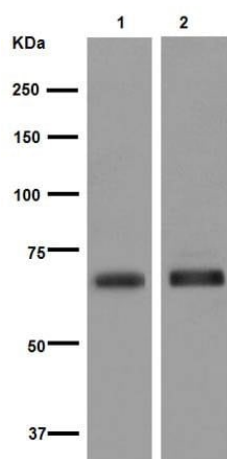
序列相似性

Belongs to the ANF receptor family.

细胞定位

Membrane.

图片



Western blot - Anti-NPR-C antibody [EPR12716] - C-terminal (ab177954)

All lanes : Anti-NPR-C antibody [EPR12716] - C-terminal (ab177954) at 1/1000 dilution (purified)

All lanes : Human tissue lysate

Lysates/proteins at 1/10 dilution per lane.

Secondary

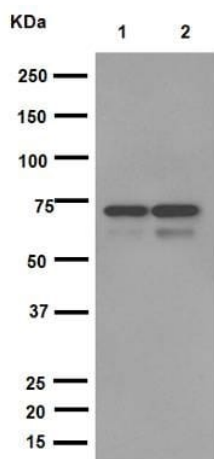
All lanes : HRP anti-rabbit, specific to the non-reduced form of IgG at 1/1000 dilution

Predicted band size: 60 kDa

Observed band size: 70 kDa

Blocking buffer: 5% NFDM/TBST

Dilution buffer: 5% NFDM/TBST



Western blot - Anti-NPR-C antibody [EPR12716] - C-terminal (ab177954)

All lanes : Anti-NPR-C antibody [EPR12716] - C-terminal (ab177954) at 1/7000 dilution (purified)

Lane 1 : Mouse kidney tissue lysate

Lane 2 : Rat kidney tissue lysate

Lysates/proteins at 20 µg per lane.

Secondary

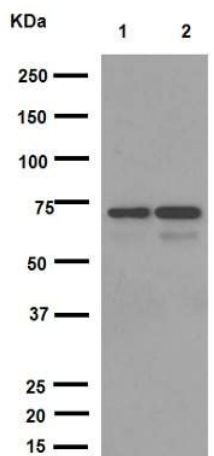
All lanes : HRP goat anti-rabbit (H+L) at 1/1000 dilution

Predicted band size: 60 kDa

Observed band size: 70 kDa

Blocking buffer: 5% NFDM/TBST

Dilution buffer: 5% NFDM/TBST



Western blot - Anti-NPR-C antibody [EPR12716] - C-terminal (ab177954)

All lanes : Anti-NPR-C antibody [EPR12716] - C-terminal (ab177954) at 1/1000 dilution (unpurified)

Lane 1 : Mouse kidney tissue lysate

Lane 2 : Rat kidney tissue lysate

Lysates/proteins at 20 µg per lane.

Secondary

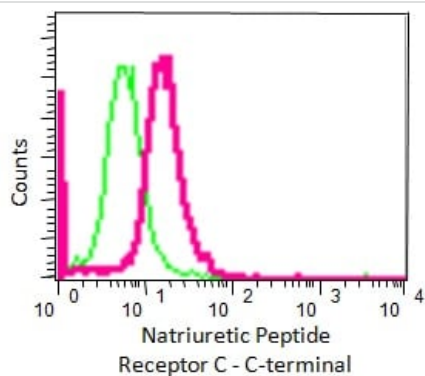
All lanes : HRP goat anti-rabbit (H+L) at 1/1000 dilution

Predicted band size: 60 kDa

Observed band size: 70 kDa

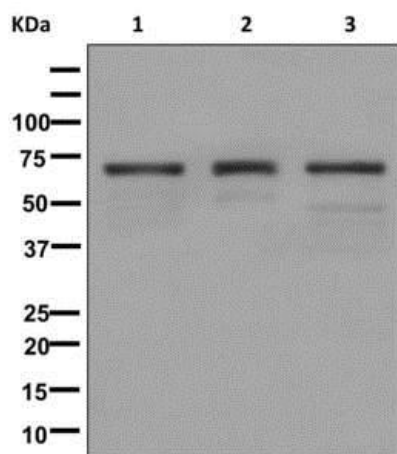
Blocking buffer: 5% NFDM/TBST

Dilution buffer: 5% NFDM/TBST



Flow Cytometry (Intracellular) - Anti-NPR-C antibody
[EPR12716] - C-terminal (ab177954)

Overlay histogram showing HeLa cells fixed in 2% PFA and stained with purified ab177954 at a dilution of 1 in 270 (pink line). The secondary antibody used was FITC goat anti-rabbit at a dilution of 1 in 150. Rabbit monoclonal IgG was used as an isotype control.



Western blot - Anti-NPR-C antibody [EPR12716] -
C-terminal (ab177954)

All lanes : Anti-NPR-C antibody [EPR12716] - C-terminal
(ab177954) at 1/1000 dilution (unpurified)

Lane 1 : Human fetal kidney tissue lysate

Lane 2 : Human placenta lysate

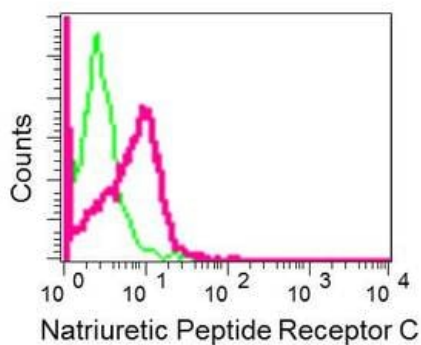
Lane 3 : HeLa cell lysate

Lysates/proteins at 10 µg per lane.

Secondary

All lanes : Goat anti-rabbit HRP at 1/2000 dilution

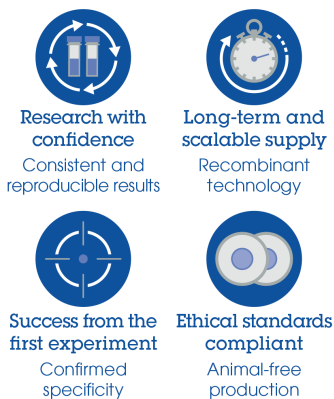
Predicted band size: 60 kDa



Intracellular flow cytometric analysis of permeabilized HeLa cells labeling NPR-C with unpurified ab177954 at 1/100 dilution (red) or a rabbit IgG (negative) (green).

Flow Cytometry (Intracellular) - Anti-NPR-C antibody
[EPR12716] - C-terminal (ab177954)

Why choose a recombinant antibody?



Anti-NPR-C antibody [EPR12716] - C-terminal
(ab177954)

Please note: All products are "FOR RESEARCH USE ONLY. NOT FOR USE IN DIAGNOSTIC PROCEDURES"

Our Abpromise to you: Quality guaranteed and expert technical support

- Replacement or refund for products not performing as stated on the datasheet
- Valid for 12 months from date of delivery
- Response to your inquiry within 24 hours
- We provide support in Chinese, English, French, German, Japanese and Spanish
- Extensive multi-media technical resources to help you
- We investigate all quality concerns to ensure our products perform to the highest standards

If the product does not perform as described on this datasheet, we will offer a refund or replacement. For full details of the Abpromise, please visit <https://www.abcam.cn/abpromise> or contact our technical team.

Terms and conditions

- Guarantee only valid for products bought direct from Abcam or one of our authorized distributors