

### Anti-NOTCH4 antibody [EPNCIR101B] ab166605

**重组** RabMAb

**3 References**   **3 图像**

#### 概述

产品名称	Anti-NOTCH4抗体[EPNCIR101B]
描述	兔单克隆抗体[EPNCIR101B] to NOTCH4
宿主	Rabbit
特异性	Data from our lab shows that this antibody does not work in WB on Human samples but does react with endogenous mouse protein. Other species have not been tested.
经测试应用	<b>适用于:</b> Flow Cyt (Intra), WB <b>不适用于:</b> ICC/IF, IHC-P or IP
种属反应性	<b>与反应:</b> Mouse, Human
免疫原	Synthetic peptide within Mouse NOTCH4 aa 1900-2000. The exact sequence is proprietary.
阳性对照	Mouse lung lysate and Jurkat cells
常规说明	<p>This antibody was developed as part of a collaboration between the National Cancer Institutes Center for Cancer Research and the lab of Robert Callahan. <b><u><a href="#">View antibodies from NCI Center for Cancer Research Collaboration.</a></u></b></p> <p>This product is a recombinant monoclonal antibody, which offers several advantages including:</p> <ul style="list-style-type: none"><li>- High batch-to-batch consistency and reproducibility</li><li>- Improved sensitivity and specificity</li><li>- Long-term security of supply</li><li>- Animal-free production</li></ul> <p>For more information <b><u><a href="#">see here.</a></u></b></p> <p>Our RabMAb<sup>®</sup> technology is a patented hybridoma-based technology for making rabbit monoclonal antibodies. For details on our patents, please refer to <b><u><a href="#">RabMAb<sup>®</sup> patents.</a></u></b></p> <p>Rat: We have preliminary internal testing data to indicate this antibody may not react with this species. Please contact us for more information.</p>

#### 性能

形式	Liquid
存放说明	Shipped at 4°C. Upon delivery aliquot and store at -20°C. Avoid freeze / thaw cycles.
存储溶液	pH: 7.2

	Preservative: 0.01% Sodium azide Constituents: 9% PBS, 40% Glycerol (glycerin, glycerine), 0.05% BSA, 50% Tissue culture supernatant
纯度	Tissue culture supernatant
克隆	单克隆
克隆编号	EPNCIR101B
同种型	IgG

## 应用

**The Abpromise guarantee** **Abpromise™** 承诺保证使用ab166605于以下的经测试应用

“应用说明”部分 下显示的仅为推荐的起始稀释度;实际最佳的稀释度/浓度应由使用者检定。

应用	Ab评论	说明
Flow Cyt (Intra)		1/100 - 1/500. <b>ab172730</b> - Rabbit monoclonal IgG, is suitable for use as an isotype control with this antibody.
WB		1/100 - 1/500. Predicted molecular weight: 210 kDa. Data from our lab shows that this antibody does not work in WB on Human samples but does react with endogenous mouse protein. Other species have not been tested.

**应用说明** Is unsuitable for ICC/IF,IHC-P or IP.

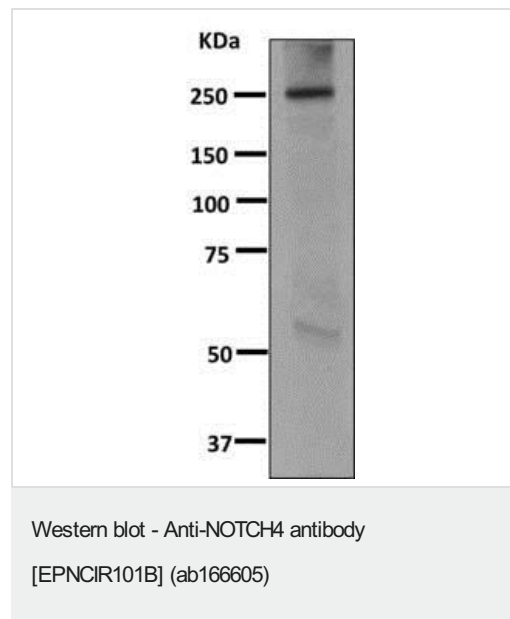
## 靶标

功能	Functions as a receptor for membrane-bound ligands Jagged1, Jagged2 and Delta1 to regulate cell-fate determination. Upon ligand activation through the released notch intracellular domain (NICD) it forms a transcriptional activator complex with RBPJ/RBPSUH and activates genes of the enhancer of split locus. Affects the implementation of differentiation, proliferation and apoptotic programs. May regulate branching morphogenesis in the developing vascular system.
组织特异性	Highly expressed in the heart, moderately in the lung and placenta and at low levels in the liver, skeletal muscle, kidney, pancreas, spleen, lymph node, thymus, bone marrow and fetal liver. No expression was seen in adult brain or peripheral blood leukocytes.
序列相似性	Belongs to the NOTCH family. Contains 5 ANK repeats. Contains 28 EGF-like domains. Contains 3 LNR (Lin/Notch) repeats.
翻译后修饰	Synthesized in the endoplasmic reticulum as an inactive form which is proteolytically cleaved by a furin-like convertase in the trans-Golgi network before it reaches the plasma membrane to yield an active, ligand-accessible form. Cleavage results in a C-terminal fragment N(TM) and a N-terminal fragment N(EC). Following ligand binding, it is cleaved by TNF-alpha converting enzyme (TACE) to yield a membrane-associated intermediate fragment called notch extracellular truncation (NEXT). This fragment is then cleaved by presenilin dependent gamma-secretase to release a notch-derived peptide containing the intracellular domain (NICD) from the membrane. Phosphorylated.

## 细胞定位

Cell membrane and Nucleus. Following proteolytical processing NICD is translocated to the nucleus.

## 图片

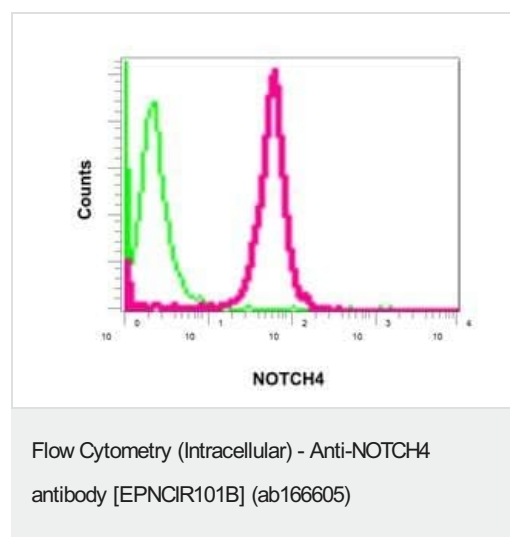


Anti-NOTCH4 antibody [EPNCIR101B] (ab166605) at 1/100 dilution + Mouse lung lysate at 10 µg

### Secondary

HRP labelled goat anti-rabbit at 1/2000 dilution

**Predicted band size:** 210 kDa



Intracellular flow cytometrical analysis of permeabilized Jurkat cells with ab166605 antibody at a dilution of 1/100 (red) compared to a rabbit IgG negative (green).

### Why choose a recombinant antibody?



**Research with confidence**  
Consistent and reproducible results



**Long-term and scalable supply**  
Recombinant technology



**Success from the first experiment**  
Confirmed specificity



**Ethical standards compliant**  
Animal-free production

Anti-NOTCH4 antibody [EPNCIR101B] (ab166605)

**Please note:** All products are "FOR RESEARCH USE ONLY. NOT FOR USE IN DIAGNOSTIC PROCEDURES"

### Our Abpromise to you: Quality guaranteed and expert technical support

---

- Replacement or refund for products not performing as stated on the datasheet
- Valid for 12 months from date of delivery
- Response to your inquiry within 24 hours
- We provide support in Chinese, English, French, German, Japanese and Spanish
- Extensive multi-media technical resources to help you
- We investigate all quality concerns to ensure our products perform to the highest standards

If the product does not perform as described on this datasheet, we will offer a refund or replacement. For full details of the Abpromise, please visit <https://www.abcam.cn/abpromise> or contact our technical team.

### Terms and conditions

---

- Guarantee only valid for products bought direct from Abcam or one of our authorized distributors