

### Anti-NLP1 antibody [EPR16545] ab192609

**重组** RabMAb

★★★★★ **1 Abreviews** 9 图像

#### 概述

产品名称	Anti-NLP1抗体[EPR16545]
描述	兔单克隆抗体[EPR16545] to NLP1
宿主	Rabbit
经测试应用	<b>适用于:</b> WB, IHC-P, ICC/IF, IP
种属反应性	<b>与反应:</b> Mouse, Rat, Human
免疫原	Recombinant fragment. This information is proprietary to Abcam and/or its suppliers.
阳性对照	293, K562, HeLa, PC12, NIH 3T3, C6, RAW 264.7 cell lysates, Human fetal liver, Mouse brain, heart, kidney and spleen, Rat heart and brain lysates; Human kidney clear cell carcinoma, tonsil and Mouse lung tissues; HeLa cells.
常规说明	<p>This product is a recombinant monoclonal antibody, which offers several advantages including:</p> <ul style="list-style-type: none"> <li>- High batch-to-batch consistency and reproducibility</li> <li>- Improved sensitivity and specificity</li> <li>- Long-term security of supply</li> <li>- Animal-free production</li> </ul> <p>For more information <a href="#">see here</a>.</p> <p>Our RabMAb<sup>®</sup> technology is a patented hybridoma-based technology for making rabbit monoclonal antibodies. For details on our patents, please refer to <a href="#">RabMAb<sup>®</sup> patents</a>.</p>

#### 性能

形式	Liquid
存放说明	Shipped at 4°C. Store at +4°C short term (1-2 weeks). Upon delivery aliquot. Store at -20°C long term. Avoid freeze / thaw cycle.
存储溶液	<p>pH: 7.2</p> <p>Preservative: 0.01% Sodium azide</p> <p>Constituents: 40% Glycerol (glycerin, glycerine), 59% PBS, 0.05% BSA</p>
纯度	Protein A purified
克隆	单克隆
克隆编号	EPR16545

同种型IgG

应用

The Abpromise guarantee **Abpromise™**承诺保证使用ab192609于以下的经测试应用  
“应用说明”部分 下显示的仅为推荐的起始稀释度;实际最佳的稀释度/浓度应由使用者检定。

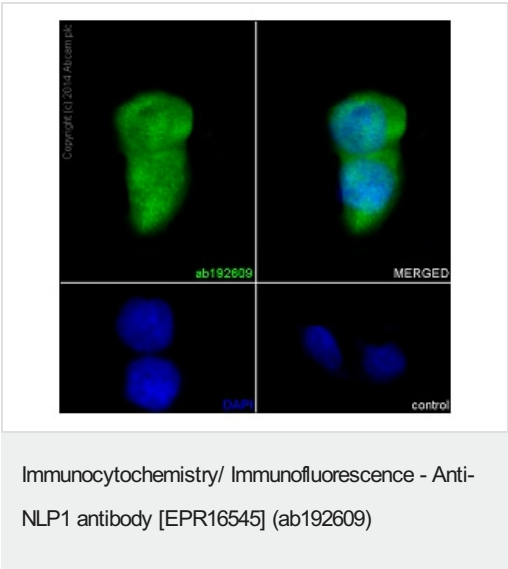
应用	Ab评论	说明
WB	★★★★★ (1)	1/1000 - 1/10000. Detects a band of approximately 45 kDa (predicted molecular weight: 45 kDa).
IHC-P		1/50 - 1/100. Perform heat mediated antigen retrieval with Tris/EDTA buffer pH 9.0 before commencing with IHC staining protocol.
ICC/IF		1/100.
IP		1/40.

靶标

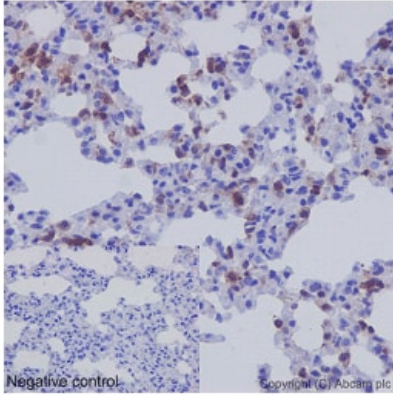
相关性CG1 is required for the export of mRNAs containing poly(A) tails from the nucleus into the cytoplasm. In case of infection by HIV-1, it may participate in the docking of viral Vpr at the nuclear envelope.

细胞定位Nucleus, nuclear pore complex. Nucleus membrane; Peripheral membrane protein; Cytoplasmic side. Note: Excluded from the nucleolus.

图片



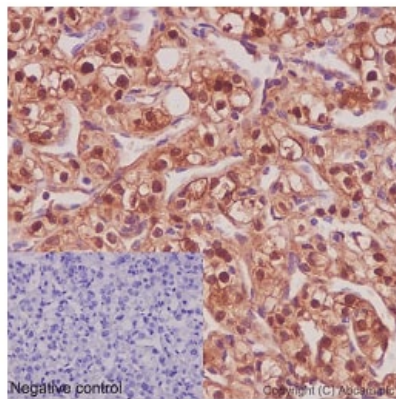
Immunofluorescent analysis of HeLa cells (4% Paraformaldehyde-fixed, 0.1% tritonX-100 permeabilized) labeling NLP1 with ab192609 at 1/100 dilution (6.3µg/mL) followed by Goat anti rabbit IgG (AlexaFluor® 488) (**ab150077**) secondary at 1/400 dilution and counter-stained with DAPI (blue). Negative control also shown.



Immunohistochemical analysis of paraffin-embedded Mouse lung tissue labeling NLP1 with ab192609 at 1/100 dilution (6 µg/ml); followed by pre-diluted HRP Polymer for Rabbit/Mouse IgG secondary antibody and counter-stained with Hematoxylin. (inset: negative control).

Perform heat mediated antigen retrieval with Tris/EDTA buffer pH 9.0 before commencing with IHC staining protocol.

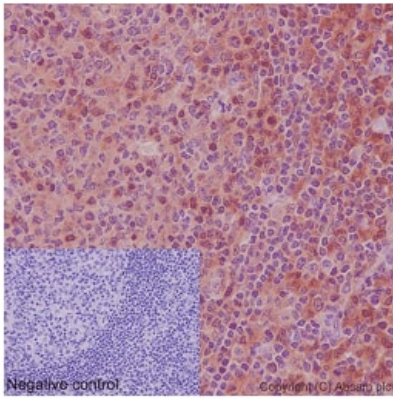
Immunohistochemistry (Formalin/PFA-fixed paraffin-embedded sections) - Anti-NLP1 antibody  
[EPR16545] (ab192609)



Immunohistochemical analysis of paraffin-embedded Human kidney clear cell carcinoma tissue labeling NLP1 with ab192609 at 1/100 dilution (6 µg/ml); followed by pre-diluted HRP Polymer for Rabbit/Mouse IgG secondary antibody and counter-stained with Hematoxylin. (inset: negative control).

Perform heat mediated antigen retrieval with Tris/EDTA buffer pH 9.0 before commencing with IHC staining protocol.

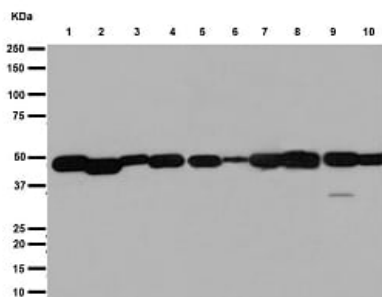
Immunohistochemistry (Formalin/PFA-fixed paraffin-embedded sections) - Anti-NLP1 antibody  
[EPR16545] (ab192609)



Immunohistochemistry (Formalin/PFA-fixed paraffin-embedded sections) - Anti-NLP1 antibody [EPR16545] (ab192609)

Immunohistochemical analysis of paraffin-embedded Human tonsil tissue labeling NLP1 with ab192609 at 1/100 dilution (6 µg/ml); followed by pre-diluted HRP Polymer for Rabbit/Mouse IgG secondary antibody and counter-stained with Hematoxylin. (inset: negative control).

Perform heat mediated antigen retrieval with Tris/EDTA buffer pH 9.0 before commencing with IHC staining protocol.



Western blot - Anti-NLP1 antibody [EPR16545] (ab192609)

**All lanes** : Anti-NLP1 antibody [EPR16545] (ab192609) at 1/1000 dilution

**Lane 1** : C6 cell lysate

**Lane 2** : RAW 264.7 cell lysate

**Lane 3** : PC-12 cell lysate

**Lane 4** : NIH/3T3 cell lysate

**Lane 5** : Mouse brain tissue lysate

**Lane 6** : Mouse heart tissue lysate

**Lane 7** : Mouse kidney tissue lysate

**Lane 8** : Mouse spleen tissue lysate

**Lane 9** : Rat brain tissue lysate

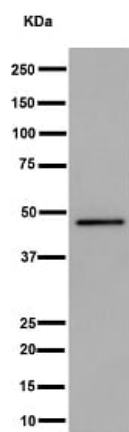
**Lane 10** : Rat heart tissue lysate

Lysates/proteins at 10 µg per lane.

### Secondary

**All lanes** : Goat Anti-Rabbit IgG, (H+L), Peroxidase conjugated at 1/1000 dilution

**Predicted band size:** 45 kDa



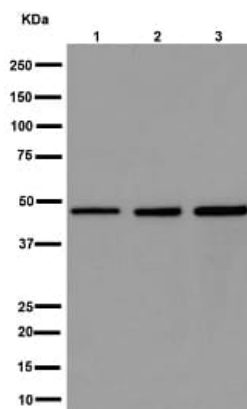
Western blot - Anti-NLP1 antibody [EPR16545]  
(ab192609)

Anti-NLP1 antibody [EPR16545] (ab192609) at 1/1000 dilution +  
Human fetal liver tissue lysate at 20 µg

#### Secondary

Goat Anti-Rabbit IgG, (H+L), Peroxidase conjugate at 1/1000  
dilution

**Predicted band size:** 45 kDa



Western blot - Anti-NLP1 antibody [EPR16545]  
(ab192609)

**All lanes :** Anti-NLP1 antibody [EPR16545] (ab192609) at  
1/10000 dilution

**Lane 1 :** 293 cell lysate

**Lane 2 :** K562 cell lysate

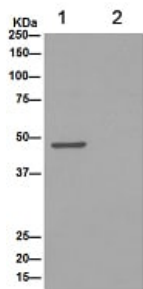
**Lane 3 :** HeLa cell lysate

Lysates/proteins at 20 µg per lane.

#### Secondary

**All lanes :** Goat Anti-Rabbit IgG, (H+L), Peroxidase conjugate at  
1/1000 dilution

**Predicted band size:** 45 kDa



Immunoprecipitation - Anti-NLP1 antibody  
[EPR16545] (ab192609)

Western blot analysis of immunoprecipitation pellet from K562 cell lysate immunoprecipitated using ab192609 at 1/40 dilution (lane 1) or PBS control (lane 2).

Secondary: Anti-Rabbit IgG (HRP), specific to the non-reduced form of IgG at 1/1500 dilution.

#### Why choose a recombinant antibody?



**Research with confidence**  
Consistent and reproducible results



**Long-term and scalable supply**  
Recombinant technology



**Success from the first experiment**  
Confirmed specificity



**Ethical standards compliant**  
Animal-free production

Anti-NLP1 antibody [EPR16545] (ab192609)

**Please note:** All products are "FOR RESEARCH USE ONLY. NOT FOR USE IN DIAGNOSTIC PROCEDURES"

#### Our Abpromise to you: Quality guaranteed and expert technical support

- Replacement or refund for products not performing as stated on the datasheet
- Valid for 12 months from date of delivery
- Response to your inquiry within 24 hours
- We provide support in Chinese, English, French, German, Japanese and Spanish
- Extensive multi-media technical resources to help you
- We investigate all quality concerns to ensure our products perform to the highest standards

If the product does not perform as described on this datasheet, we will offer a refund or replacement. For full details of the Abpromise, please visit <https://www.abcam.cn/abpromise> or contact our technical team.

#### Terms and conditions

- Guarantee only valid for products bought direct from Abcam or one of our authorized distributors