


Anti-Nicotinic Acetylcholine Receptor beta 2/CHRNA2 antibody ab189174

2 References **2 图像**

概述

产品名称	Anti-Nicotinic Acetylcholine Receptor beta 2/CHRNA2抗体
描述	山羊多克隆抗体 to Nicotinic Acetylcholine Receptor beta 2/CHRNA2
宿主	Goat
经测试应用	适用于: WB, IHC-P
种属反应性	与反应: Human 预测可用于: Mouse, Rat, Hamster, Cow, Dog, Pig, Monkey, Gorilla 
免疫原	Synthetic peptide corresponding to Human Nicotinic Acetylcholine Receptor beta 2/CHRNA2 aa 350-450 (internal sequence). NP_000739.1 Database link: P17787  Run BLAST with  Run BLAST with
阳性对照	Human cerebellum lysate; Human brain, cortex tissue.
常规说明	<p>The Life Science industry has been in the grips of a reproducibility crisis for a number of years. Abcam is leading the way in addressing this with our range of recombinant monoclonal antibodies and knockout edited cell lines for gold-standard validation. Please check that this product meets your needs before purchasing.</p> <p>If you have any questions, special requirements or concerns, please send us an inquiry and/or contact our Support team ahead of purchase. Recommended alternatives for this product can be found below, along with publications, customer reviews and Q&As</p>

性能

形式	Liquid
存放说明	Shipped at 4°C. Store at +4°C short term (1-2 weeks). Upon delivery aliquot. Store at -20°C long term. Avoid freeze / thaw cycle.
存储溶液	pH: 7.30 Preservative: 0.02% Sodium azide Constituents: 0.5% BSA, 99% Tris buffered saline
纯度	Immunogen affinity purified
克隆	多克隆

同种型IgG

应用

The Abpromise guarantee **Abpromise™**承诺保证使用ab189174于以下的经测试应用

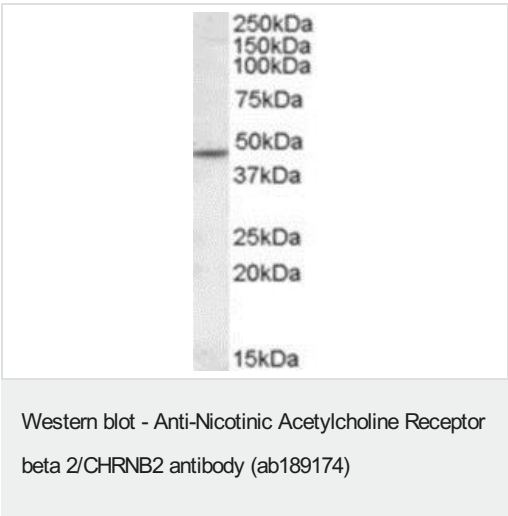
“应用说明”部分 下显示的仅为推荐的起始稀释度;实际最佳的稀释度/浓度应由使用者检定。

应用	Ab评论	说明
WB		Use a concentration of 1 - 3 µg/ml. Detects a band of approximately 48 kDa (predicted molecular weight: 57 kDa). The observed molecular weight corresponds to earlier findings with different antibodies from other commercial sources.
IHC-P		Use a concentration of 3.75 µg/ml. Perform heat mediated antigen retrieval before commencing with IHC staining protocol.

靶标

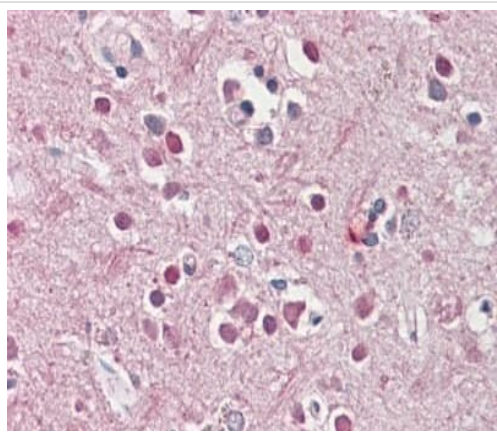
功能	After binding acetylcholine, the AChR responds by an extensive change in conformation that affects all subunits and leads to opening of an ion-conducting channel across the plasma membrane.
疾病相关	Defects in CHRNA2 are the cause of nocturnal frontal lobe epilepsy type 3 (ENFL3) [MIM:605375]. ENFL3 is an autosomal dominant epilepsy characterized by nocturnal seizures with hyperkinetic automatisms and poorly organized stereotyped movements.
序列相似性	Belongs to the ligand-gated ion channel (TC 1.A.9) family. Acetylcholine receptor (TC 1.A.9.1) subfamily. Beta-2/CHRNA2 sub-subfamily.
细胞定位	Cell junction > synapse > postsynaptic cell membrane. Cell membrane.

图片



Anti-Nicotinic Acetylcholine Receptor beta 2/CHRNA2 antibody (ab189174) at 1 µg/ml + Human cerebellum lysate (in RIPA buffer) at 35 µg

Predicted band size: 57 kDa



Immunohistochemical analysis of formalin-fixed, paraffin-embedded Human brain, cortex tissue labeling Nicotinic Acetylcholine Receptor beta 2/CHRNA2 with ab189174 at 3.75 µg/ml.

Immunohistochemistry (Formalin/PFA-fixed paraffin-embedded sections) - Anti-Nicotinic Acetylcholine Receptor beta 2/CHRNA2 antibody (ab189174)

Please note: All products are "FOR RESEARCH USE ONLY. NOT FOR USE IN DIAGNOSTIC PROCEDURES"

Our Abpromise to you: Quality guaranteed and expert technical support

- Replacement or refund for products not performing as stated on the datasheet
- Valid for 12 months from date of delivery
- Response to your inquiry within 24 hours
- We provide support in Chinese, English, French, German, Japanese and Spanish
- Extensive multi-media technical resources to help you
- We investigate all quality concerns to ensure our products perform to the highest standards

If the product does not perform as described on this datasheet, we will offer a refund or replacement. For full details of the Abpromise, please visit <https://www.abcam.cn/abpromise> or contact our technical team.

Terms and conditions

- Guarantee only valid for products bought direct from Abcam or one of our authorized distributors