

Anti-Neurofilament heavy polypeptide antibody ab4680

★★★★★ [12 Abreviews](#) [118 References](#) [6 图像](#)

概述

产品名称	Anti-Neurofilament heavy polypeptide抗体
描述	鸡多克隆抗体to Neurofilament heavy polypeptide
宿主	Chicken
经测试应用	适用于: ICC, IHC-FrFI, WB
种属反应性	与反应: Mouse, Rat, Cow, Human
免疫原	Full length native protein (purified). This information is proprietary to Abcam and/or its suppliers.
常规说明	<p>The Life Science industry has been in the grips of a reproducibility crisis for a number of years. Abcam is leading the way in addressing this with our range of recombinant monoclonal antibodies and knockout edited cell lines for gold-standard validation. Please check that this product meets your needs before purchasing.</p> <p>If you have any questions, special requirements or concerns, please send us an inquiry and/or contact our Support team ahead of purchase. Recommended alternatives for this product can be found below, along with publications, customer reviews and Q&As</p>

性能

形式	Liquid
存放说明	Shipped at 4°C. Store at +4°C. Do Not Freeze.
存储溶液	Preservative: 0.032% Sodium azide Constituent: PBS
纯度	IgY fraction
纯化说明	This is an IgY prep, similar to a mammalian ammonium sulphate IgG prep from serum. It is virtually pure IgY and we estimate that about 5% of material is specific to the immunogen.
克隆	多克隆
同种型	IgY

应用

The Abpromise guarantee **Abpromise™**承诺保证使用ab4680于以下的经测试应用

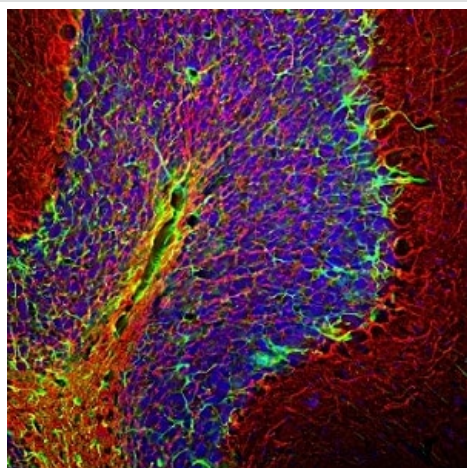
“应用说明”部分 下显示的仅为推荐的起始稀释度;实际最佳的稀释度/浓度应由使用者检定。

应用	Ab评论	说明
ICC	★★★★★ (1)	Use at an assay dependent concentration.
IHC-FrFI	★★★★★ (1)	Use at an assay dependent concentration.
WB		1/1e+006. Predicted molecular weight: 200-220 kDa.

靶标

功能	Neurofilaments usually contain three intermediate filament proteins: L, M, and H which are involved in the maintenance of neuronal caliber. NF-H has an important function in mature axons that is not subserved by the two smaller NF proteins.
疾病相关	Defects in NEFH are a cause of susceptibility to amyotrophic lateral sclerosis (ALS) [MIM:105400]. ALS is a neurodegenerative disorder affecting upper and lower motor neurons, and resulting in fatal paralysis. Sensory abnormalities are absent. Death usually occurs within 2 to 5 years. The etiology is likely to be multifactorial, involving both genetic and environmental factors.
序列相似性	Belongs to the intermediate filament family.
翻译后修饰	There are a number of repeats of the tripeptide K-S-P, NFH is phosphorylated on a number of the serines in this motif. It is thought that phosphorylation of NFH results in the formation of interfilament cross bridges that are important in the maintenance of axonal caliber. Phosphorylation seems to play a major role in the functioning of the larger neurofilament polypeptides (NF-M and NF-H), the levels of phosphorylation being altered developmentally and coincident with a change in the neurofilament function. Phosphorylated in the Head and Rod regions by the PKC kinase PKN1, leading to inhibit polymerization.

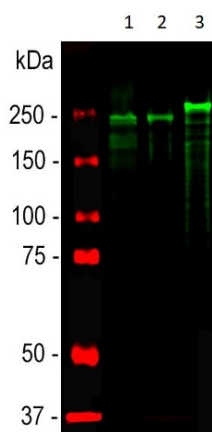
图片



Immunohistological analysis of a rat cerebellum section stained with ab4680 at a dilution 1:5,000 in red, and co-stained with rabbit pAb to GFAP at a dilution 1:5,000 in green. The blue is DAPI staining of nuclear DNA.

Following transcardial perfusion with 4% paraformaldehyde, brain was post fixed for 24 hours, cut to 45 μ M, and free floating sections were stained.

Immunohistochemistry - Free Floating - Anti-Neurofilament heavy polypeptide antibody (ab4680)



Western blot - Anti-Neurofilament heavy polypeptide antibody (ab4680)

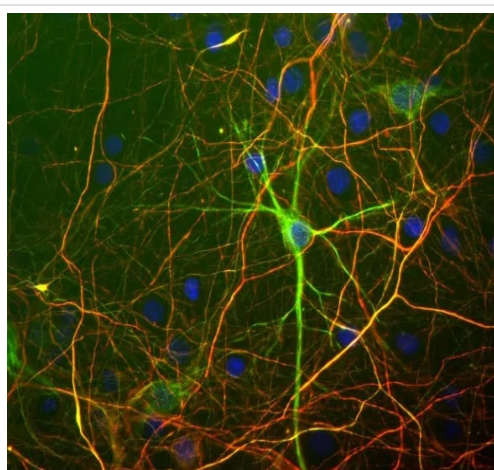
All lanes : Anti-Neurofilament heavy polypeptide antibody (ab4680) at 1/20000 dilution

Lane 1 : Rat spinal cord lysate

Lane 2 : Mouse spinal cord lysate

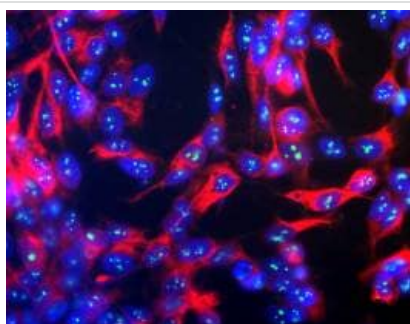
Lane 3 : Cow spinal cord lysate

Predicted band size: 200-220 kDa



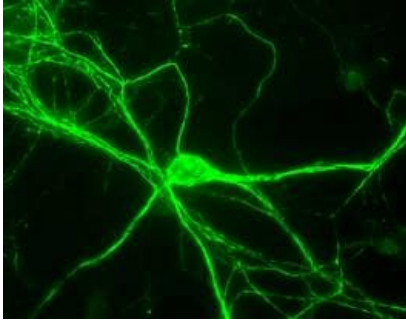
Immunocytochemistry - Anti-Neurofilament heavy polypeptide antibody (ab4680)

Mixed neuron/glia cultures stained with a mouse monoclonal antibody to neurofilament subunit NF-L (green) and ab4680, chicken antibody to neurofilament heavy polypeptide. This antibody binds primarily to the phosphorylated axonal forms of NF-H, in contrast to the NF-L antibody which stains both axonal and dendritic/perikaryal neurofilaments. The NF-L antibody therefore reveals a prominent cell body in green, while the surrounding axonal profiles are orange, since they are bound by both NF-L and the chicken NF-H antibody. Blue is a DNA stain.



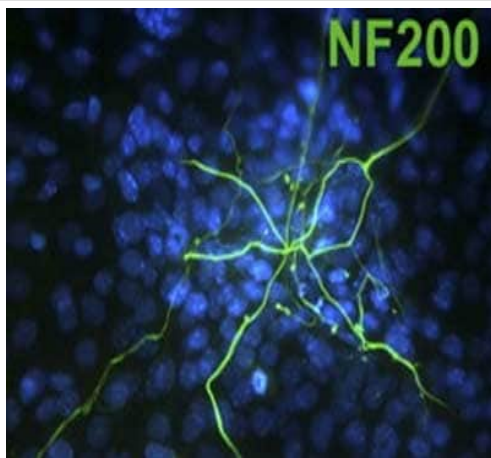
Immunocytochemistry/ Immunofluorescence - Anti-Neurofilament heavy polypeptide antibody (ab4680)

Human neuroblastoma SH-SY5Y cells stained with chicken anti-NF-H (red) and mouse monoclonal to fibrillarin 38F3 (green). Nuclear DNA is revealed with Hoechst dye (blue). The NF-H antibody was used at a dilution of 1/100000 and the fibrillarin monoclonal at 1/1000. Cultures were processed using our standard fixation and staining procedure (in protocol section).



Rat Neurons stained with chicken anti-NF-H (green). The NF-H antibody was used at a dilution of 1/100000 using our standard fixation and staining procedure (in protocol section).

Immunocytochemistry/ Immunofluorescence - Anti-Neurofilament heavy polypeptide antibody (ab4680)



ab4680 staining Neurofilament heavy polypeptide (green) in murine embryoid bodies by Immunocytochemistry/ Immunofluorescence. Nuclei were visualized with DAPI.

Immunocytochemistry - Anti-Neurofilament heavy polypeptide antibody (ab4680)

Image from Wirt SE et al, J Cell Biol. 2010 Nov 15;191(4):809-25. Epub 2010 Nov 8, Fig 4. DOI 10.1083/jcb.201003048

Please note: All products are "FOR RESEARCH USE ONLY. NOT FOR USE IN DIAGNOSTIC PROCEDURES"

Our Abpromise to you: Quality guaranteed and expert technical support

- Replacement or refund for products not performing as stated on the datasheet
- Valid for 12 months from date of delivery
- Response to your inquiry within 24 hours
- We provide support in Chinese, English, French, German, Japanese and Spanish
- Extensive multi-media technical resources to help you
- We investigate all quality concerns to ensure our products perform to the highest standards

If the product does not perform as described on this datasheet, we will offer a refund or replacement. For full details of the Abpromise, please visit <https://www.abcam.cn/abpromise> or contact our technical team.

Terms and conditions

- Guarantee only valid for products bought direct from Abcam or one of our authorized distributors