


Anti-Nestin antibody - Neural Stem Cell Marker ab92391

★★★★★ [7 Abreviews](#) [37 References](#) [3 图像](#)

概述

产品名称	Anti-Nestin抗体- Neural Stem Cell Marker
描述	兔多克隆抗体to Nestin - Neural Stem Cell Marker
宿主	Rabbit
特异性	The immunoreactivity detected with Rabbit polyclonal to Nestin (ab92391) does not overlap in with that of the mature neuronal markers such as MAP2, NeuN, Neurofilament L and Beta-3-tublin (data available on request).
经测试应用	适用于: ICC/IF 不适用于: IHC-FoFr or IHC-P
种属反应性	与反应: Rat 预测可用于: Human 
免疫原	Synthetic peptide corresponding to Human Nestin aa 1600 to the C-terminus (C terminal) conjugated to keyhole limpet haemocyanin. (Peptide available as ab19375)
阳性对照	This antibody gave a positive signal in P0 rat retinal cell culture and E16 rat hippocampal cell culture.
常规说明	<p>ab92391 is raised using the same immunogen as ab5968. Batches sold under ab92391 have passed QC testing in ICC/IF only. In our hands, this product did not work in IHC-P. For further information please contact our Customer Services team.</p> <p>The Life Science industry has been in the grips of a reproducibility crisis for a number of years. Abcam is leading the way in addressing this with our range of recombinant monoclonal antibodies and knockout edited cell lines for gold-standard validation. Please check that this product meets your needs before purchasing.</p> <p>If you have any questions, special requirements or concerns, please send us an inquiry and/or contact our Support team ahead of purchase. Recommended alternatives for this product can be found below, along with publications, customer reviews and Q&As</p>

性能

形式	Liquid
存放说明	Shipped at 4°C. Store at +4°C short term (1-2 weeks). Upon delivery aliquot. Store at -20°C or -80°C. Avoid freeze / thaw cycle.

存储溶液	<p>pH: 7.40</p> <p>Preservative: 0.02% Sodium azide</p> <p>Constituent: PBS</p> <p>Batches of this product that have a concentration < 1mg/ml may have BSA added as a stabilising agent. If you would like information about the formulation of a specific lot, please contact our scientific support team who will be happy to help.</p>
纯度	Immunogen affinity purified
克隆	多克隆
同种型	IgG

应用

The Abpromise guarantee

Abpromise™承诺保证使用ab92391于以下的经测试应用

“应用说明”部分 下显示的仅为推荐的起始稀释度;实际最佳的稀释度/浓度应由使用者检定。

应用	Ab评论	说明
ICC/IF	★★★★★ (4)	1/250.

应用说明

Is unsuitable for IHC-FoFr or IHC-P.

靶标

功能

Required for brain and eye development. Promotes the disassembly of phosphorylated vimentin intermediate filaments (IF) during mitosis and may play a role in the trafficking and distribution of IF proteins and other cellular factors to daughter cells during progenitor cell division. Required for survival, renewal and mitogen-stimulated proliferation of neural progenitor cells.

组织特异性

CNS stem cells.

序列相似性

Belongs to the intermediate filament family.

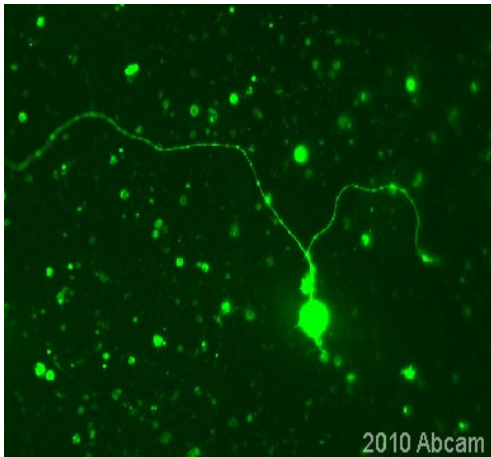
发展阶段

Upon terminal neural differentiation, nestin is down-regulated and replaced by neurofilaments.

翻译后修饰

Constitutively phosphorylated. This increases during mitosis when the cytoplasmic intermediate filament network is reorganized.

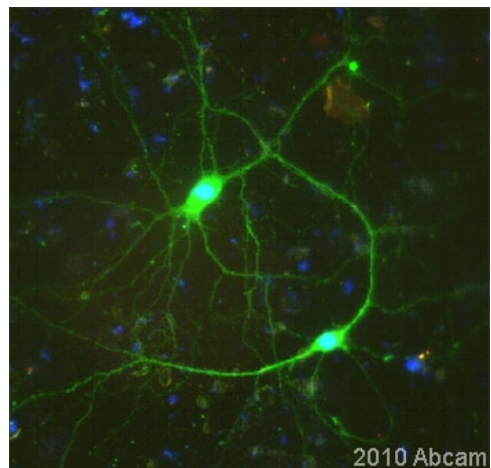
图片	
----	--



Immunocytochemistry/ Immunofluorescence - Anti-Nestin antibody - Neural Stem Cell Marker (ab92391)

This image is courtesy of Ruma Raha-Chowdhury, University Of Cambridge, United Kingdom

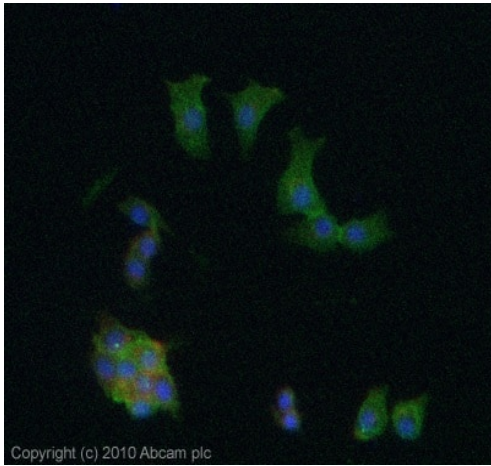
Immunocytochemical localisation of Nestin using ab92391 on P0 rat retinal culture. The image shows a nestin positive retinal ganglionic cell from P0 retina that has been grown for 7 days on a glass coverslip. Cover slips were fixed in 5% PFA in 0.1M PBS (1xPBS) for 5 minutes and washed with 0.1M PBS. Permeabilisation: 0.3% Triton X-100. Primary antibody ab92391 was diluted 1/250 and incubated for 2h @ RT. Secondary antibody: donkey anti-rabbit Alexa Fluor 488 (1/2000).



Immunocytochemistry/ Immunofluorescence - Anti-Nestin antibody - Neural Stem Cell Marker (ab92391)

This image is courtesy of Ruma Raha-Chowdhury, University Of Cambridge, United Kingdom

Immunocytochemical localisation of Nestin using ab92391 on E16 rat hippocampal cell culture. The image shows nestin positive rat hippocampal cells isolated from embryonic day 16 (grown in serum free conditions for 2-3 weeks). Cover slips were fixed in 5% PFA in 0.1M PBS (1xPBS) for 5 minutes and washed with 0.1M PBS. Permeabilisation: 0.3% Triton X-100. Primary antibody ab92391 was diluted 1/250 and incubated for 2h @ RT. Secondary antibody: donkey anti-rabbit Alexa Fluor 488 (1/2000). DAPI in blue stains nuclei.



Immunocytochemistry/ Immunofluorescence - Anti-Nestin antibody - Neural Stem Cell Marker (ab92391)

ICC/IF image of ab92391 stained PC12 cells. The cells were 4% PFA fixed (10 min) and then incubated in 1%BSA / 10% normal Goat serum / 0.3M glycine in 0.1% PBS-Tween for 1h to permeabilise the cells and block non-specific protein-protein interactions. The cells were then incubated with the antibody (ab92391, 1µg/ml) overnight at +4°C. The secondary antibody (green) was Alexa Fluor® 488 Goat anti-Rabbit IgG (H+L) used at a 1/1000 dilution for 1h. Alexa Fluor® 594 WGA was used to label plasma membranes (red) at a 1/200 dilution for 1h. DAPI was used to stain the cell nuclei (blue) at a concentration of 1.43µM.

Please note: All products are "FOR RESEARCH USE ONLY. NOT FOR USE IN DIAGNOSTIC PROCEDURES"

Our Abpromise to you: Quality guaranteed and expert technical support

- Replacement or refund for products not performing as stated on the datasheet
- Valid for 12 months from date of delivery
- Response to your inquiry within 24 hours
- We provide support in Chinese, English, French, German, Japanese and Spanish
- Extensive multi-media technical resources to help you
- We investigate all quality concerns to ensure our products perform to the highest standards

If the product does not perform as described on this datasheet, we will offer a refund or replacement. For full details of the Abpromise, please visit <https://www.abcam.cn/abpromise> or contact our technical team.

Terms and conditions

- Guarantee only valid for products bought direct from Abcam or one of our authorized distributors