

Anti-NELFe antibody [EPR11600] ab170104

重组 RabMAb

★★★★★ **1 Abreviews** **12 References** **8 图像**

概述

产品名称	Anti-NELFe抗体[EPR11600]
描述	兔单克隆抗体[EPR11600] to NELFe
宿主	Rabbit
经测试应用	适用于: Flow Cyt (Intra), WB, ICC/IF, IP 不适用于: IHC-P
种属反应性	与反应: Mouse, Rat, Human
免疫原	Recombinant fragment corresponding to Human NELFe.
阳性对照	WB: HeLa, T47-D, HepG2 or 293T lysate, HepG2 cells. Mouse and Rat brain lysates. ICC/IF: HeLa cells. Flow Cyt (intra): HeLa cells. IP: HeLa cells.
常规说明	This product is a recombinant monoclonal antibody, which offers several advantages including: <ul style="list-style-type: none"> - High batch-to-batch consistency and reproducibility - Improved sensitivity and specificity - Long-term security of supply - Animal-free production For more information see here . Our RabMAb [®] technology is a patented hybridoma-based technology for making rabbit monoclonal antibodies. For details on our patents, please refer to RabMAb[®] patents .

性能

形式	Liquid
存放说明	Shipped at 4°C. Store at +4°C short term (1-2 weeks). Upon delivery aliquot. Store at -20°C long term.
存储溶液	Preservative: 0.01% Sodium azide Constituents: 59% PBS, 40% Glycerol (glycerin, glycerine), 0.05% BSA
纯度	Protein A purified
克隆	单克隆
克隆编号	EPR11600
同种型	IgG

应用

The Abpromise guarantee

Abpromise™ 承诺保证使用ab170104于以下的经测试应用

“应用说明”部分下显示的仅为推荐的起始稀释度；实际最佳的稀释度/浓度应由使用者检定。

应用	Ab评论	说明
Flow Cyt (Intra)		1/300.
WB	★★★★★ (1)	1/1000 - 1/5000. Predicted molecular weight: 44 kDa.
ICC/IF		1/500. For unpurified use at 1/100 - 1/250.
IP		1/10 - 1/100.

应用说明

Is unsuitable for IHC-P.

靶标

功能

Essential component of the NELF complex, a complex that negatively regulates the elongation of transcription by RNA polymerase II. The NELF complex, which acts via an association with the DSIF complex and causes transcriptional pausing, is counteracted by the P-TEFb kinase complex.

组织特异性

Widely expressed. Expressed in heart, brain, lung, placenta, liver, skeletal muscle, kidney and pancreas.

序列相似性

Belongs to the RRM NELF-E family.
Contains 1 RRM (RNA recognition motif) domain.

结构域

The RRM domain interacts with RNA, and is essential for NELF complex function. It is however not required for the NELF complex formation.

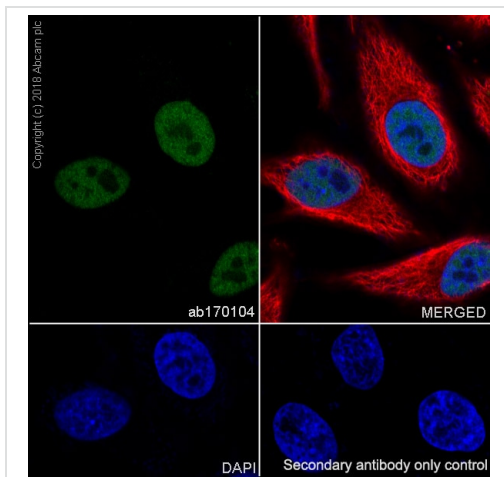
翻译后修饰

Sumoylated.

细胞定位

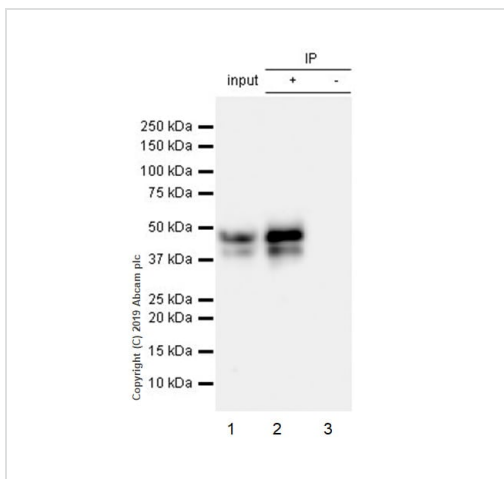
Nucleus.

图片



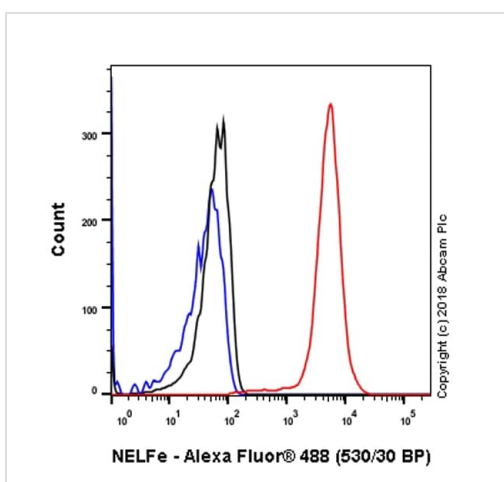
Immunocytochemistry/ Immunofluorescence - Anti-NELFe antibody [EPR11600] (ab170104)

Immunocytochemistry/ Immunofluorescence analysis of HeLa (Human cervix adenocarcinoma epithelial cell) cells labeling NELFe with Purified ab170104 at 1:500 dilution (0.5 µg/ml). Cells were fixed in 4% Paraformaldehyde and permeabilized with 0.1% tritonX-100. Cells were counterstained with Ab195889 Anti-alpha Tubulin antibody [DM1A] - Microtubule Marker (Alexa Fluor® 594) 1:200 (2.5 µg/ml). Goat anti rabbit IgG (Alexa Fluor® 488, **ab150077**) was used as the secondary antibody at 1:1000 (2 µg/ml) dilution. DAPI nuclear counterstain. PBS instead of the primary antibody was used as the secondary antibody only control.



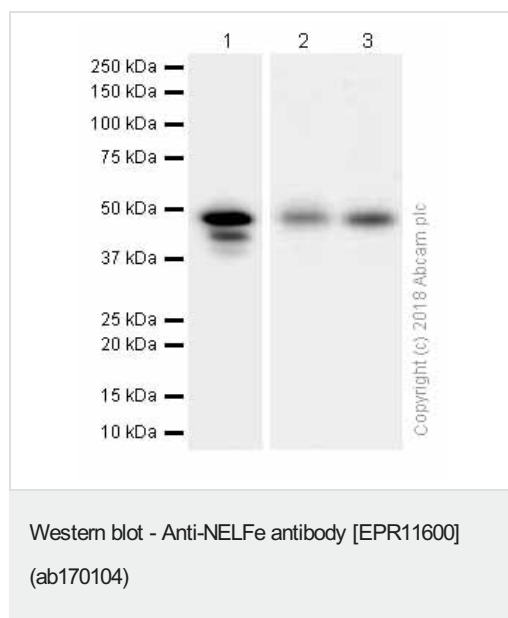
Immunoprecipitation - Anti-NELFe antibody [EPR11600] (ab170104)

ab170104 (purified) at 1:20 dilution (2µg) immunoprecipitating NELFe in HeLa whole cell lysate.
Lane 1 (input): HeLa (Human cervix adenocarcinoma epithelial cell) whole cell lysate 10µg
Lane 2 (+): ab170104 & HeLa whole cell lysate
Lane 3 (-): Rabbit monoclonal IgG (**ab172730**) instead of ab170104 in HeLa whole cell lysate
For western blotting, VeriBlot for IP Detection Reagent (HRP) (**ab131366**) was used for detection at 1:1000 dilution.
Blocking and diluting buffer: 5% NFDm/TBST.



Flow Cytometry (Intracellular) - Anti-NELFe antibody [EPR11600] (ab170104)

Intracellular Flow Cytometry analysis of HeLa (Human cervix adenocarcinoma epithelial cell) cells labeling NELFe with Purified ab170104 at 1/300 dilution (1 µg/ml) (red). Cells were fixed with 4% Paraformaldehyde. A Goat anti rabbit IgG (Alexa Fluor® 488, **ab150077**) secondary antibody was used at 1/2000. Isotype control - Rabbit monoclonal IgG (Black). Unlabeled control - Cell without incubation with primary antibody and secondary antibody (Blue).



All lanes : Anti-NELFe antibody [EPR11600] (ab170104) at 1/5000 dilution (Purified)

Lane 1 : HeLa (Human cervix adenocarcinoma epithelial cell) whole cell lysates

Lane 2 : Mouse brain lysates

Lane 3 : Rat brain lysates

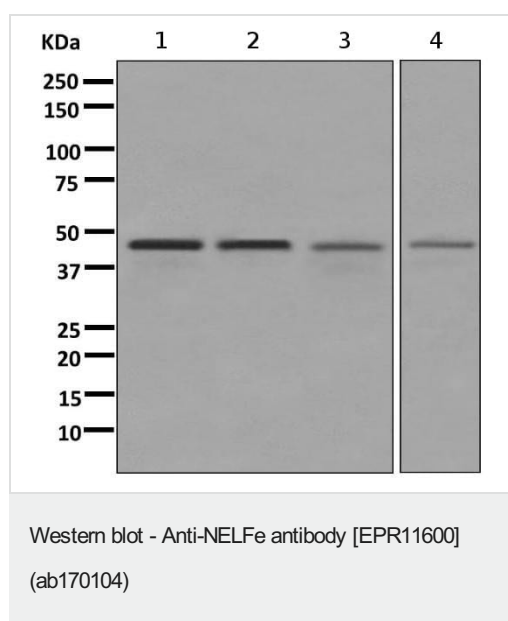
Lysates/proteins at 20 µg per lane.

Secondary

All lanes : Goat Anti-Rabbit IgG H&L (HRP) ([ab97051](#)) at 1/20000 dilution

Predicted band size: 44 kDa

Observed band size: 44 kDa



All lanes : Anti-NELFe antibody [EPR11600] (ab170104) at 1/1000 dilution

Lane 1 : HeLa cell lysate

Lane 2 : T47-D cell lysate

Lane 3 : HepG2 cell lysate

Lane 4 : 293T cell lysate

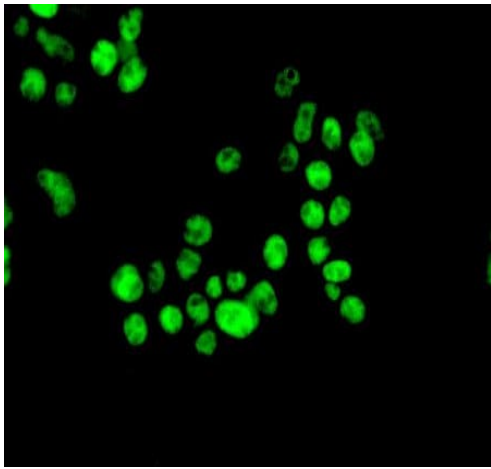
Lysates/proteins at 10 µg per lane.

Secondary

All lanes : HRP labelled goat anti-rabbit at 1/2000 dilution

Predicted band size: 44 kDa

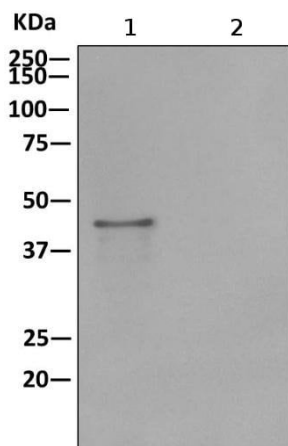
This image was generated using the unpurified version of the product.



Immunocytochemistry/ Immunofluorescence - Anti-NELFe antibody [EPR11600] (ab170104)

Immunofluorescence analysis of HepG2 cells labeling NELFe with ab170104 at a 1/100 dilution.

This image was generated using the unpurified version of the product.



Immunoprecipitation - Anti-NELFe antibody [EPR11600] (ab170104)

Western blot analysis on immunoprecipitation pellet from HeLa cell lysate (lane 1) or 1X PBS (negative control) (lane 2) using ab170104, and HRP-conjugated anti-rabbit IgG preferentially detecting the non-reduced form of rabbit IgG.

This image was generated using the unpurified version of the product.

Why choose a recombinant antibody?



Research with confidence
Consistent and reproducible results



Long-term and scalable supply
Recombinant technology



Success from the first experiment
Confirmed specificity



Ethical standards compliant
Animal-free production

Anti-NELFe antibody [EPR11600] (ab170104)

Please note: All products are "FOR RESEARCH USE ONLY. NOT FOR USE IN DIAGNOSTIC PROCEDURES"

Our Abpromise to you: Quality guaranteed and expert technical support

- Replacement or refund for products not performing as stated on the datasheet
- Valid for 12 months from date of delivery
- Response to your inquiry within 24 hours
- We provide support in Chinese, English, French, German, Japanese and Spanish
- Extensive multi-media technical resources to help you
- We investigate all quality concerns to ensure our products perform to the highest standards

If the product does not perform as described on this datasheet, we will offer a refund or replacement. For full details of the Abpromise, please visit <https://www.abcam.cn/abpromise> or contact our technical team.

Terms and conditions

- Guarantee only valid for products bought direct from Abcam or one of our authorized distributors