

# Anti-NDUFS6 antibody ab230464

### 3 图像

#### 概述

<b>产品名称</b>	Anti-NDUFS6抗体
<b>描述</b>	兔多克隆抗体to NDUFS6
<b>宿主</b>	Rabbit
<b>经测试应用</b>	<b>适用于:</b> WB, IHC-P
<b>种属反应性</b>	<b>与反应:</b> Mouse, Human <b>预测可用于:</b> Chimpanzee, Cynomolgus monkey, Gorilla 
<b>免疫原</b>	Recombinant full length protein corresponding to Human NDUFS6 aa 1 to the C-terminus. Full length chain, without signal peptide. Database link: <a href="#">O75380</a>  <a href="#">Run BLAST with</a>  <a href="#">Run BLAST with</a>
<b>阳性对照</b>	WB: Mouse brain lysate; HepG2 whole cell lysate. IHC-P: Human adrenal gland and gastric cancer tissues.
<b>常规说明</b>	<p>The Life Science industry has been in the grips of a reproducibility crisis for a number of years. Abcam is leading the way in addressing this with our range of recombinant monoclonal antibodies and knockout edited cell lines for gold-standard validation. Please check that this product meets your needs before purchasing.</p> <p>If you have any questions, special requirements or concerns, please send us an inquiry and/or contact our Support team ahead of purchase. Recommended alternatives for this product can be found below, along with publications, customer reviews and Q&amp;As</p>

#### 性能

<b>形式</b>	Liquid
<b>存放说明</b>	Shipped at 4°C. Store at +4°C short term (1-2 weeks). Upon delivery aliquot. Store at -20°C long term. Avoid freeze / thaw cycle.
<b>存储溶液</b>	pH: 7.30 Preservative: 0.02% Sodium azide Constituents: PBS, 50% Glycerol (glycerin, glycerine)
<b>纯度</b>	Immunogen affinity purified
<b>克隆</b>	多克隆
<b>同种型</b>	IgG

## 应用

**The Abpromise guarantee**      **Abpromise™**承诺保证使用ab230464于以下的经测试应用

“应用说明”部分 下显示的仅为推荐的起始稀释度;实际最佳的稀释度/浓度应由使用者检定。

应用	Ab评论	说明
WB		1/1000 - 1/5000. Detects a band of approximately 14 kDa (predicted molecular weight: 13 kDa).
IHC-P		1/20 - 1/200.

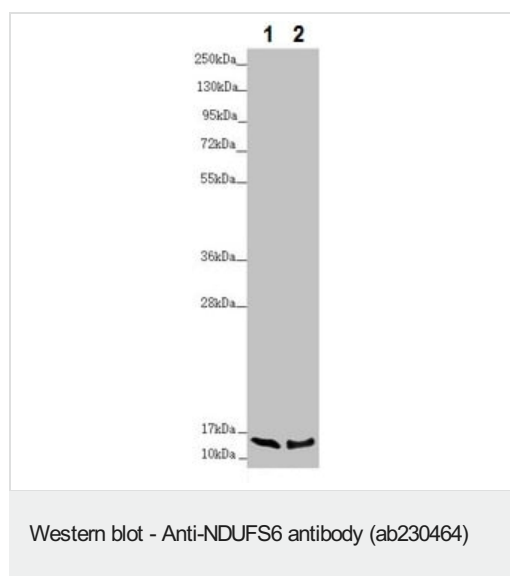
## 靶标

**功能**      Accessory subunit of the mitochondrial membrane respiratory chain NADH dehydrogenase (Complex I), that is believed not to be involved in catalysis. Complex I functions in the transfer of electrons from NADH to the respiratory chain. The immediate electron acceptor for the enzyme is believed to be ubiquinone.

**序列相似性**      Belongs to the complex I NDUFS6 subunit family.

**细胞定位**      Mitochondrion inner membrane.

## 图片



**All lanes :** Anti-NDUFS6 antibody (ab230464) at 1/1000 dilution

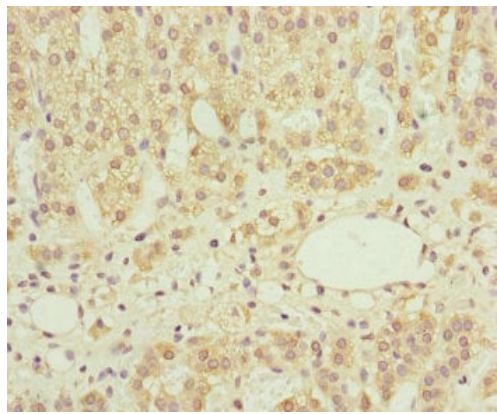
**Lane 1 :** Mouse brain lysate

**Lane 2 :** HepG2 (human liver hepatocellular carcinoma cell line) whole cell lysate

### Secondary

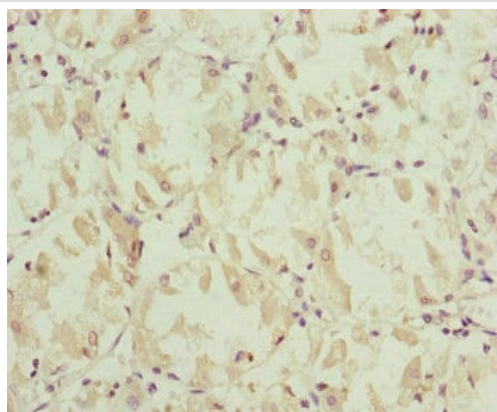
**All lanes :** Goat polyclonal to rabbit IgG at 1/10000 dilution

**Predicted band size:** 13 kDa



Immunohistochemistry (Formalin/PFA-fixed paraffin-embedded sections) - Anti-NDUFS6 antibody (ab230464)

Paraffin-embedded human adrenal gland tissue stained for NDUFS6 using ab230464 at 1/100 dilution in immunohistochemical analysis.



Immunohistochemistry (Formalin/PFA-fixed paraffin-embedded sections) - Anti-NDUFS6 antibody (ab230464)

Paraffin-embedded human gastric cancer tissue stained for NDUFS6 using ab230464 at 1/100 dilution in immunohistochemical analysis.

**Please note:** All products are "FOR RESEARCH USE ONLY. NOT FOR USE IN DIAGNOSTIC PROCEDURES"

#### **Our Abpromise to you: Quality guaranteed and expert technical support**

---

- Replacement or refund for products not performing as stated on the datasheet
- Valid for 12 months from date of delivery
- Response to your inquiry within 24 hours
- We provide support in Chinese, English, French, German, Japanese and Spanish

- Extensive multi-media technical resources to help you
- We investigate all quality concerns to ensure our products perform to the highest standards

If the product does not perform as described on this datasheet, we will offer a refund or replacement. For full details of the Abpromise, please visit <https://www.abcam.cn/abpromise> or contact our technical team.

### **Terms and conditions**

---

- Guarantee only valid for products bought direct from Abcam or one of our authorized distributors