


### Anti-NCX1 antibody [EPR12739] ab177952

**重组 RabMAb**

★★★★☆ **1 Abreviews** **15 References** **3 图像**

#### 概述

|              |   |
|--------------|---|
| <b>产品名称</b>  | Anti-NCX1抗体[EPR12739]   |
| <b>描述</b>    | 兔单克隆抗体[EPR12739] to NCX1  |
| <b>宿主</b>    | Rabbit  |
| <b>经测试应用</b> | <b>适用于:</b> WB<br><b>不适用于:</b> Flow Cyt, ICC/IF, IHC-P or IP  |
| <b>种属反应性</b> | <b>与反应:</b> Mouse, Rat, Human<br><b>预测可用于:</b> Common marmoset   |
| <b>免疫原</b>   | Synthetic peptide within Human NCX1 aa 50-150. The exact sequence is proprietary.<br>Database link: <b><a href="#">P32418</a></b>   |
| <b>阳性对照</b>  | Human, Rat and Mouse heart lysates.   |
| <b>常规说明</b>  | This product is a recombinant monoclonal antibody, which offers several advantages including:<br><ul style="list-style-type: none"> <li>- High batch-to-batch consistency and reproducibility</li> <li>- Improved sensitivity and specificity</li> <li>- Long-term security of supply</li> <li>- Animal-free production</li> </ul> For more information <b><a href="#">see here</a></b> .<br><br>Our RabMAb <sup>®</sup> technology is a patented hybridoma-based technology for making rabbit monoclonal antibodies. For details on our patents, please refer to <b><a href="#">RabMAb<sup>®</sup> patents</a></b> . |

#### 性能

|             |   |
|-------------|---|
| <b>形式</b>   | Liquid  |
| <b>存放说明</b> | Shipped at 4°C. Store at +4°C short term (1-2 weeks). Upon delivery aliquot. Store at -20°C long term. Avoid freeze / thaw cycle. |
| <b>存储溶液</b> | Preservative: 0.01% Sodium azide<br>Constituents: 59% PBS, 40% Glycerol, 0.05% BSA  |
| <b>纯度</b>   | Protein A purified  |
| <b>克隆</b>   | 单克隆   |
| <b>克隆编号</b> | EPR12739  |

同种型

IgG

## 应用

### The Abpromise guarantee

**Abpromise™**承诺保证使用ab177952于以下的经测试应用

“应用说明”部分 下显示的仅为推荐的起始稀释度;实际最佳的稀释度/浓度应由使用者检定。

| 应用 | Ab评论      | 说明   |
|----|-----------|--|
| WB | ★★★★☆ (1) | 1/1000 - 1/10000. Detects a band of approximately 120 kDa (predicted molecular weight: 108 kDa). |

### 应用说明

Is unsuitable for Flow Cyt, ICC/IF, IHC-P or IP.

## 靶标

### 功能

Rapidly transports Ca(2+) during excitation-contraction coupling. Ca(2+) is extruded from the cell during relaxation so as to prevent overloading of intracellular stores.

### 组织特异性

Expressed in cardiac sarcolemma, brain, kidney, liver, pancreas, skeletal muscle, placenta and lung.

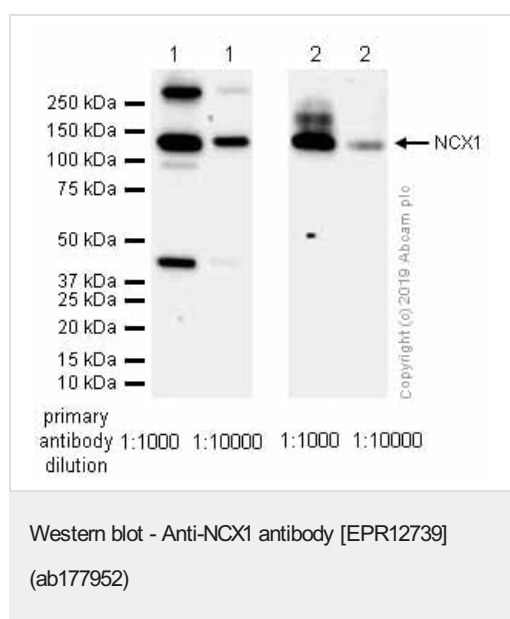
### 序列相似性

Belongs to the sodium/potassium/calcium exchanger family. SLC8 subfamily. Contains 2 Calx-beta domains.

### 细胞定位

Cell membrane.

## 图片



**All lanes** : Anti-NCX1 antibody [EPR12739] (ab177952) (at a dilution of 1/1000 or 1/10000. Purified)

**Lane 1** : Mouse heart tissue lysate

**Lane 2** : Rat heart tissue lysate

Lysates/proteins at 15 µg per lane.

### Secondary

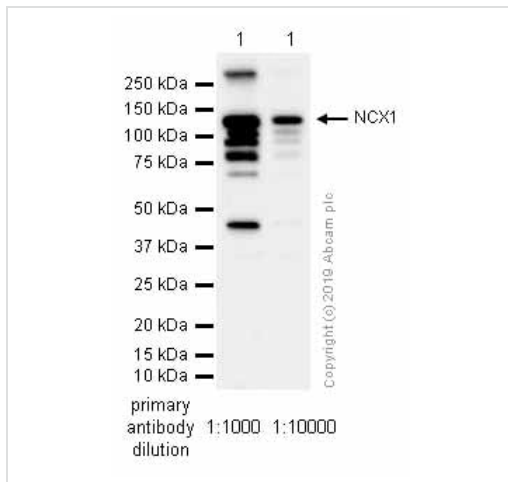
**All lanes** : Goat Anti-Rabbit IgG H&L (HRP) (**ab97051**) at 1/20000 dilution

**Predicted band size:** 108 kDa

**Observed band size:** 120 kDa

This antibody detects high background at high working

concentration.



Western blot - Anti-NCX1 antibody [EPR12739] (ab177952)

Anti-NCX1 antibody [EPR12739] (ab177952) (at a dilution of 1/1000 or 1/10000. Purified) + Human heart lysates at 15 µg

### Secondary

Goat Anti-Rabbit IgG (HRP) with minimal cross-reactivity with human IgG at 1/2000 dilution

**Predicted band size:** 108 kDa

**Observed band size:** 120 kDa

This antibody detects high background at high working concentration.

Why choose a recombinant antibody?

|   |   |
|---|---|
|  <p><b>Research with confidence</b><br/>Consistent and reproducible results</p> |  <p><b>Long-term and scalable supply</b><br/>Recombinant technology</p> |
|  <p><b>Success from the first experiment</b><br/>Confirmed specificity</p>     |  <p><b>Ethical standards compliant</b><br/>Animal-free production</p>  |

Anti-NCX1 antibody [EPR12739] (ab177952)

**Please note:** All products are "FOR RESEARCH USE ONLY. NOT FOR USE IN DIAGNOSTIC PROCEDURES"

### Our Abpromise to you: Quality guaranteed and expert technical support

- Replacement or refund for products not performing as stated on the datasheet
- Valid for 12 months from date of delivery
- Response to your inquiry within 24 hours
- We provide support in Chinese, English, French, German, Japanese and Spanish
- Extensive multi-media technical resources to help you
- We investigate all quality concerns to ensure our products perform to the highest standards

If the product does not perform as described on this datasheet, we will offer a refund or replacement. For full details of the Abpromise, please visit <https://www.abcam.cn/abpromise> or contact our technical team.

## Terms and conditions

---

- Guarantee only valid for products bought direct from Abcam or one of our authorized distributors