


Anti-NCX1 antibody [C2C12] ab2869

★★★★★ [4 Abreviews](#) [29 References](#) [4 图像](#)

概述

产品名称	Anti-NCX1抗体[C2C12]
描述	小鼠单克隆抗体[C2C12] to NCX1
宿主	Mouse
经测试应用	适用于: Flow Cyt (Intra), IHC-P, IHC-Fr
种属反应性	与反应: Human 预测可用于: Mouse, Rat, Rabbit, Guinea pig, Dog, Pig 
免疫原	Full length native protein (purified) corresponding to Dog NCX1. Purified from canine cardiac sodium/calcium exchanger.
表位	This antibody recognizes an epitope between amino acids 371-525 on the intracellular side of the plasma membrane.
阳性对照	IHC-P: Normal human kidney tissue. IHC-Fr: Normal human kidney tissue
常规说明	<p>This antibody clone is manufactured by Abcam. If you require a custom buffer formulation or conjugation for your experiments, please contact orders@abcam.com.</p> <p>The Life Science industry has been in the grips of a reproducibility crisis for a number of years. Abcam is leading the way in addressing this with our range of recombinant monoclonal antibodies and knockout edited cell lines for gold-standard validation. Please check that this product meets your needs before purchasing.</p> <p>If you have any questions, special requirements or concerns, please send us an inquiry and/or contact our Support team ahead of purchase. Recommended alternatives for this product can be found below, along with publications, customer reviews and Q&As</p>

性能

形式	Liquid
存放说明	Shipped at 4°C. Store at +4°C short term (1-2 weeks). Upon delivery aliquot. Store at -20°C long term. Avoid freeze / thaw cycle.
存储溶液	Preservative: 0.02% Sodium azide Constituents: PBS, 6.97% L-Arginine
Primary antibody说明	The sodium/calcium exchanger of cardiac sarcolemma rapidly transports calcium during excitation-contraction coupling and is the dominant myocardial calcium efflux mechanism. The

sodium/calcium exchanger uses the transmembrane sodium gradient to catalyze countertransport of calcium against its electrochemical gradient in a 3 sodium : 1 calcium exchange.
Sodium/calcium exchange activity is present in excitable cells and in non-excitable cells.

克隆 单克隆
克隆编号 C2C12
同种型 IgM

应用

The Abpromise guarantee Abpromise™ 承诺保证使用ab2869于以下的经测试应用

“应用说明”部分 下显示的仅为推荐的起始稀释度;实际最佳的稀释度/浓度应由使用者检定。

应用	Ab评论	说明
Flow Cyt (Intra)		1/20 - 1/100. ab91545 - Mouse monoclonal IgM, is suitable for use as an isotype control with this antibody.
IHC-P	★★★★★ (2)	Use a concentration of 5 µg/ml. Perform heat mediated antigen retrieval with citrate buffer pH 6 before commencing with IHC staining protocol.
IHC-Fr	★★★★★ (1)	Use a concentration of 1 µg/ml. PubMed: 21408028

靶标

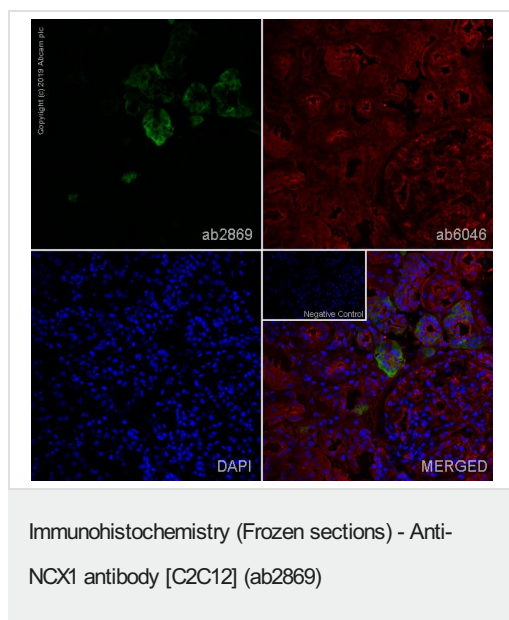
功能 Rapidly transports Ca(2+) during excitation-contraction coupling. Ca(2+) is extruded from the cell during relaxation so as to prevent overloading of intracellular stores.

组织特异性 Expressed in cardiac sarcolemma, brain, kidney, liver, pancreas, skeletal muscle, placenta and lung.

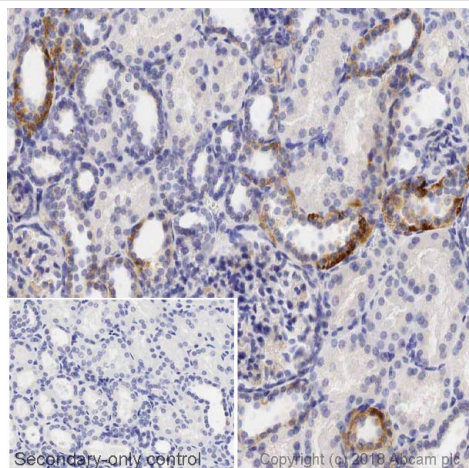
序列相似性 Belongs to the sodium/potassium/calcium exchanger family. SLC8 subfamily. Contains 2 Calx-beta domains.

细胞定位 Cell membrane.

图片



IHC image of NCX1 staining in a section of frozen normal human kidney*. The section was fixed using 10% formaldehyde in 1XPBS for 10 minutes. No antigen retrieval step was performed prior to staining. Non-specific protein-protein interactions were then blocked in TBS containing 0.025% (v/v) Triton X-100, 0.3M glycine and 1% (w/v) BSA for 1h at room temperature. The section was then incubated overnight at +4°C in TBS containing 0.025% (v/v) Triton X-100 and 1% (w/v) BSA with ab2869 at 1µg/ml and **ab6046** (Rabbit polyclonal to beta Tubulin - Loading Control) at 1/1000. The section was then incubated with **ab150117** (Goat Anti-Mouse IgG H&L (Alexa Fluor® 488), 1/1000)) (shown in green) and **ab150080** Goat polyclonal Secondary Antibody to Rabbit IgG - H&L (Alexa Fluor® 594), 1/1000) (shown in red) for 1 hour at room temperature. DAPI was used to stain the cell nuclei (blue) at a concentration of 1.43µM. The secondary-only control insert image is taken from an identical assay without primary antibody. The section was then mounted using Fluoromount®. Image was taken with a confocal microscope (Leica-Microsystems, TCS SP8). For IHC staining systems (automated and non-automated), customers should optimize variable parameters such as antibody concentrations and incubation times. *Tissue obtained from the Human Research Tissue Bank, supported by the NIHR Cambridge Biomedical Research Centre.

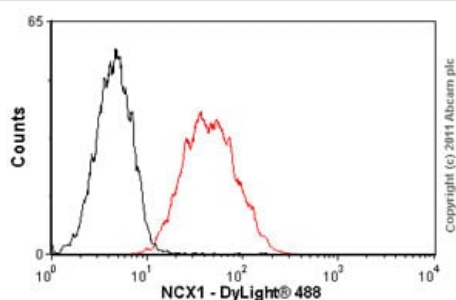


Immunohistochemistry (Formalin/PFA-fixed paraffin-embedded sections) - Anti-NCX1 antibody [C2C12] (ab2869)

IHC image of NCX1 staining in a section of formalin-fixed paraffin-embedded normal human kidney* performed on a Leica BOND™ system using the standard protocol F. The section was pre-treated using heat mediated antigen retrieval with sodium citrate buffer (pH6, epitope retrieval solution 1) for 20mins. The section was then incubated with ab2869, 5ug/ml, for 15 mins at room temperature and detected using an HRP conjugated compact polymer system. DAB was used as the chromogen. The section was then counterstained with haematoxylin and mounted with DPX. The inset secondary-only control image is taken from an identical assay without primary antibody.

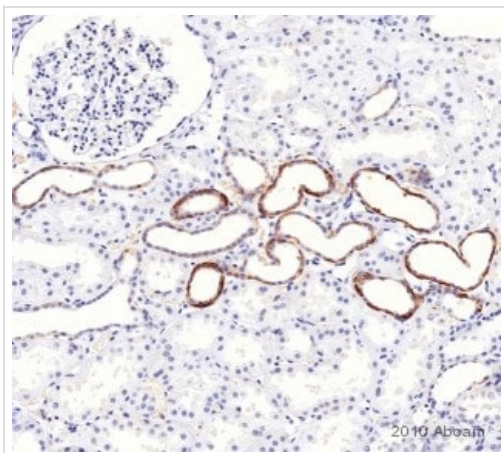
For other IHC staining systems (automated and non-automated) customers should optimize variable parameters such as antigen retrieval conditions, primary antibody concentration and antibody incubation times.

**Tissue obtained from the Human Research Tissue Bank, supported by the NIHR Cambridge Biomedical Research Centre*



Flow Cytometry (Intracellular) - Anti-NCX1 antibody [C2C12] (ab2869)

Overlay histogram showing HEK293 cells stained with ab2869 (red line). The cells were fixed with 80% methanol (5 min) and then permeabilized with 0.1% PBS-Tween for 20 min. The cells were then incubated in 1x PBS / 10% normal goat serum / 0.3M glycine to block non-specific protein-protein interactions followed by the antibody (ab2869, 1/100 dilution) for 30 min at 22°C. The secondary antibody used was DyLight® 488 goat anti-mouse IgM (mu chain) (**ab97007**) at 1/500 dilution for 30 min at 22°C. Isotype control antibody (black line) was mouse IgM [C1G1] (**ab91545**, 2µg/1x10⁶ cells) used under the same conditions. Acquisition of >5,000 events was performed. This antibody gave a positive signal in HEK293 cells fixed with 4% paraformaldehyde (10 min)/permeabilized in 0.1% PBS-Tween used under the same conditions.



Immunohistochemistry (Formalin/PFA-fixed paraffin-embedded sections) - Anti-NCX1 antibody [C2C12] (ab2869)

This image is courtesy of an anonymous Abreview

ab2869 staining NCX1 in Human kidney tissue sections by Immunohistochemistry (IHC-P - formaldehyde-fixed, paraffin-embedded sections). Tissue was fixed with formaldehyde, permeabilized with 0.05% Tween20 and blocked with 5% normal goat serum in 1XPBS + 0.05% Tween20 for 1 hour at 25°C; antigen retrieval was by heat mediation in sodium citrate (pH 6.0) buffer. Samples were incubated with primary antibody (1/100 in blocking buffer) for 1 hour at 25°C. Ab47827 (1/500) was used as the secondary antibody.

Please note: All products are "FOR RESEARCH USE ONLY. NOT FOR USE IN DIAGNOSTIC PROCEDURES"

Our Abpromise to you: Quality guaranteed and expert technical support

- Replacement or refund for products not performing as stated on the datasheet
- Valid for 12 months from date of delivery
- Response to your inquiry within 24 hours
- We provide support in Chinese, English, French, German, Japanese and Spanish
- Extensive multi-media technical resources to help you
- We investigate all quality concerns to ensure our products perform to the highest standards

If the product does not perform as described on this datasheet, we will offer a refund or replacement. For full details of the Abpromise, please visit <https://www.abcam.cn/abpromise> or contact our technical team.

Terms and conditions

- Guarantee only valid for products bought direct from Abcam or one of our authorized distributors