

Anti-Natriuretic peptides A antibody [EPR22089-283] - BSA and Azide free ab237632

重组 RabMAb

7 图像

概述

产品名称	Anti-Natriuretic多肽A抗体[EPR22089-283] - BSA and Azide free
描述	兔单克隆抗体[EPR22089-283] to Natriuretic多肽A - BSA and Azide free
宿主	Rabbit
经测试应用	适用于: WB, IHC-P, IHC-Fr, IP
种属反应性	与反应: Mouse, Rat
免疫原	Synthetic peptide. This information is proprietary to Abcam and/or its suppliers.
阳性对照	IHC-P: Mouse heart tissue.
常规说明	ab237632 is the carrier-free version of ab225844 .

Our **carrier-free** antibodies are typically supplied in a PBS-only formulation, purified and free of BSA, sodium azide and glycerol. The carrier-free buffer and high concentration allow for increased conjugation efficiency.

This conjugation-ready format is designed for use with fluorochromes, metal isotopes, oligonucleotides, and enzymes, which makes them ideal for antibody labelling, functional and cell-based assays, flow-based assays (e.g. mass cytometry) and Multiplex Imaging applications.

Use our **conjugation kits** for antibody conjugates that are ready-to-use in as little as 20 minutes with <1 minute hands-on-time and 100% antibody recovery: available for fluorescent dyes, HRP, biotin and gold.

This product is compatible with the Maxpar[®] Antibody Labeling Kit from Fluidigm, without the need for antibody preparation. Maxpar[®] is a trademark of Fluidigm Canada Inc.

This product is a recombinant monoclonal antibody, which offers several advantages including:

- High batch-to-batch consistency and reproducibility
- Improved sensitivity and specificity
- Long-term security of supply
- Animal-free production

For more information [see here](#).

Our RabMAb[®] technology is a patented hybridoma-based technology for making rabbit monoclonal antibodies. For details on our patents, please refer to [RabMAb[®] patents](#).

性能

形式	Liquid
存放说明	Shipped at 4°C. Store at +4°C. Do Not Freeze.
存储溶液	pH: 7.2 Constituent: PBS
无载体	是
纯度	Protein A purified
克隆	单克隆
克隆编号	EPR22089-283
同种型	IgG

应用

The Abpromise guarantee **Abpromise™**承诺保证使用ab237632于以下的经测试应用

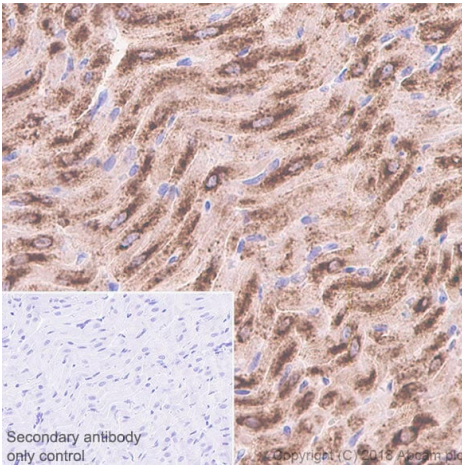
“应用说明”部分 下显示的仅为推荐的起始稀释度;实际最佳的稀释度/浓度应由使用者检定。

应用	Ab评论	说明
WB		1/1000. Detects a band of approximately 17 kDa (predicted molecular weight: 16 kDa).
IHC-P		Use at an assay dependent concentration. Perform heat mediated antigen retrieval with Tris/EDTA buffer pH 9.0 before commencing with IHC staining protocol.
IHC-Fr		Use at an assay dependent concentration.
IP		Use at an assay dependent concentration.

靶标

功能	Hormone playing a key role in cardiovascular homeostasis through regulation of natriuresis, diuresis, and vasodilation. Also plays a role in female pregnancy by promoting trophoblast invasion and spiral artery remodeling in uterus. Specifically binds and stimulates the cGMP production of the NPR1 receptor. Binds the clearance receptor NPR3.
疾病相关	Atrial standstill 2 Atrial fibrillation, familial, 6
序列相似性	Belongs to the natriuretic peptide family.
翻译后修饰	Cleaved by CORIN upon secretion to produce the functional hormone. Atrial natriuretic factor: Cleaved by MME. The cleavage initiates degradation of the factor and thereby regulate its activity.
细胞定位	Secreted.

图片



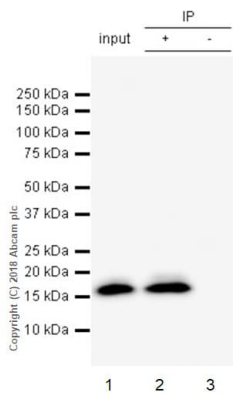
Immunohistochemistry (Formalin/PFA-fixed paraffin-embedded sections) - Anti-Natriuretic peptides A antibody [EPR22089-283] - BSA and Azide free (ab237632)

Immunohistochemical analysis of paraffin-embedded rat heart atrium tissue labeling Natriuretic peptides A with **ab225844** at 1/2000 dilution, followed by Goat Anti-Rabbit IgG H&L (HRP) Ready to use. Cytoplasmic staining in cardiac muscle of rat atrium (PMID: 2942710; PMID:25532015; PMID: 1824903). Counterstained with Hematoxylin.

Secondary antibody only control: Used PBS instead of primary antibody, secondary antibody is Goat Anti-Rabbit IgG H&L (HRP) Ready to use.

This data was developed using the same antibody clone in a different buffer formulation containing PBS, BSA, glycerol, and sodium azide (**ab225844**).

Heat mediated antigen retrieval was performed with Tris/EDTA buffer pH 9.0 before commencing with IHC staining protocol.



Immunoprecipitation - Anti-Natriuretic peptides A antibody [EPR22089-283] - BSA and Azide free (ab237632)

Natriuretic peptides A was immunoprecipitated from 0.35 mg Mouse heart tissue lysate with **ab225844** at 1/1000 dilution.

Western blot was performed from the immunoprecipitate using **ab225844** at 1/500 dilution. VeriBlot for IP Detection Reagent (HRP) (**ab131366**) was used for detection at 1/1000 dilution.

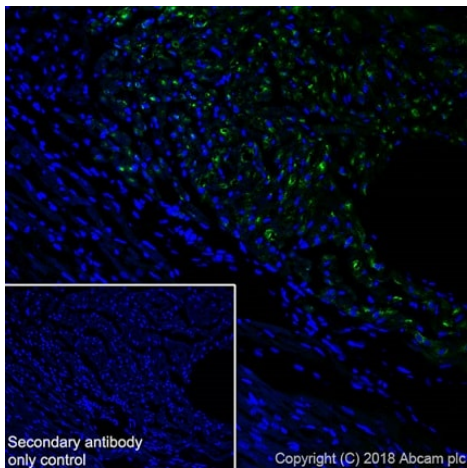
Lane 1: Mouse heart lysate 10 µg (Input).

Lane 2: **ab225844** IP in Mouse heart tissue lysate (+).

Lane 3: Rabbit monoclonal IgG (**ab172730**) instead of **ab225844** in Mouse heart lysate (-).

Blocking and dilution buffer and concentration: 5% NFDm/TBST
Exposure time: 10 seconds

This data was developed using the same antibody clone in a different buffer formulation containing PBS, BSA, glycerol, and sodium azide (**ab225844**).



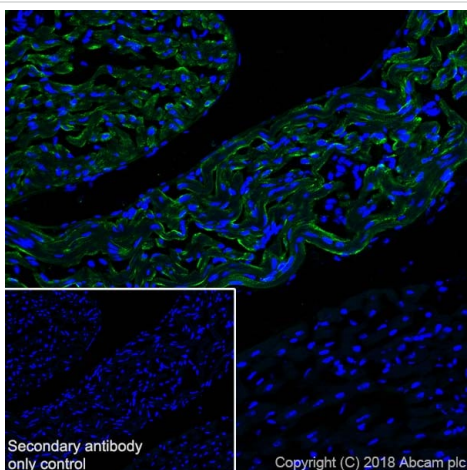
Immunohistochemistry (Frozen sections) - Anti-Natriuretic peptides A antibody [EPR22089-283] - BSA and Azide free (ab237632)

Immunohistochemical analysis of 4% paraformaldehyde-fixed, 0.2% Triton X-100 permeabilized frozen rat heart tissue labeling Natriuretic peptides A with **ab225844** at 1/100 dilution, followed by Goat Anti-Rabbit IgG H&L (Alexa Fluor® 488) (**ab150077**) secondary antibody at 1/1000 dilution (green). Cytoplasmic staining in cardiac muscle of rat atrium is observed.

The nuclear counter stain is DAPI (blue).

Secondary antibody only control: Used PBS instead of primary antibody, secondary antibody is Goat Anti-Rabbit IgG H&L (Alexa Fluor® 488) (**ab150077**) secondary antibody at 1/1000 dilution.

This data was developed using the same antibody clone in a different buffer formulation containing PBS, BSA, glycerol, and sodium azide (**ab225844**).



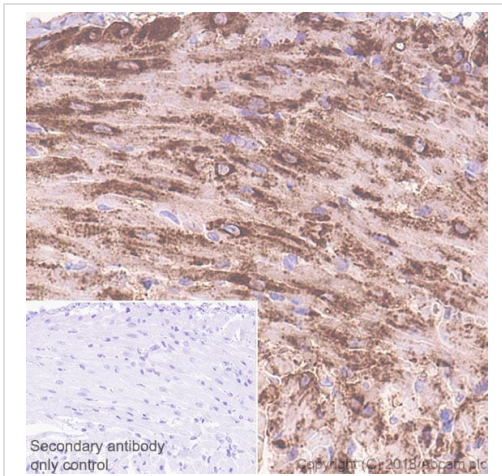
Immunohistochemistry (Frozen sections) - Anti-Natriuretic peptides A antibody [EPR22089-283] - BSA and Azide free (ab237632)

Immunohistochemical analysis of 4% paraformaldehyde-fixed, 0.2% Triton X-100 permeabilized frozen mouse heart tissue labeling Natriuretic peptides A with **ab225844** at 1/100 dilution, followed by Goat Anti-Rabbit IgG H&L (Alexa Fluor® 488) (**ab150077**) secondary antibody at 1/1000 dilution (green). Cytoplasmic staining in cardiac muscle of mouse atrium is observed.

The nuclear counter stain is DAPI (blue).

Secondary antibody only control: Used PBS instead of primary antibody, secondary antibody is Goat Anti-Rabbit IgG H&L (Alexa Fluor® 488) (**ab150077**) secondary antibody at 1/1000 dilution.

This data was developed using the same antibody clone in a different buffer formulation containing PBS, BSA, glycerol, and sodium azide (**ab225844**).



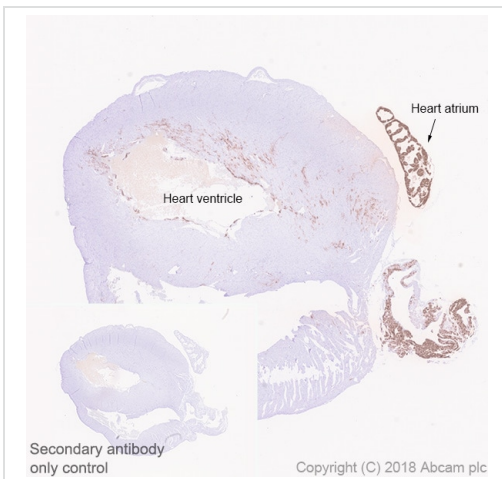
Immunohistochemistry (Formalin/PFA-fixed paraffin-embedded sections) - Anti-Natriuretic peptides A antibody [EPR22089-283] - BSA and Azide free (ab237632)

Immunohistochemical analysis of paraffin-embedded mouse heart atrium tissue labeling Natriuretic peptides A with **ab225844** at 1/2000 dilution, followed by Goat Anti-Rabbit IgG H&L (HRP) Ready to use. Cytoplasmic staining in cardiac muscle of mouse atrium (PMID: 2942710; PMID:25532015; PMID: 1824903). Counterstained with Hematoxylin.

Secondary antibody only control: Used PBS instead of primary antibody, secondary antibody is Goat Anti-Rabbit IgG H&L (HRP) Ready to use.

This data was developed using the same antibody clone in a different buffer formulation containing PBS, BSA, glycerol, and sodium azide (**ab225844**).

Heat mediated antigen retrieval was performed with Tris/EDTA buffer pH 9.0 before commencing with IHC staining protocol.



Immunohistochemistry (Formalin/PFA-fixed paraffin-embedded sections) - Anti-Natriuretic peptides A antibody [EPR22089-283] - BSA and Azide free (ab237632)

Immunohistochemical analysis of paraffin-embedded mouse heart tissue labeling Natriuretic peptides A with **ab225844** at 1/2000 dilution, followed by Goat Anti-Rabbit IgG H&L (HRP) Ready to use. Strong cytoplasmic staining mainly in the atria and at lower levels in ventricle of mouse heart (PMID: 2942710; PMID:25532015; PMID: 1824903). Counterstained with Hematoxylin.

Secondary antibody only control: Used PBS instead of primary antibody, secondary antibody is Goat Anti-Rabbit IgG H&L (HRP) Ready to use.

This data was developed using the same antibody clone in a different buffer formulation containing PBS, BSA, glycerol, and sodium azide (**ab225844**).

Heat mediated antigen retrieval was performed with Tris/EDTA buffer pH 9.0 before commencing with IHC staining protocol.

Why choose a recombinant antibody?



Research with confidence
Consistent and reproducible results



Long-term and scalable supply
Recombinant technology



Success from the first experiment
Confirmed specificity



Ethical standards compliant
Animal-free production

Anti-Natriuretic peptides A antibody [EPR22089-283]

- BSA and Azide free (ab237632)

Please note: All products are "FOR RESEARCH USE ONLY. NOT FOR USE IN DIAGNOSTIC PROCEDURES"

Our Abpromise to you: Quality guaranteed and expert technical support

- Replacement or refund for products not performing as stated on the datasheet
- Valid for 12 months from date of delivery
- Response to your inquiry within 24 hours
- We provide support in Chinese, English, French, German, Japanese and Spanish
- Extensive multi-media technical resources to help you
- We investigate all quality concerns to ensure our products perform to the highest standards

If the product does not perform as described on this datasheet, we will offer a refund or replacement. For full details of the Abpromise, please visit <https://www.abcam.cn/abpromise> or contact our technical team.

Terms and conditions

- Guarantee only valid for products bought direct from Abcam or one of our authorized distributors