

Anti-N epsilon gamma glutamyl Lysine antibody [81D4] ab424

★★★★★ [2 Abreviews](#) [17 References](#) [2 图像](#)

概述

产品名称	Anti-N epsilon gamma glutamyl Lysine抗体[81D4]
描述	小鼠单克隆抗体[81D4] to N epsilon gamma glutamyl Lysine
宿主	Mouse
经测试应用	适用于: IHC-P, ELISA, IHC-Fr
种属反应性	与反应: Species independent
免疫原	Synthetic isopeptide.
常规说明	<p>The ability of this antibody to fix complement is unknown. The isopeptide may be purchased from Bachem Catalog number G-1970.</p> <p>The Life Science industry has been in the grips of a reproducibility crisis for a number of years. Abcam is leading the way in addressing this with our range of recombinant monoclonal antibodies and knockout edited cell lines for gold-standard validation. Please check that this product meets your needs before purchasing.</p> <p>If you have any questions, special requirements or concerns, please send us an inquiry and/or contact our Support team ahead of purchase. Recommended alternatives for this product can be found below, along with publications, customer reviews and Q&As</p>

性能

形式	Liquid
存放说明	Shipped at 4°C. Store at +4°C short term (1-2 weeks). Upon delivery aliquot. Store at -20°C or -80°C. Avoid freeze / thaw cycle.
存储溶液	Constituents: 2% Sucrose, 5.8% Sodium chloride, Phosphate Buffer
纯度	Protein A purified
克隆	单克隆
克隆编号	81D4
骨髓瘤	unknown
同种型	IgM
轻链类型	kappa

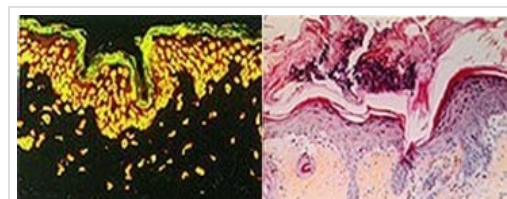
The Abpromise guarantee

Abpromise™承诺保证使用ab424于以下的经测试应用

“应用说明”部分 下显示的仅为推荐的起始稀释度;实际最佳的稀释度/浓度应由使用者检定。

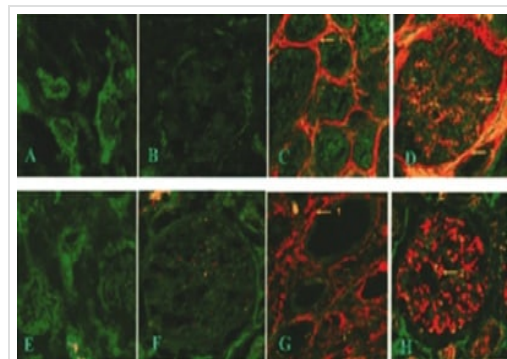
应用	Ab评论	说明
IHC-P		1/50 - 1/800.
ELISA		Use at an assay dependent concentration.
IHC-Fr	★★★★★ (1)	1/50 - 1/800.

图片



Immunohistochemistry (Formalin/PFA-fixed paraffin-embedded sections) - Anti-N epsilon gamma glutamyl Lysine antibody [81D4] (ab424)

ab424 staining N epsilon gamma glutamyl Lysine in skin tissue sections.



Immunohistochemistry (Frozen sections) - Anti-N epsilon gamma glutamyl Lysine antibody [81D4] (ab424)

ab424 staining N epsilon gamma glutamyl Lysine in kidney tissue sections by Immunohistochemistry (Frozen sections). Sections A through D were stained for insoluble tissue transglutaminase, while E through H were stained for N epsilon gamma glutamyl Lysine crosslink. A, B, E, F were control kidneys; C, D, G, H were diseased kidneys showing increased staining in the expanded interstitium, the mesangium and periglomerular.

Please note: All products are "FOR RESEARCH USE ONLY. NOT FOR USE IN DIAGNOSTIC PROCEDURES"

Our Abpromise to you: Quality guaranteed and expert technical support

- Replacement or refund for products not performing as stated on the datasheet
- Valid for 12 months from date of delivery
- Response to your inquiry within 24 hours

- We provide support in Chinese, English, French, German, Japanese and Spanish
- Extensive multi-media technical resources to help you
- We investigate all quality concerns to ensure our products perform to the highest standards

If the product does not perform as described on this datasheet, we will offer a refund or replacement. For full details of the Abpromise, please visit <https://www.abcam.cn/abpromise> or contact our technical team.

Terms and conditions

- Guarantee only valid for products bought direct from Abcam or one of our authorized distributors