


# Anti-Myoglobin antibody ab78441

### 3 图像

#### 概述

<b>产品名称</b>	Anti-Myoglobin抗体
<b>描述</b>	兔多克隆抗体to Myoglobin
<b>宿主</b>	Rabbit
<b>经测试应用</b>	<b>适用于:</b> WB, Sandwich ELISA
<b>种属反应性</b>	<b>与反应:</b> Human <b>预测可用于:</b> Chimpanzee, Gorilla, Orangutan 
<b>免疫原</b>	Synthetic peptide corresponding to Human Myoglobin aa 100 to the C-terminus (C terminal) conjugated to keyhole limpet haemocyanin. (Peptide available as <a href="#">ab88944</a> )
<b>阳性对照</b>	This antibody gave a positive signal in the following tissue lysates: Human Skeletal Muscle; Human Heart.
<b>常规说明</b>	<p>The Life Science industry has been in the grips of a reproducibility crisis for a number of years. Abcam is leading the way in addressing this with our range of recombinant monoclonal antibodies and knockout edited cell lines for gold-standard validation. Please check that this product meets your needs before purchasing.</p> <p>If you have any questions, special requirements or concerns, please send us an inquiry and/or contact our Support team ahead of purchase. Recommended alternatives for this product can be found below, along with publications, customer reviews and Q&amp;As</p>

#### 性能

<b>形式</b>	Liquid
<b>存放说明</b>	Shipped at 4°C. Store at +4°C short term (1-2 weeks). Upon delivery aliquot. Store at -20°C or -80°C. Avoid freeze / thaw cycle.
<b>存储溶液</b>	pH: 7.40 Preservative: 0.02% Sodium azide Constituent: PBS

Batches of this product that have a concentration < 1mg/ml may have BSA added as a stabilising agent. If you would like information about the formulation of a specific lot, please contact our scientific support team who will be happy to help.

纯度	Immunogen affinity purified
克隆	多克隆
同种型	IgG

## 应用

**The Abpromise guarantee** **Abpromise™**承诺保证使用ab78441于以下的经测试应用

“应用说明”部分下显示的仅为推荐的起始稀释度;实际最佳的稀释度/浓度应由使用者检定。

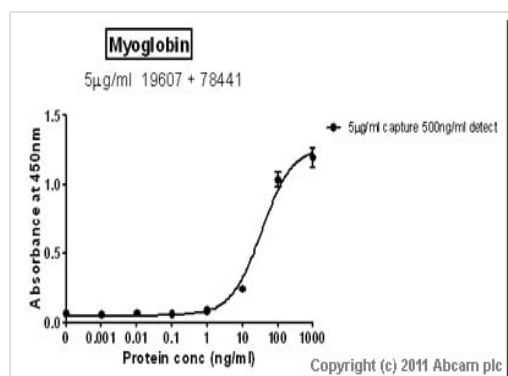
应用	Ab评论	说明
WB		Use a concentration of 0.5 µg/ml. Detects a band of approximately 17 kDa (predicted molecular weight: 17 kDa).
Sandwich ELISA		Use a concentration of 0.5 µg/ml. For sandwich ELISA, use this antibody as Detection at 0.5 µg/ml with Mouse monoclonal [BDI927] to Myoglobin ( <a href="#">ab19607</a> ) as Capture.

## 靶标

**功能** Serves as a reserve supply of oxygen and facilitates the movement of oxygen within muscles.

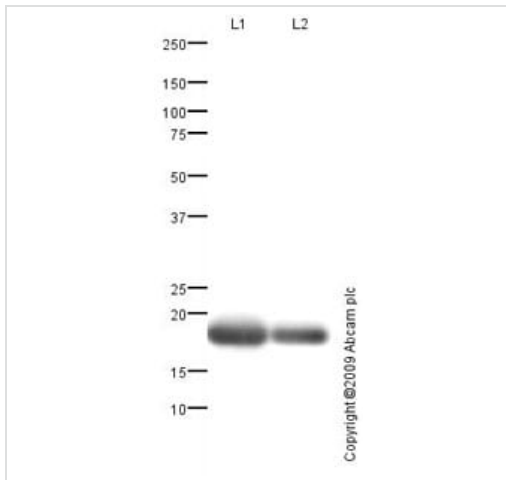
**序列相似性** Belongs to the globin family.

## 图片



Standard Curve for Myoglobin (Analyte: Myoglobin protein ([ab96036](#))); dilution range 1pg/ml to 1µg/ml using Capture Antibody Mouse monoclonal [BDI927] to Myoglobin ([ab19607](#)) at 5µg/ml and Detector Antibody Rabbit polyclonal to Myoglobin ([ab78441](#)) at 0.5µg/ml.

Sandwich ELISA - Anti-Myoglobin antibody  
([ab78441](#))



Western blot - Anti-Myoglobin antibody (ab78441)

**All lanes :** Anti-Myoglobin antibody (ab78441) at 0.5 µg/ml

**Lane 1 :** Human skeletal muscle tissue lysate - total protein (**ab29330**)

**Lane 2 :** Human heart tissue lysate - total protein (**ab29431**)

Lysates/proteins at 5 µg per lane.

**Secondary**

**All lanes :** Goat polyclonal to Rabbit IgG - H&L - Pre-Adsorbed (HRP) at 1/3000 dilution

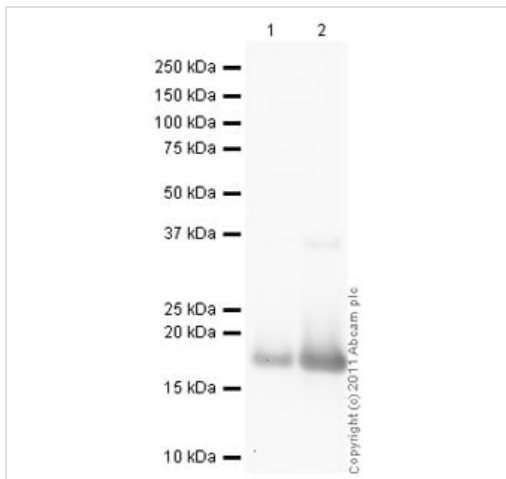
Developed using the ECL technique.

Performed under reducing conditions.

**Predicted band size:** 17 kDa

**Observed band size:** 17 kDa

**Exposure time:** 10 seconds



Western blot - Anti-Myoglobin antibody (ab78441)

**All lanes :** Anti-Myoglobin antibody (ab78441) at 0.5 µg/ml

**Lane 1 :** Native Human Myoglobin protein (**ab77876**) at 0.1 µg

**Lane 2 :** Native Human Myoglobin protein (**ab77876**) at 0.01 µg

**Secondary**

**All lanes :** Goat Anti-Rabbit IgG H&L (HRP) preadsorbed (**ab97080**) at 1/5000 dilution

Developed using the ECL technique.

Performed under reducing conditions.

**Predicted band size:** 17 kDa

**Exposure time:** 2 minutes

**Please note:** All products are "FOR RESEARCH USE ONLY. NOT FOR USE IN DIAGNOSTIC PROCEDURES"

### **Our Abpromise to you: Quality guaranteed and expert technical support**

---

- Replacement or refund for products not performing as stated on the datasheet
- Valid for 12 months from date of delivery
- Response to your inquiry within 24 hours
- We provide support in Chinese, English, French, German, Japanese and Spanish
- Extensive multi-media technical resources to help you
- We investigate all quality concerns to ensure our products perform to the highest standards

If the product does not perform as described on this datasheet, we will offer a refund or replacement. For full details of the Abpromise, please visit <https://www.abcam.cn/abpromise> or contact our technical team.

### **Terms and conditions**

---

- Guarantee only valid for products bought direct from Abcam or one of our authorized distributors