

### Anti-MyoD1 antibody [EPR6653-131] ab133627

**重组** RabMAb

★★★★★ **11 Abreviews** **17 References** **10 图像**

#### 概述

产品名称	Anti-MyoD1抗体[EPR6653-131]
描述	兔单克隆抗体[EPR6653-131] to MyoD1
宿主	Rabbit
经测试应用	<b>适用于:</b> ChIC/CUT&RUN-seq, WB, ICC/IF, IHC-P
种属反应性	<b>与反应:</b> Human
免疫原	Synthetic peptide corresponding to Human MyoD1 aa 50-150. Database link: <b>P15172</b>
阳性对照	IHC-P: Human Rhabdomyosarcoma tissue WB: Human Rhabdomyosarcoma Cell Line Rh30, RD (Human muscle rhabdomyosarcoma) whole cell lysate ICC/IF: RD (Human muscle rhabdomyosarcoma) cell line. ChIC/CUT&RUN-Seq: RD (Human muscle rhabdomyosarcoma) cells.
常规说明	<p>This product is a recombinant monoclonal antibody, which offers several advantages including:</p> <ul style="list-style-type: none"> <li>- High batch-to-batch consistency and reproducibility</li> <li>- Improved sensitivity and specificity</li> <li>- Long-term security of supply</li> <li>- Animal-free production</li> </ul> <p>For more information <b><a href="#">see here</a></b>.</p> <p>Our RabMAb<sup>®</sup> technology is a patented hybridoma-based technology for making rabbit monoclonal antibodies. For details on our patents, please refer to <b><a href="#">RabMAb<sup>®</sup> patents</a></b>.</p> <p>Mouse, Rat: We have preliminary internal testing data to indicate this antibody may not react with these species. Please contact us for more information.</p>

#### 性能

形式	Liquid
存放说明	Shipped at 4°C. Store at -20°C. Stable for 12 months at -20°C.
存储溶液	pH: 7.20 Preservative: 0.01% Sodium azide Constituents: 59% PBS, 40% Glycerol (glycerin, glycerine), 0.05% BSA
纯度	Protein A purified

克隆	单克隆
克隆编号	EPR6653-131
同种型	IgG

应用

**The Abpromise guarantee**      **Abpromise™**承诺保证使用ab133627于以下的经测试应用

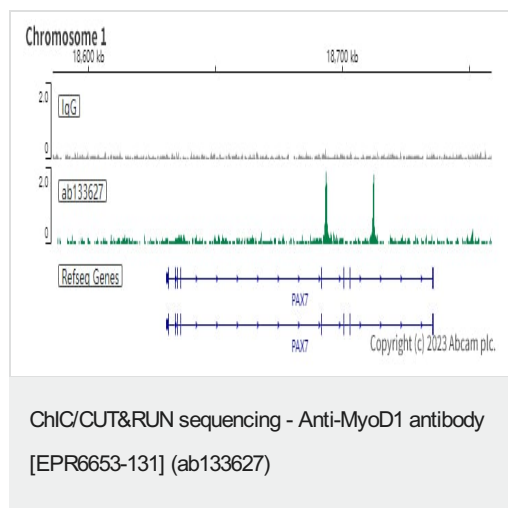
“应用说明”部分 下显示的仅为推荐的起始稀释度;实际最佳的稀释度/浓度应由使用者检定。

应用	Ab评论	说明
ChIC/CUT&RUN-seq		Use at an assay dependent concentration. 5µg
WB		1/1000. Detects a band of approximately 45 kDa (predicted molecular weight: 34 kDa). Abcam recommends using milk as the blocking agent.
ICC/IF	★★★★★ (1)	1/100.
IHC-P	★★★★☆ (5)	1/250 - 1/500. Perform heat mediated antigen retrieval with citrate buffer pH 6 before commencing with IHC staining protocol.

靶标

功能	Involved in muscle differentiation (myogenic factor). Induces fibroblasts to differentiate into myoblasts. Activates muscle-specific promoters. Interacts with and is inhibited by the twist protein. This interaction probably involves the basic domains of both proteins.
序列相似性	Contains 1 basic helix-loop-helix (bHLH) domain.
翻译后修饰	Acetylated by a complex containing EP300 and PCAF. The acetylation is essential to activate target genes. Conversely, its deacetylation by SIRT1 inhibits its function. Ubiquitinated on the N-terminus; which is required for proteasomal degradation.
细胞定位	Nucleus.

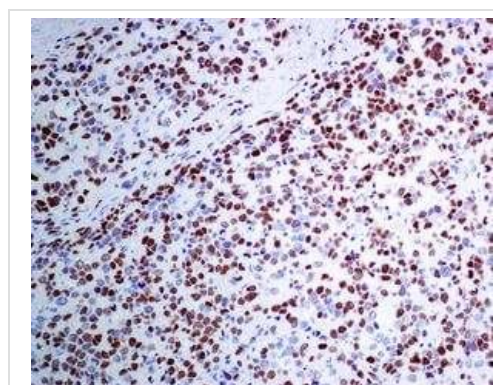
图片



ChIP/CUT&RUN was performed using a pAG-MNase at a final concentration of 700 ng/mL,  $2.5 \times 10^5$  RD (Human muscle rhabdomyosarcoma) cells and 5µg of ab133627 [EPR6653-131]. The resulting DNA was sequenced on the Illumina NovaSeq 6000 to a depth of 10 million reads. The negative IgG control **ab172730** is also shown.

Additional screenshots of mapped reads can be downloaded [here](#).

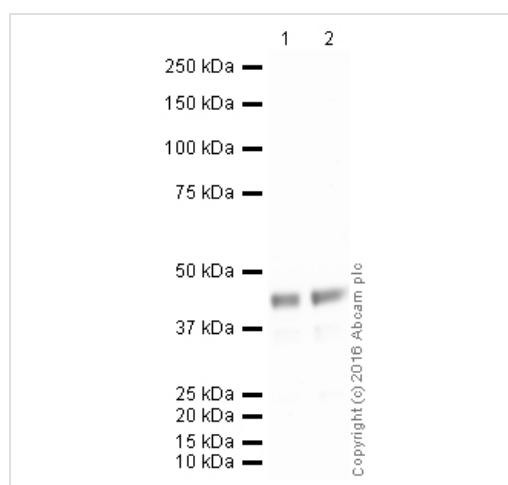
The University of Geneva owns patents relevant to ChIP (Chromatin Immuno-Cleavage) methods.



Immunohistochemical analysis of MyoD1 in paraffin embedded Human rhabdomyosarcoma tissue, using ab133627 at a dilution of 1/250.

Perform heat mediated antigen retrieval with citrate buffer pH 6 before commencing with IHC staining protocol.

Immunohistochemistry (Formalin/PFA-fixed paraffin-embedded sections) - Anti-MyoD1 antibody [EPR6653-131] (ab133627)



**All lanes** : Anti-MyoD1 antibody [EPR6653-131] (ab133627) at 1/1000 dilution

**Lane 1** : Rh30 (Human Rhabdomyosarcoma) Whole Cell Lysate at 5 µg

**Lane 2** : Rh30 (Human Rhabdomyosarcoma) Whole Cell Lysate at 10 µg

### Secondary

**All lanes** : Goat polyclonal to Rabbit IgG - H&L - Pre-Adsorbed (HRP) at 1/50000 dilution

Developed using the ECL technique.

Performed under reducing conditions.

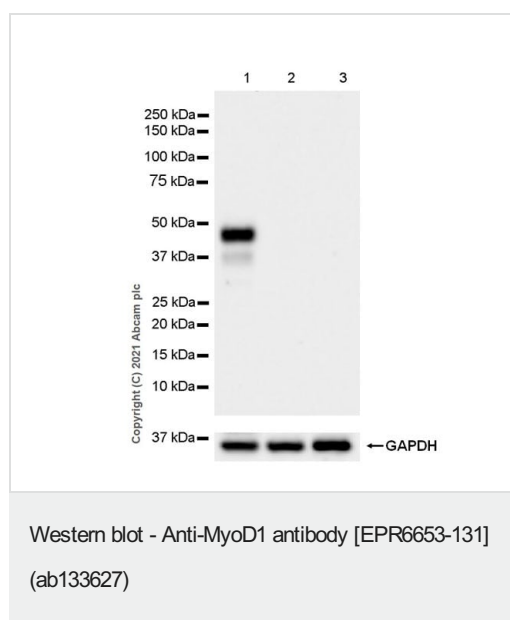
**Predicted band size:** 34 kDa

**Observed band size:** 45 kDa

**Exposure time:** 4 minutes

This blot was produced using a 4-12% Bis-tris gel under the MOPS buffer system. The gel was run at 200V for 50 minutes before being transferred onto a Nitrocellulose membrane at 30V for 70 minutes. The membrane was then blocked for an hour using 3% Milk before being incubated with ab133627 overnight at 4°C. Antibody binding was detected using an anti-rabbit antibody conjugated to HRP, and visualised using ECL development solution [ab133406](#).

ab133627 detects a band at 45 kDa, while this differs to its predicted molecular weight of 34 kDa, the banding pattern observed is consistent with what has been described in the literature PMID:19352326.



**All lanes :** Anti-MyoD1 antibody [EPR6653-131] (ab133627) at 1/1000 dilution

**Lane 1 :** RD (Human muscle rhabdomyosarcoma) whole cell lysate

**Lane 2 :** HEK-293 (human embryonic kidney epithelial cell) whole cell lysate

**Lane 3 :** HeLa (human cervix adenocarcinoma epithelial cell) whole cell lysate

Lysates/proteins at 20 µg per lane.

### Secondary

**All lanes :** Goat Anti-Rabbit IgG H&L (HRP) ([ab97051](#)) at 1/100000 dilution

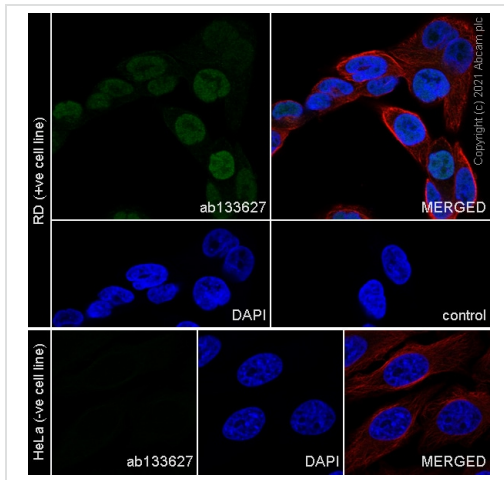
**Predicted band size:** 34 kDa

**Observed band size:** 45 kDa

**Exposure time:** 37 seconds

Blocking and diluting buffer: 5% NFDM/TBST

Negative control: HEK-293, HeLa (PMID: 17028574 )



Immunocytochemistry/ Immunofluorescence - Anti-MyoD1 antibody [EPR6653-131] (ab133627)

Immunocytochemical analysis of 4% paraformaldehyde fixed, 0.1% TritonX-100 permeabilised RD cell line labeling MyoD1 with ab133627 at 1/100 dilution. **ab150077** Goat Anti-Rabbit IgG H&L (Alexa Fluor® 488) was used as a secondary antibody at 1/1000 dilution. Counterstained with **ab195889** Anti-alpha Tubulin mouse monoclonal antibody - Microtubule Marker (Alexa Fluor® 594). Nuclear staining: DAPI.

Confocal image showing nuclear staining in RD cell line

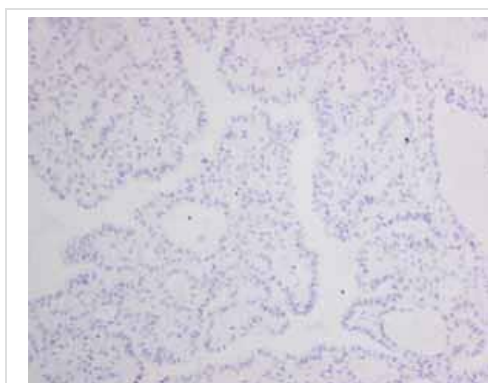
Negative control: HeLa (PMID: 17028574 )



Immunohistochemistry (Formalin/PFA-fixed paraffin-embedded sections) - Anti-MyoD1 antibody [EPR6653-131] (ab133627)

ab133627 showing negative staining in Normal heart tissue.

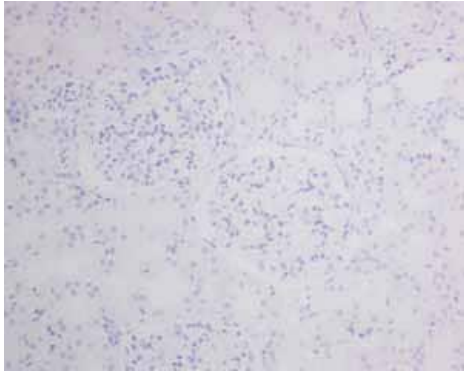
Perform heat mediated antigen retrieval with citrate buffer pH 6 before commencing with IHC staining protocol.



Immunohistochemistry (Formalin/PFA-fixed paraffin-embedded sections) - Anti-MyoD1 antibody [EPR6653-131] (ab133627)

ab133627 showing negative staining in Thyroid gland carcinoma tissue.

Perform heat mediated antigen retrieval with citrate buffer pH 6 before commencing with IHC staining protocol.



Immunohistochemistry (Formalin/PFA-fixed paraffin-embedded sections) - Anti-MyoD1 antibody [EPR6653-131] (ab133627)

ab133627 showing negative staining in Normal kidney tissue.

Perform heat mediated antigen retrieval with citrate buffer pH 6 before commencing with IHC staining protocol.



Immunohistochemistry (Formalin/PFA-fixed paraffin-embedded sections) - Anti-MyoD1 antibody [EPR6653-131] (ab133627)

ab133627 showing negative staining in Skeletal muscle tissue.

Perform heat mediated antigen retrieval with citrate buffer pH 6 before commencing with IHC staining protocol.

### Why choose a recombinant antibody?



**Research with confidence**  
Consistent and reproducible results



**Long-term and scalable supply**  
Recombinant technology



**Success from the first experiment**  
Confirmed specificity



**Ethical standards compliant**  
Animal-free production

Anti-MyoD1 antibody [EPR6653-131] (ab133627)

**Please note:** All products are "FOR RESEARCH USE ONLY. NOT FOR USE IN DIAGNOSTIC PROCEDURES"

## **Our Abpromise to you: Quality guaranteed and expert technical support**

---

- Replacement or refund for products not performing as stated on the datasheet
- Valid for 12 months from date of delivery
- Response to your inquiry within 24 hours
  
- We provide support in Chinese, English, French, German, Japanese and Spanish
- Extensive multi-media technical resources to help you
- We investigate all quality concerns to ensure our products perform to the highest standards

If the product does not perform as described on this datasheet, we will offer a refund or replacement. For full details of the Abpromise, please visit <https://www.abcam.cn/abpromise> or contact our technical team.

## **Terms and conditions**

---

- Guarantee only valid for products bought direct from Abcam or one of our authorized distributors